

ISO

INTERNATIONAL ORGANIZATION FOR STANDARDIZATION

11.12

ISO RECOMMENDATION R 518

CAMERA ACCESSORY SHOES

1st EDITION

November 1966

COPYRIGHT RESERVED

The copyright of ISO Recommendations and ISO Standards belongs to ISO Member Bodies. Reproduction of these documents, in any country, may be authorized therefore only by the national standards organization of that country, being a member of ISO.

For each individual country the only valid standard is the national standard of that country.

Printed in Switzerland

Also issued in French and Russian. Copies to be obtained through the national standards organizations.

BRIEF HISTORY

The ISO Recommendation R 518, *Camera Accessory Shoes*, was drawn up by Technical Committee ISO/TC 42, *Photography*, the Secretariat of which was held by the American Standards Association, Inc. (ASA).

Work on this question by the Technical Committee began in 1955 and led, in 1959, to the adoption of a Draft ISO Recommendation.

In August 1961, this Draft ISO Recommendation (No. 428) was circulated to all the ISO Member Bodies for enquiry. It was approved by the following Member Bodies:

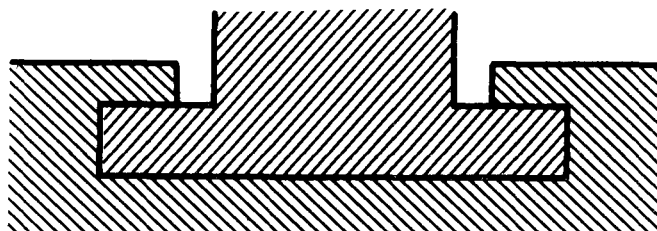
Belgium	Italy	Switzerland
Brazil	Netherlands	United Kingdom
Canada	New Zealand	U.S.A.
Chile	Romania	U.S.S.R.
Germany	Sweden	

No Member Body opposed the approval of the Draft.

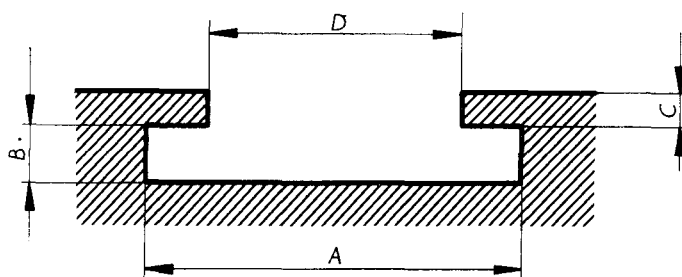
The Draft ISO Recommendation was then submitted by correspondence to the ISO Council, which decided, in November 1966, to accept it as an ISO RECOMMENDATION.

CAMERA ACCESSORY SHOES

Preferred form of lateral guidance



Dimensions and tolerances



Dimensions	millimetres	inches
A	$18.6 \begin{smallmatrix} +0.20 \\ 0 \end{smallmatrix}$ mm	$0.73 \begin{smallmatrix} +0.01 \\ 0 \end{smallmatrix}$ in
B	$2.0 \begin{smallmatrix} +0.15 \\ 0 \end{smallmatrix}$ mm	$0.079 \begin{smallmatrix} +0.006 \\ 0 \end{smallmatrix}$ in
C	1.5 mm maximum	0.06 in maximum
D	12.5 mm minimum	0.49 in minimum

A stop should be provided at the forward end of the shoe, the length of shoe up to the stop being $15 \begin{smallmatrix} +4 \\ 0 \end{smallmatrix}$ mm ($0.6 \begin{smallmatrix} +0.16 \\ 0 \end{smallmatrix}$ in).

A rectangular area extending 12.5 mm (0.49 in) in front and at the back of the shoe, and 25 mm (0.98 in) to the right and left of the center of the shoe, should be devoid of obstruction higher than the top of the shoe.