

© ISO 2023 – All rights reserved

**ISO/DTS 23301:2023(E)**

ISO/TC 184/SC 4/~~WG 16~~

Secretariat: ANSI

Date: 2023-~~05-12~~-19

**STEP geometry visualization services**

**Services de visualisation de la géométrie STEP**

iTeh STANDARD PREVIEW  
(standards.iteh.ai)

ISO/DTS 23301

<https://standards.iteh.ai/catalog/standards/sist/8cb5d608-e3fe-4de1-a878-0c00602918fd/iso-dts-23301>

ISO/DTS 23301:2023(E)

CD

**FDIS** stage

iTeh STANDARD PREVIEW  
(standards.iteh.ai)

ISO/DTS 23301

<https://standards.iteh.ai/catalog/standards/sist/8cb5d608-e3fe-4de1-a878-0c00602918fd/iso-dts-23301>

**Warning for WDs and CDs**

~~This document is not an ISO International Standard. It is distributed for review and comment. It is subject to change without notice and may not be referred to as an International Standard.~~

~~Recipients of this draft are invited to submit, with their comments, notification of any relevant patent rights of which they are aware and to provide supporting documentation.~~

© ISO 2023

All rights reserved. Unless otherwise specified, or required in the context of its implementation, no part of this publication may be reproduced or utilized otherwise in any form or by any means, electronic or mechanical, including photocopying, or posting on the internet or an intranet, without prior written permission. Permission can be requested from either ISO at the address below or ISO's member body in the country of the requester.

ISO copyright office  
CP 401 • Ch. de Blandonnet 8  
CH-1214 Vernier, Geneva  
Phone: + 41 22 749 01 11  
Email: [copyright@iso.org](mailto:copyright@iso.org)  
Website: [www.iso.org](http://www.iso.org)

Published in Switzerland

TeH STANDARD PREVIEW  
(standards.itech.ai)

[ISO/DTS 23301](https://standards.itech.ai/catalog/standards/sist/8cb5d608-e3fe-4de1-a878-0c00602918fd/iso-dts-23301)

<https://standards.itech.ai/catalog/standards/sist/8cb5d608-e3fe-4de1-a878-0c00602918fd/iso-dts-23301>

ISO/DTS 23301:(E)

# iTeh STANDARD PREVIEW (standards.iteh.ai)

ISO/DTS 23301

<https://standards.iteh.ai/catalog/standards/sist/8cb5d608-e3fe-4de1-a878-0c00602918fd/iso-dts-23301>

## Foreword

ISO (the International Organization for Standardization) is a worldwide federation of national standards bodies (ISO member bodies). The work of preparing International Standards is normally carried out through ISO technical committees. Each member body interested in a subject for which a technical committee has been established has the right to be represented on that committee. International organizations, governmental and non-governmental, in liaison with ISO, also take part in the work. ISO collaborates closely with the International Electrotechnical Commission (IEC) on all matters of electrotechnical standardization.

The procedures used to develop this document and those intended for its further maintenance are described in the ISO/IEC Directives, Part 1. In particular, the different approval criteria needed for the different types of ISO documents should be noted. This document was drafted in accordance with the editorial rules of the ISO/IEC Directives, Part 2 (see [www.iso.org/directives](http://www.iso.org/directives)).

ISO draws attention to the possibility that the implementation of this document may involve the use of (a) patent(s). ISO takes no position concerning the evidence, validity or applicability of any claimed patent rights in respect thereof. As of the date of publication of this document, ISO had not received notice of (a) patent(s) which may be required to implement this document. However, implementers are cautioned that this may not represent the latest information, which may be obtained from the patent database available at [www.iso.org/patents](http://www.iso.org/patents). ISO shall not be held responsible for identifying any or all such patent rights.

Any trade name used in this document is information given for the convenience of users and does not constitute an endorsement.

For an explanation of the voluntary nature of standards, the meaning of ISO specific terms and expressions related to conformity assessment, as well as information about ISO's adherence to the World Trade Organization (WTO) principles in the Technical Barriers to Trade (TBT), see [www.iso.org/iso/foreword.html](http://www.iso.org/iso/foreword.html).

This document was prepared jointly by Technical Committee ISO/TC 184, *Automation systems and integration*, Subcommittee SC 4, *Industrial data*, in collaboration with Joint Technical Committee ISO/IEC JTC 1, *Information technology*, Subcommittee SC 24, *Computer graphics, image processing and environmental data representation* and ISO/TC 171, *Document management applications*, Subcommittee SC 2, *Document file formats, EDMS systems and authenticity of information*.

This second edition cancels and replaces the first edition (ISO/TS 23301:2021), which has been technically revised.

The main changes ~~compared to the previous edition~~ are as follows:

- addition of a new high\_level business scenario: spatial query;
- addition of a new requirement: large model presentation: bounding boxes;
- addition of a new requirement: large model presentation: occurrence tree;
- addition of a new metadata: this -URI defining the URI of the current data set;
- updates in the services definition;
- addition of a new service: get\_available\_formats.

Any feedback or questions on this document should be directed to the user's national standards body. A complete listing of these bodies can be found at [www.iso.org/members.html](http://www.iso.org/members.html).

Field Code Changed

Field Code Changed

Field Code Changed

## Introduction

There is a confirmed opportunity for industries to have a structured approach on 3D product visualization and to enable integration of product data in visualization applications, across the life cycle of the product in all areas of a company.

The integrated standard for the exchange of product model data (STEP) in the enterprise processes has great value to contribute to this goal.

Business scenarios exist related to the visualization of product data other than geometry (e.g. metadata, production data, financial data).

The ability to trustfully share, distribute, collect, store, maintain, transfer, process and present product data associated with its geometry to support business processes distributed in enterprise networks is a key component of the digital transformation of our industries.

As long as data sets are managed by a single management system, we can ensure quality and traceability of the data set. However, when data is shared with partners in a supply chain, the data sets are usually copied and extracted from their initial management system and they lose all the traceability and links with the other product data. This document provides a solution to this problem.

This document is the first of a series of documents to provide an integrated framework using the ISO 10303 series to allow the consumption of product data in supply-chains and in companies using geometries as human-computer interface to access these product data through visualization applications. This is realized by using metadata to support the audit trail of the transformation of a geometry definition, and web services based on the utilisation of these metadata. This framework can also be used for automated product data consumption by software.

~~Annex A~~ Annex A contains an identifier that unambiguously identifies this document in an open information system.

ISO/DTS 23301

<https://standards.iteh.ai/catalog/standards/sist/8cb5d608-e3fe-4de1-a878-0c00602918fd/iso-dts-23301>

## STEP geometry visualization services

### 1 Scope

This document defines a set of metadata to support the audit trail of the transformation of a geometry definition, while it is distributed and shared in supply-chains, to ensure the traceability of geometric model data. It also defines a set of web services based on the utilisation of these metadata.

The following are within the scope of this document:

- metadata definitions for geometry transformation audit trail:
  - syntax for storing these metadata in geometry data sets in various formats;
  - conformance level for implementers and business processes;
  - definitions of web services to query the geometric model data set and its associated metadata.

The following are outside the scope of this document:

- service specifications for CAD operations;
- specifications of a cybersecurity infrastructure to enable web services;
- the technical implementation of a STEP geometry services client or server;
- any geometric model definition;
- any product and manufacturing information (PMI) definition;
- archiving.

### 2 Normative references

The following documents are referred to in the text in such a way that some or all of their content constitutes requirements of this document. For dated references, only the edition cited applies. For undated references, the latest edition of the referenced document (including any amendments) applies.

ISO 8601-1, *Date and time — Representations for information interchange — Part 1: Basic rules*

ISO 10303-21, *Industrial automation systems and integration — Product data representation and exchange — Part 21: Implementation methods: Clear text encoding of the exchange structure*

ISO 14306:2017, *Industrial automation systems and integration — JT file format specification for 3D visualization*

ISO 16684-1:2019, *Graphic technology — Extensible metadata platform (XMP) — Part 1: Data model, serialization and core properties*

ISO 16684-3, *Graphic technology — Extensible metadata platform (XMP) specification — Part 3: JSON-LD serialization of XMP*

ISO 17506, *Industrial automation systems and integration — COLLADACOLLADA™ digital asset schema specification for 3D visualization of industrial data*

## **ISO/DTS 23301:(E)**

ISO/IEC 19775-1, *Information technology — Computer graphics, image processing and environmental data representation — Extensible 3D (X3D) — Part 1: Architecture and base components*

ISO/IEC 21778:2017, *Information technology — The JSON data interchange syntax*

### **3 Terms and definitions**

For the purposes of this document, the following terms and definitions apply.

ISO and IEC maintain terminology databases for use in standardization at the following addresses:

- ISO Online browsing platform: available at <https://www.iso.org/obp>
- IEC Electropedia: available at <https://www.electropedia.org/>

#### **3.1**

##### **boundary representation solid model**

###### **B-rep**

type of geometric model in which the size and shape of a solid is defined in terms of the faces, edges and vertices which make up its boundary

[SOURCE: ISO 10303-2:—1, 3.3.5]

#### **3.2**

##### **constructive solid geometry**

###### **CSG**

type of geometric modelling in which a solid is defined as the result of a sequence of regularized Boolean operations operating on solid models

[SOURCE: ISO 10303-2:—, 3.3.11]

#### **3.3**

##### **derived geometry**

geometric representation generated from another representation

Note 1 to entry: The derivation is realized by actions such as using another representation method, another format, approximations, simplification.

EXAMPLE A "6-face B-rep" (3.1)(3.1) is derived from a CSG (3.2)(3.2) "solid block".

#### **3.4**

##### **converted geometry**

result of changing the data format of a geometry

Note 1 to entry: The import and export operations in a CAD system, produce converted geometry.

Note 2 to entry: Converted geometry is a kind of *derived geometry* (3.3)–(3.3).

#### **3.5**

##### **design intent**

intentions of the designer of a model with regard to how it may be instantiated or modified

Note 1 to entry: The aspects of design intent relevant to ISO 10303-108 are concerned with the information represented in the parameters and constraints associated with a model. More generally, design intent also includes

<sup>1</sup> Under preparation. Stage at the time of publication: ISO/DIS 10303-2:2023.



the procedural or construction history of a model, which is the subject of ISO 10303-55. All aspects of design intent influence the behaviour of a model under editing operations.

[SOURCE: ISO 10303-2:—, 3.16.10]

### 3.6 geometry data set

serialized representation of geometry data which can be exchanged between two systems

Note 1 to entry: The geometry data set can be instantiated into a single file, a set of files, a web service payload or the result of a database query.

### 3.7 geometry service

web-service supporting retrieval of geometry-related data

Note 1 to entry: Geometry related data can be:

- a *geometry data set* (3.6)(3.6) or one of its subsets;
- geometric properties of a geometry data;
- metadata related to a geometry data set;
- non-geometric product data related to a geometry identifier.

### 3.8 level of detail LOD

description of detail and extent of geometric model information [ISO/DTS 23301](https://standards.iteh.ai/catalog/standards/sist/8cb5d608-e3fe-4de1-a878-0c00602918fd/iso-dts-23301)

### 3.9 native geometry native CAD

data format used to write to memory using the authoring CAD application's CAD kernel

Note 1 to entry: This capability is used in order to save the *original geometry* (3.41)(3.11) model as data and to reuse it without any loss with the original authoring tool. *Original geometry* is often considered to be replicated only by reading the *native geometry* from memory into the CAD / modelling application using the same system, version or installation, used to initially author the *original geometry*, although even this is not guaranteed.

### 3.10 occurrence tree

flat representation of an assembly structure where each individual is represented and has its own attributes, e.g. placement

Note 1 to entry: See an example of occurrence tree in [Annex G-Annex H](#).

### 3.11 original geometry

geometry as defined by a modeler (human being) in a CAD tool using CAD authoring functions based on mathematical constructs

Note 1 to entry: The *original geometry* is the first initial geometry construction that holds the design intent.

## **ISO/DTS 23301:(E)**

Note 2 to entry: This is also often referred to as *native CAD* (3.9)(3.9). However, a *native CAD* is in fact referring to the native CAD kernel and CAD format of the CAD tool manipulating the geometry. It therefore can also be any geometry derived from another CAD format.

Note 3 to entry: Geometry as initially authored in a CAD / modelling application using that tool's geometric modelling system, operations, and database. The author's *design intent* (3.5)(3.5), as well as the characteristics and artefacts of the application's implementation of geometric and solid modelling algorithms, are present in the original geometry, thus distinguishing it from "exact geometry". *Original geometry* can take on many forms, e.g. *B-rep* (3.1), *CSG* (3.2)(3.1), *CSG* (3.2), hybrid, tessellated, and be modelled using many modelling paradigms, e.g. procedural, explicit, dual, parametric features with construction history.

Note 4 to entry: While often misused and interchanged for each other, *original geometry* is distinguished from *native geometry* (3.9)(3.9).

### **3.1** **procedural model** **generative model** **history-based model**

~~model described in terms of the operation of a sequence of procedures (which may include the solution of constraint sets), as opposed to an explicit or evaluated model which captures the end result of applying those procedures.~~

~~Note 1 to entry: Although procedural models are outside the scope of ISO 10303-108, they are defined here to make an important distinction between two fundamentally different modelling approaches. The present resource is intended to be compatible with ISO 10303-55, which provides representations for the exchange of procedurally defined models.~~

~~[SOURCE: ISO 10303-2:—, 3.16.28]~~

### **3.2** **3.12** **product and manufacturing information** **PMI**

non-geometric attributes in 3D CAD and collaborative product development systems necessary for manufacturing product components and assemblies

Note 1 to entry: PMI may include geometric dimensions and tolerances, symbols, notes, surface finish, and material specifications.

[SOURCE: ISO 10303-2:—, 3.1.233]

### **3.13** **tessellated geometry**

geometry composed of a large number of planar tiles, usually of triangular shape

Note 1 to entry: Tessellated geometry is frequently used as an approximation to the exact shape of an object.

[SOURCE: ISO 10303-2:—, 3.3.46]

### **3.14** **3D visualization**

visual presentation on a screen or another media of graphical and textual three-dimensional representations of a set of data representing an object, information or results of a computational process in order to facilitate capture of the understanding of the object, for visual information sharing with users and sometimes to promote decision process by a human looking at the data visualized in a medium

[SOURCE: ISO 14306:2017, 3.1.1]

## 4 High level business scenarios

### 4.1 General

Geometry services can be deployed in a large variety of business scenarios. Some of them are presented below.

### 4.2 Check for updates

A supplier receives, from an original equipment manufacturer (OEM), a 3D model of a part that the company has to manufacture.

During the development process, the supplier and the OEM can access the version information that the supplier has and confirm that it is the appropriate version through web services.

The following metadata shall be available: creator, name, ID and URI of the 3D model, from the 3D model owner and from the 3D model provider. It also needs the level of detail (LOD) of the data set to confirm that it can execute its task with the available information.

### 4.3 Visualization #number 1

A user shall perform a review and receives a metadata file.

The user queries the repository with the product Id/version in the metadata file to get the data set to load and visualize.

The query specifies the format and LOD to review.

The following metadata shall be available: ID and URI of the 3D model from the 3D model provider.

### 4.4 Visualization #number 2

From a large assembly data set already loaded for fast visualization, query the repository for a more detailed representation of a part with special concern [exact boundary representation (B-rep) with PMI].

The following metadata shall be available: ID and URI of the 3D model from the 3D model provider.

### 4.5 Retrieve product lifecycle management (PLM) data of a product

A user is viewing a part in a visualization software. The current data set contains only geometry.

Query the repository with the product ID/version to get PLM attributes of this product and display them in the viewer.

The following metadata shall be available: ID and URI of the 3D model from the 3D model owner.

### 4.6 Archiving

Ensure traceability from the original geometry data set in a Product Data Management (PDM) system and the geometry data set in an archiving system.

The following metadata shall be available: ID, URI, creation date, name, creator of the 3D model from the 3D model owner.

### 4.7 Spatial query

Retrieve a low LOD representation of a large assembly (e.g. aircraft, energy plant, ship, ...) in a web viewer. Using this simplified representation, define a 3D spatial query to send to the server to get a sub-assembly with a more detailed geometry (tessellation or exact geometry).

The following metadata shall be available: ID and URI of the 3D model from the 3D model provider.

## 5 Information requirements

### 5.1 Review of geometry, topology and shape definitions

The concepts defined below are extracted from ISO 10303-41, ISO 10303-42, ISO 10303-43.

This document considers a geometry data set as a collection of geometric models as defined in ISO 10303-42.

The geometric models in ISO 10303-42 provide data specifications describing the precise size and shape of three-dimensional solid objects. The geometric shape models provide a complete representation of the shape, which in many cases includes both geometric and topological data. Included here are the two classical types of solid model, constructive solid geometry (CSG) and B-rep. Tessellation is another common representation for geometry which provides light-weight data sets but is less accurate than the two previous solid model types, but which other entities, providing a rather less complete description of the geometry of a product, and with less consistency constraints, are also included.

The geometric models are composed of geometric and topological data. Their primary application is for explicit representation of the shape or geometric form of a product model. The shape representation has been designed to facilitate stable and efficient communication when mapped to a physical file.

The geometry is exclusively the geometry of parametric curves and surfaces. It includes the point, curve and surface entities and other entities, functions and data types necessary for their definition. A common scheme has been used for the definition of both two-dimensional and three-dimensional geometry. All geometry is defined in a coordinate system which is established as part of the context of the item which it represents.

The topology is concerned with connectivity relationships between objects rather than with the precise geometric form of objects. ISO 10303-42 defines the basic topological entities and specialized subtypes of these. In some cases, the subtypes have geometric associations. Also included are functions, particularly constraint functions, and data types necessary for the definitions of the topological entities.

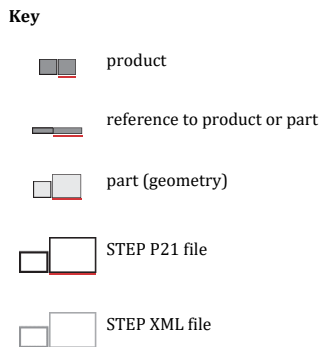
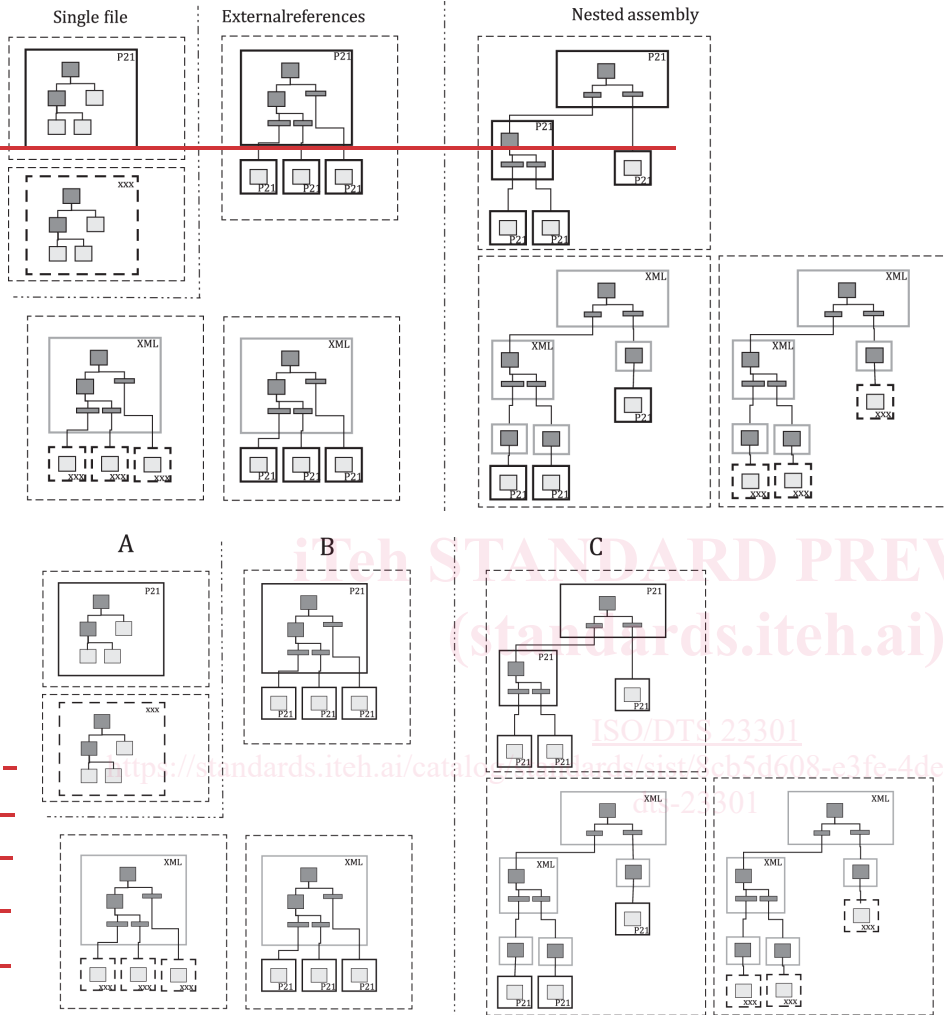
In addition to the geometric models, other product related information can be instantiated in a geometry data set, e.g. saved view and display attributes, e.g. colour, transparency, texture, PMI represented as graphical geometry helpers or semantic metadata, links to product metadata.

### 5.2 Geometry data set definition

The geometry data set (3.6) is a collection of models as defined in ISO 10303-42 with or without assembly structure. In addition to the geometric models, other product related information can be instantiated in a geometry data set, e.g. PMI represented as graphical geometry helpers or semantic metadata, links to product metadata.

The geometry data set can be instantiated into a single file, a set of files (see [Figure 1](#)), a web service payload or by the result of a database query.

**EXAMPLES** Simple shape CSG, simple shape B-rep, complex part without PMI, complex part with PMI, assembly of parts with tessellated shapes and PMI.



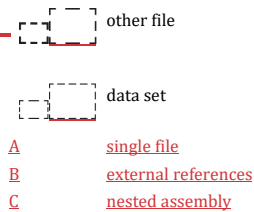


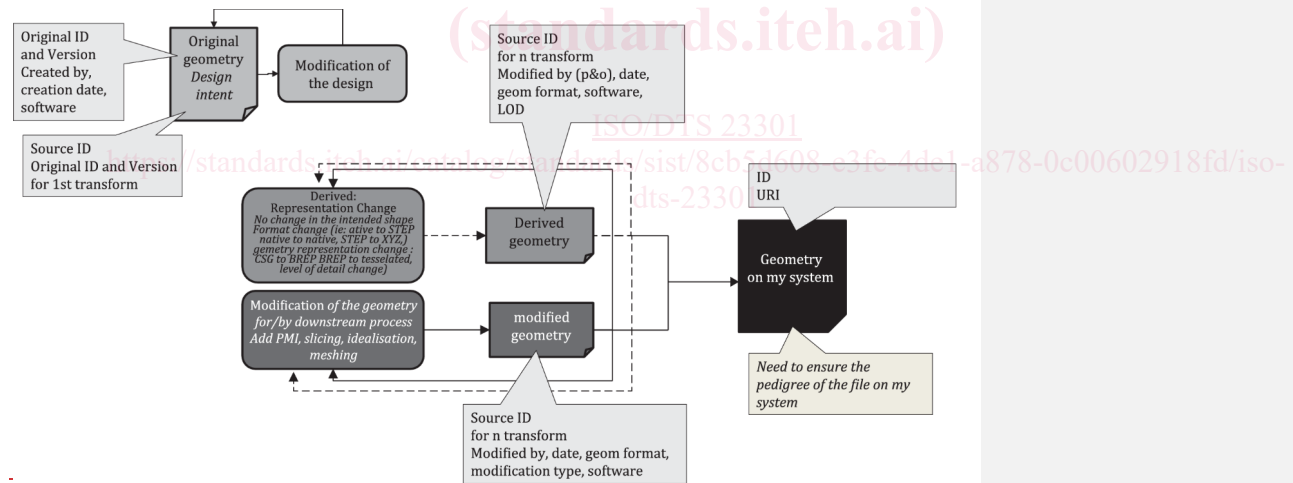
Figure 4.1 — Examples of geometry data set file organization

### 5.3 Metadata for STEP geometry services

#### 5.3.1 General

Geometry data sets can be linked together as long as they are under the management of a single PLM system. This allows audit trails and transformation processes to be controlled.

Once a geometry data set is taken out of a PLM system, the traceability to the evolution of this data set is lost. There is a need for a mechanism that allows keeping track of the geometry data set origins and evolutions. Figure 2 illustrates how the metadata are added when a geometry data set leaves the management system of the original geometry data set owner and is modified by other actors before arriving in a destination system.



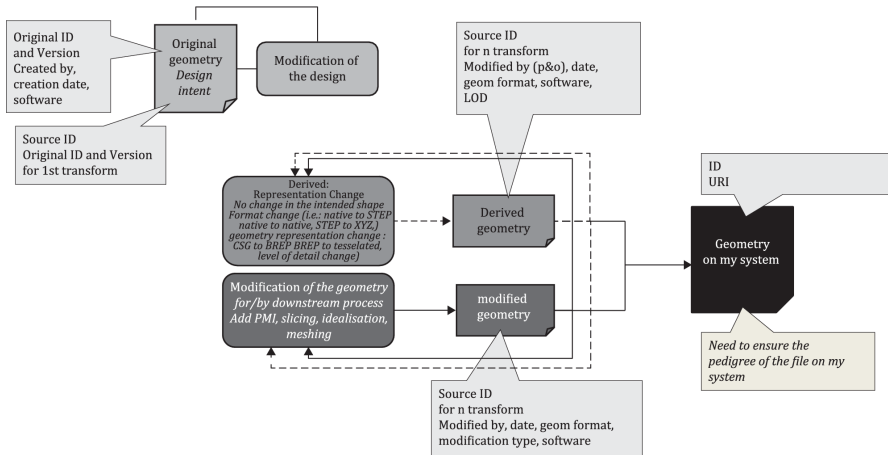


Figure 2-2 — Updates of metadata

In addition to data traceability, information searching and big data analysis, especially in the web environment, benefit from using semantic metadata to index information from geometry data sets in a multiplicity of formats.

5.3.2 XMP

5.3.2 Extensible metadata platform (XMP)

Metadata shall be represented in Extensible Markup Language (XML) and the grammar of the XML representing the metadata shall be defined according to the extensible metadata platform (XMP) specification ISO 16684-1. XMP is a technology for embedding metadata into documents and was first published in ISO 16684-1 in 2012.

5.3.3 Included namespaces

XMP metadata is organized into namespaces (see ISO 16684-1:2019, 6.2) and may include properties from one or more namespace. There is no requirement that all properties from a namespace shall be present. The namespaces definitions included in this document are given in Table 1 — Included namespaces Table 1.

Table 1-1 — Included namespaces

Namespace	Property
Dublin Core	dc:contributor dc:creator dc:format dc:title
XMP basic	xmp:CreateDate xmp:CreatorTool xmp:ModifyDate
XMP media management	xmpMM: InstanceID xmpMM: DocumentID xmpMM: OriginalDocumentID