



FINAL DRAFT International Standard

ISO/FDIS 9374-4

Cranes — Information to be provided —

Part 4: Jib cranes

*Appareils de levage à charge suspendue — Informations à
fournir —*

Partie 4: Grues à flèche

ISO/TC 96/SC 8

Secretariat: JISC

Voting begins on:
2024-05-09

Voting terminates on:
2024-07-04

iTeh Standards
(<https://standards.iteh.ai>)
Document Preview

ISO/FDIS 9374-4

<https://standards.iteh.ai/catalog/standards/iso/fd19d3c9-97c4-4966-b334-e4653b74f2b1/iso-fdis-9374-4>

RECIPIENTS OF THIS DRAFT ARE INVITED TO SUBMIT, WITH THEIR COMMENTS, NOTIFICATION OF ANY RELEVANT PATENT RIGHTS OF WHICH THEY ARE AWARE AND TO PROVIDE SUPPORTING DOCUMENTATION.

IN ADDITION TO THEIR EVALUATION AS BEING ACCEPTABLE FOR INDUSTRIAL, TECHNOLOGICAL, COMMERCIAL AND USER PURPOSES, DRAFT INTERNATIONAL STANDARDS MAY ON OCCASION HAVE TO BE CONSIDERED IN THE LIGHT OF THEIR POTENTIAL TO BECOME STANDARDS TO WHICH REFERENCE MAY BE MADE IN NATIONAL REGULATIONS.

iTeh Standards
(<https://standards.iteh.ai>)
Document Preview

ISO/FDIS 9374-4

<https://standards.iteh.ai/catalog/standards/iso/fd19d3c9-97c4-4966-b334-e4653b74f2b1/iso-fdis-9374-4>



COPYRIGHT PROTECTED DOCUMENT

© ISO 2024

All rights reserved. Unless otherwise specified, or required in the context of its implementation, no part of this publication may be reproduced or utilized otherwise in any form or by any means, electronic or mechanical, including photocopying, or posting on the internet or an intranet, without prior written permission. Permission can be requested from either ISO at the address below or ISO's member body in the country of the requester.

ISO copyright office
CP 401 • Ch. de Blandonnet 8
CH-1214 Vernier, Geneva
Phone: +41 22 749 01 11
Email: copyright@iso.org
Website: www.iso.org

Published in Switzerland

Contents		Page
Foreword.....		iv
1	Scope.....	1
2	Normative references.....	1
3	Terms and definitions.....	1
4	Information to be provided by the purchaser with the enquiry or order.....	1
5	Information to be provided by the manufacturer.....	1
5.1	Technical information.....	1
5.2	Dimensions.....	2
Annex A (informative) Sample format and information to be provided by the purchaser with the enquiry or order.....		5
Bibliography.....		17

iTeh Standards
(<https://standards.iteh.ai>)
Document Preview

[ISO/FDIS 9374-4](https://standards.iteh.ai/catalog/standards/iso/fd19d3c9-97c4-4966-b334-e4653b74f2b1/iso-fdis-9374-4)

<https://standards.iteh.ai/catalog/standards/iso/fd19d3c9-97c4-4966-b334-e4653b74f2b1/iso-fdis-9374-4>

Foreword

ISO (the International Organization for Standardization) is a worldwide federation of national standards bodies (ISO member bodies). The work of preparing International Standards is normally carried out through ISO technical committees. Each member body interested in a subject for which a technical committee has been established has the right to be represented on that committee. International organizations, governmental and non-governmental, in liaison with ISO, also take part in the work. ISO collaborates closely with the International Electrotechnical Commission (IEC) on all matters of electrotechnical standardization.

The procedures used to develop this document and those intended for its further maintenance are described in the ISO/IEC Directives, Part 1. In particular, the different approval criteria needed for the different types of ISO document should be noted. This document was drafted in accordance with the editorial rules of the ISO/IEC Directives, Part 2 (see www.iso.org/directives).

ISO draws attention to the possibility that the implementation of this document may involve the use of (a) patent(s). ISO takes no position concerning the evidence, validity or applicability of any claimed patent rights in respect thereof. As of the date of publication of this document, ISO had not received notice of (a) patent(s) which may be required to implement this document. However, implementers are cautioned that this may not represent the latest information, which may be obtained from the patent database available at www.iso.org/patents. ISO shall not be held responsible for identifying any or all such patent rights.

Any trade name used in this document is information given for the convenience of users and does not constitute an endorsement.

For an explanation of the voluntary nature of standards, the meaning of ISO specific terms and expressions related to conformity assessment, as well as information about ISO's adherence to the World Trade Organization (WTO) principles in the Technical Barriers to Trade (TBT), see www.iso.org/iso/foreword.html.

This document was prepared by Technical Committee ISO/TC 96, *Cranes*, Subcommittee SC 8, *Jib cranes*.

This second edition cancels and replaces the first edition (ISO 9374-4:1989), which has been technically revised.

The main changes are as follows:

- [Clause 3](#) has been added;
- [Figures 1](#) to [3](#) have been redrawn;
- [Annex A](#) has been rearranged.

A list of all parts in the ISO 9374 series can be found on the ISO website.

Any feedback or questions on this document should be directed to the user's national standards body. A complete listing of these bodies can be found at www.iso.org/members.html.

Cranes — Information to be provided —

Part 4: Jib cranes

1 Scope

This document specifies information to be provided by:

- a) a purchaser in enquiring about or ordering a jib crane;
- b) a manufacturer in tendering for or supplying a jib crane.

2 Normative references

The following documents are referred to in the text in such a way that some or all of their content constitutes requirements of this document. For dated references, only the edition cited applies. For undated references, the latest edition of the referenced document (including any amendments) applies.

ISO 4306-1, *Cranes — Vocabulary — Part 1: General*

ISO 4306-4, *Cranes — Vocabulary — Part 4: Jib cranes*

ISO 9374-1, *Cranes — Information to be provided — Part 1: General*

ISO 8686-4, *Cranes — Design principles for loads and load combinations — Part 4: Jib cranes*

3 Terms and definitions

For the purposes of this document, the terms and definitions given in ISO 4306-1 and ISO 4306-4 apply.

ISO and IEC maintain terminology databases for use in standardization at the following addresses:

- ISO Online browsing platform: available at <https://www.iso.org/>
- IEC Electropedia: available at <https://www.electropedia.org/>

4 Information to be provided by the purchaser with the enquiry or order

The purchaser should provide the information given in [Annex A](#) to enable the crane manufacturer to offer or to supply the most suitable jib crane and equipment to satisfy the duty requirements and service conditions.

5 Information to be provided by the manufacturer

5.1 Technical information

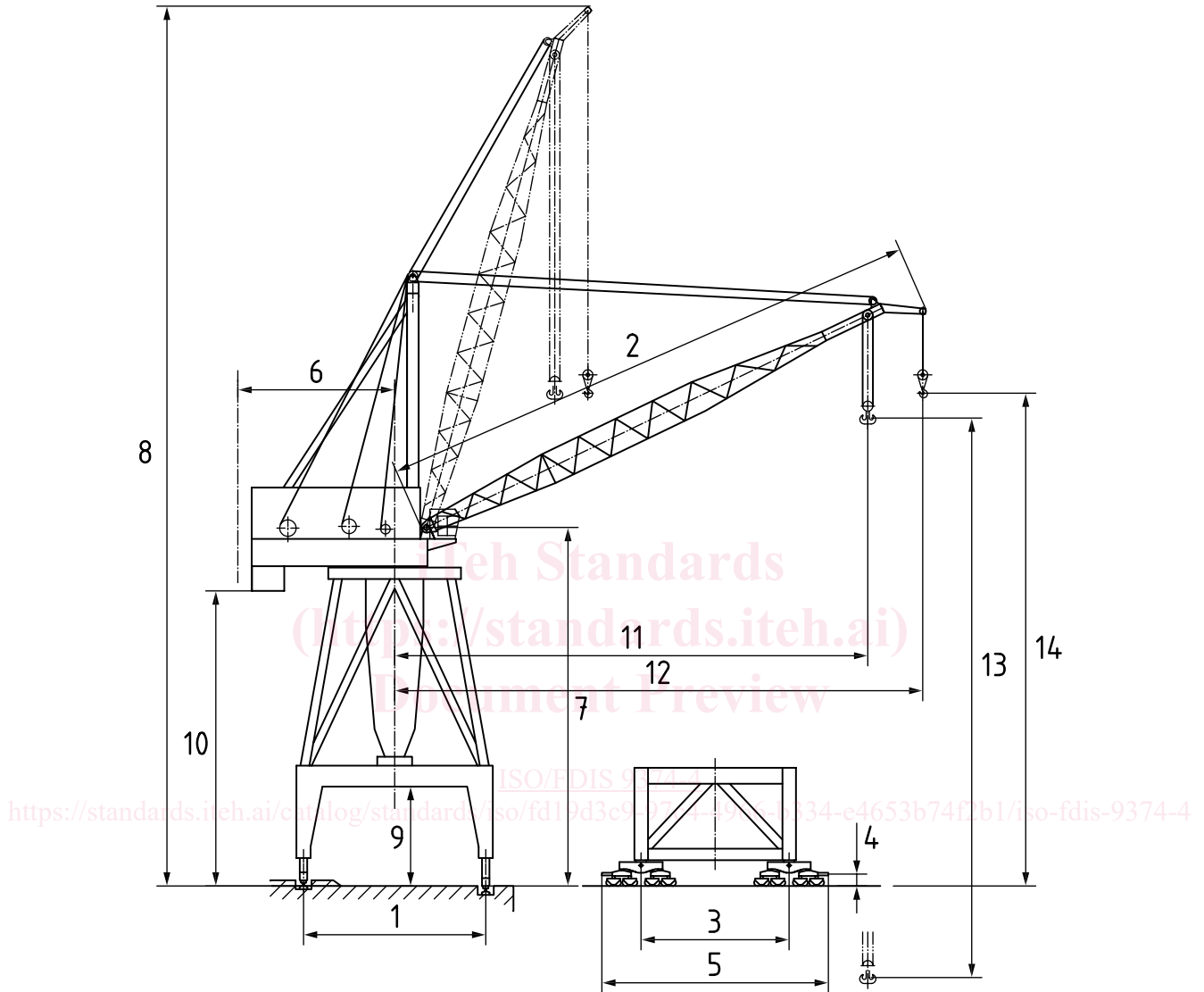
The information provided by the manufacturer shall include:

- a) the information provided by the manufacturer in accordance with ISO 9374-1;
- b) erection information, when requested.

The manufacturer shall supply all loads applied by the crane in accordance with ISO 8686-4.

5.2 Dimensions

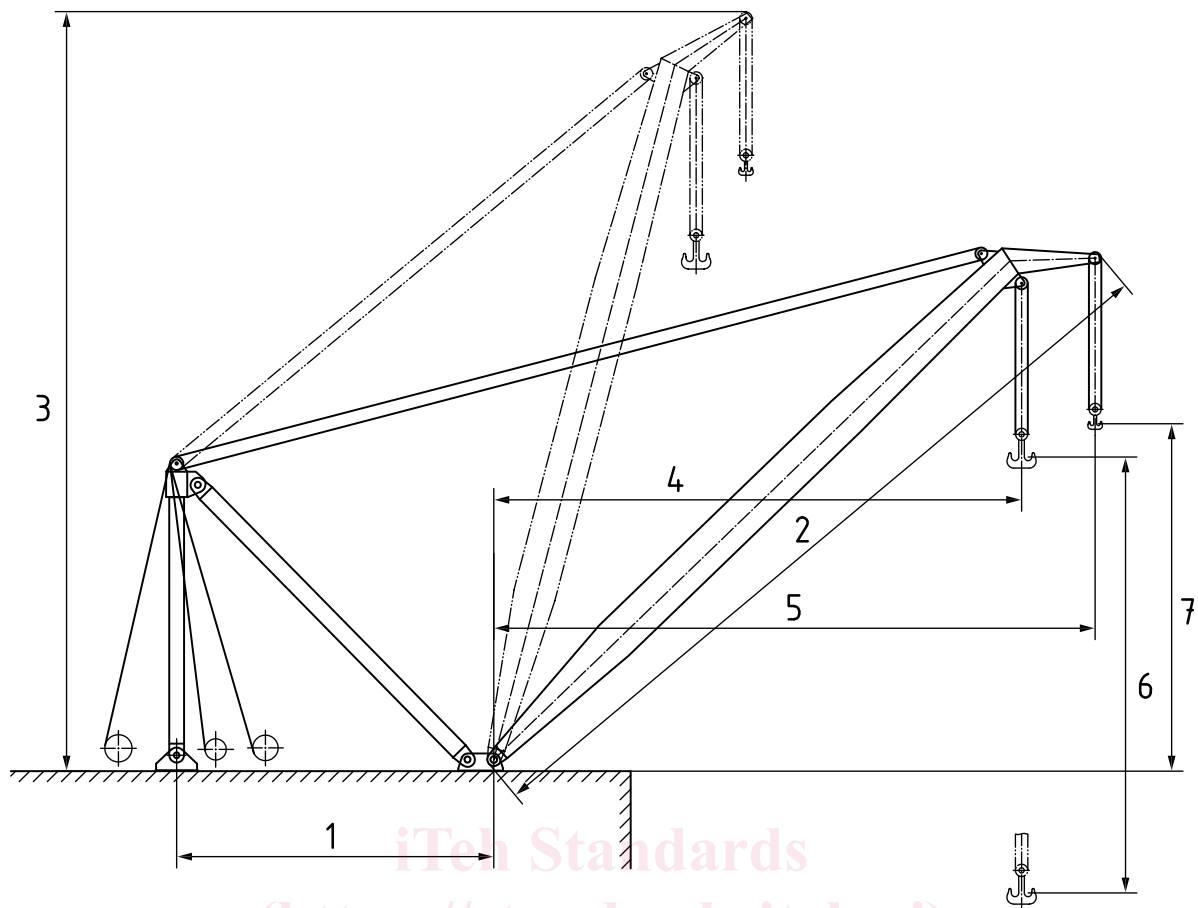
The manufacturer shall provide the necessary dimensions to install and use the crane. [Figures 1](#) to [3](#) show examples of drawings with minimum dimensions.



Key

- | | | | |
|---|--|----|---|
| 1 | span | 8 | clearance height of boom |
| 2 | boom length | 9 | clearance under portal |
| 3 | crane wheel base | 10 | clearance under rotating platform |
| 4 | buffer height | 11 | working radius range for main hook |
| 5 | buffer to buffer (buffer uncompressed) | 12 | working radius range for auxiliary hook |
| 6 | tailswing radius | 13 | hook height range for main hook |
| 7 | boom hinge elevation above rail | 14 | hook height range for auxiliary hook |

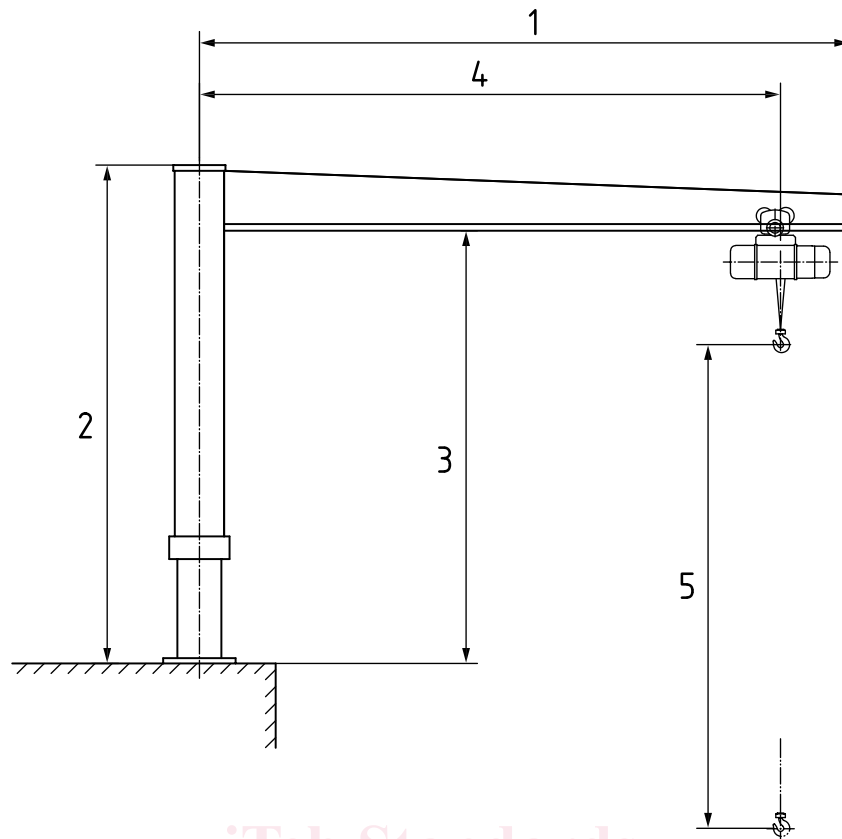
Figure 1 — Examples of dimensions for portal or semi-portal slewing crane with single boom



Key

- | | | | |
|---|--------------------------------------|---|---|
| 1 | distance from boom hinge to mast leg | 5 | working radius range for auxiliary hook |
| 2 | boom length | 6 | hook height range for main hook |
| 3 | clearance height of boom | 7 | hook height range for auxiliary hook |
| 4 | working radius range for main hook | | |

Figure 2 — Examples of dimensions for derrick crane



Key

- | | | | |
|---|----------------------------|---|----------------------|
| 1 | cantilever length | 4 | working radius range |
| 2 | clearance height of crane | 5 | hook height range |
| 3 | clearance under cantilever | | |

Figure 3 — Examples of dimensions for cantilever crane

<https://standards.itech.ai/iso/fdis-9374-4>

<https://standards.itech.ai/catalog/standards/iso/fd19d3c9-97c4-4966-b334-e4653b74f2b1/iso-fdis-9374-4>

Annex A

(informative)

Sample format and information to be provided by the purchaser with the enquiry or order

See [Tables A.1](#) to [A.6](#).

Table A.1 — Common information to be provided by the purchaser

Purchase enquiry or order form			
Short description of works:			
Required rated capacity (payload plus non-fixed lifting attachment)			
All required rated capacities should be indicated as follows:			
a)	Main hoist:		
	Maximum capacity and radius:	t (load) at	m (radius)
	Maximum radius and capacity:	m (radius) at	t (load)
b)	Auxiliary hoist (if required):		
	Maximum capacity and radius:	t (load) at	m (radius)
	Maximum radius and capacity:	m (radius) at	t (load)
Required dimension			
Load-lifting height:			m
Load-lowering depth:			m
Maximum radius:			m
Minimum radius:			m
Slewing range (only for slewing crane):			°
Maximum allowable tailswing radius (only for slewing crane):			m
Distance of travelling (only for travelling crane):			m
Maximum overall height of crane (if required):			m
Clearance below boom (if required):		m at radius	m

Table A.1 (continued)

Load-lifting attachment			
<input type="checkbox"/> hook	<input type="checkbox"/> grab	<input type="checkbox"/> container spreader	
<input type="checkbox"/> magnet	<input type="checkbox"/> other, describe further		
Special speed requirements			
Operating speeds	Nominal speed (rated load)	Slow or creep speed (if required)	Maximum speed with reduced load (if required)
Main hoist: m/min m/min m/min
Auxiliary hoist: m/min m/min m/min
Luffing (if required): m/min m/min m/min
Traverse (if required): m/min m/min m/min
Slewing (if required): rpm rpm rpm
Travel: m/min m/min m/min
Any special requirements:			
.....			
.....			
.....			
.....			
.....			

iTeh Standards

(https://standards.itih.ai)

Document Preview

ISO/FDIS 9374-4

<https://standards.itih.ai/catalog/standards/iso/fd19d3c9-97c4-4966-b334-e4653b74f2b1/iso-fdis-9374-4>