



Designation: D1435 – 13

Standard Practice for Outdoor Weathering of Plastics¹

This standard is issued under the fixed designation D1435; the number immediately following the designation indicates the year of original adoption or, in the case of revision, the year of last revision. A number in parentheses indicates the year of last reapproval. A superscript epsilon (ϵ) indicates an editorial change since the last revision or reapproval.

This standard has been approved for use by agencies of the Department of Defense.

1. Scope*

1.1 This practice is intended to cover procedures for the exposure of plastic materials to weather.

NOTE 1—See Practice [G24](#) for aging under glass.

1.2 This practice is limited to the method by which the material is to be exposed and the general procedure to be followed. It is intended for use with finished articles of commerce as well as with all sizes and shapes of test specimens.

1.3 Means of evaluation of the effects of weathering will depend on the intended use for the test material.

1.4 The values stated in SI units are to be regarded as the standard.

1.5 *This standard does not purport to address all of the safety concerns, if any, associated with its use. It is the responsibility of the user of this standard to establish appropriate safety and health practices and determine the applicability of regulatory limitations prior to use.*

NOTE 2—This standard and ISO 877.2-2009, Method A, are technically equivalent.

2. Referenced Documents

2.1 ASTM Standards:²

[D883 Terminology Relating to Plastics](#)

[D1600 Terminology for Abbreviated Terms Relating to Plastics](#)

[E772 Terminology of Solar Energy Conversion](#)

[G7 Practice for Atmospheric Environmental Exposure Testing of Nonmetallic Materials](#)

[G24 Practice for Conducting Exposures to Daylight Filtered Through Glass](#)

¹ This practice is under the jurisdiction of ASTM Committee [D20](#) on Plastics and is the direct responsibility of Subcommittee [D20.50](#) on Durability of Plastics.

Current edition approved June 1, 2013. Published July 2013. Originally approved in 1956. Last previous edition approved in 2005 as D1435 - 05. DOI: 10.1520/D1435-13.

² For referenced ASTM standards, visit the ASTM website, www.astm.org, or contact ASTM Customer Service at service@astm.org. For *Annual Book of ASTM Standards* volume information, refer to the standard's Document Summary page on the ASTM website.

[G113 Terminology Relating to Natural and Artificial Weathering Tests of Nonmetallic Materials](#)

[G141 Guide for Addressing Variability in Exposure Testing of Nonmetallic Materials](#)

[G147 Practice for Conditioning and Handling of Nonmetallic Materials for Natural and Artificial Weathering Tests](#)

2.2 ISO Standard:

[ISO 877.2-2009 Plastics—Methods of exposure to solar radiation—Part 2: Direct weathering and exposure behind glass³](#)

3. Terminology

3.1 *Definitions*—For definitions of technical terms pertaining to plastics used in this practice, see Terminologies [D883](#), [D1600](#), [G113](#), and [E772](#).

4. Significance and Use

4.1 Tests conducted in accordance with this practice are used to evaluate the stability of plastic materials when they are exposed outdoors. The relative durability of plastics in outdoor use can be very different depending on the location of the exposure because of differences in ultraviolet (UV) radiation, time of wetness, temperature, pollutants, and other factors. It cannot be assumed, therefore, that results from one exposure in a single location will be useful for determining relative durability in a different location. Exposures in several locations with different climates that represent a broad range of anticipated service conditions are recommended.

4.1.1 Because of year-to-year climatological variations, results from a single exposure test cannot be used to predict the absolute rate at which a material degrades. Several years of repeat exposures are needed to get an average test result for a given location.

4.2 The results of short-term exposure tests can provide an indication of relative outdoor performance, but they should not be used to predict the absolute long-term performance of a material. The results of tests conducted for less than twelve months will depend on the particular season of the year in which they begin.

³ Available from American National Standards Institute (ANSI), 25 W. 43rd St., 4th Floor, New York, NY 10036, <http://www.ansi.org>.

*A Summary of Changes section appears at the end of this standard

5. Apparatus

5.1 The test site shall conform to the requirements of Practice G7. Unless otherwise specified, position exposure racks so that they face the equator. The angle of the exposure rack relative to the horizontal can vary depending upon the end-use conditions that are being evaluated.

NOTE 3—Test sites at latitudes less than 23°27' from the equator in either hemisphere will have a period during the year when the declination of the sun will exceed the latitude of the site.

5.1.1 *At-Latitude Racks*—These racks shall be adjusted such that the exposed surfaces are at an angle from the horizontal corresponding exactly to the site latitude angle (Note 4).

NOTE 4—Exposure at the latitude angle is typically used to compare exposures from different locations when solar radiation is the main factor, and temperature and moisture are not being considered.

5.1.2 *45° Racks*—These racks shall be adjusted such that the exposed surfaces of specimens are at an angle of 45° to the horizontal.

5.1.3 *90° Racks*—These racks shall be adjusted such that the exposed surfaces of specimens are at an angle of 90° to the horizontal.

5.1.4 *5° Racks*—These racks shall be adjusted such that the exposed surfaces of specimens are at an angle of 5° to the horizontal.

5.1.5 *Horizontal Racks*—These racks shall be positioned such that the exposed surfaces of the specimens are horizontal (Note 5).

NOTE 5—To provide moisture runoff for most horizontal-type testing of plastics, 5° south exposure is usually preferred. However, plastic roofing membranes, artificial turf, and other plastics that may be exposed at horizontal in their end-use condition should be exposed at 0° horizontal.

5.1.6 *Other-Angle Racks*—These racks shall be adjusted such that the exposed surfaces of specimens are at a tilt angle mutually agreed upon between the interested parties.

5.2 *Materials and Manner of Construction*—Test racks and hardware shall conform to the requirements of Practice G7 and shall provide for attachment of specimens or holders of any convenient width and length. The structural members of the test racks shall not constitute a backing to the specimens under test unless it is used in relation to an end-use system. Fasteners used to attach specimens to the test rack shall provide for secure attachment but allow specimens to expand or contract with thermal changes, moisture absorption or desorption, or plasticizer loss.

5.3 Specimen Holders:

5.3.1 Some specimens under test will not be of an exact size for mounting directly on the frame. Specimen holders should be used to support the many sizes of specimens involved in this testing. The specimen holder shall not constitute a backing for that portion of the material to be evaluated unless it is used in relation to an end-use system.

5.3.2 The specimen holders shall be constructed of an inert material. (Aluminum extruded shapes have been found to be suitable.)

5.3.3 The design of the specimen holders shall be such that each specimen or sheet in a holder cannot shift its position, yet

is not constrained (that is, it is free to expand or contract with thermal changes, swell because of moisture absorption, or shrink because of plasticizer loss).

5.3.4 *Frame Holders*—These holders are in the shape of a frame that may be subdivided as necessary to provide proper spacing of the specimens. The exposure aperture of each frame shall be of sufficient size to expose the entire test area of each specimen when sufficient specimens are contained. This method of mounting is shown in Fig. 1.

5.3.5 *Plate Holders*—This type of holder is a universal panel consisting of a slotted-aluminum plate on which electrical white glaze spool or knob porcelain insulators are mounted at proper positions to affix various-sized specimens. The specimens are mounted in the grooves of the insulators at a fixed distance of at least 11 mm from the slotted back plate. The insulators provide inert mounting while the slotted plate permits free circulation of air behind the specimen. This method of mounting is shown in Fig. 2.

5.4 Instruments for Measuring Climatological Data:

5.4.1 *Instruments Used to Measure Ambient Temperature and Relative Humidity*—Instruments and procedures used for measurement of ambient temperature and relative humidity shall be in accordance with Practice G7.

5.4.2 *Instruments Used to Measure Solar Radiation*—Instruments and calibration procedures used for measurement of total solar radiation, total solar ultraviolet radiation, or narrow band solar ultraviolet radiation shall be in accordance with Practice G7.

6. Sampling

6.1 Sampling shall be in accordance with the pertinent considerations outlined in Guide G141.

7. Test Specimens

7.1 Exposure test specimens may be of any size or shape that can be mounted in a holder or applied directly to the racks. They may be specimens suited to the means of evaluating the effects of weathering on a specific physical property, or they may be larger specimens from which smaller specimens for evaluation may be cut. Exposure test specimens should be

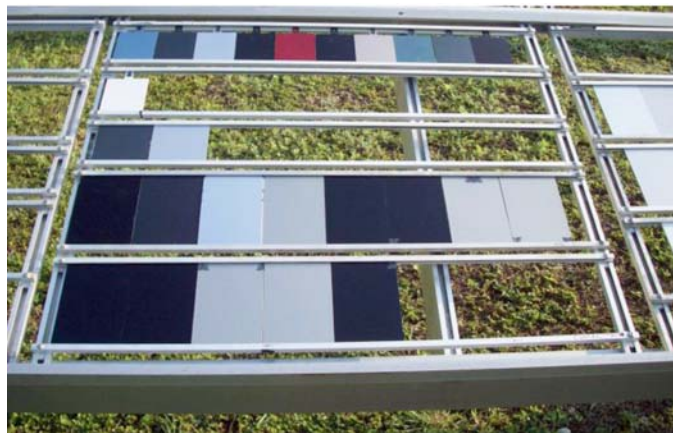


FIG. 1 Suitably Mounted Specimens in a Frame