



**SLOVENSKI STANDARD**  
**SIST EN 300 958 V7.0.1:2003**  
**01-december-2003**

---

8 [[ [HJb]`W] b]`h`Y`\_ca i b]\_UW`g\_]`g]ghYa `fZ`hU&ZL`E`8`cdc`b]`bU`g]rcf]Hj] .  
bYXj ci a bUdfYXUU\_]WJf07HL`E`g]rcdb`U' `f] GA `\$( "-`%Z`f`U`h] ]WJ+`\$`%Z]nXUU%- , Ł

Digital cellular telecommunications system (Phase 2+) (GSM); Explicit Call Transfer (ECT) supplementary service; Stage 3 (GSM 04.91 version 7.0.1 Release 1998)

**iteh STANDARD PREVIEW**  
**(standards.iteh.ai)**

Ta slovenski standard je istoveten z: **EN 300 958 Version 7.0.1**  
<https://standards.iteh.ai/catalog/standards/sist/281dd21e-2895-4039-b043-f7f36c619aed/sist-en-300-958-v7-0-1-2003>

**ICS:**

33.070.50	Globalni sistem za mobilno telekomunikacijo (GSM)	Global System for Mobile Communication (GSM)
-----------	---	--

**SIST EN 300 958 V7.0.1:2003**                      **en**

**iTeh STANDARD PREVIEW**  
**(standards.iteh.ai)**

[SIST EN 300 958 V7.0.1:2003](https://standards.iteh.ai/catalog/standards/sist/281dd21e-2895-4039-b043-f7f36c619aed/sist-en-300-958-v7-0-1-2003)

<https://standards.iteh.ai/catalog/standards/sist/281dd21e-2895-4039-b043-f7f36c619aed/sist-en-300-958-v7-0-1-2003>

# ETSI EN 300 958 V7.0.1 (2000-01)

*European Standard (Telecommunications series)*

**Digital cellular telecommunications system (Phase 2+);  
Explicit Call Transfer (ECT) supplementary service;  
Stage 3  
(GSM 04.91 version 7.0.1 Release 1998)**

iTeh STANDARD PREVIEW  
(standards.iteh.ai)

**GSM**®  
GLOBAL SYSTEM FOR  
MOBILE COMMUNICATIONS

[SIST EN 300 958 V7.0.1:2003](https://standards.iteh.ai/catalog/standards/sist/281dd21e-2895-4039-b043-f7f36c619aed/sist-en-300-958-v7-0-1-2003)

<https://standards.iteh.ai/catalog/standards/sist/281dd21e-2895-4039-b043-f7f36c619aed/sist-en-300-958-v7-0-1-2003>



---

**Reference**

REN/SMG-030491Q7

---

**Keywords**Digital cellular telecommunications system,  
Global System for Mobile communications (GSM)**ETSI**

---

**Postal address**

F-06921 Sophia Antipolis Cedex - FRANCE

---

**Office address**650 Route des Lucioles - Sophia Antipolis  
Valbonne - FRANCE

Tel.: +33 4 92 94 42 00 Fax: +33 4 93 65 47 16

Siret N° 348 623 562 00017 NAF 742 C

Association à but non lucratif enregistrée à la  
Sous-Prefecture de Grasse (06) N° 7803/88

---

**Internet**

secretariat@etsi.fr

Individual copies of this ETSI deliverable  
can be downloaded from<http://www.etsi.org>If you find errors in the present document, send your  
comment to: editor@etsi.fr

---

**Important notice**

This ETSI deliverable may be made available in more than one electronic version or in print. In any case of existing or perceived difference in contents between such versions, the reference version is the Portable Document Format (PDF).

In case of dispute, the reference shall be the printing on ETSI printers of the PDF version kept on a specific network drive within ETSI Secretariat.

---

**Copyright Notification**

No part may be reproduced except as authorized by written permission.  
The copyright and the foregoing restriction extend to reproduction in all media.

© European Telecommunications Standards Institute 2000.  
All rights reserved.

---

# Contents

Intellectual Property Rights .....	4
Foreword.....	4
1 Scope .....	5
2 References .....	5
3 Abbreviations .....	7
4 Explicit Call Transfer (ECT) .....	7
4.1 Normal operation.....	7
4.2 Explicit Call Transfer invocation.....	7
4.3 Notification to the remote parties .....	8
4.3.1 Notification to the held remote party .....	8
4.3.2 Notification to the active or alerting remote party .....	9
4.4 Activation and deactivation .....	9
4.5 Registration, erasure and interrogation.....	9
5 Support by "old" MSs .....	9
5.1 Explicit Call Transfer invocation.....	10
5.2 Notification to the remote parties .....	10
<b>Annex A (informative): Change Request History .....</b>	<b>11</b>
History .....	12

**iTeh STANDARD PREVIEW**  
(standards.iteh.ai)

[SIST EN 300 958 V7.0.1:2003](https://standards.iteh.ai/catalog/standards/sist/281dd21e-2895-4039-b043-f7f36c619aed/sist-en-300-958-v7-0-1-2003)

<https://standards.iteh.ai/catalog/standards/sist/281dd21e-2895-4039-b043-f7f36c619aed/sist-en-300-958-v7-0-1-2003>

## Intellectual Property Rights

IPRs essential or potentially essential to the present document may have been declared to ETSI. The information pertaining to these essential IPRs, if any, is publicly available for **ETSI members and non-members**, and can be found in SR 000 314: "*Intellectual Property Rights (IPRs); Essential, or potentially Essential, IPRs notified to ETSI in respect of ETSI standards*", which is available from the ETSI Secretariat. Latest updates are available on the ETSI Web server (<http://www.etsi.org/ipr>).

Pursuant to the ETSI IPR Policy, no investigation, including IPR searches, has been carried out by ETSI. No guarantee can be given as to the existence of other IPRs not referenced in SR 000 314 (or the updates on the ETSI Web server) which are, or may be, or may become, essential to the present document.

## Foreword

This European Standard (Telecommunications series) has been produced by the Special Mobile Group (SMG).

The present document specifies the procedures used at the radio interface for normal operation, registration, erasure, activation, deactivation, invocation and interrogation of call transfer supplementary services within the digital cellular telecommunications system.

The specification from which the present document has been derived was originally based on CEPT documentation, hence the presentation of the present document may not be entirely in accordance with the ETSI/PNE rules.

The contents of the present document is subject to continuing work within SMG and may change following formal SMG approval. Should SMG modify the contents of the present document it will be re-released with an identifying change of release date and an increase in version number as follows:

Version 7.x.y

where:

- 7 indicates Release 1998 of GSM Phase 2+.
- x the second digit is incremented for all changes of substance, i.e. technical enhancements, corrections, updates, etc.
- y the third digit is incremented when editorial only changes have been incorporated in the specification.

### National transposition dates

Date of adoption of this EN:	31 December 1999
Date of latest announcement of this EN (doa):	31 March 2000
Date of latest publication of new National Standard or endorsement of this EN (dop/e):	30 September 2000
Date of withdrawal of any conflicting National Standard (dow):	30 September 2000

# 1 Scope

The present document gives the stage 3 description of the call transfer supplementary services.

The present document specifies the procedures used at the radio interface (Reference point Um as defined in GSM 04.02) for normal operation, registration, erasure, activation, deactivation, invocation and interrogation of call transfer supplementary services. Provision and withdrawal of supplementary services is an administrative matter between the mobile subscriber and the service provider and cause no signalling on the radio interface.

In GSM 04.10 the general aspects of the specification of supplementary services at the layer 3 radio interface are given.

GSM 04.80 specifies the formats and coding for the supplementary services.

Definitions and descriptions of supplementary services are given in GSM 02.04, GSM 02.8x and GSM 02.9x-series. GSM 02.91 is related specifically to call transfer supplementary services.

The technical realization of supplementary services is described in GSM 03.11, GSM 03.8x and GSM 03.9x-series. GSM 03.91 is related specifically to call transfer supplementary services.

The procedures for Call Control, Mobility Management and Radio Resource management at the layer 3 radio interface are defined in GSM 04.07 and GSM 04.08.

The following supplementary services belong to the call transfer supplementary services and are described in the present document:

- Explicit Call Transfer (ECT) (see clause 4).

**iTeh STANDARD PREVIEW**

# 2 References (standards.iteh.ai)

The following documents contain provisions which, through reference in this text, constitute provisions of the present document.

[https://standards.iteh.ai/catalog/standards/sist/281dd21e-2895-4039-](https://standards.iteh.ai/catalog/standards/sist/281dd21e-2895-4039-b043-f786c619aed/sist-en-300-958-v7-0-1-2003)

[b043-f786c619aed/sist-en-300-958-v7-0-1-2003](https://standards.iteh.ai/catalog/standards/sist-en-300-958-v7-0-1-2003)

- References are either specific (identified by date of publication, edition number, version number, etc.) or non-specific.
- For a specific reference, subsequent revisions do not apply.
- For a non-specific reference, the latest version applies.
- A non-specific reference to an ETS shall also be taken to refer to later versions published as an EN with the same number.
- For this Release 1998 document, references to GSM documents are for Release 1998 versions (version 7.x.y).

- [1] GSM 01.04: "Digital cellular telecommunications system (Phase 2+); Abbreviations and acronyms".
- [2] GSM 02.04: "Digital cellular telecommunications system (Phase 2+); General on supplementary services".
- [3] GSM 02.30: "Digital cellular telecommunications system (Phase 2+); Man-Machine Interface (MMI) of the Mobile Station (MS)".
- [4] GSM 02.81: "Digital cellular telecommunications system (Phase 2+); Line identification supplementary services - Stage 1".
- [5] GSM 02.82: "Digital cellular telecommunications system (Phase 2+); Call Forwarding (CF) supplementary services - Stage 1".
- [6] GSM 02.83: "Digital cellular telecommunications system (Phase 2+); Call Waiting (CW) and Call Hold (HOLD) supplementary services - Stage 1".

- [7] GSM 02.84: "Digital cellular telecommunications system (Phase 2+); MultiParty (MPY) supplementary services - Stage 1".
- [8] GSM 02.85: "Digital cellular telecommunications system (Phase 2+); Closed User Group (CUG) supplementary services - Stage 1".
- [9] GSM 02.86: "Digital cellular telecommunications system (Phase 2+); Advice of Charge (AoC) Supplementary Services - Stage 1".
- [10] GSM 02.88: "Digital cellular telecommunications system (Phase 2+); Call Barring (CB) supplementary services - Stage 1".
- [11] GSM 02.90: "Digital cellular telecommunications system (Phase 2+); Unstructured Supplementary Service Data (USSD) - Stage 1".
- [12] GSM 02.91: "Digital cellular telecommunications system (Phase 2+); Explicit Call Transfer (ECT)".
- [13] GSM 03.11: "Digital cellular telecommunications system (Phase 2+); Technical realization of supplementary services".
- [14] GSM 03.81: "Digital cellular telecommunications system (Phase 2+); Line identification supplementary services - Stage 2".
- [15] GSM 03.82: "Digital cellular telecommunications system (Phase 2+); Call Forwarding (CF) supplementary services - Stage 2".
- [16] GSM 03.83: "Digital cellular telecommunications system (Phase 2+); Call Waiting (CW) and Call Hold (HOLD) supplementary services - Stage 2".
- [17] GSM 03.84: "Digital cellular telecommunications system (Phase 2+); MultiParty (MPY) supplementary services - Stage 2".
- [18] GSM 03.85: "Digital cellular telecommunications system (Phase 2+); Closed User Group (CUG) supplementary services - Stage 2".
- [19] GSM 03.86: "Digital cellular telecommunications system (Phase 2+); Advice of Charge (AoC) supplementary services - Stage 2".
- [20] GSM 03.88: "Digital cellular telecommunications system (Phase 2+); Call Barring (CB) supplementary services - Stage 2".
- [21] GSM 03.90: "Digital cellular telecommunications system (Phase 2+); Unstructured supplementary services operation - Stage 2".
- [22] GSM 03.91: "Digital cellular telecommunications system (Phase 2+); Explicit Call Transfer (ECT) supplementary service - Stage 2".
- [23] GSM 04.02: "Digital cellular telecommunications system (Phase 2+); GSM Public Land Mobile Network (PLMN) access reference configuration".
- [24] GSM 04.07: "Digital cellular telecommunications system (Phase 2+); Mobile radio interface signalling layer 3; General aspects".
- [25] GSM 04.08: "Digital cellular telecommunications system (Phase 2+); Mobile radio interface layer 3 specification".
- [26] GSM 04.10: "Digital cellular telecommunications system (Phase 2+); Mobile radio interface layer 3; Supplementary services specification; General aspects".
- [27] GSM 04.80: "Digital cellular telecommunications system (Phase 2+); Mobile radio interface layer 3 supplementary services specification; Formats and coding".



## 3 Abbreviations

The abbreviations used in the present document are listed in GSM 01.04.

## 4 Explicit Call Transfer (ECT)

### 4.1 Normal operation

The Explicit Call Transfer (ECT) function should be invoked in association with two existing calls which one is answered and in the held state and the other is answered and active or alerting.

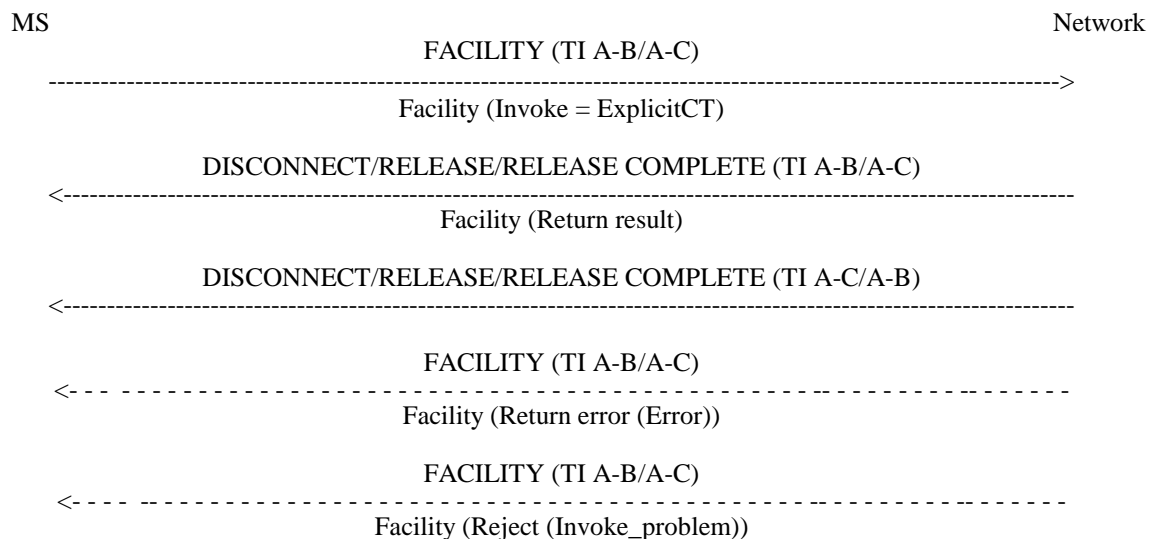
The Mobile Station (MS) invokes the service by sending a FACILITY message to the network containing the ECT request (ECT request). This ECT request indicates to the network that the mobile subscriber wishes the two calls to be connected together. The MS shall not change the basic call state or the auxiliary state of either call when sending ECT request.

The network will normally accept the ECT request and connect the two calls, indicates the success of the ECT request to the served subscriber and disconnect afterwards the served mobile subscriber from both calls (see figure 1).

If the ECT request is not accepted, the network will indicate the error to the served subscriber (see figure 1) and leaves the two calls to the condition it was in prior to the ECT request. The network confirms with the same transaction identifier. The detailed coding of the different error values are specified in GSM 04.80. Which error value is used in which error case is described below.

During the ECT operation the MS shall run a timer  $T_{ECT}$ . This timer is started when the operation is sent, and stopped when a response is received from the network. If this timer expires the MS shall assume that the operation has failed, locally release the invokeID, and may re-attempt the operation or inform the user of the failure.

### 4.2 Explicit Call Transfer invocation



NOTE: A-B/A-C indicates a choice. The Transaction Identifier (TI) used for the invocation of ECT shall be that of the active/answered call or of the held call.  
A-C/A-B indicates the TI of the other call.

Figure 1: Invocation of Explicit Call Transfer