



Standard Specification for Construction of Fire and Foam Station Cabinets¹

This standard is issued under the fixed designation F1333; the number immediately following the designation indicates the year of original adoption or, in the case of revision, the year of last revision. A number in parentheses indicates the year of last reapproval. A superscript epsilon (ϵ) indicates an editorial change since the last revision or reapproval.

1. Scope

1.1 This specification provides design and construction criteria for double and single fire and foam station cabinets. See Fig. 1 and Fig. 2. Valves, hose, and fittings are not included.

1.2 Optional back and legs may be provided.

1.3 The values stated in inch-pound units are to be regarded as the standard. The values in parentheses are for information only.

1.4 *This international standard was developed in accordance with internationally recognized principles on standardization established in the Decision on Principles for the Development of International Standards, Guides and Recommendations issued by the World Trade Organization Technical Barriers to Trade (TBT) Committee.*

2. Referenced Documents

2.1 *ASTM Standards:*²

[A36/A36M](#) Specification for Carbon Structural Steel

[A53/A53M](#) Specification for Pipe, Steel, Black and Hot-Dipped, Zinc-Coated, Welded and Seamless

[A161](#) Specification for Stainless and Heat-Resisting Chromium-Nickel Steel Plate, Sheet, and Strip

[A312/A312M](#) Specification for Seamless, Welded, and Heavily Cold Worked Austenitic Stainless Steel Pipes

[A569/A569M](#) Specification for Steel, Carbon (0.15 Maximum, Percent), Hot-Rolled Sheet and Strip Commercial (Withdrawn 2000)³

[B209](#) Specification for Aluminum and Aluminum-Alloy Sheet and Plate

[B221](#) Specification for Aluminum and Aluminum-Alloy Extruded Bars, Rods, Wire, Profiles, and Tubes

[F593](#) Specification for Stainless Steel Bolts, Hex Cap Screws, and Studs

[F594](#) Specification for Stainless Steel Nuts

[F783](#) Specification for Staple, Handgrab, Handle, and Stirrup Rung

2.2 *American National Standards:*⁴

[ANSI B18.21.1](#) Lock Washer

[ANSI B18.22.1](#) Plain Washer

2.3 *Other Standards:*

[American Bureau of Shipping Rules for Building and Classing of Steel Vessels](#)⁵

[American Welding Society Publication, AWS D 1.1 Structural Welding Code](#)⁶

3. Classification

3.1 *Type I, Single Cabinet* (see Fig. 1 and Figs. 3-9):

3.1.1 *Grade 1*—Right-hand door active leaf.

3.1.1.1 *Class A, Mild Steel*—Specification [A36/A36M](#).

3.1.1.2 *Class B, Stainless Steel*—Specification [A167](#).

3.1.1.3 *Class C, Aluminum*—Specification [B209](#).

3.1.2 *Grade 2*—Left-hand door.

3.1.2.1 *Class A, Mild Steel*—Specification [A36/A36M](#).

3.1.2.2 *Class B, Stainless Steel*—Specification [A167](#).

3.1.2.3 *Class C, Aluminum*—Specification [B209](#).

3.2 *Type II, Double Cabinet* (see Fig. 2 and Fig. 8):

3.2.1 *Grade 1*—Right-hand doors active leaf.

3.2.1.1 *Class A, Mild Steel*—Specification [A36/A36M](#).

3.2.1.2 *Class B, Stainless Steel*—Specification [A167](#).

3.2.1.3 *Class C, Aluminum*—Specification [B209](#).

4. Ordering Information

4.1 Fire and foam cabinets ordered in accordance with this specification shall include the following:

4.1.1 ASTM title, designation, and year of issue,

4.1.2 Quantity (number of cabinets),

4.1.3 Type, grade, and class, and

4.1.4 Optional features.

¹ This specification is under the jurisdiction of ASTM Committee F25 on Ships and Marine Technology and is the direct responsibility of Subcommittee F25.11 on Machinery and Piping Systems.

Current edition approved Oct. 1, 2013. Published October 2013. Originally approved in 1991. Last previous edition approved in 2007 as F1333 – 91 (2007). DOI: 10.1520/F1333-91R13.

² For referenced ASTM standards, visit the ASTM website, www.astm.org, or contact ASTM Customer Service at service@astm.org. For *Annual Book of ASTM Standards* volume information, refer to the standard's Document Summary page on the ASTM website.

³ The last approved version of this historical standard is referenced on www.astm.org.

⁴ Available from American National Standards Institute (ANSI), 25 W. 43rd St., 4th Floor, New York, NY 10036, <http://www.ansi.org>.

⁵ Available from American Bureau of Shipping (ABS), ABS Plaza, 16855 Northchase Dr., Houston, TX 77060, <http://www.eagle.org>.

⁶ Available from American Welding Society (AWS), 8669 NW 36 St., #130, Miami, FL 33166-6672, <http://www.aws.org>.

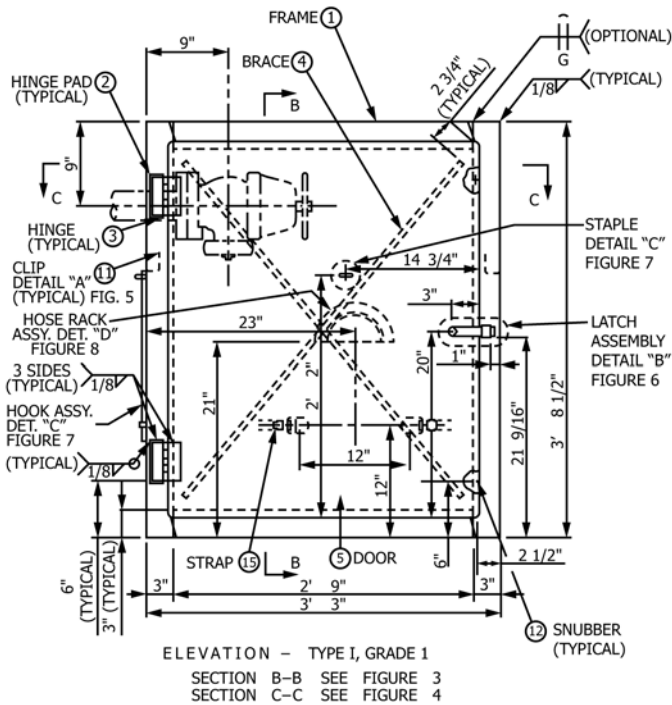


FIG. 1 Fire and Foam Cabinet—Type I

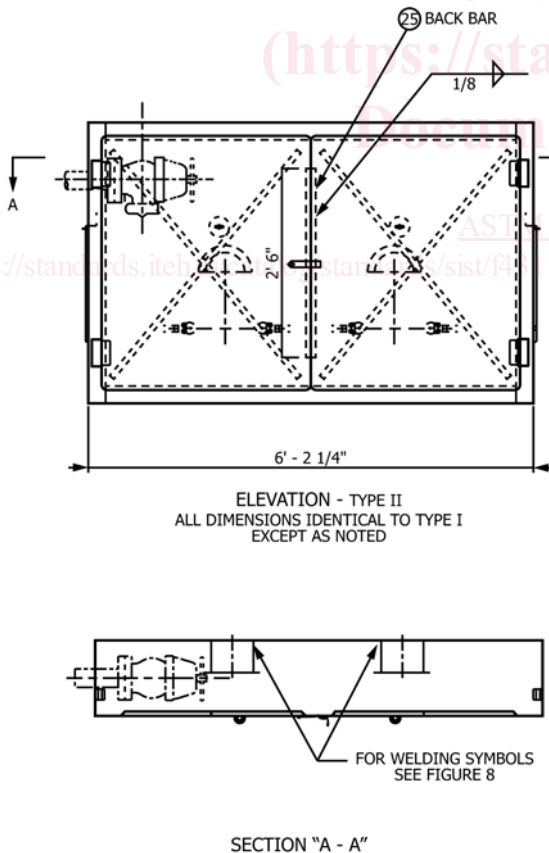


FIG. 2 Fire and Foam Cabinet—Type II

Item Number ^A	Description ^B
1 Frame	plate, 12 gage
2 Hinge pad	flat bar, 1 1/2 in. by 4 1/2 in. by 12 gage
3 Hinge	undrilled butt, 4 in. long by 2 in. wide, commercial stainless steel
4 Brace	angle, 3/4 by 3/4 by 1/8 in.
5 Door	plate, 12 gage
6 Staple	round bar, 3/8-in. dimensions in accordance with Specification F783
7 Hook	round bar, 1/4 in.
8 Latch	flat bar, 3/16 by 1 in.
9 Keeper	flat bar, 3/4 by 1 in.
10 Rivet	button monel or aluminum, 1/4 in.
11 Clip	wrench/nozzle, plate 12 gage
12 Snubber	rubber, commercial
13 Retainer	plate, 12 gage
14 Saddle	pipe 6 NPS Schedule 40, Specification A53/A53M
15 Strap	hose securing, quick disconnect, commercial
16 Clip	hook securing, commercial, Specification A167
17 Washer	TFE-fluorocarbon
Options	
18 Back	plate, 3/16 in.
19 Leg	angle, 4 by 3 by 3/8 in., Specification A36/A36M
20 Brace	angle, 4 by 3 by 3/8 in., Specification A36/A36M
21 Bolt	hex head, 3/8 —16 UNC—2A by 1 1/4-in. long, stainless steel Type 316, Specification F593
22 Washer	flat, stainless steel Type 316 for 3/8-in. diameter bolt, ANSI B18.22.1, Type B
23 Nut	heavy hex 3/8 —16 UNC—2B, stainless steel Type 316, Specification F594
24 Washer	lock, stainless steel Type 316 for 3/8-in. diameter bolt, ANSI B18.21.1 A36/A36M, Regular
25 Back bar	Type II Double Cabinet Only flat bar, 1 1/2 in. by 30 in. by 12 gage

^A Items 18 to 24 (inclusive) are optional.

^B 1 in. = 25.4 mm.

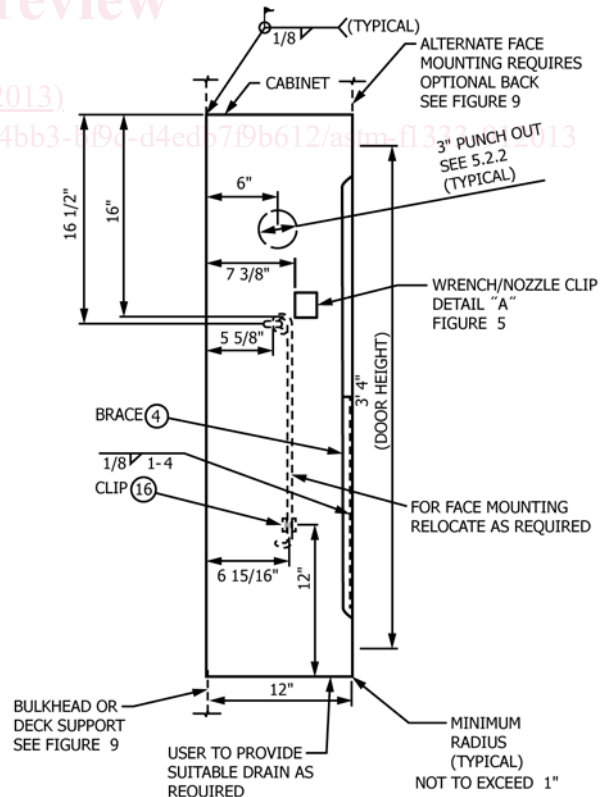


FIG. 3 Section "B-B"