



International
Standard

ISO 4064-4

**Water meters for cold potable water
and hot water —**

Part 4:

**Non-metrological requirements not
covered in ISO 4064-1**

Compteurs d'eau potable froide et d'eau chaude —

*Partie 4: Exigences non métrologiques non couvertes par
l'ISO 4064-1*

[ISO 4064-4:2024](https://standards.iteh.ai/catalog/standards/iso/d49e4933-630a-43e3-a218-9c541e0d728e/iso-4064-4-2024)

<https://standards.iteh.ai/catalog/standards/iso/d49e4933-630a-43e3-a218-9c541e0d728e/iso-4064-4-2024>

**Second edition
2024-12**

iTeh Standards
(<https://standards.iteh.ai>)
Document Preview

[ISO 4064-4:2024](https://standards.iteh.ai/catalog/standards/iso/d49e4933-630a-43e3-a218-9c541e0d728e/iso-4064-4-2024)

<https://standards.iteh.ai/catalog/standards/iso/d49e4933-630a-43e3-a218-9c541e0d728e/iso-4064-4-2024>



COPYRIGHT PROTECTED DOCUMENT

© ISO 2024

All rights reserved. Unless otherwise specified, or required in the context of its implementation, no part of this publication may be reproduced or utilized otherwise in any form or by any means, electronic or mechanical, including photocopying, or posting on the internet or an intranet, without prior written permission. Permission can be requested from either ISO at the address below or ISO's member body in the country of the requester.

ISO copyright office
CP 401 • Ch. de Blandonnet 8
CH-1214 Vernier, Geneva
Phone: +41 22 749 01 11
Email: copyright@iso.org
Website: www.iso.org

Published in Switzerland

Contents

Page

Foreword	iv
1 Scope	1
2 Normative references	1
3 Terms and definitions	1
4 Technical characteristics	2
4.1 In-line meters.....	2
4.1.1 Meter size and overall dimensions.....	2
4.1.2 Threaded connection.....	2
4.1.3 Flanged connection.....	2
4.1.4 Combination meter connection.....	3
4.2 Concentric and cartridge meters and exchangeable metrological modules.....	4
4.2.1 Meter size and overall dimensions.....	4
4.2.2 Design of the meter manifold connection.....	4
4.2.3 Dimensions of concentric and cartridge meters.....	4
4.2.4 Dimensions of exchangeable metrological modules.....	5
Annex A (informative) Concentric water meter manifold	11
Annex B (informative) Connection interfaces — Solutions for cartridge meters	14
Annex C (informative) Examples of adaptors and converters	26
Bibliography	28

iTech Standards
 (https://standards.iteh.ai)
 Document Preview

[ISO 4064-4:2024](https://standards.iteh.ai/catalog/standards/iso/d49e4933-630a-43e3-a218-9c541e0d728e/iso-4064-4-2024)

<https://standards.iteh.ai/catalog/standards/iso/d49e4933-630a-43e3-a218-9c541e0d728e/iso-4064-4-2024>

Foreword

ISO (the International Organization for Standardization) is a worldwide federation of national standards bodies (ISO member bodies). The work of preparing International Standards is normally carried out through ISO technical committees. Each member body interested in a subject for which a technical committee has been established has the right to be represented on that committee. International organizations, governmental and non-governmental, in liaison with ISO, also take part in the work. ISO collaborates closely with the International Electrotechnical Commission (IEC) on all matters of electrotechnical standardization.

The procedures used to develop this document and those intended for its further maintenance are described in the ISO/IEC Directives, Part 1. In particular, the different approval criteria needed for the different types of ISO document should be noted. This document was drafted in accordance with the editorial rules of the ISO/IEC Directives, Part 2 (see www.iso.org/directives).

ISO draws attention to the possibility that the implementation of this document may involve the use of (a) patent(s). ISO takes no position concerning the evidence, validity or applicability of any claimed patent rights in respect thereof. As of the date of publication of this document, ISO had not received notice of (a) patent(s) which may be required to implement this document. However, implementers are cautioned that this may not represent the latest information, which may be obtained from the patent database available at www.iso.org/patents. ISO shall not be held responsible for identifying any or all such patent rights.

Any trade name used in this document is information given for the convenience of users and does not constitute an endorsement.

For an explanation of the voluntary nature of standards, the meaning of ISO specific terms and expressions related to conformity assessment, as well as information about ISO's adherence to the World Trade Organization (WTO) principles in the Technical Barriers to Trade (TBT), see www.iso.org/iso/foreword.html.

This document was prepared by Technical Committee ISO/TC 30, *Measurement of fluid flow in closed conduits*, Subcommittee SC 7, *Volume methods including water meters* and OIML Technical Subcommittee TC 8/SC 5, *Water meters*, in collaboration with the European Committee for Standardization (CEN) Technical Committee CEN/TC 92, *Water meters*, in accordance with the Agreement on technical cooperation between ISO and CEN (Vienna Agreement).

This second edition of ISO 4064-4 cancels and replaces the first edition (ISO 4064-4:2014), which has been technically revised. [h.ai/catalog/standards/iso/d49e4933-630a-43e3-a218-9c541e0d728e/iso-4064-4-2024](https://www.iso.org/standards/iso/d49e4933-630a-43e3-a218-9c541e0d728e/iso-4064-4-2024)

The main changes are as follows:

- editorial and technical changes were done throughout the document.

A list of all parts in the ISO 4064 series can be found on the ISO website.

Any feedback or questions on this document should be directed to the user's national standards body. A complete listing of these bodies can be found at www.iso.org/members.html.

Water meters for cold potable water and hot water —

Part 4:

Non-metrological requirements not covered in ISO 4064-1

1 Scope

This document applies to water meters used to meter the volume of cold potable water and hot water flowing through a fully charged, closed conduit. These water meters incorporate devices which indicate the integrated volume.

This document specifies technical characteristics and pressure loss requirements for meters for cold potable water and hot water. It applies to water meters which can withstand:

- a) a maximum admissible pressure (MAP) equal to at least 1 MPa¹⁾ [0,6 MPa for meters for use with pipe nominal diameters (DNs) ≥ 500 mm];
- b) a maximum admissible temperature (MAT) for cold potable water meters of 30 °C;
- c) a MAT for hot water meters of up to 180 °C, depending on class.

In addition to meters based on mechanical principles, this document also applies to water meters based on electrical or electronic principles, and to water meters based on mechanical principles incorporating electronic devices, used to meter the volume flow of hot water and cold potable water. It also applies to electronic ancillary devices. As a rule ancillary devices are optional. However, national or international regulations may make some ancillary devices mandatory in relation to the utilization of the water meter.

2 Normative references

[ISO 4064-4:2024](https://standards.iteh.ai/catalog/standards/iso/d49e4933-630a-43e3-a218-9c541e0d728e/iso-4064-4-2024)

<https://standards.iteh.ai/catalog/standards/iso/d49e4933-630a-43e3-a218-9c541e0d728e/iso-4064-4-2024>

The following documents are referred to in the text in such a way that some or all of their content constitutes requirements of this document. For dated references, only the edition cited applies. For undated references, the latest edition of the referenced document (including any amendments) applies.

ISO 228-1, *Pipe threads where pressure-tight joints are not made on the threads — Part 1: Dimensions, tolerances and designation*

ISO 4064-1|OIML R 49-1, *Water meters for cold potable water and hot water — Part 1: Metrological and technical requirements*

ISO 7005-2, *Metallic flanges — Part 2: Cast iron flanges*

ISO 7005-3, *Metallic flanges — Part 3: Copper alloy and composite flanges*

3 Terms and definitions

For the purposes of this document, the terms and definitions given in ISO 4064-1|OIML R 49-1 apply.

NOTE Many of the definitions used in this document conform to ISO/IEC Guide 99|OIML V 2-200^[2], OIML V 1^[3] and OIML D 11^[4].

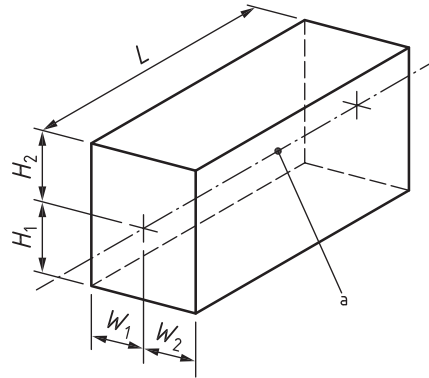
1) 1 MPa = 10 bar (1 bar = 0,1 MPa = 10^5 Pa; 1 MPa = 1 N/mm²).

4 Technical characteristics

4.1 In-line meters

4.1.1 Meter size and overall dimensions

Meter size is characterized either by the thread size of the end connections or by the nominal size of the flange. For each meter size, there is a corresponding fixed set of overall dimensions. The dimensions of the meter, as illustrated in [Figure 1](#), shall be in accordance with [Table 1](#).



Key

W_1, W_2 $W_1 + W_2$ is the width of a cuboid within which the water meter can be contained

H_1, H_2 $H_1 + H_2$ is the height of a cuboid within which the water meter can be contained

L length of a cuboid within which the water meter can be contained

NOTE The cover is at right angles to its closed position. Dimensions H_1, H_2, W_1 and W_2 are maxima; L is a fixed value with specified tolerances.

a Pipe axis.

Figure 1 — Meter size and overall dimensions

ISO 4064-4:2024

<https://standards.iteh.ai/catalog/standards/iso/d49e4933-630a-43e3-a218-9c541e0d728e/iso-4064-4-2024>

4.1.2 Threaded connection

Permissible values of dimensions a and b for threaded connections are given in [Table 1](#). Threads shall conform to ISO 228-1. [Figure 2](#) defines dimensions a and b .

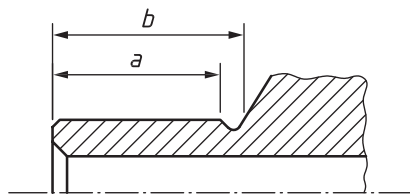


Figure 2 — Threaded connection

4.1.3 Flanged connection

Flanged end connections shall conform to ISO 7005-2 and ISO 7005-3 for the maximum pressure corresponding to that of the water meter. Dimensions shall be as given in [Table 1](#).

The manufacturer shall provide a reasonable clearance behind the rear face of the flange to allow access for installation and removal.

Table 1 — Water meter dimensions for threaded and flanged connections

Dimensions in millimetres

DN ^a size	a_{\min}	b_{\min}	Preferred values of L^b	Alternative values of L^b	W_1, W_2	H_1	H_2
15	10 ^c	12 ^c	165	80, 85, 100, 105, 110, 114, 115, 130, 134, 135, 145, 170, 175, 180, 190, 200, 220	65	60	220
20	12	14	190	105, 110, 115, 130, 134, 135, 165, 175, 195, 200, 220, 229	65	60	240
25	12	16	260	110, 150, 175, 199, 200, 210, 225, 273	100	65	260
32	13	18	260	110, 150, 175, 199, 200, 230, 270, 300, 321	110	70	280
40	13	20	300	200, 220, 245, 260, 270, 387	120	75	300
50	13	20	200	170, 245, 250, 254, 270, 275, 300, 345, 350	135	216	390
65	14	22	200	170, 270, 300, 450	150	130	390
80	n.a.	n.a.	200	190, 225, 300, 305, 350, 425, 500	180	343	410
100	n.a.	n.a.	250	210, 280, 350, 356, 360, 375, 450, 650	225	356	440
125	n.a.	n.a.	250	220, 275, 300, 350, 375, 450	135	140	440
150	n.a.	n.a.	300	230, 325, 350, 450, 457, 500, 560	267	394	500
200	n.a.	n.a.	350	260, 400, 500, 508, 550, 600, 620	349	406	500
250	n.a.	n.a.	450	330, 400, 600, 660, 800	368	521	500
300	n.a.	n.a.	500	380, 400, 800	394	533	533
350	n.a.	n.a.	500	420, 800	270	300	500
400	n.a.	n.a.	600	500, 550, 800	290	320	500
500	n.a.	n.a.	600	500, 625, 680, 770, 800, 900, 1 000	365	380	520
600	n.a.	n.a.	800	500, 750, 820, 920, 1 000, 1 200	390	450	600
800	n.a.	n.a.	1 200	600	510	550	700
>800	n.a.	n.a.	1,25× DN	DN	0,65× DN	0,65× DN	0,75× DN

^a Nominal size of flanges and threaded connections.

^b Tolerance on length: DN 15 to 40 — L_{-2}^0 ; DN 50 to 300 — L_{-3}^0 ; DN 350 to 400 — L_{-5}^0 . Tolerances on lengths of meters greater than DN 400 should be agreed between the user and manufacturer.

^c For DN 15 meters of length 80 mm or 85 mm, $a_{\min} = b_{\min} = 7,5$ mm.

4.1.4 Combination meter connection

Dimensions shall be as set out in [Table 2](#).

The overall length of a combination meter may be a fixed dimension or may be adjustable by means of a sliding coupling. In this case, the minimum possible adjustment of the meter overall length shall be 15 mm relative to the nominal value of L defined in [Table 2](#).

Because of the wide variation in the height of the various types of combination meters, this dimension is not standardized.

Table 2 — Combination water meter with flanged end connections

Dimensions in millimetres

DN ^a size	Preferred values of <i>L</i>	Alternative values of <i>L</i>	<i>W</i> ₁ , <i>W</i> ₂
50	300	270, 432, 560, 600	220
65	300	650	240
80	350	300, 432, 630, 700	260
100	350	360, 610, 750, 800	350
125	350	850	350
150	500	610, 1 000	400
200	500	1 160, 1 200	400

^a Nominal size of flange connection.

4.2 Concentric and cartridge meters and exchangeable metrological modules

NOTE 1 This subclause contains the necessary information on meter size and overall dimensions. Two meter manifold connection designs are shown in [Annex A](#) and solutions for cartridge meters are shown in [Annex B](#). Examples of adaptors and converters are shown in [Annex C](#).

NOTE 2 It is possible that this subclause and [Annex A](#) will be subject to change as concentric water meter and manifold designs evolve.

4.2.1 Meter size and overall dimensions

Dimensions for a current meter design are shown in [Figure 3](#) and [Table 3](#).

4.2.2 Design of the meter manifold connection

The meter connection shall be designed to connect the meter, using the screw thread provided, to a manifold having this design of face. Suitable seals shall ensure that no leaks occur between the inlet connection and the meter/manifold exterior or between the inlet and outlet passages at the meter/manifold interface.

4.2.3 Dimensions of concentric and cartridge meters

4.2.3.1 General

Dimensions for concentric and cartridge meters are defined by a cylinder into which the meter fits — see [Figure 3](#), in which *J* and *K* define respectively the height and diameter of a cylinder enclosing the meter.

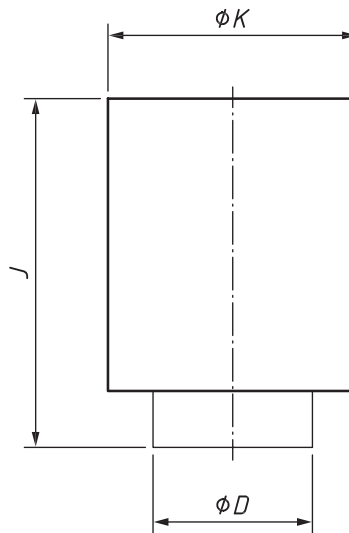


Figure 3 — Concentric and cartridge meter dimensions

Where there is a separate indicating device or calculator, the overall size specified in Figure 3 applies only to the housing of the measurement transducer.

4.2.3.2 Concentric meters

Dimensions for concentric meters are specified in Table 3.

Table 3 — Concentric meter dimensions

Dimensions in millimetres

Type	Maximum ϕD	Maximum J	Maximum ϕK
1	(G 1½ B) ^a	220	110
2	(G 2 B) ^a	220	135

^a Whitworth threading.

4.2.3.3 Dimensions of cartridge meters

Dimensions for cartridge meters are specified in Table 4.

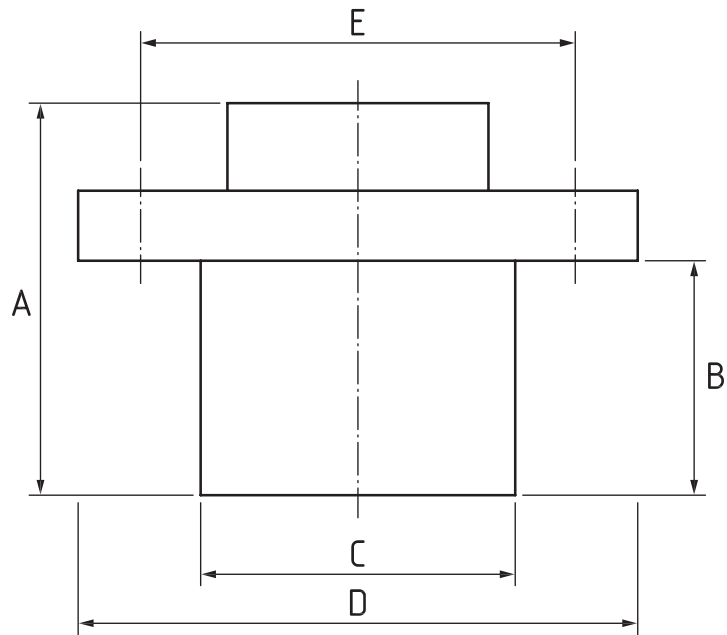
Table 4 — Cartridge meter dimensions

Dimensions in millimetres

Maximum ϕD	Maximum J	Maximum ϕK
90	200	150

4.2.4 Dimensions of exchangeable metrological modules

The dimensions of exchangeable metrological modules in meters with horizontal or vertical flow patterns (WP or WS) shall be in accordance with Figure 4 and Table 5 and Table 6.



Key

A, B, C, D, E see [Table 5](#) and [Table 6](#)

**Figure 4 — Dimensions of exchangeable metrological modules —
Meters with horizontal or vertical flow pattern (WP or WS)**

**Table 5 — Exchangeable metrological modules: dimensions —
Meters with horizontal flow pattern (WP)**

Dimensions in millimetres

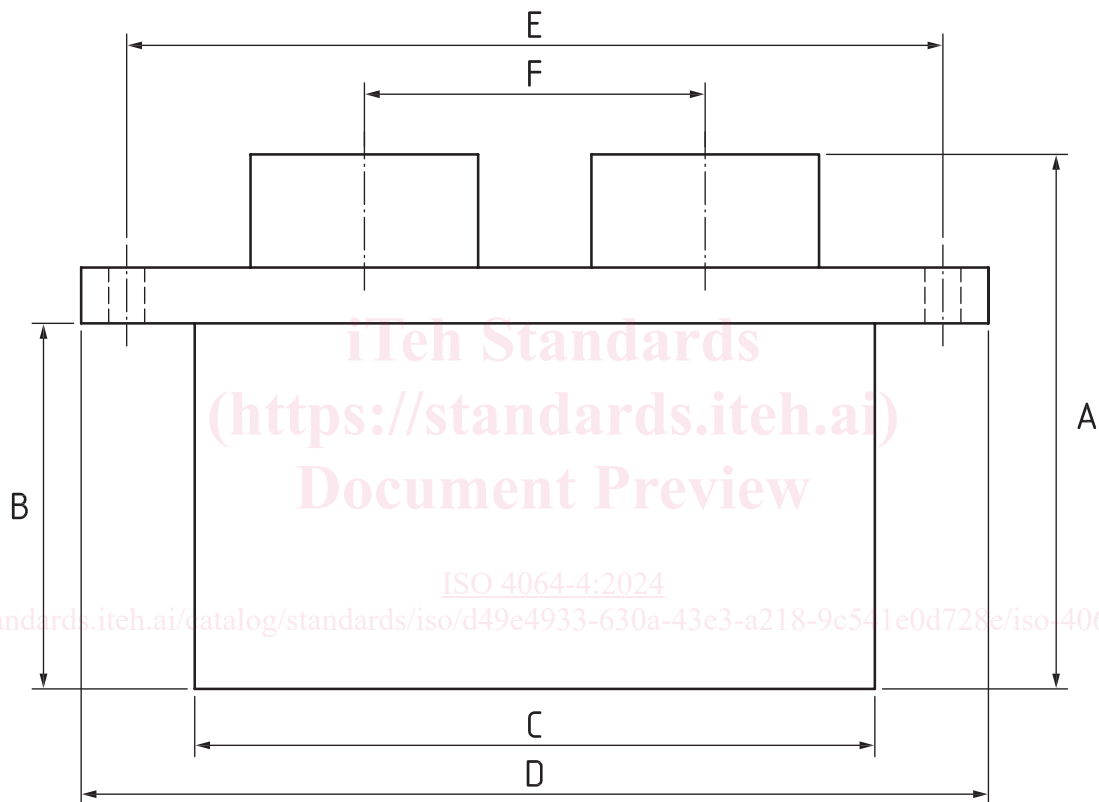
DN	Maximum A	Maximum B	Maximum C	Maximum D	Maximum E
40	210	125	125	190	147
50	210	125	125	190	147
65	210	125	125	190	147
80	235	147	145	190	180
100	235	147	145	190	180
125	235	147	145	190	180
150	370	252	210	290	245
200	370	258	220	290	276
250	370	258	220	290	276
300	370	258	220	290	276

Table 6 — Exchangeable metrological modules: dimensions — Meters with vertical flow pattern (WS)

Dimensions in millimetres

DN	Maximum A	Maximum B	Maximum C	Maximum D	Maximum E	Maximum F
50	232	150	130	160	170	
65	250	168	130	202	170	
80	270	177	166	250	218	
100	310	204	168	252	218	
150	425	290	255	345	292	
200	440	340	280	400	360	

Dimensions of exchangeable modules for use in combination meters shall be in accordance with [Figure 5](#) and [Table 7](#).



Key

A, B, C, D, E, F see [Table 7](#)

Figure 5 — Dimensions of exchangeable metrological modules — Combination meters

Table 7 — Exchangeable metrological modules: dimensions — Combination meters

Dimensions in millimetres

DN	Maximum A	Maximum B	Maximum C	Maximum D	Maximum E	Maximum F
50	310	195	260	300	266	150
65	345	215	260	330	280	150
80	365	235	260	320	290	150
100	385	255	260	335	300	150

[Figures 6 to 10](#) show examples of meters with interchangeable inserts.