

ISO/TC 35/SC 9

Secretariat: BSI

Voting begins on:
2023-11-17

Voting terminates on:
2024-01-12

**Rheological test methods —
Fundamentals and interlaboratory
comparisons —**

**Part 2:
Determination of the time-dependent
structural change (thixotropy)**

iteh Standards
(<https://standards.iteh.ai>)
Document Preview

[ISO/DTR 20659-2](https://standards.iteh.ai/catalog/standards/sist/da9f1ad6-de3a-46b3-acb5-28f3ce6ac6ab/iso-dtr-20659-2)

<https://standards.iteh.ai/catalog/standards/sist/da9f1ad6-de3a-46b3-acb5-28f3ce6ac6ab/iso-dtr-20659-2>

RECIPIENTS OF THIS DRAFT ARE INVITED TO SUBMIT, WITH THEIR COMMENTS, NOTIFICATION OF ANY RELEVANT PATENT RIGHTS OF WHICH THEY ARE AWARE AND TO PROVIDE SUPPORTING DOCUMENTATION.

IN ADDITION TO THEIR EVALUATION AS BEING ACCEPTABLE FOR INDUSTRIAL, TECHNOLOGICAL, COMMERCIAL AND USER PURPOSES, DRAFT INTERNATIONAL STANDARDS MAY ON OCCASION HAVE TO BE CONSIDERED IN THE LIGHT OF THEIR POTENTIAL TO BECOME STANDARDS TO WHICH REFERENCE MAY BE MADE IN NATIONAL REGULATIONS.



Reference number
ISO/DTR 20659-2:2023(E)

iTeh Standards
(<https://standards.iteh.ai>)
Document Preview

[ISO/DTR 20659-2](https://standards.iteh.ai/catalog/standards/sist/da9f1ad6-de3a-46b3-acb5-28f3ce6ac6ab/iso-dtr-20659-2)

<https://standards.iteh.ai/catalog/standards/sist/da9f1ad6-de3a-46b3-acb5-28f3ce6ac6ab/iso-dtr-20659-2>



COPYRIGHT PROTECTED DOCUMENT

© ISO 2023

All rights reserved. Unless otherwise specified, or required in the context of its implementation, no part of this publication may be reproduced or utilized otherwise in any form or by any means, electronic or mechanical, including photocopying, or posting on the internet or an intranet, without prior written permission. Permission can be requested from either ISO at the address below or ISO's member body in the country of the requester.

ISO copyright office
CP 401 • Ch. de Blandonnet 8
CH-1214 Vernier, Geneva
Phone: +41 22 749 01 11
Email: copyright@iso.org
Website: www.iso.org

Published in Switzerland

Contents

Page

| | |
|---|-----------|
| Foreword..... | iv |
| 1 Scope..... | 1 |
| 2 Normative references..... | 1 |
| 3 Terms and definitions..... | 1 |
| 4 Measuring technique for the determination of thixotropy..... | 1 |
| 4.1 Conditions for the measuring technique..... | 1 |
| 4.2 Flow curves, with evaluation of the hysteresis area (rotational test)..... | 3 |
| 4.2.1 Specification of the measuring profile..... | 3 |
| 4.2.2 Evaluation..... | 5 |
| 4.3 Step test with recovery, as a rotational test with controlled shear rate..... | 7 |
| 4.3.1 Specification of the measuring programme..... | 7 |
| 4.3.2 Evaluation..... | 8 |
| 4.4 Step test with recovery, as a rotational test with alternating controlled shear stress and shear rate..... | 9 |
| 4.4.1 Specification of the measuring programme..... | 9 |
| 4.4.2 Evaluation..... | 10 |
| 4.5 Step test with recovery, as a combined oscillatory/rotational test with controlled shear strain and shear rate, respectively..... | 10 |
| 4.5.1 Specification of the measuring programme..... | 10 |
| 4.5.2 Evaluation..... | 11 |
| 5 Comparative testing programme..... | 14 |
| 5.1 Aim of the comparative testing programme..... | 14 |
| 5.2 Performance of the tests..... | 14 |
| 5.2.1 Preliminary test..... | 14 |
| 5.2.2 Comparative testing programme..... | 15 |
| 5.3 Evaluation..... | 16 |
| 6 Result..... | 17 |
| 6.1 General..... | 17 |
| 6.2 Measurement of the Newtonian reference sample..... | 17 |
| 6.3 Flow curve..... | 17 |
| 6.4 Step test with specification of the shear rate in measuring segments 1 and 3..... | 17 |
| 6.5 Step test with controlled shear stress in measuring segments 1 and 3..... | 18 |
| 6.6 Step test as oscillatory test in measuring segments 1 and 3..... | 18 |
| 7 Analysis..... | 18 |
| Annex A (informative) Details of the comparative testing programme..... | 20 |
| Annex B (informative) Explanatory notes..... | 34 |
| Bibliography..... | 36 |

Foreword

ISO (the International Organization for Standardization) is a worldwide federation of national standards bodies (ISO member bodies). The work of preparing International Standards is normally carried out through ISO technical committees. Each member body interested in a subject for which a technical committee has been established has the right to be represented on that committee. International organizations, governmental and non-governmental, in liaison with ISO, also take part in the work. ISO collaborates closely with the International Electrotechnical Commission (IEC) on all matters of electrotechnical standardization.

The procedures used to develop this document and those intended for its further maintenance are described in the ISO/IEC Directives, Part 1. In particular, the different approval criteria needed for the different types of ISO document should be noted. This document was drafted in accordance with the editorial rules of the ISO/IEC Directives, Part 2 (see www.iso.org/directives).

ISO draws attention to the possibility that the implementation of this document may involve the use of (a) patent(s). ISO takes no position concerning the evidence, validity or applicability of any claimed patent rights in respect thereof. As of the date of publication of this document, ISO had not received notice of (a) patent(s) which may be required to implement this document. However, implementers are cautioned that this may not represent the latest information, which may be obtained from the patent database available at www.iso.org/patents. ISO shall not be held responsible for identifying any or all such patent rights.

Any trade name used in this document is information given for the convenience of users and does not constitute an endorsement.

For an explanation of the voluntary nature of standards, the meaning of ISO specific terms and expressions related to conformity assessment, as well as information about ISO's adherence to the World Trade Organization (WTO) principles in the Technical Barriers to Trade (TBT), see www.iso.org/iso/foreword.html.

This document was prepared by Technical Committee ISO/TC 35, *Paints and varnishes*, Subcommittee SC 9, *General test methods for paints and varnishes*.

A list of all parts in the ISO 20659 series can be found on the ISO website.

Any feedback or questions on this document should be directed to the user's national standards body. A complete listing of these bodies can be found at www.iso.org/members.html

Rheological test methods — Fundamentals and interlaboratory comparisons —

Part 2: Determination of the time-dependent structural change (thixotropy)

1 Scope

This document gives information on an interlaboratory comparison for the determination of the time-dependent structural change (thixotropy) using rheological test methods. Thixotropy is the reversible, time-dependent decrease of shear viscosity η at a constant shear rate $\dot{\gamma}$ or shear stress τ .

This document provides examples of fields of application, in which important material properties can be characterized by the thixotropy. These fields of application include:

- effectiveness of rheological additives and thixotropic agents, respectively;
- stability of the structure at rest (e.g. behaviour when starting to pump);
- wet film thickness after processing;
- levelling and sagging behaviour (e.g. without brushmarks or sag formation);
- orientation of effect pigments.

2 Normative references

[ISO/DTR 20659-2](https://standards.iteh.ai/catalog/standards/sist/da9f1ad6-de3a-46b3-acb5-28f3ce6ac6ab/iso-dtr-20659-2)

The following documents are referred to in the text in such a way that some or all of their content constitutes requirements of this document. For dated references, only the edition cited applies. For undated references, the latest edition of the referenced document (including any amendments) applies.

ISO 3219-1, *Rheology — Part 1: Vocabulary and symbols for rotational and oscillatory rheometry*

3 Terms and definitions

For the purposes of this document, the terms and definitions given in ISO 3219-1.

ISO and IEC maintain terminology databases for use in standardization at the following addresses:

- ISO Online browsing platform: available at <https://www.iso.org/obp>
- IEC Electropedia: available at <https://www.electropedia.org/>

4 Measuring technique for the determination of thixotropy

4.1 Conditions for the measuring technique

[Clause 4](#) briefly describes methods that are currently in use. In principle, the thixotropy depends on the temperature, the pressure and the thermal and mechanical history of the material. A detailed specification of the measuring profile is therefore a precondition for reproducible measurements and comparable evaluation; this applies especially for the level of shear load (shear rates, shear stresses,

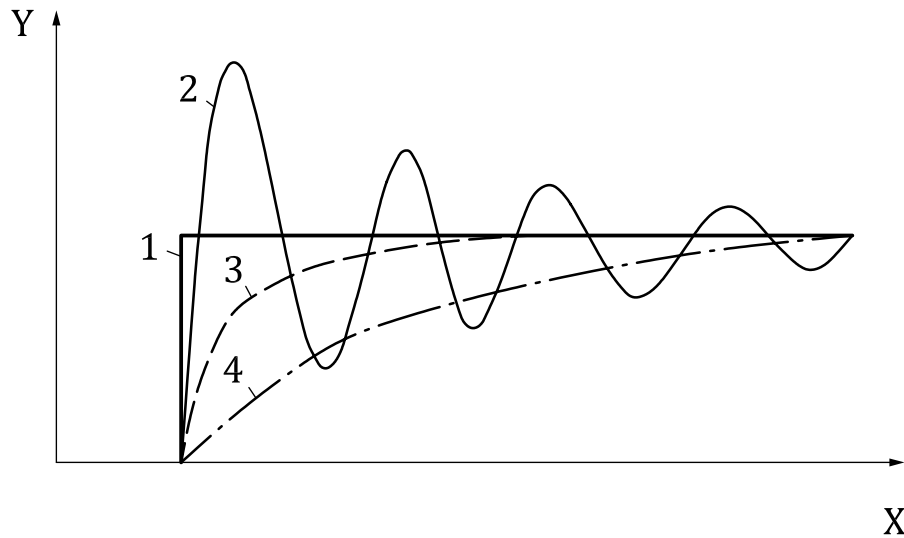
shear strain, oscillation frequencies), the duration of the individual measuring segments and the number of measuring points.

Thixotropy can be determined by rotational as well as by oscillatory tests. Measuring devices equipped with a mechanical bearing or air bearing are suitable for rotational tests. For oscillatory tests a rheometer with air bearing is used. It is essential to ensure that the measuring device is used in combination with the suitable measuring geometry, i.e. in accordance with the torque range, the torque resolution and the rotational speed range. Typically, rotational viscometers and rheometers that are subject to test equipment monitoring and are regularly calibrated and verified (if necessary), are used. Measuring results that are independent of geometry can only be obtained by using absolute measurement geometries according to ISO 3219-2.

If, independently of the measuring device and the measuring method used, no time-stable measuring results are obtained during the measurement of Newtonian standard samples, the measuring device, the measuring geometry or the measuring method is unsuitable. If the functional course of these time-stable measured values meets the reference values within the used measuring range, it is guaranteed that the measuring device, the measuring geometry and the measuring method are suitable for the investigation of the sample. Typically, this inspection is carried out under isothermal conditions in the expected viscosity range of the sample by using several Newtonian standard samples. If preliminary tests reveal that the viscosity of the measuring sample varies over three decades, then the verification of the measuring device and measuring geometry are performed with three Newtonian standard samples. This is carried out for all measuring temperatures. The influences due to application, e.g. sample filling, evaporation, shear heating, wrong choice of method and the sample material coming out of the gap, are mostly discernible and detected by this kind of verification.

Upon measurement, the possibility of evaporation is considered. A reduction of this influence can be reached e.g. by using a sample area coverage. All boundary conditions of the measurement are documented in the record, especially the usage of a coverage, the kind of sample trimming and the adjustment of the gap distance. According to the specifications of the measuring methods described in [Clause 4](#), the methods are changed if influences on the measuring results occur. Another parameter is checking whether the duration of the load is shorter than the medium time scale of the structural changes of the sample. This is determined for each measuring method and its specifications by preliminary tests. However, the duration of the load is selected in consideration of situations where conditions of application of the sample are later. If this duration is longer than the time scale of structural change of the sample, then a thixotropic behaviour will not be detected; nevertheless, the sample can be still thixotropic. In order to determine the thixotropy in a correct and reproducible manner, when filling the measuring geometry, it is considered that the time between filling and the start of the measurement has an influence on the measuring result. This time is distinctly longer than the time scale of the structural change. This can be determined by preliminary measurements in which the waiting time is varied. The waiting time is sufficiently high if the thixotropy of the sample is comparable for two measurements running each after a fresh filling within the limits of the requested precision in accordance with the measuring method chosen.

Measuring points can only be recorded if each single measuring point is controlled by the instrument according to the specification. At every change of the specified value, a transient process of the entire measuring equipment occurs towards the new specified value. This transient process can be different (see [Figure 1](#)).

**Key**

- X time, t
 Y shear stress, τ , or shear rate, $\dot{\gamma}$
 1 specified function
 2, 3, 4 different adjustment behaviours

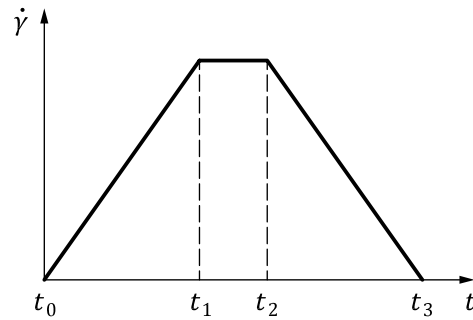
Figure 1 — Different transient behaviour during the controlling of each individual measuring point

The measuring point is not detected until the deviation between the specified value and the desired value is small enough. The integration time (time per measuring point minus adjustment time), which is considered for calculating the average of a data point, influences the measuring result. This condition is valid for constant shear load as well as for a time-dependent change of the load.

4.2 Flow curves, with evaluation of the hysteresis area (rotational test)

4.2.1 Specification of the measuring profile

The specification is provided in the form of three measuring segments comprising a continuous or a step-like discontinuous upward ramp, a holding time and a downward ramp (see [Figures 2](#) and [3](#)). The shear rate $\dot{\gamma}$ is specified as a function of time. Both ramp types can be used with linear and logarithmic distribution. This is valid for the shear rate and for the time duration of the measuring points. At the beginning, this can also be preceded by a segment with defined pre-shear and/or a waiting time without shear (e.g. 5 min).

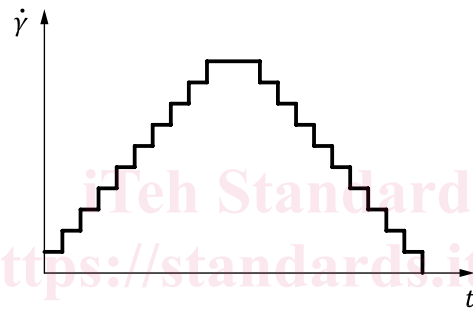


Key

$\dot{\gamma}$ shear rate

t time

Figure 2 — Specified profile: shear rate/time function with the three measuring segments continuous upward ramp, holding time and continuous downward ramp



Key

$\dot{\gamma}$ shear rate

t time

iteh Standards
(<https://standards.iteh.ai>)
Document Preview

[ISO/DTR 20659-2](https://standards.iteh.ai/catalog/standards/sist/da9f1ad6-de3a-46b3-acb5-28f3ce6ac6ab/iso-dtr-20659-2)

<https://standards.iteh.ai/catalog/standards/sist/da9f1ad6-de3a-46b3-acb5-28f3ce6ac6ab/iso-dtr-20659-2>

Figure 3 — Specified profile: shear rate/time function with the three measuring segments stepped upward ramp, holding time and stepped downward ramp

Proposals for a typical measuring programme are:

Method A, with a linear ramp for the shear rate:

- 1) upward ramp with $\dot{\gamma} = 0 \text{ s}^{-1}$ to $1\,000 \text{ s}^{-1}$, duration 3 min, with 45 measuring points;
- 2) holding time with $\dot{\gamma} = 1\,000 \text{ s}^{-1} = \text{constant}$, duration 1 min, with 15 measuring points;
- 3) downward ramp with $\dot{\gamma} = 1\,000 \text{ s}^{-1}$ to 0 s^{-1} , duration 3 min, with 45 measuring points.

The period of time for the up- and down-ramps is the same. Moreover, it is defined whether the test is carried out with continuous or step-like ramp.

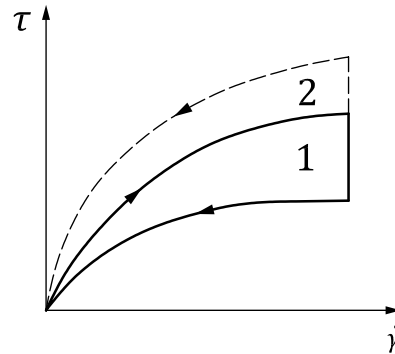
Method B, with a logarithmic ramp for the shear rate:

- 4) upward ramp with $\dot{\gamma} = 0,1 \text{ s}^{-1}$ to $1\,000 \text{ s}^{-1}$, duration 3 min, with 61 measuring points. If a viscometer with a mechanical bearing is used, then 10 s^{-1} can be used as the minimum shear rate;
- 5) holding time with $\dot{\gamma} = 1\,000 \text{ s}^{-1} = \text{constant}$, duration 1 min, with 15 measuring points;
- 6) downward ramp with $\dot{\gamma} = 1\,000 \text{ s}^{-1}$ to $0,1 \text{ s}^{-1}$, duration 3 min, with 61 measuring points.

The period of time for the up- and down-ramps is the same. Moreover, it is defined whether the test is carried out with continuous or step-like ramp.

4.2.2 Evaluation

If the measuring sample displays behaviour that varies with shear load and time, a so-called hysteresis area is generated between the upward and downward flow curves. Here, hysteresis means curve loop. Flow curves are usually presented as shear stress τ (in Pa) against shear rate $\dot{\gamma}$ (in s^{-1}) (see [Figure 4](#)).



Key

- τ shear stress
- $\dot{\gamma}$ shear rate
- 1 hysteresis area with reduction of structural strength under shear load
- 2 hysteresis area with increase in structural strength under shear load

Figure 4 — Measuring result: flow curves with hysteresis area

When the shear rate increases from zero to a maximum value and then decreases to zero following a defined time programme, the hysteresis curve is generated from the two resulting flow curves, which do not overlap.

A larger area is an indication for a stronger change in structure. The structural strength can decrease or increase.

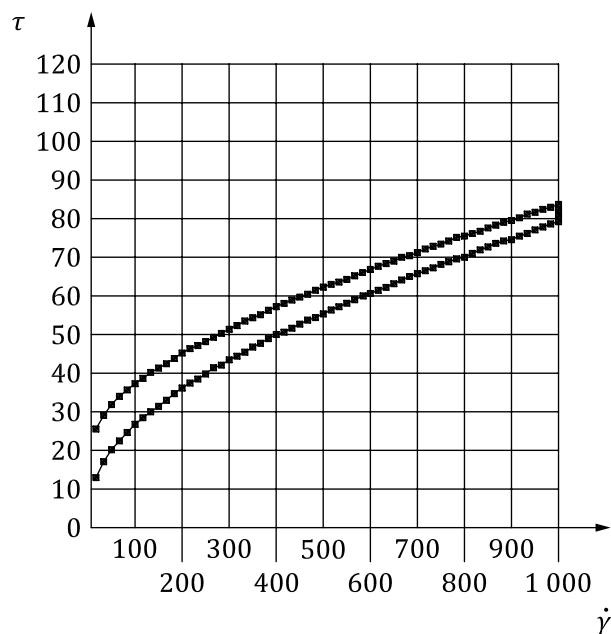
The duration of the upward ramp and downward ramp depends on the material. If it is chosen too long, the superstructure of the measuring sample would be reduced too much already during the upward ramp. As a result, the hysteresis area can become too small for a meaningful evaluation.

This evaluation is performed by calculating the hysteresis area in Pa/s.

[Figure 5](#) and [Figure 6](#) show typical measuring results for a waterborne coating material obtained with the two measuring methods, A and B.

With a linear ramp, the shear load is higher overall across the entire shear rate range compared to the logarithmic ramp. This results in a smaller calculated hysteresis area. The advantage of method B is that more measuring points are recorded in the lower shear rate range.

This measuring method provides information about the behaviour of the measuring sample in a continuous shear process, but not about what happens when the shear load occurs at rest, for example whether and to what extent recovery of the structure takes place. The method yields a first overview of the behaviour of the investigated material.



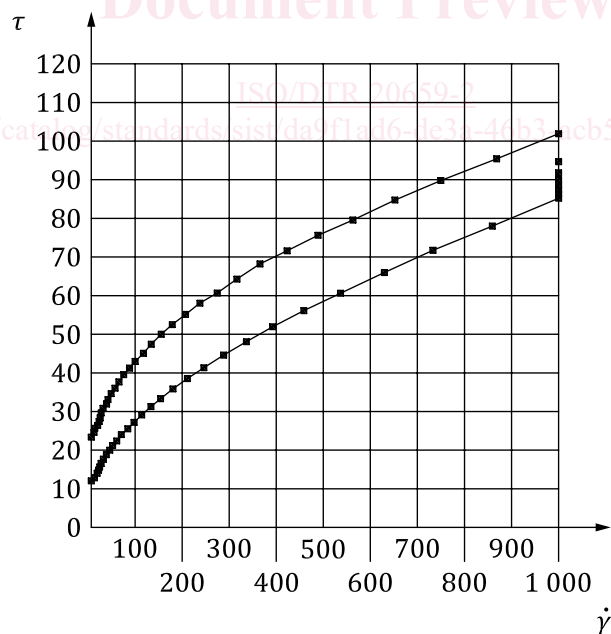
Key

τ shear stress

$\dot{\gamma}$ shear rate

NOTE The calculated hysteresis area for this method is 7 167 Pa/s.

Figure 5 — Flow curves measured using a linear ramp, with evaluation according to method A



Key

τ shear stress

$\dot{\gamma}$ shear rate

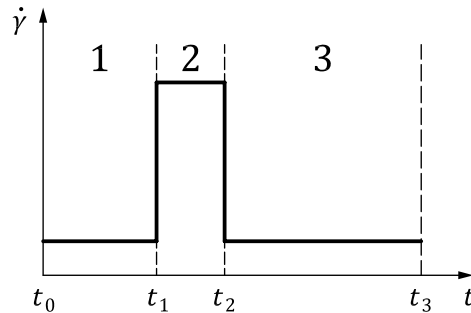
NOTE The calculated hysteresis area for this method is 16 810 Pa/s.

Figure 6 — Flow curves measured using a logarithmic ramp, with evaluation according to method B

4.3 Step test with recovery, as a rotational test with controlled shear rate

4.3.1 Specification of the measuring programme

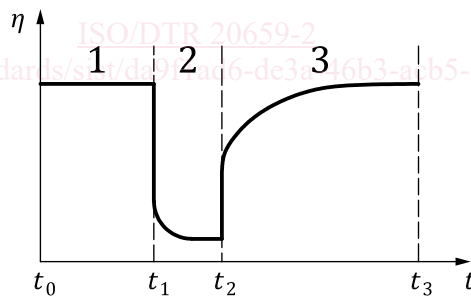
The shear load is specified in the form of three measuring segments, first with a constant low shear rate, then with a constant high shear rate, and finally again with a constant low shear rate $\dot{\gamma}$ (see [Figure 7](#)). At the beginning, this can also be preceded by a segment with defined pre-shear and/or a waiting time without shear (e.g. 5 min).



Key

- $\dot{\gamma}$ shear rate
- t time
- 1 low shear rate
- 2 high shear rate
- 3 low shear rate

Figure 7 — Specified profile: three measuring segments with a low shear rate, high shear rate and then low shear rate again



Key

- η shear viscosity
- t time
- 1 low shear load
- 2 high shear load with reduction of structural strength
- 3 low shear load with structural recovery

Figure 8 — Measuring result of time-dependent viscosity function of a thixotropic material

Proposals for a typical measuring programme are as follows:

- 1) low shear rate with $\dot{\gamma} = 0,1 \text{ s}^{-1}$ = constant, duration 2 min, with 30 measuring points. If a viscometer with a mechanical bearing is used, then 10 s^{-1} can be used as the minimum shear rate;
- 2) high shear rate with $\dot{\gamma} = 1\,000 \text{ s}^{-1}$ = constant, duration 2 min, with 30 measuring points;

3) low shear rate with $\dot{\gamma} = 0,1 \text{ s}^{-1} = \text{constant}$, duration 5 min, with 100 measuring points.

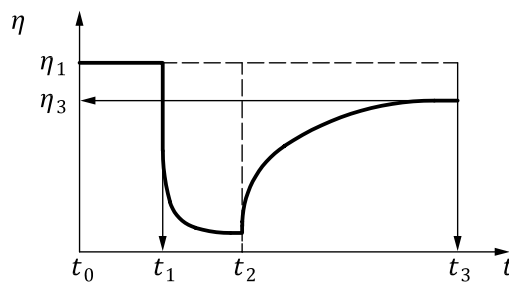
The shear rate for the measuring segments 1 and 3 is the same.

4.3.2 Evaluation

As a preparatory step, the average of the last 5 measuring points is formed for each of the three measuring segments. Proposals for evaluation programmes are as follows (see also [Figure 8](#)):

- 1) Percentage structural recovery, expressed as a viscosity value at the end of measuring segment 3 in comparison to the reference value of the end of measuring segment 1, with the result stated in per cent;

EXAMPLE 1 Reference value $\eta_1 = 10 \text{ Pa}\cdot\text{s}$; and at the end of measuring segment 3 $\eta_3 = 8 \text{ Pa}\cdot\text{s}$; Calculation: $(8 \text{ Pa}\cdot\text{s}/10 \text{ Pa}\cdot\text{s}) \times 100 \% = 80 \%$. See [Figure 9](#).

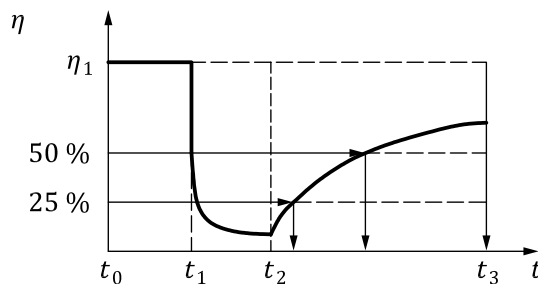


Key
 η shear viscosity
 t time

Figure 9 — Evaluation of the percentage structural recovery

- 2) Time points for 25 % and 50 % structural recovery in measuring segment 3 in comparison with the reference value from the end of measuring segment 1, data in s;

EXAMPLE 2 Reference value $\eta_1 = 10 \text{ Pa}\cdot\text{s}$; from the diagram or from the table of measuring data, the two time points are determined at 25 % of the reference value on the one hand, therefore $\eta = 2,5 \text{ Pa}\cdot\text{s}$, and at 50 % of the reference value on the other hand, therefore $\eta = 5 \text{ Pa}\cdot\text{s}$, is reached. See [Figure 10](#).



Key
 η shear viscosity
 t time

Figure 10 — Time points for 25 % and 50 % structural recovery

- 3) Slope of the curve during structural recovery in the first 60 s of measuring segment 3, data in $\text{Pa}\cdot\text{s}/\text{s}$;