



Designation: **B107/B107M—12 B107/B107M – 13**

Standard Specification for Magnesium-Alloy Extruded Bars, Rods, Profiles, Tubes, and Wire¹

This standard is issued under the fixed designation B107/B107M; the number immediately following the designation indicates the year of original adoption or, in the case of revision, the year of last revision. A number in parentheses indicates the year of last reapproval. A superscript epsilon (ϵ) indicates an editorial change since the last revision or reapproval.

This standard has been approved for use by agencies of the U.S. Department of Defense.

1. Scope*

1.1 This specification covers magnesium-alloy extruded bars, rods, profiles, tubes, and wire of the composition given in [Table 1](#).

1.2 The values stated in either inch-pound or SI units are to be regarded separately as standards. The SI units are shown in brackets or in separate tables or columns. The values stated in each system are not exact equivalents; therefore, each system must be used independent of the other. Combining values from the two systems may result in nonconformance with the specification.

1.3 Unless the order specifies the “M” specification designation, the material shall be furnished to the inch-pound units.

2. Referenced Documents

2.1 The following documents of the issue in effect on date of order acceptance form a part of this specification to the extent referenced herein.

2.2 *ASTM Standards:*²

[B117 Practice for Operating Salt Spray \(Fog\) Apparatus](#)

[B296 Practice for Temper Designations of Magnesium Alloys, Cast and Wrought](#)

[B557 Test Methods for Tension Testing Wrought and Cast Aluminum- and Magnesium-Alloy Products](#)

[B557M Test Methods for Tension Testing Wrought and Cast Aluminum- and Magnesium-Alloy Products \(Metric\)](#)

[B660 Practices for Packaging/Packing of Aluminum and Magnesium Products](#)

[B666/B666M Practice for Identification Marking of Aluminum and Magnesium Products](#)

[B951 Practice for Codification of Unalloyed Magnesium and Magnesium-Alloys, Cast and Wrought](#)

[B953 Practice for Sampling Magnesium and Magnesium Alloys for Spectrochemical Analysis](#)

[B954 Test Method for Analysis of Magnesium and Magnesium Alloys by Atomic Emission Spectrometry](#)

[E29 Practice for Using Significant Digits in Test Data to Determine Conformance with Specifications](#)

[E55 Practice for Sampling Wrought Nonferrous Metals and Alloys for Determination of Chemical Composition](#)

[E527 Practice for Numbering Metals and Alloys in the Unified Numbering System \(UNS\)](#)

3. Terminology

3.1 *Definitions:*

3.1.1 *extruded bar*—a solid extrusion, long in relation to its cross-sectional dimensions, having a symmetrical cross section that is square or rectangular with sharp or rounded corners or edges, or is a regular hexagon or octagon, and whose width or greatest distance between parallel faces is over 0.375 in. [10 mm].

3.1.2 *extruded profile*—a hollow or solid extrusion, long in relation to its cross-sectional dimensions, whose cross section is other than that of wire, rod, bar, or tube.

3.1.3 *extruded rod*—a solid round extrusion, long in relation to its diameter, whose diameter is over 0.375 in. [10 mm].

¹ This specification is under the jurisdiction of ASTM Committee B07 on Light Metals and Alloys and is the direct responsibility of Subcommittee B07.04 on Magnesium Alloy Cast and Wrought Products.

Current edition approved Nov. 1, 2012; Nov. 1, 2013. Published November 2012/December 2013. Originally approved in 1936. Last previous edition approved in 2007/2012 as B107/B107M—07-B107/B107M – 12. DOI: 10.1520/B0107-B0107M-12-10.1520/B0107_B0107M-13.

² For referenced ASTM standards, visit the ASTM website, www.astm.org, or contact ASTM Customer Service at service@astm.org. For *Annual Book of ASTM Standards* volume information, refer to the standard's Document Summary page on the ASTM website.

*A Summary of Changes section appears at the end of this standard

TABLE 1 Chemical Requirements^A

NOTE 1—Analysis shall regularly be made only for the elements specifically mentioned in this table. If, however, the presence of other elements is suspected or indicated in the course of routine analysis to be in amounts greater than the specified limits, further analysis shall be made to determine that the total of these other elements is not in excess of the limits specified in the last column of the table.

NOTE 2—The following applies to all specified limits in this table: For purposes of acceptance and rejection, an observed value or a calculated value obtained from analysis should be rounded-off to the nearest unit in the last right-hand place of figures used in expressing the specified limit.

Alloy ^B		Composition, %															
UNS No.	ASTM No.	Magnesium	Aluminum	Calcium	Copper	Iron	Lithium	Manganese	Neodymium	Nickel	Rare Earths	Silicon	Yttrium	Zirconium, min	Zinc	Other Impurities, each	Total Other ^C Impurities
M11311	AZ31B	remainder	2.5-3.5	0.04	0.05	0.005		0.20-1.0		0.005		0.10		...	0.6-1.4		0.30
M11312	AZ31C	remainder	2.4-3.6	...	0.10	...		0.15-1.0 ^D		0.03		0.10		...	0.50-1.5		0.30
M11610	AZ61A	remainder	5.8-7.2	...	0.05	0.005		0.15-0.5		0.005		0.10		...	0.40-1.5		0.30
M11800	AZ80A	remainder	7.8-9.2	...	0.05	0.005		0.12-0.5		0.005		0.10		...	0.20-0.8		0.30
M15100	M1A	remainder	...	0.30	0.05	...		1.2-2.0		0.01		0.10			0.30
M18432	WE43B	remainder	0.02	0.010	0.2	0.03	2.0-2.5	0.005	1.9 ^E	...	3.7-4.3	0.40-1.0	^F	0.01	...
M18434	WE43C	remainder	0.02	0.005		0.03	2.0-2.5	0.0020	0.3-1.0 ^G		3.7-4.3	0.2-1.0	0.06	0.01	...
M18410	WE54A	remainder	0.03	...	0.2	0.03	1.5-2.0	0.005	2.0 ^E	0.01	4.75-5.5	0.40-1.0	0.20	0.2	...
M16400	ZK40A	remainder		0.45	3.5-4.5		0.30
M16600	ZK60A	remainder		0.45	4.8-6.2		0.30

^A Limits are in weight percent maximum unless shown as a range or otherwise stated.

^B These alloy designations were established in accordance with Practice B951 (see also Practice E527).

^C Includes listed elements for which no specific limit is shown.

^D Manganese minimum limit need not be met if iron is 0.005 %, or less.

^E Other Rare Earths shall be principally heavy rare earths, for example, Gadolinium, Dysprosium, Erbium, and Ytterbium. Other Rare Earths are derived from the Yttrium, typically 80 % Yttrium 20 % heavy rare earths.

^F Zinc + Silver content shall not exceed 0.20 % in WE43B.

^G Other Rare Earths are heavy rare earths, such as Gadolinium, Dysprosium, Erbium, Samarium, and Ytterbium. The total of Gadolinium + Dysprosium + Erbium shall be 0.3-1.0 %. Samarium shall not exceed 0.04 % and Ytterbium shall not exceed 0.02 %

3.1.4 *extruded tube*—a hollow extrusion, long in relation to its cross-sectional dimensions, which is symmetrical and is round, square, rectangular, hexagonal, octagonal, or elliptical with sharp or rounded corners, and has a uniform wall thickness except as affected by corner radii.

3.1.5 *producer*—the primary manufacturer of a material.

3.1.6 *supplier*—includes only the category of jobbers and distributors as distinct from producer.

3.1.7 *wire*—a solid section long in relation to its cross-sectional dimensions, having a cross section that is round, hexagonal, or octagonal, and whose diameter, width, or greatest distance between parallel faces is up through 0.375 in. [10 mm], or having a symmetrical cross section that is square or rectangular (excluding flattened wire) with sharp or rounded corners or edges.

3.2 *Definitions of Terms Specific to This Standard:*

3.2.1 *capable of*—means that the test need not be performed by the producer of the material. However, should subsequent testing by the purchaser establish that the material does not meet these requirements, the material shall be subject to rejection.

4. Ordering Information

4.1 Orders for material to this specification shall include the following information:

4.1.1 This specification number,

4.1.2 Quantity in pieces or pounds [kilograms],

4.1.3 Alloy (Section 6),

4.1.4 Temper (Section 7),

4.1.5 Nominal cross-sectional dimensions as follows:

4.1.5.1 For rod and round wire—diameter,

4.1.5.2 For square corner bars and wire—depth and width,

4.1.5.3 For sharp cornered hexagonal or octagonal bars and wire—distance across flats,

4.1.5.4 For round tube—outside or inside diameter and wall thickness,

4.1.5.5 For square or sharp cornered other than round tube—distance across flats and wall thickness,

4.1.5.6 For round cornered bars and wire; profiles; tube other than round, square, rectangular, hexagonal or octagonal with sharp corners—drawing required,

4.1.6 Length,

4.1.7 Surface finish (see [9.2.10.2](#)),

4.1.8 Whether inspection or witness of inspection and tests by the purchaser's representative is required prior to material shipment (Section [4.1.1](#)),

4.1.9 Whether certification is required (Section [4.2.13](#)),

4.1.10 Whether marking for identification is required (Section [4.3.14](#) and Practice [B660](#)).

4.1.11 Whether special packaging is required for shipment (Section [4.4.15](#)).

5. Quality Assurance

5.1 *Responsibility for Inspection*—Unless otherwise specified in the contract or purchase order, the producer or supplier is responsible for the performance of all inspection and test requirements specified herein. Except as otherwise specified in the contract or order, the producer or supplier may use his own or any other suitable facilities for the performance of the inspection and test requirements specified herein, unless disapproved by the purchaser at the time the order is placed. The purchaser shall have the right to perform any of the inspections and tests set forth in this specification where such inspections are deemed necessary to assure that material conforms to prescribed requirements.

6. Chemical Composition

6.1 *Limits*—The bars, rods, profiles, tubes, or wire shall conform to the chemical requirements in [Table 1](#).

6.2 *Number of Samples*—The number of samples taken for determination of chemical composition shall be as follows:

6.2.1 When samples are taken at the time extrusion ingots are cast for determination of conformance to [Table 1](#), one sample shall be taken for each group of ingots of the same alloy, poured at the same time, from the same source of molten metal when a batch process is employed. In cases where a continuous casting process is employed, one sample shall be taken for each quantity of material cast equivalent in size (weight or volume) to the last holding vessel before casting or 5000 lb [2270 kg], whichever is less. Ingots not conforming to [Table 1](#) shall be rejected.

6.2.2 Unless compliance is established by [6.2.1](#), sampling of the finished product shall be in accordance with Practice [E55](#). One sample shall be taken for each 4000 lb (2000 kg) or less of material comprising the lot, except that not more than one analysis shall be required per piece.

6.3 *Methods of Chemical Analysis*—Any suitable method of chemical analysis may be used. In case of dispute, the analysis shall be made by methods given in Test Method [B954](#) or any other standard methods of analysis approved by ASTM unless some other method is agreed upon.

7. Tensile Requirements

7.1 *Limits*—The bars, rods, profiles, tubes, and wire shall conform to the tensile properties requirements in [Table 2](#) unless other agreement is made between producer or supplier and purchaser. Properties for sizes and tempers not shown in [Table 2](#) shall be as agreed by producer or supplier and purchaser.

7.2 *Number of Specimens*—From material having nominal weight of less than 1 lb/linear ft [through 1.7 kg/linear m], one tension test sample shall be taken for each 1000 lb [500 kg] or fraction thereof in the shipment. For material having a nominal weight of 1 lb/linear ft [over 1.7 kg/linear m] or more, one tension test shall be taken for each 1000 ft [300 m] or fraction thereof in the shipment. Other procedures for selecting samples may be employed if agreed upon by the seller and the purchaser.

7.3 Geometry of test specimens and the location in the product from which they are taken shall be as specified in Test Methods [B557](#) and [B557M](#).

7.4 *Test Methods*—The tension tests shall be made in accordance with Test Methods [B557](#) and [B557M](#).

7.5 *Retests*—If any tension specimen fails to conform to the requirements prescribed in [Table 2](#), two additional specimens shall be selected and tested from other bars, rods, profiles, tubes, or wire in the lot. If either of these specimens fails to conform to the applicable requirements, the material may be rejected. If, however, the failure of the specimens to conform to the requirements is the result of an inadequate thermal treatment, the material may be reheat treated and resampled in accordance with [7.2](#).



TABLE 2 Tensile Requirements

NOTE 1—For purposes of determining conformance with this specification, each value for tensile strength and yield strength shall be rounded to the nearest 100 psi and each value for elongation shall be rounded to the nearest 0.5 %, both in accordance with the rounding method of Practice E29.

Alloy ^A		Temper ^A	Form	Specified Diameter or Thickness	Over-Through	Specified Cross-Sectional Area, in. ² or OD of Tube, in.	Tensile Strength, min		Yield Strength (0.2 % offset), min		Elongation in 2 in. [50 mm] or 4 × Dia., min, % ^{B,C}	
UNS No.	ASTM No.			in. ^{D,E}	[mm]		ksi	[MPa]	ksi	[MPa]		
M11311	AZ31B	F	bars, rods, profiles, and wire	0.249 and under	[...–6.30]	all	35.0	[240]	21.0	[145]	7	
				0.250–1.499	[6.30–40.00]	all	35.0	[240]	22.0	[150]	7	
				1.500–2.499	[40.00–60.00]	all	34.0	[235]	22.0	[150]	7	
				2.500–4.999	[60.00–130.00]	all	32.0	[220]	20.0	[140]	7	
			hollow profiles	all		all	32.0	[220]	16.0	[110]	8	
				tubes	0.028–0.250	[0.70–6.30]	6.000 [150.00] and under	32.0	[220]	20.0	[140]	8
					0.250–0.750	[6.30–20.00]		32.0	[220]	16.0	[110]	4
M11610	AZ61A	F	bars, rods, profiles, and wire	0.249 and under	[...–6.30]	all	38.0	[260]	21.0	[145]	8	
				0.250–2.499	[6.30–60.00]	all	40.0	[275]	24.0	[165]	9	
				2.500–4.999	[60.00–130.00]	all	40.0	[275]	22.0	[150]	7	
			hollow profiles	all		all	36.0	[250]	16.0	[110]	7	
				tubes	0.028–0.750	[0.70–20.00]	6.000 [150.00] and under	36.0	[250]	16.0	[110]	7
M11800	AZ80A	F	bars, rods, solid profiles, and wire	0.249 and under	[...–6.30]	all	43.0	[295]	28.0	[195]	9	
				0.250–1.499	[6.30–40.00]	all	43.0	[295]	28.0	[195]	8	
				1.500–2.499	[40.00–60.00]	all	43.0	[295]	28.0	[195]	6	
				2.500–4.999	[60.00–130.00]	all	42.0	[290]	27.0	[185]	4	
M11800	AZ80A	T5	bars, rods, solid profiles, and wire	0.249 and under	[...–6.30]	all	47.0	[325]	30.0	[205]	4	
				0.250–2.499	[6.30–60.00]	all	48.0	[330]	33.0	[230]	4	
				2.500–4.999	[60.00–130.00]	all	45.0	[310]	30.0	[205]	2	
M15100	M1A	F	bars, rods, profiles, and wire	0.249 and under	[...–6.30]	all	30.0	[205]	F	F	2	
				0.250–1.499	[6.30–40.00]	all	32.0	[220]	F	F	3	
				1.500–2.499	[40.00–60.00]	all	32.0	[220]	F	F	2	
				2.500–4.999	[60.00–130.00]	all	29.0	[200]	F	F	2	
			hollow profiles	all		all	28.0	[195]	F	F	2	
				tubes	0.028–0.750	[0.70–20.00]	6.000 [150.00] and under	28.0	[195]	F	F	2
M18430	WE43B	T5	bars, rods, solid profiles and wire	0.250-1.999	[6.3-50.00]	all	36.0	[250]	23.0	[160]	4	
M18430	WE43B	T5	bars, rods, solid profiles and wire	2.00-5.00	[50-130.00]	all	35.0	[240]	22.0	[150]	4	



TABLE 2 Continued

Alloy ^A		Temper ^A	Form	Specified Diameter or Thickness	Over-Through	Specified Cross-Sectional Area, in. ² or OD of Tube, in.	Tensile Strength, min		Yield Strength (0.2 % offset), min		Elongation in 2 in. [50 mm] or 4 × Dia., min, % ^{B,C}
UNS No.	ASTM No.			in. ^{D,E}	[mm]		ksi	[MPa]	ksi	[MPa]	
M18430	WE43B	T6	bars, rods, solid profiles and wire	0.250-1.999	[6.3-50.00]	all	36.0	[250]	22.0	[150]	4
M18430	WE43B	T6	bars, rods, solid profiles and wire	2.00-5.00	[50-130.00]	all	35.0	[240]	20.0	[140]	4
<u>M18434</u>	<u>WE43C</u>	<u>T5</u>	<u>bars, rods, solid profiles and wire</u>	<u>0.5 - 4.75</u>	<u>[12.7-120.00]</u>	<u>all</u>	<u>44.0</u>	<u>[303]</u>	<u>28.0</u>	<u>[195]</u>	<u>6</u>
M18410	WE54A	T5	bars, rods, solid profiles and wire	0.250-1.999	[6.3-50.00]	all	36.0	[250]	26.0	[180]	4
M18410	WE54A	T5	bars, rods, solid profiles and wire	2.00-5.00	[50-130.00]	all	36.0	[250]	25.0	[170]	4
M18410	WE54A	T6	bars, rods, solid profiles and wire	0.250-1.999	[6.3-50.00]	all	38.0	[260]	26.0	[180]	4
M18410	WE54A	T6	bars, rods, solid profiles and wire	2.00-5.00	[50-130.00]	all	36.0	[250]	25.0	[175]	4
M16400	ZK40A	T5	bars, rods, profiles, and wire	all		3.000 [1900] and under	37.0	[255]	34.0	[235]	4.0
			hollow profiles	all		all	40.0	[275]	37.0	[255]	4.0
			tubes	0.062–0.500	[1.60–12.50]	3.000 [80.00] and under	40.0	[275]	36.0	[255]	4.0
M16600	ZK60A	F	bars, rods, profiles and wire	all		4.999 [3200] and under	43.0	[295]	31.0	[215]	5
						5.000–39.999 [3201–26 000]	43.0	[295]	31.0	[215]	6
			hollow profiles	all		all	40.0	[275]	28.0	[195]	5
			tubes	0.028–0.750	[0.70–20.00]	3.000 [80.00] and under	40.0	[275]	28.0	[195]	5
M16600	ZK60A	T5	bars, rods, profiles, and wire	all		4.999 [3200] and under	45.0	[310]	36.0	[250]	4
						5.000–24.999 [3201–16 000]	45.0	[310]	34.0	[235]	6
						25.000–39.999 [16 001–26 000]	43.0	[295]	31.0	[215]	6
			hollow profiles	all		all	46.0	[315]	38.0	[260]	4

**TABLE 2** *Continued*

Alloy ^A		Temper ^A	Form	Specified Diameter or Thickness	Over-Through	Specified Cross-Sectional Area, in. ² or OD of Tube, in.	Tensile Strength, min		Yield Strength (0.2 % offset), min		Elongation in 2 in. [50 mm] or 4 × Dia., min, % ^{B,C}
UNS No.	ASTM No.			in. ^{D,E}	[mm]		ksi	[MPa]	ksi	[MPa]	
			tubes	0.028–0.250	[0.70–6.30]	3.000 [80.00] and under	46.0	[315]	38.0	[260]	4
				0.094–1.188	[2.50–30.00]	3.001 [80.00]–8.500 [215]	44.0	[305]	33.0	[230]	4

^A See Practice **B296**.^B Elongation of full-section and machined sheet-type specimens is measured in 2 in. [50 mm] of machined round specimens, in 4 × specimen dia. [5 × dia. in metric].^C For material of such dimensions that a standard test specimen cannot be obtained, for wire less than 0.125 in. diameter [3.2 mm diameter], or for material thinner than 0.062 in. [1.60 mm] the test for elongation is not required.^D Intermediate dimensions shall be rounded off to the third decimal place in accordance with Practice **E29**.^E Wall thickness of tubes.^F Not required.

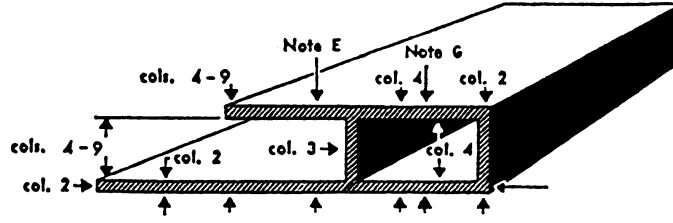
iTeh Standards
(<https://standards.iteh.ai>)
Document Preview

[ASTM B107/B107M-13](#)

<https://standards.iteh.ai/catalog/standards/sist/7365985d-cb71-46d8-8e62-d4cb93cb5af3/astm-b107-b107m-13>



TABLE 3 Cross-Sectional Tolerances for Bars, Rods, Profiles, and Wire^A



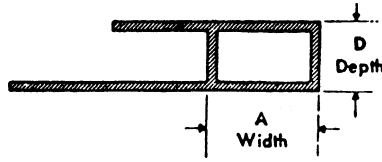
Tolerance^{B,C} in. ±

Specified Dimension, in.	Metal Dimensions			Space Dimensions				
	Allowable Deviation from Specified Dimension Where 75% or More of the Dimension is Metal ^D			Allowable Deviation from Specified Dimension Where More than 25% of the Dimension is Space ^{E,F}				
	All Except Those Covered By Column 3	Wall Thickness ^{G,H,I} Completely Enclosing Space 0.11 in. ² and Over (Eccentricity)	At Dimensioned Points 0.250–0.624 in. from Base of Leg	At Dimensioned Points 0.625–1.249 in. from Base of Leg	At Dimensioned Points 1.250–2.499 in. from Base of Leg	At Dimensioned Points 2.500–3.999 in. from Base of Leg	At Dimensioned Points 4.000–5.999 in. from Base of Leg	At Dimensioned Points 6.000–8.000 in. from Base of Leg
Col. 1	Col. 2	Col. 3	Col. 4	Col. 5	Col. 6	Col. 7	Col. 8	Col. 9
Circumscribing Circle Sizes Less than 10 in. in Dia								
0.124 and under	0.006	±10 % of specified dimension:	0.010	0.012
0.125–0.249	0.007	±0.060 max	0.012	0.014	0.016
0.250–0.499	0.008	±0.010 min	0.014	0.016	0.018	0.020
0.500–0.749	0.009		0.016	0.018	0.020	0.022
0.750–0.999	0.010		0.018	0.020	0.022	0.025	0.30	...
1.000–1.499	0.012		0.021	0.023	0.026	0.030	0.035	...
1.500–1.999	0.014		0.024	0.026	0.031	0.036	0.042	0.050
2.000–3.999	0.024		0.034	0.038	0.048	0.057	0.068	0.080
4.000–5.999	0.034		0.044	0.050	0.064	0.078	0.094	0.110
6.000–7.999	0.044		0.054	0.062	0.082	0.099	0.120	0.140
8.000–9.999	0.054		0.064	0.074	0.100	0.120	0.145	0.170
Circumscribing Circle Sizes 10 in. in Dia and Over								
0.124 and under	0.014	±15 % of specified dimension:	0.018	0.020
0.125–0.249	0.015	±0.090 max	0.019	0.022	0.028
0.250–0.499	0.016	±0.015 min	0.020	0.024	0.030	0.050
0.500–0.749	0.017		0.022	0.027	0.040	0.060
0.750–0.999	0.018		0.023	0.030	0.050	0.070	0.090	...
1.000–1.499	0.019		0.024	0.034	0.060	0.080	0.100	...
1.500–1.999	0.024		0.034	0.044	0.070	0.090	0.110	0.170
2.000–3.999	0.034		0.044	0.054	0.080	0.100	0.120	0.180
4.000–5.999	0.044		0.054	0.064	0.090	0.110	0.130	0.190
6.000–7.999	0.054		0.064	0.074	0.100	0.120	0.140	0.200
8.000–9.999	0.064		0.074	0.084	0.110	0.130	0.150	0.210
10.000–11.999	0.074		0.084	0.094	0.120	0.140	0.160	0.220
12.000–13.999	0.084		0.094	0.104	0.130	0.150	0.170	0.230
14.000–15.999	0.094		0.104	0.114	0.140	0.160	0.180	0.240
16.000–17.999	0.104		0.114	0.124	0.150	0.170	0.190	0.250
18.000–19.999	0.114		0.124	0.134	0.160	0.180	0.200	0.260
20.000–21.999	0.124		0.134	0.144	0.170	0.190	0.210	0.270
22.000–23.999	0.134		0.144	0.154	0.180	0.200	0.220	0.280

^A These tolerances are applicable to the average profile. Wider tolerances may be required for some profiles and closer tolerances may be possible for others.
^B The tolerances applicable to a dimension composed of two or more component dimensions is the sum of the tolerances of the component dimensions if all of the component dimensions are indicated.
^C When a tolerance is specified other than as an equal bilateral tolerance, the value of the standard tolerance is that which would apply to the mean of the maximum dimensions permissible under the tolerance.
^D These tolerances do not apply to space dimensions such as dimensions X and Z of the example even when Y is 75 % or more of X. For the tolerance applicable to dimensions X, use Col. 4, 5, 6, 7, 8 or 9, dependent on distance A and the circumscribing circle diameter.
^E At points less than 0.250 in. from base of leg the tolerances in Column 2 are applicable.



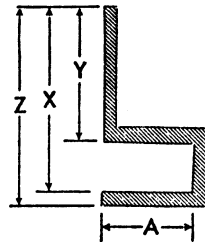
^F The following tolerances apply where the space is completely enclosed (hollow profiles): For the width (*A*) the tolerance is the value shown in Column 4 for the depth (*D*), the tolerance is the value shown in Column 4 for the width (*A*). In no case is the tolerance for either width or depth less than at the corners (Column 2, metal dimensions).



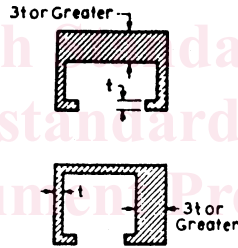
Example—Hollow profile having 1 by 3 in. rectangular outside dimensions and having a circumscribing circle diameter less than 10 in.: width tolerance is ± 0.024 in. and depth tolerance ± 0.034 in. (Tolerances at corners, Column 2, metal dimensions, are ± 0.024 in. for the width and ± 0.012 in. for the depth.)

^G Where dimensions specified are outside and inside, rather than wall thickness itself, the allowable deviation (eccentricity) given in Column 3 applies to mean wall thickness (mean wall thickness is the average of two wall thickness measurements taken at opposite sides of the void).

^H In the case of Class 1 Hollow Profiles the standard wall thickness tolerance for extruded round tube is applicable. (A Class 1 Hollow Profile is one whose void is round and 1 in. or more in diameter and whose weight is equally distributed on opposite sides of two or more equally spaced axes.)



^I Tolerance applicable to the wall thickness enclosing the void of hollow and semihollow profiles is subject to negotiation when the nominal thickness of one wall is three times or greater than that of the opposite wall.



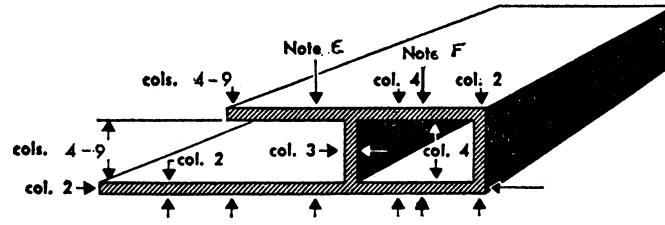
iTeh Standards
(<https://standards.iteh.ai>)
Document Preview

ASTM B107/B107M-13

<https://standards.iteh.ai/catalog/standards/sist/7365985d-cb71-46d8-8e62-d4cb93cb5af3/astm-b107-b107m-13>



TABLE 4 Cross Section Tolerances for Bars, Rods, Profiles, and Wire [Metric]^A



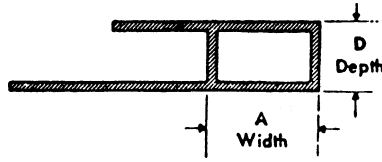
Tolerance^{B,C} mm ±

Specified Dimensions (mm)	Metal Dimensions				Space Dimensions				
	Allowable Deviation from Specified Dimension Where 75 % or More of the Dimension is Metal ^D				Allowable Deviation from Specified Dimension Where More than 25 % of the Dimension is Space ^{E,F}				
	All Except Those Covered by Column 3	Wall Thickness Completely Enclosing Space 7.0 mm and Over (Eccentricity) ^{G,H,I}	At Dimensioned Points Over 5 through 15 mm from Base of Leg	At Dimensioned Points Over 15 through 30 mm from Base of Leg	At Dimensioned Points Over 30 through 60 mm from Base of Leg	At Dimensioned Points Over 60 through 100 mm from Base of Leg	At Dimensioned Points Over 100 through 150 mm from Base of Leg	At Dimensioned Points Over 150 through 200 mm from Base of Leg	
Col. 1	Col. 2	Col. 3	Col. 4	Col. 5	Col. 6	Col. 7	Col. 8	Col. 9	
Over	Through	Circumscribing Circle Sizes Thru 250 mm in Diameter							
0	3.20	0.15	±10 % of specified dimensions: ±1.50 max ±0.25 min	0.25	0.30
3.20	6.30	0.18		0.30	0.36	0.41
6.30	12.50	0.20		0.36	0.41	0.46	0.50
12.50	20.00	0.23		0.41	0.46	0.50	0.56
20.00	25.00	0.25		0.46	0.50	0.56	0.64	0.76	...
25.00	40.00	0.30	0.54	0.58	0.66	0.76	0.88	...	
40.00	50.00	0.36	0.60	0.66	0.78	0.92	1.05	1.25	
50.00	100.00	0.60	0.86	0.96	1.20	1.45	1.70	2.05	
100.00	150.00	0.86	1.10	1.25	1.65	2.00	2.40	2.80	
150.00	200.00	1.10	1.35	1.55	2.10	2.50	3.05	3.55	
200.00	250.00	1.35	1.65	1.90	2.50	3.05	3.70	4.30	
Circumscribing Circle Sizes Over 250 mm in Diameter									
0	3.20	0.36	±15 % of specified dimensions: ±2.30 max ±0.38 min	0.46	0.50
3.20	6.30	0.38		0.48	0.56	0.72
6.30	12.50	0.41		0.50	0.60	0.76	1.25
12.50	20.00	0.43		0.56	0.68	1.00	1.50
20.00	25.00	0.46		0.58	0.76	1.25	1.80	2.30	...
25.00	40.00	0.48	0.60	0.86	1.50	2.05	2.55	...	
40.00	50.00	0.60	0.86	1.10	1.80	2.30	2.80	4.30	
50.00	100.00	0.86	1.10	1.35	2.05	2.55	3.05	4.55	
100.00	150.00	1.10	1.35	1.65	2.30	2.80	3.30	4.85	
150.00	200.00	1.35	1.65	1.90	2.55	3.05	3.55	5.10	
200.00	250.00	1.65	1.90	2.15	2.80	3.20	3.80	5.35	
250.00	300.00	1.90	2.15	2.40	3.05	3.55	4.05	5.60	
300.00	350.00	2.15	2.40	2.65	3.30	3.80	4.30	5.85	
350.00	400.00	2.40	2.65	2.90	3.55	4.05	4.55	6.10	
400.00	450.00	2.65	2.90	3.15	3.80	4.30	4.85	6.35	
450.00	500.00	2.90	3.15	3.40	4.05	4.55	5.10	6.60	
500.00	550.00	3.15	3.40	3.65	4.30	4.85	5.25	6.85	
550.00	600.00	3.40	3.65	3.90	4.55	5.10	5.60	7.10	

^A These tolerances are applicable to the average profile. Wider tolerances may be required for some profiles and closer tolerances may be possible for others.
^B The tolerances applicable to a dimension composed of two or more component dimensions is the sum of the tolerances of the component dimensions if all of the component dimensions are indicated.
^C When a tolerance is specified other than as an equal bilateral tolerance, the value of the standard tolerance is that which would apply to the mean of the maximum dimensions permissible under the tolerance.
^D These tolerances do not apply to space dimensions such as dimensions X and Z of the example even when Y is 75 % or more of X. For the tolerance applicable to dimensions X, use columns 4, 5, 6, 7, 8 or 9, dependent on distance A and the circumscribing circle diameter.
^E At points less than 6.30 mm in from base of leg the tolerances in Column 2 are applicable.



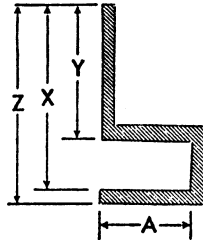
^F The following tolerances apply where the space is completely enclosed (hollow profiles): For the width (A) the tolerance is the value shown in Column 4 for the depth (D). For the depth (D), the tolerance is the value shown in Column 4 for the width (A). In no case is the tolerance for either width or depth less than at the corners (Column 2, metal dimensions).



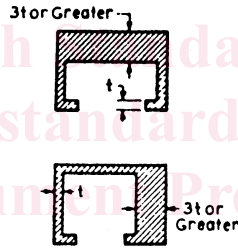
Example—Hollow profile having 25 mm by 75 mm rectangular outside dimensions and having a circumscribing circle diameter less than 250 mm: width tolerance is ± 0.60 mm and depth tolerance ± 1 mm. Tolerances at corners, Column 2, metal dimensions, are ± 0.60 mm for the width and ± 0.25 mm for the depth.)

^G Where dimensions specified are outside and inside, rather than wall thickness itself, the allowable deviation (eccentricity) given in Column 3 applies to mean wall thickness (mean wall thickness is the average of two wall thickness measurements taken at opposite sides of the void).

^H In the case of Class 1 Hollow Profiles the standard wall thickness tolerance for extruded round tube is applicable. (A Class 1 Hollow Profile is one whose void is round and 25 mm or more in diameter and whose weight is equally distributed on opposite sides of two or more equally spaced axes.)



^I Tolerance applicable to the wall thickness enclosing the void of hollow and semihollow profiles is subject to negotiation when the nominal thickness of one wall is three times or greater than that of the opposite wall.



iTeh Standards
(<https://standards.iteh.ai>)
Document Preview

ASTM B107/B107M-13

<https://standards.iteh.ai/catalog/standards/sist/7365985d-cb71-46d8-8e62-d4cb93cb5af3/astm-b107-b107m-13>