
INTERNATIONAL STANDARD



3371

INTERNATIONAL ORGANIZATION FOR STANDARDIZATION • МЕЖДУНАРОДНАЯ ОРГАНИЗАЦИЯ ПО СТАНДАРТИЗАЦИИ • ORGANISATION INTERNATIONALE DE NORMALISATION

Modular units for machine tool construction – Rotary tables and multi-sided centre bases for rotary tables

Éléments standard pour la construction des machines-outils – Plateaux tournants porte-pièces et bâtis centraux multi-côtés pour plateaux tournants porte-pièces

First edition – 1975-09-01

ITeh STANDARD PREVIEW
(standards.iteh.ai)

[ISO 3371:1975](https://standards.iteh.ai/catalog/standards/sist/596f8da4-5a33-4fd6-b36d-11cc21217b59/iso-3371-1975)

<https://standards.iteh.ai/catalog/standards/sist/596f8da4-5a33-4fd6-b36d-11cc21217b59/iso-3371-1975>

UDC 621.9-112

Ref. No. ISO 3371-1975 (E)

Descriptors : machine tools, modular structures, rotary tables, frames, specifications, dimensions.

FOREWORD

ISO (the International Organization for Standardization) is a worldwide federation of national standards institutes (ISO Member Bodies). The work of developing International Standards is carried out through ISO Technical Committees. Every Member Body interested in a subject for which a Technical Committee has been set up has the right to be represented on that Committee. International organizations, governmental and non-governmental, in liaison with ISO, also take part in the work.

Draft International Standards adopted by the Technical Committees are circulated to the Member Bodies for approval before their acceptance as International Standards by the ISO Council.

International Standard ISO 3371 was drawn up by Technical Committee ISO/TC 39, *Machine tools*, and circulated to the Member Bodies in January 1974.

It has been approved by the Member Bodies of the following countries :

Australia	Hungary	Spain
Austria	India	Sweden
Belgium	Ireland	Thailand
Bulgaria	Italy	Turkey
Czechoslovakia	Japan	U.S.S.R.
Egypt, Arab Rep. of	Romania	Yugoslavia
France	South Africa, Rep. of	

The Member Bodies of the following countries expressed disapproval of the document on technical grounds :

Germany
United Kingdom
U.S.A.

Modular units for machine tool construction – Rotary tables and multi-sided centre bases for rotary tables

iTeh STANDARD PREVIEW
(standards.iteh.ai)

1 SCOPE AND FIELD OF APPLICATION

This International Standard specifies envelope dimensions for rotary tables and multi-sided centre bases for rotary tables used in special purpose machines constructed from modular units.

2 SPECIFICATIONS

2.1 Dimensions of multi-sided centre bases

Dimensions shall be in accordance with table 1.

2.2 Dimensions of workpiece rotary tables

Dimensions shall be in accordance with table 2.

2.3 Location of multi-sided centre bases

Location to wing bases may be by means of tenon and slot or by dowels.

3 MULTI-SIDED CENTRE BASES FOR ROTARY TABLES

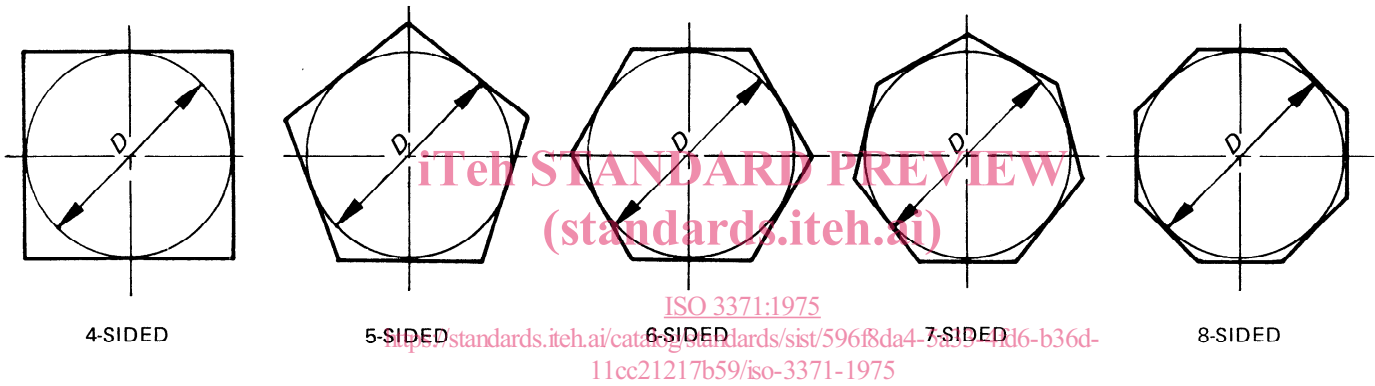
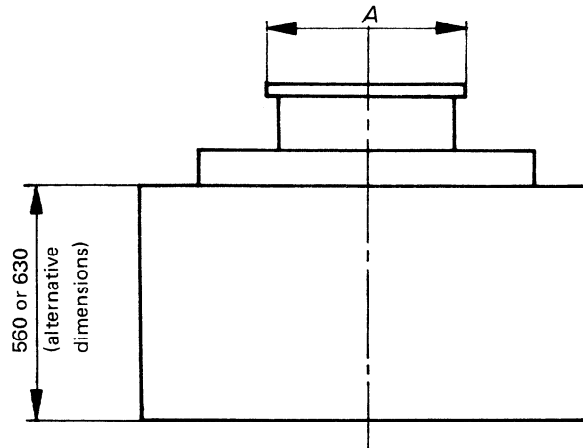


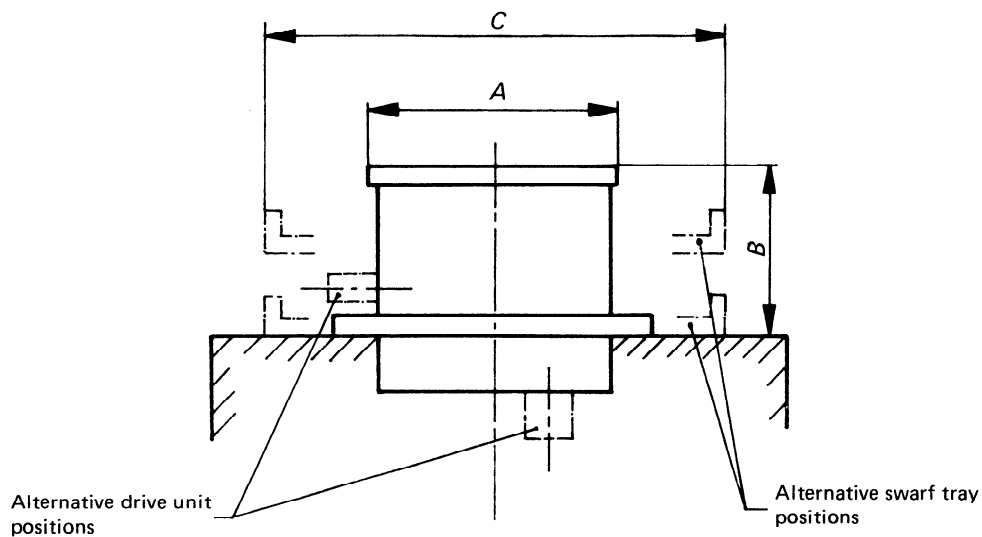
TABLE 1 – Dimensions of centre bases

Dimensions in millimetres

Table diameter <i>A</i>	Diameter of inscribed circle <i>D</i>
320	680
400	760* 840
500	860* 940
630	1 070* 1 170
800	1 240* 1 340
1 000	1 440* 1 540
1 250	1 690* 1 790
1 600	2 140
2 000	2 540

* Avoid these values, if possible.

4 ROTARY TABLES



iTeh STANDARD PREVIEW
 (standards.iteh.ai)

TABLE 2 – Dimensions of rotary tables

Dimensions in millimetres

Table diameter A	ISO 3371:1975 Height		Diameter of swarf tray C
	B		
320	160	250	640
400	160	250	720* 800
500	160	250	820* 900
630		250	400
800		250	400
1 000		250	400
1 250		250	400
1 600		250	400
2 000		250	400

* Avoid these values, if possible.

iTeh STANDARD PREVIEW
(standards.iteh.ai)

This page intentionally left blank

[ISO 3371:1975](#)

<https://standards.iteh.ai/catalog/standards/sist/596f8da4-5a33-4fd6-b36d-11cc21217b59/iso-3371-1975>

iTeh STANDARD PREVIEW
(standards.iteh.ai)

This page intentionally left blank

[ISO 3371:1975](#)

<https://standards.iteh.ai/catalog/standards/sist/596f8da4-5a33-4fd6-b36d-11cc21217b59/iso-3371-1975>

iTeh STANDARD PREVIEW
(standards.iteh.ai)

This page intentionally left blank

[ISO 3371:1975](#)

<https://standards.iteh.ai/catalog/standards/sist/596f8da4-5a33-4fd6-b36d-11cc21217b59/iso-3371-1975>