



Designation: **D5587—08 D5587 – 14**

Standard Test Method for Tearing Strength of Fabrics by Trapezoid Procedure¹

This standard is issued under the fixed designation D5587; the number immediately following the designation indicates the year of original adoption or, in the case of revision, the year of last revision. A number in parentheses indicates the year of last reappraisal. A superscript epsilon (ϵ) indicates an editorial change since the last revision or reappraisal.

1. Scope

1.1 This test method covers the measurement of the tearing strength of textile fabrics by the trapezoid procedure using a recording constant-rate-of-extension-type (CRE) tensile testing machine.

1.1.1 The CRE-type tensile testing machine has become the preferred test apparatus for determining trapezoid tearing strength. It is recognized that some constant-rate-of-traverse-type (CRT) tensile testing machines continue to be used. Consequently, these test instruments may be used when agreed upon between the purchaser and the supplier. The conditions for use of the CRT-type tensile tester are included in [Appendix X1](#).

1.2 This test method applies to most fabrics including woven fabrics, air bag fabrics, blankets, napped fabrics, knitted fabrics, layered fabrics, pile, and pile nonwoven fabrics. The fabrics may be untreated, heavily sized, coated, resin-treated, or otherwise treated. Instructions are provided for testing specimens with or without wetting.

1.3 Tearing strength, as measured in this test method, requires that the tear be initiated before testing. The reported value obtained is not directly related to the force required to initiate or start a tear.

1.4 Two calculations for trapezoid tearing strength are provided: the single-peak force and the average of five highest peak forces.

1.5 The values stated in SI units are to be regarded as the standard. The values stated in inch-pound units may be approximate.

1.6 *This standard does not purport to address all of the safety concerns, if any, associated with its use. It is the responsibility of the user of this standard to establish appropriate safety and health practices and determine the applicability of regulatory limitations prior to use.*

2. Referenced Documents

2.1 *ASTM Standards:*²

[D76 Specification for Tensile Testing Machines for Textiles](#)

[D123 Terminology Relating to Textiles](#)

[D629 Test Methods for Quantitative Analysis of Textiles](#)

[D1776 Practice for Conditioning and Testing Textiles](#)

[D2904 Practice for Interlaboratory Testing of a Textile Test Method that Produces Normally Distributed Data](#) (Withdrawn 2008)³

[D2906 Practice for Statements on Precision and Bias for Textiles](#) (Withdrawn 2008)³

[D4850 Terminology Relating to Fabrics and Fabric Test Methods](#)

3. Terminology

3.1 For all terminology relating to D13.59, Fabric Test methods, General, refer to Terminology [D4850](#).

3.1.1 The following terms are relevant to this ~~standard: fabric~~, standard: fabric, in textiles; peak force, in tear testing of fabrics; tearing force, in fabric; tearing strength, in ~~fabrics:fabrics~~; yarn distortion (see [Fig. 1](#)).

3.2 For all other terms related to textiles, refer to Terminology [D123](#).

¹ This test method is under the jurisdiction of ASTM Committee [D13](#) on Textiles and is the direct responsibility of Subcommittee [D13.60](#) on Fabric Test Methods, Specific. Current edition approved ~~Aug. 1, 2008~~ Feb. 15, 2014. Published ~~October 2008~~ March 2014. Originally approved in 1996. Last previous edition approved in ~~2007~~ 2008 as [D5587—07a](#) [D5587 – 08](#).¹ DOI: [10.1520/D5587-08-10.1520/D5587-14](#).

² For referenced ASTM standards, visit the ASTM website, [www.astm.org](#), or contact ASTM Customer Service at [service@astm.org](#). For *Annual Book of ASTM Standards* volume information, refer to the standard's Document Summary page on the ASTM website.

³ The last approved version of this historical standard is referenced on [www.astm.org](#).

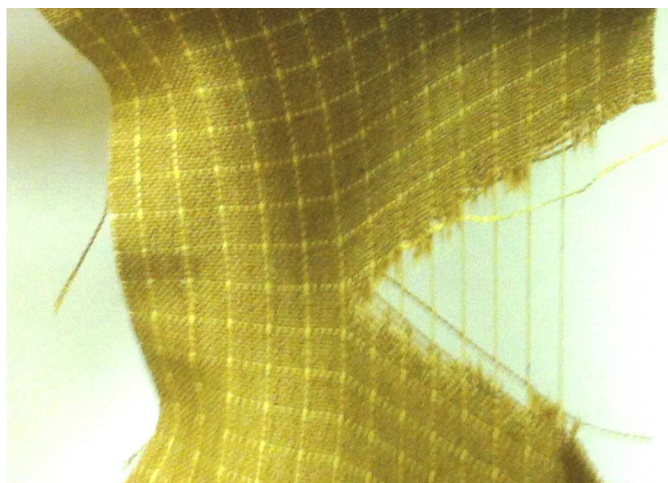


FIG. 1 – Templates for Cutting and Marking Trapezoid Test Specimens Photograph Showing Yarn Distortion in a Modern Technical Type Fabric

4. Summary of Test Method

4.1 An outline of an isosceles trapezoid is marked on a rectangular specimen (see Fig. 42). The specimen is slit at the center of the smallest base of the trapezoid to start the tear. The nonparallel sides of the marked trapezoid are clamped in parallel jawsclamps of a tensile testing machine. The separation of the jawsclamps is increased continuously to apply a force to propagate the tear across the specimen. At the same time, the force developed is recorded. The force to continue the tear is calculated from autographic chart recorders or microprocessor data collection systems.

5. Significance and Use

5.1 This test method is considered satisfactory for acceptance testing of commercial shipments because current estimates of between-laboratory precision are acceptable, and this test method is used extensively in the trade for acceptance testing.

5.2 If there are differences of practical significance between test results for two laboratories (or more), comparative test should be performed to determine if there is a statistical bias between them, using competent statistical assistance. As a minimum, use the samples for such a comparative test that are as homogeneous as possible, drawn from the same lot of material as the samples that resulted in disparate results during initial testing. Randomly assign the samples in equal numbers to each laboratory. The test results from the laboratories involved should be compared using a statistical test for unpaired data, at a probability level chosen prior to the testing series. If bias is found, either its cause must be found and corrected, or future test results for that material must be adjusted in consideration of the known bias.

5.3 The trapezoid tear produces tension along a reasonably defined course such that the tear propagates across the width of the specimen. It is useful for estimating the relative tear resistance of different fabrics or different directions in the same fabric.

5.4 Depending on the nature of the specimen, the data recording devices will show the tearing force in the form of a peak or peaks. The highest peaks appear to reflect the strength of the yarn components, individually or in combination, needed to stop a tear in fabrics of the same construction. The valleys recorded between the peaks have no specific significance. The minimum tearing force, however, is indicated to be above the lowest valleys.

5.5 Most textile fabrics can be tested by this test method. Some modification of clamping techniques may be necessary for a given fabric, depending upon its structure. Strong fabrics or fabrics made from glass fibers require special adaptation to prevent them from slipping in the clamps or being damaged as a result of being gripped in the clamps. In some cases, due to fabric constructions, individual yarns may not rupture but show a high peak and yarn distortion within the test specimen. Wherever possible, this shall be prevented. If you have tried all of these steps and yarn distortion still occurs, this must be included in the report.

5.6 The CRE-type is the preferred tensile testing machine. This test method allows the use of the CRT-type tensile machine when agreed upon between the purchaser and the supplier. There may be no overall correlation, however, between the results obtained with the CRT-type machine and the CRE-type machine. Consequently, these two tensile testers cannot be used interchangeably unless the degree of quantitative correlation has been established between the purchaser and the supplier. In any event, the CRE-type machine shall prevail.

TABLE 1 Number of Rolls or Pieces of Fabric in the Lot Sample

Number of Rolls or Pieces in Lot, Inclusive	Number of Rolls or Pieces in Lot Sample
1 to 3	all
4 to 24	4
25 to 50	5
over 50	10 % to a maximum of 10 rolls or pieces

7.3 *Test Specimens*—From each laboratory sampling unit, take five specimens from the machine direction and five specimens from the cross-machine direction, for each test condition described in 9.1 and 9.2, as applicable to a material specification or contract order.

7.3.1 *Direction of Test*—Consider the long direction as the direction of test.

7.3.2 *Cutting Test Specimens*—Take the specimens to be used for the measurement of machine direction with the longer dimension parallel to the machine direction. Take the specimens to be used for the measurement of the cross-machine direction with the longer dimension parallel to the cross-machine direction. When specimens are to be tested wet, take the specimens from areas adjacent to the dry test specimens. Label to maintain specimen identity.

7.3.2.1 In cutting the woven fabric specimens, take care to align the yarns running in the short direction parallel with the die such that when the slit is cut, the subsequent tear will take place between these yarns and not across them. This precaution is most important when testing bowed fabrics.

7.3.2.2 Cut specimens representing a broad distribution across the width and length, preferably along the diagonal of the laboratory sample, and no nearer the edge than one tenth its width. Ensure specimens are free of folds, creases, or wrinkles. Avoid getting oil, water, grease, and so forth, on the specimens when handling.

7.3.2.3 Use the cutting die or template described in 6.3 and shown in Fig. 12(a). Mark each specimen with an isosceles trapezoid template (see Fig. 1, Fig. 2). Make a preliminary cut 15 mm (0.625 in.) long at the center of the 25-mm (1-in.) edge, as shown in Figs. 1 and 2 Fig. 2.

NOTE 2—Tests were carried out in 2007 to evaluate whether the specimen size and clamps separation could be increased to facilitate easier loading of the specimen. It was found that this caused a difference in the final results depending on the fabric type. Therefore, it is not possible to increase the specimen size.

8. Preparation of Test Apparatus and Calibration

8.1 Set the distance between the clamps at the start of the test at 25 ± 1 mm (1 ± 0.05 in.).

8.2 Select the full-scale force range of the testing machine such that the maximum force occurs between 15 and 85 % of full-scale force.

8.3 Set the testing speed to 300 ± 10 mm (12 ± 0.5 in./min).

8.4 Verify calibration of the tensile testing machine as specified in the manufacturer's instructions and Specification D76.

8.5 When using microprocessor automatic data gathering systems, set the appropriate parameters as specified in the manufacturer's instructions.

9. Conditioning

9.1 *Condition 1, for Standard Testing:*

9.1.1 Precondition the specimens by bringing them to approximate moisture equilibrium in the standard atmosphere for preconditioning textiles as specified in Practice D1776, unless otherwise specified in a material specification or contract order. In addition to conditioning, fabric with stretch characteristics must be allowed to relax for a period of 24 h prior to sample preparation.

9.1.2 After preconditioning, bring the test specimens to moisture equilibrium for testing in the standard atmosphere for testing textiles as specified in Practice D1776 or, if applicable, in the specified atmosphere in which the testing is to be performed, unless otherwise directed in a material specification or contract order.

9.2 *Condition 2, for Wet Specimen Testing:*

9.2.1 Submerge the specimen in a container of distilled or deionized water at ambient temperature until thoroughly soaked.

9.2.1.1 The time of immersion must be sufficient to wet out the specimens, as indicated by no significant change in tearing force followed by longer periods of immersion. For most fabrics, this time period will be approximately 1 h. For fabrics not readily wet out with water, such as those treated with water-repellent or water-resistant materials, add a 0.1% solution of a nonionic wetting agent to the water bath.

9.2.2 When a desizing treatment is to be performed prior to wet testing, use one of the treatments specified in Test Methods D629. If desized specimens are to be tested wet, follow the steps in and 9.2.1.1. If desized specimens are to be tested in the conditioned state, follow the steps in 9.1.1 and 9.1.2.