

ISO

INTERNATIONAL ORGANIZATION FOR STANDARDIZATION

ISO RECOMMENDATION R 573

DOBBY LAGS AND PEGS IN WOOD,
METAL OR OTHER SUITABLE MATERIAL

1st EDITION

April 1967

COPYRIGHT RESERVED

The copyright of ISO Recommendations and ISO Standards belongs to ISO Member Bodies. Reproduction of these documents, in any country, may be authorized therefore only by the national standards organization of that country, being a member of ISO.

For each individual country the only valid standard is the national standard of that country.

Printed in Switzerland

Also issued in French and Russian. Copies to be obtained through the national standards organizations.

BRIEF HISTORY

The ISO Recommendation R 573, *Dobby Lags and Pegs in Wood, Metal or Other Suitable Material*, was drawn up by Technical Committee ISO/TC 72, *Textile Machinery and Accessories*, the Secretariat of which is held by the Association Suisse de Normalisation (SNV).

Work on this question by the Technical Committee began in 1950 and led, in 1963, to the adoption of a Draft ISO Recommendation.

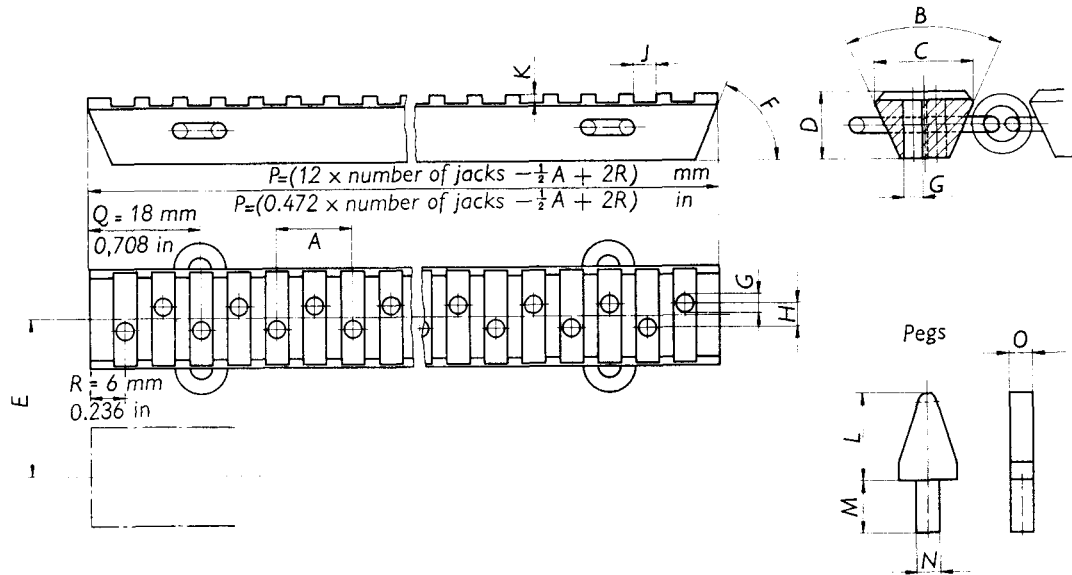
In September 1964, this Draft ISO Recommendation (No. 710) was circulated to all the ISO Member Bodies for enquiry. It was approved, subject to a few modifications of an editorial nature, by the following Member Bodies:

Chile	India	Switzerland
Czechoslovakia	Korea, Rep. of	Turkey
France	Netherlands	U.A.R.
Germany	Poland	United Kingdom
Greece	Spain	U.S.S.R.

No Member Body opposed the approval of the Draft.

The Draft ISO Recommendation was then submitted by correspondence to the ISO Council, which decided, in April 1967, to accept it as an ISO RECOMMENDATION.

DOBBY LAGS AND PEGS IN WOOD, METAL OR OTHER SUITABLE MATERIAL



Designations		millimetres	inches
A	Pitch	11.94 to 12.0	0.470 to 0.472
B	Included angle in cross-section of lag	46 to 48°	46 to 48°
C	Width at top of lag	17.0 to 17.5	0.67 to 0.69
D	Thickness	11.1 to 12.0	0.43 to 0.47
E	Distance between centres of lags	28.0 $\begin{smallmatrix} +0.3 \\ -0.2 \end{smallmatrix}$	1.10 $\begin{smallmatrix} +0.12 \\ -0.08 \end{smallmatrix}$
F	End angle of lag with base	66 to 70°	66 to 70°
G	Peg hole diameter	3.2 to 3.3	0.126 to 0.130
H	Distance between the two rows of peg holes	3.0 to 3.3	0.118 to 0.130
J	Width of groove	3.8 to 4.0	0.150 to 0.157
K	Depth of groove	1.0 to 1.6	0.039 to 0.042
L	Lift of peg	15.0 to 16.0	0.59 to 0.63
M	Shank of peg: length	8.7 to 9.0	0.343 to 0.354
N	Shank of peg: diameter	3.4 to 3.5	0.134 to 0.138
O	Thickness of peg	3.4 to 3.6	0.134 to 0.142
P	Overall length of lag		
Q	Distance from centre of first and last staples to end of lag		
R	Distance from first and last peg holes to end of lag		
Number of jacks		16 — 20 — 24 — 25 — 28	