



Standard Test Method for Performance of Upright Overfired Broilers¹

This standard is issued under the fixed designation F2237; the number immediately following the designation indicates the year of original adoption or, in the case of revision, the year of last revision. A number in parentheses indicates the year of last reapproval. A superscript epsilon (ϵ) indicates an editorial change since the last revision or reapproval.

1. Scope

1.1 This test method evaluates the energy consumption and cooking performance of overfired broilers. The food service operator can use this evaluation to select an overfired broiler and understand its performance and energy consumption.

1.2 This test method is applicable to gas and electric upright overfired broilers having input rates greater than 60,000 Btu/h (gas overfired broilers) or 10kW (electric overfired broilers).

1.3 The overfired broiler can be evaluated with respect to the following (where applicable):

- 1.3.1 Energy input rate (see 10.2),
- 1.3.2 Temperature uniformity of the broiler cavity (see 10.3),
- 1.3.3 Preheat energy consumption and time (see 10.4),
- 1.3.4 Pilot energy rate (if applicable) (see 10.5),
- 1.3.5 Idle energy rate (see 10.6), and
- 1.3.6 Cooking energy efficiency and production capacity (see 10.7).

1.4 The values stated in inch-pound units are to be regarded as standard. The values given in parentheses are mathematical conversions to SI units that are provided for information only and are not considered standard.

1.5 *This test method may involve hazardous materials, operations, and equipment. This standard does not purport to address all of the safety concerns, if any, associated with its use. It is the responsibility of the user of this standard to establish appropriate safety and health practices and determine the applicability of regulatory limitations prior to use.*

2. Referenced Documents

2.1 *ASTM Standards:*²

[A36/A36M Specification for Carbon Structural Steel](#)

[D3588 Practice for Calculating Heat Value, Compressibility Factor, and Relative Density of Gaseous Fuels](#)

2.2 *AOAC Document:*

[AOAC Official Action 950.46 Air Drying to Determine Moisture Content of Meat and Meat Products](#)³

2.3 *ASHRAE Standard:*

[ASHRAE Handbook of Fundamentals “Thermal and Related Properties of Food and Food Materials,” Chapter 30, Table 1, 1989](#)⁴

2.4 *ANSI Standard:*

[ANSI Z83.11 Gas Food Service Equipment](#)⁵

3. Terminology

3.1 *Definitions:*

3.1.1 *broiler cavity, n*—that portion of the overfired broiler in which food products are heated or cooked.

¹ This test method is under the jurisdiction of ASTM Committee F26 on Food Service Equipment and is the direct responsibility of Subcommittee F26.06 on Productivity and Energy Protocol.

Current edition approved Oct. 1, 2008; March 1, 2015. Published February 2009; May 2015. Originally approved in 2003. Last previous edition approved in 2003 as F2237 – 03; F2237 – 03 (2008). DOI: 10.1520/F2237-03R08; 10.1520/F2237-03R15.

² For referenced ASTM standards, visit the ASTM website, www.astm.org, or contact ASTM Customer Service at service@astm.org. For *Annual Book of ASTM Standards* volume information, refer to the standard's Document Summary page on the ASTM website.

³ Available from Association of Official Analytical Chemists, 1111 N. 19th Street, Arlington, VA 22209.

⁴ Available from American Society of Heating, Refrigerating, and Air-Conditioning Engineers, Inc. (ASHRAE), 1791 Tullie Circle, NE, Atlanta, GA 30329.

⁵ Available from American National Standards Institute (ANSI), 25 W. 43rd St., 4th Floor, New York, NY 10036.

3.1.2 *cooking energy efficiency, n*—quantity of energy imparted to the specified food product, expressed as a percentage of energy consumed by the overfired broiler during the cooking event.

3.1.3 *cooking energy rate, n*—average rate of energy consumption (Btu/h or kW) during the cooking energy efficiency tests.

3.1.4 *grate, broiler grate, n*—the platform on which food is placed while cooking in an overfired broiler.

3.1.5 *idle energy rate, n*—the overfired broiler’s rate of energy consumption (kW or Btu/h), when empty, required to maintain the broiler’s operating temperature while not cooking.

3.1.6 *overfired broiler, n*—an appliance with a high temperature radiant heat source above a heavy duty, sliding grate for cooking food, characterized by an open front cooking cavity and having an input rate greater than 60 000 Btu/h or 10kW.

NOTE 1—The upright overfired broiler is distinguished from the salamander and the cheese melter by its heavy duty, stand-alone construction and high energy input rate (see Fig. 1).

3.1.7 *pilot energy rate, n*—rate of energy consumption (Btu/h) by an overfired broiler’s continuous pilot (if applicable).

3.1.8 *preheat energy, n*—amount of energy consumed (Btu or kWh), by the overfired broiler while preheating its cavity from ambient temperature to the calibrated control set point.

3.1.9 *preheat time, n*—time (min.) required for the overfired broiler cavity to preheat from ambient temperature to the calibrated control set point.

3.1.10 *production capacity, n*—maximum rate (lb/h) at which an overfired broiler can bring the specified food product to a specified “cooked” condition.

3.1.11 *uncertainty, n*—measure of systematic and precision errors in specified instrumentation or measure of repeatability of a reported test result.

4. Summary of Test Method

4.1 The overfired broiler is connected to the appropriate metered energy source, and the energy input rate is determined to confirm that the appliance is operating within 5 % of the nameplate energy input rate.

4.2 The broiler grate is covered with 5-in. (127-mm) diameter steel disks and the overfired broiler’s controls are set such that the broiling area does not exceed a maximum temperature of 800°F (315°C). The temperature uniformity of the broiling area is determined by monitoring thermocoupled steel disks placed on the broiler grate.

4.3 With the controls set such that the broiling area does not exceed 800°F (315°C), the amount of energy and time required to preheat the broiling area to 700°F (260°C) is determined.

4.4 The pilot energy rate is determined, when applicable, for gas overfired broilers.

4.5 Idle energy rate is determined while maintaining the broiler cavity at its operating temperature while not cooking.

4.6 With the controls set such that the broiling area does not exceed 800°F (315°C), the overfired broiler is used to cook 5-oz boneless, skinless, chicken breasts to an internal temperature of 170°F. Cooking energy efficiency is determined for light and heavy loading conditions.

4.7 Production capacity is determined for the heavy loading scenario.

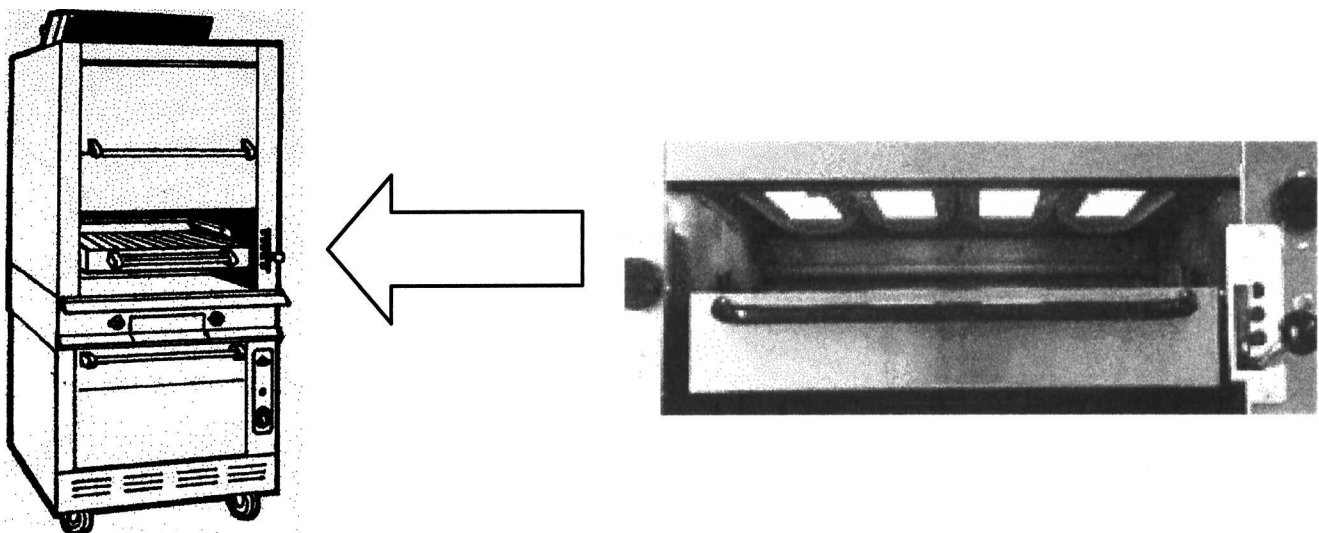


FIG. 1 Upright Overfired Broiler Construction

5. Significance and Use

5.1 The energy input rate test is used to confirm that the overfired broiler is operating properly prior to further testing.

5.2 Temperature uniformity of the broiler cavity may be used by food service operators to select an overfired broiler with the desired temperature gradients.

5.3 Preheat energy and time can be useful to food service operators to manage energy demands and to know how quickly the overfired broiler can be ready for operation.

5.4 Idle energy rate and pilot energy rate can be used to estimate energy consumption during non-cooking periods.

5.5 Cooking energy efficiency is a precise indicator of overfired broiler energy performance while cooking a typical food product under various loading conditions. If energy performance information is desired using a food product other than the specified test food, the test method could be adapted and applied. Energy performance information allows an end user to better understand the operating characteristics of an overfired broiler.

5.6 Production capacity can help an end user to better understand the production capabilities of an overfired broiler as it is used to cook a typical food product, helping with specification of the proper size and quantity of equipment. If production information is desired using a food product other than the specified test food, the test method could be adapted and applied.

6. Apparatus

6.1 *Analytical Balance Scale*, for measuring weights up to 20 lb, with a resolution of 0.01 lb, and an uncertainty of 0.01 lb.

6.2 *Barometer*, for measuring absolute atmospheric pressure, to be used for adjustment of measured natural gas volume to standard conditions. Shall have a resolution of 0.2 in. Hg and an uncertainty of 0.2 in. Hg.

6.3 *Canopy Exhaust Hood*, 4 ft in depth, wall-mounted with the lower edge of the hood 6 ft, 6 in. from the floor and with the capacity to operate at a nominal exhaust ventilation rate of 300 cfm per linear foot of active hood length. This hood shall extend a minimum of 6 in. past both sides and the front of the cooking appliance and shall not incorporate side curtains or partitions.

6.4 *Convection Drying Oven*, with temperature controlled at 215 to 220°F (101 to 104°C), used to determine moisture content of both the raw and cooked food product.

6.5 *Data Acquisition System*, for measuring energy and temperatures, capable of multiple-temperature displays updating at least every 5 s.

6.6 *Gas Meter*, for measuring the gas consumption of an overfired broiler, shall be a positive displacement type with a resolution of at least 0.01 ft³ and a maximum uncertainty no greater than 1 % of the measured value for any demand greater than 2.2 ft³/h. If the meter is used for measuring the gas consumed by the pilot lights, it shall have a resolution of at least 0.01 ft³ and a maximum uncertainty no greater than 2 % of the measured value.

6.7 *Pressure Gage*, for monitoring natural gas pressure. Shall have a range of zero to 10 in. water, a resolution of 0.5 in. water, and a maximum uncertainty of 1 % of the measured value.

6.8 *Steel Disks*, composed of structural-grade carbon steel in accordance with Specification **A36/A36M**, free of rust or corrosion, 5-in. (127 mm) diameter, and ¼-in. (6.3-mm) thick. The disks shall be flat to within 0.010 in. (0.25 mm) over the diameter.

6.9 *Stop Watch*, with a 1-s resolution.

6.10 *Strain Gage Welder*, capable of welding thermocouples to steel.

6.11 *Temperature Sensor*, for measuring natural gas temperature in the range of 50 to 100°F (10 to 38°C) with an uncertainty of ±1°F (0.56°C).

6.12 *Thermocouple(s)*, fiberglass insulated, 24 gage, Type K thermocouple wire, peened flat at the exposed ends and spot welded to the center of the steel disk surfaces with a strain gage welder.

6.13 *Thermocouple(s)*, fiberglass insulated, 24 gage, Type K thermocouple wire, welded and calibrated, for use in determining the temperature of the chicken breasts.

6.14 *Watt-Hour Meter*, for measuring the electrical energy consumption of an overfired broiler, shall have a resolution of at least 10 Wh and a maximum uncertainty no greater than 1.5 % of the measured value for any demand greater than 100 W. For any demand less than 100 W, the meter shall have a resolution of at least 10 Wh and a maximum uncertainty no greater than 10 %.

7. Reagents and Materials

7.1 *Aluminum Sheet Pans*, measuring 18 by 26 by 1 in. (457 by 660 by 25 mm), for use in packaging chicken breasts.

7.2 *Chicken Breasts*, shall be nominal 5-oz frozen, boneless, skinless, butterfly cut, chicken breasts (whole meat, not fabricated). When thawed and drained, each chicken breast shall weigh 4.8 ± 0.2 oz.

7.3 *Drip Rack*, sized to fit 18 by 26 by 1 in. (457 by 660 by 25 mm) aluminum sheet pans, for packaging chicken breasts.

7.4 *Fish Hooks*, size 1, for use in attaching thermocouples to chicken breasts.

7.5 *Plastic Wrap*, commercial grade, 18 in. (457 mm) wide, for use in packaging chicken breasts.

7.6 *Tongs*, commercial grade, metal construction, for handling chicken breasts.

8. Sampling and Test Units

8.1 *Overfired Broiler*—Select a representative production model for performance testing.

9. Preparation of Apparatus

9.1 Install the appliance according to the manufacturer's instructions under a canopy exhaust hood. Position the overfired broiler so that a minimum of 6 in. is maintained between the edge of the hood and the vertical plane of the front and sides of the appliance. In addition, both sides of the overfired broiler shall be a minimum of 3 ft from any side wall, side partition, or other operating appliance. The exhaust ventilation rate shall be 300 cfm per linear foot of active hood length. The associated heating or cooling system shall be capable of maintaining an ambient temperature of $75 \pm 5^\circ\text{F}$ within the testing environment when the exhaust ventilation system is operating.

NOTE 2—The ambient temperature requirements are designed to simulate real world kitchen temperatures and are meant to provide a reasonable guideline for the temperature requirements during testing. If a facility is not able to maintain the required temperatures, then it is reasonable to expect that the application of the procedure may deviate from the specified requirements (if it cannot be avoided) as long as those deviations are noted on the Results Reporting Sheets.

9.2 Connect the overfired broiler to a calibrated energy test meter. For gas installations, install a pressure regulator downstream from the meter to maintain a constant pressure of gas for all tests. Install instrumentation to record both the pressure and temperature of the gas supplied to the overfired broiler and the barometric pressure during each test so that the measured gas flow can be corrected to standard conditions. For electric installations, a voltage regulator may be required during tests if the voltage supply is not within $\pm 2.5\%$ of the manufacturer's nameplate voltage.

9.3 For an electric overfired broiler, confirm (while the overfired broiler elements are energized) that the supply voltage is within $\pm 2.5\%$ of the operating voltage specified by the manufacturer. Record the test voltage for each test.

NOTE 3—It is the intent of the test procedure herein to evaluate the performance of an overfired broiler at its rated gas pressure or electric voltage. If an electric unit is rated dual voltage (that is, designed to operate at either 208 or 240 V with no change in components), the voltage selected by the manufacturer or tester, or both, shall be reported. If an overfired broiler is designed to operate at two voltages without a change in the resistance of the heating elements, the performance of the unit (for example, the preheat time) may differ at the two voltages.

9.4 For a gas overfired broiler, adjust (during maximum energy input) the gas supply pressure downstream from the appliance's pressure regulator to within $\pm 2.5\%$ of the operating manifold pressure specified by the manufacturer. Make adjustments to the appliance following the manufacturer's recommendations for optimizing combustion. Proper combustion may be verified by measuring air-free CO in accordance with ANSI Z83.11.

10. Procedure

10.1 *General*:

10.1.1 For gas overfired broilers, record the following for each test run:

10.1.1.1 Higher heating value,

10.1.1.2 Standard gas pressure and temperature used to correct measured gas volume to standard conditions,

10.1.1.3 Measured gas temperature,

10.1.1.4 Measured gas pressure,

10.1.1.5 Barometric pressure,

10.1.1.6 Energy input rate during or immediately prior to test (for example, during the preheat for that day's testing), and

10.1.1.7 Ambient temperature.

NOTE 4—Using a calorimeter or gas chromatograph in accordance with accepted laboratory procedures is the preferred method for determining the higher heating value of gas supplied to the overfired broiler under test. It is recommended that all testing be performed with gas having a higher heating value of 1000 to 1075 Btu/ft³.

10.1.2 For gas overfired broilers, add electric energy consumption to gas energy for all tests, with the exception of the energy input rate test (see 10.2).

10.1.3 For electric overfired broilers, record the following for each test run:

10.1.3.1 Voltage while elements are energized,

10.1.3.2 Energy input rate during or immediately prior to test (for example, during the preheat for that day's testing), and

10.1.3.3 Ambient temperature.

10.1.4 For each test run, confirm that the peak input rate is within $\pm 5\%$ of the rated nameplate input. If the difference is greater than 5%, terminate testing and contact the manufacturer. The manufacturer may make appropriate changes or adjustments to the overfired broiler.

10.2 *Energy Input Rate:*

10.2.1 For gas overfired broilers, set the controls to achieve maximum input. Allow the unit to run for a period of 15 min, then monitor the time required for the overfired broiler to consume 10 ft³ (0.28 m³) of gas.

10.2.2 For electric overfired broilers, monitor the energy consumption for 15 min with the controls set to achieve maximum input.

10.2.3 Calculate and record the overfired broiler’s energy input rate and compare the result to the rated nameplate input. Confirm that the measured input rate (Btu/h (kJ/h)) for a gas overfired broiler and kW for an electric overfired broiler) is within 5 % of the rated nameplate input. If the difference is greater than 5 %, terminate testing and contact the manufacturer. The manufacturer may make appropriate changes or adjustments to the overfired broiler, or supply another overfired broiler for testing.

NOTE 5—For gas overfired broilers, only the burner energy consumption is used to compare the calculated energy input rate with the rated gas input; any electrical energy use shall be calculated and recorded separately as the control energy rate.

10.3 *Temperature Uniformity:*

10.3.1 Using a strain gage welder, attach one thermocouple to the center of one side of each 5-in (127-mm) diameter, ¼-in (6.3-mm) thick steel disk. Add a strain relief to each thermocouple to facilitate handling of the disks.

10.3.2 Determine the number of disks required for the broiler under test as follows:

10.3.2.1 Measure the actual width and depth of the broiler grate.

10.3.2.2 Each column of disks (from front to back) shall have one disk for every 5¼ in. (133 mm) of grate depth.

10.3.2.3 Each row of disks (from side to side) shall have one disk for every 5¼ in. (133 mm) of grate width.

10.3.2.4 Record the number of disks used.

NOTE 6—This determination accounts for the differences between nominal broiler size and actual grate size. It is the intent of this test method to determine the temperature uniformity using a reasonable number of steel disks, while still allowing for space between disks.

10.3.3 Position the disks thermocoupled-side up on the broiler grate. Arrange the disks in a grid pattern and ensure that they are evenly spaced across the broiler grate (see Fig. 2).

10.3.4 Set the overfired broiler controls to achieve maximum input, then adjust the controls back so that the temperature of each disk does not exceed 800°F (412°C). Mark this position on the control knobs.

NOTE 7—The overfired broiler should be set such that the broiling temperature is as high as possible without exceeding 800°F (412°C).

NOTE 8—Be sure to stabilize the broiler for at least 60 min after any control adjustment.

10.3.5 Monitor the disk temperatures for a minimum of 60 min. Determine the average temperature for each disk.

10.4 *Preheat Energy Consumption and Time:*

10.4.1 Place one disk from 10.3.1 in the center of each linear foot (305 mm) of broiler grate, thermocouple side up.

10.4.2 Record the disk temperature(s) and the ambient kitchen temperature at the start of the test (each temperature shall be 75 ± 5°F (24 ± 2.8°C) at start of the test).

10.4.3 Set the overfired broiler controls to achieve maximum energy input.

10.4.4 Turn the broiler on and record the energy and time to preheat all sections of the overfired broiler jointly. Preheat is judged complete when the last of the disks reaches 700°F (357°C).

NOTE 9—Research at the Food Service Technology Center has determined that an overfired broiler is ready to cook when the broiler has reached a temperature of 700°F.



FIG. 2 Thermocouple Disk Placement

10.5 *Pilot Energy Rate:*

10.5.1 For a gas overfired broiler with a standing pilot, set the gas valve at the “pilot” position and set the overfired broiler’s temperature control to the “off” position.

10.5.2 Light and adjust the pilot according to the manufacturer’s instructions.

10.5.3 Monitor gas consumption for a minimum of 8 h of pilot operation.

10.6 *Idle Energy Rate:*

10.6.1 Set the overfired broiler controls to the position determined in 10.3.4. Turn the overfired broiler on, preheat the broiler, and allow it to stabilize for 60 min.

10.6.2 After the 60-min stabilization period, monitor the energy consumption for an additional 2 h.

10.7 *Cooking Energy Efficiency:*

10.7.1 Cooking energy efficiency tests are performed for both heavy and light load scenarios. Determine the number of chicken breasts to be used in each test run as follows:

10.7.1.1 Each row (left to right) of chicken breasts placed on the grate for the heavy load test shall have one breast for each 4 in. of grate width. For example, an overfired broiler with a grate width of 25 in. would use six chicken breasts per row.

10.7.1.2 For heavy load test runs, there shall be one row of chicken breasts for each 4 in. of grate depth, minus the row nearest the front of the broiler. For example, an overfired broiler with a grate depth of 27 in. would use five rows of chicken breasts. This is determined by the following: 27 in. of grate depth equals six rows, minus the front row equals five rows.

NOTE 10—Research at the Food Service Technology Center has determined that the front row of an overfired broiler is much cooler than the rest of the broiler grate, due to design considerations and the open front configuration of the overfired broiler. As a result, food positioned on the front row will not cook to a proper doneness in the same time as food positioned elsewhere in the broiler. Therefore, the front row is omitted from the energy efficiency tests.

10.7.1.3 Each light load test run shall use five chicken breasts.

10.7.2 Thaw enough chicken breasts for a minimum of three heavy load and three light load test runs, based on the number of breasts determined in 10.7.1. Place thawed chicken breasts on drip racks and drain in a refrigerator for 1 h.

NOTE 11—It is suggested that the frozen chicken breasts be thawed in cold running water.

NOTE 12—It is important that the raw chicken breasts be properly and consistently thawed and drained. Excess moisture will affect the energy efficiency calculations and make test replication difficult.

NOTE 13—A minimum of three test runs is specified for each loading scenario, however, more test runs may be necessary if the results do not meet the uncertainty criteria specified in Annex A1.

10.7.3 Mark a sheet pan with a number for later identification. Weigh the sheet pan and record the weight. Place the number of chicken breasts required for the test run on the sheet pan. Weigh the pan with the chicken breasts to determine the weight of the chicken breasts. Determine the target weight range by multiplying the number of chicken breasts used by 0.3 ± 0.0125 lb. If the weight of the chicken breasts is not within the target weight range, thaw extra chicken breasts and substitute individual breasts as necessary to reach the target weight. Repeat 10.7.3 for each test run.

10.7.4 For heavy load test runs, use the number of rows determined in 10.7.1.2 to select an equal number of chicken breasts from each load to be monitored with thermocouples. For light load test runs, all five chicken breasts shall be monitored. With an appropriate length of fiberglass insulated, Type K thermocouple wire, expose approximately $\frac{3}{16}$ -in. of bare wire from one end and weld together. Insert thermocouple into the thickest part of each chicken breast, from the side and at an angle as close to horizontal as possible. The thermocouple wires may be secured to size 1 fish hooks, implanted in the chicken breasts near the thermocouple wire, to help prevent them from pulling out of position during the loading and turning sequences (see Figs. 3-5).

10.7.5 Cover the pans with cellophane (to inhibit moisture loss) and place in a refrigerator until they are stabilized at $37 \pm 2^\circ\text{F}$. Do not store thawed chicken in the refrigerator for more than one week.

10.7.6 Set the overfired broiler controls to the position determined in 10.3.4. Turn the overfired broiler on, preheat the broiler, and allow it to stabilize for 60 min.

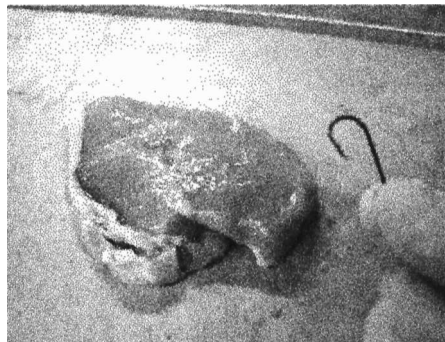


FIG. 3 Thermocouple Strain Relief