



Designation: **C374 – 14 C374 – 14 (Reapproved 2015)^{ε1}**

Standard Test Methods for Fusion Flow of Porcelain Enamel Frits (Flow-Button Methods)¹

This standard is issued under the fixed designation C374; the number immediately following the designation indicates the year of original adoption or, in the case of revision, the year of last revision. A number in parentheses indicates the year of last reapproval. A superscript epsilon (ϵ) indicates an editorial change since the last revision or reapproval.

^{ε1} NOTE—Sections 3 and 8 corrected editorially in May 2015.

INTRODUCTION

This test provides a procedure to compare the fluidity of a glass frit or a porcelain enamel powder to a standard reference material at a fixed temperature above the sample's glass temperature.

1. Scope

1.1 These test methods cover evaluation of the relative fusion flow characteristics of samples of a given porcelain enamel frit by comparison with an established standard for that frit.

1.2 Two test methods are included, differing only in certain details of the samples and in the apparatus and procedure for preparation of test specimens. Both test methods give equally reproducible results and provide a satisfactory basis for comparison of fusion flow of the sample with that of the established standard.

1.2.1 *Test Method A* employs granular particles of frit to which a bonding agent has been added. Button specimens are formed under high pressure in a hydraulic press.

1.2.2 *Test Method B* employs crushed, sized particles of frit to which a bonding agent has been added. Button specimens are formed in a steel mold by hand.

1.3 The values stated in inch-pound units are to be regarded as standard. The values given in parentheses are mathematical conversions to SI units that are provided for information only and are not considered standard.

1.4 *This standard does not purport to address all of the safety concerns, if any, associated with its use. It is the responsibility of the user of this standard to establish appropriate safety and health practices and determine the applicability of regulatory limitations prior to use.*

2. Referenced Document

2.1 *ASTM Standards:*²

E11 Specification for Woven Wire Test Sieve Cloth and Test Sieves

TEST METHOD A

3. Apparatus

3.1 *Mortar*, of hard steel, resistant to abrasion by the porcelain enamel frit, and conforming to the dimensions shown in **Fig. 1**.

NOTE 1—Suitable mortars are available commercially under the designation “tool steel crushing mortar.”

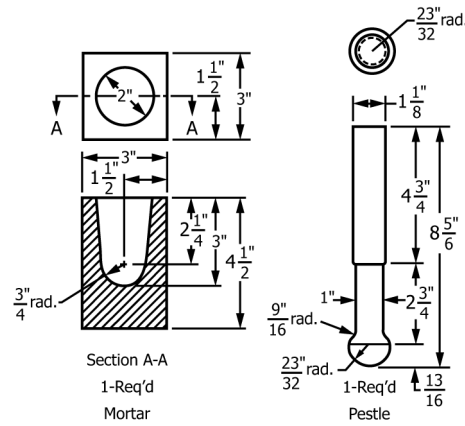
3.2 *Sieves*—No. 12 (1.70-mm) and No. 200 (75- μ m) sieves conforming to Specification **E11**.

NOTE 2—Tyler Standard Series sieves No. 12 (0.0060 in. (0.152 mm) openings) and No. 200 (0.029 in. (0.07 mm) openings) correspond to ASTM sieves Nos. 12 and 200 (U.S. Standard Sieves series numbers).

¹ These test methods are under the jurisdiction of ASTM Committee **B08** on Metallic and Inorganic Coatings and are the direct responsibility of Subcommittee **B08.12** on Materials for Porcelain Enamel and Ceramic-Metal Systems.

Current edition approved ~~May 1, 2014~~ May 1, 2015. Published ~~June 2014~~ May 2015. Originally approved in 1955. Last previous edition approved in 2009 as ~~C374 – 70~~ (2009) C374 – 14. ^{ε1} DOI: 10.1520/C0374-14.10.1520/C0374-14R15E01.

² For referenced ASTM standards, visit the ASTM website, www.astm.org, or contact ASTM Customer Service at service@astm.org. For *Annual Book of ASTM Standards* volume information, refer to the standard's Document Summary page on the ASTM website.



NOTE 1—1 in. = 25.4 mm.

1 in. = 25.4 mm

FIG. 1 Mortar

3.3 *Hydraulic Press*, capable of developing 3500-lbf (15 600 N) force (Fig. 2).

3.4 *Steel Mold Assembly*, consisting of a die and plunger, and having an inside diameter of 1/2 in. (12.7 mm) over its length of 2 1/8 in. (54 mm) as illustrated in Fig. 3.

3.5 *Fusion Flow Rack*, preferably constructed of heat-resisting alloy and conforming to the detailed requirements shown in Fig. 4.

4. Sample

4.1 A representative sample of the frit to be tested shall be obtained, mixed thoroughly, and reduced by quartering to about 25 g. This sample shall be crushed in a hard steel mortar to pass a No. 12 (1.70 mm) sieve and be retained on a No. 200 (75 μm) sieve.

4.2 For wet-ground enamels the sample shall be evaporated to dryness in an evaporation dish. After cooling, the dried enamel shall be loosened and again pulverized using a pestle and mortar or similar apparatus.

4.3 Dry ground samples of frit, ready-to-use powder, or enamel powder for dry electrostatic application may also be tested.

<https://standards.iteh.ai/catalog/standards/sist/0280f0dc-6439-474a-91a2-8b9b0c402952/astm-c374-142015e1>

5. Test Specimen

5.1 Weigh 3.5 ± 0.05 -g samples of the standard frit and of the material to be tested and thoroughly mix each of these samples with four or five drops of a 1 % gum arabic solution. Mold fusion button test specimens of the standard and of the sample as directed in 5.2. For dry electrostatic powder samples, use four to five drops of acetone instead of the aqueous gum arabic solution.

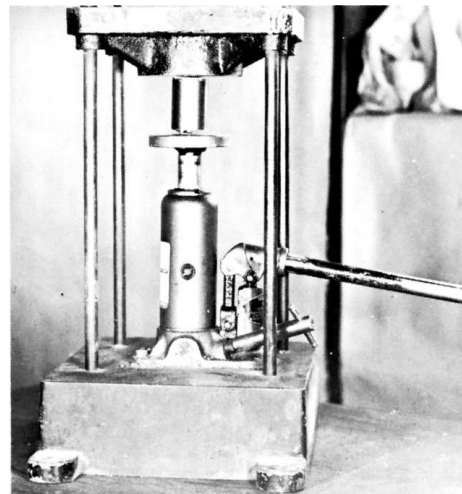
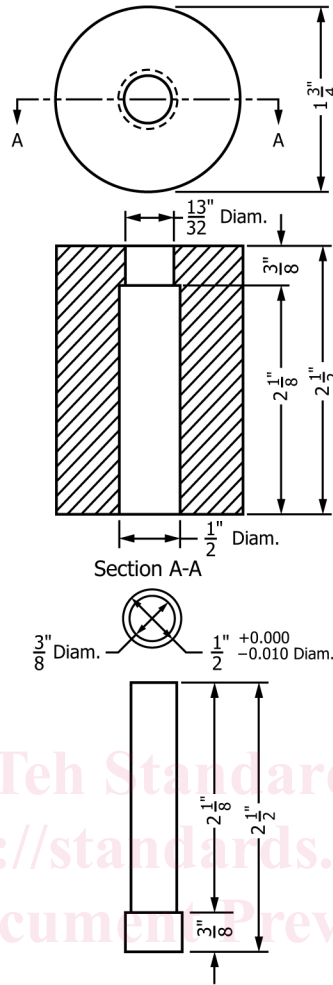


FIG. 2 Hydraulic Press



Note 1—Metric Equivalent

in.	mm	in.	mm
0.010	0.03		
3/8	9.5	1 3/4	44.0
13/32	10.3	2 1/8	54.0
1/2	12.7	2 1/2	63.5

Metric Equivalent			
in.	mm	in.	mm
0.010	0.03		
3/8	9.5	1 3/4	44.0
13/32	10.3	2 1/8	54.0
1/2	12.7	2 1/2	63.5

FIG. 3 Mold for Test Specimens—Test Method A

5.2 Place the sample in the steel mold. Place the mold assembly containing the sample in a hydraulic press and bring the press up to 3000 to 3500 lbf (13.3 to 15.6 kN) total load, and immediately release (Fig. 2). Force the formed button out of the mold with the plunger, taking care not to damage the button in any way that might change the dimensions.

5.3 Dry the test specimens in a suitable oven at 212°F (100°C) for 1 h.

NOTE 2—Special care must be exercised in drying buttons formed by this method, before firing, in order to prevent bloating and possible eruption of the button when first placed in the furnace.

6. Procedure

6.1 *Mounting*—Place the dried fusion buttons on a fired groundcoat plate. The location of the test specimens with respect to the standard may be modified as desired. Although the gage of metal used for the ground-coated plate is not of critical importance,