



SLOVENSKI STANDARD

SIST EN 300 909 V7.3.1:2003

01-december-2003

8 [[[HJb]`W] b]`hY`_ca i b]_UW`g_]`g]ghYa `fZuU&ZL`E`?cX]fUb`Y`_UbUcj `f} GA
\$) '\$' žfUh`]]WU+" "%ž]nXUU% - , Ł

Digital cellular telecommunications system (Phase 2+) (GSM); Channel coding (GSM 05.03 version 7.3.1 Release 1998)

iTeh STANDARD PREVIEW
(standards.iteh.ai)

Ta slovenski standard je istoveten z: **EN 300 909 Version 7.3.1**

SIST EN 300 909 V7.3.1:2003
<https://standards.iteh.ai/catalog/standards/sist/955a2256-fbf-468d-9bec-1e1eaf15b19/sist-en-300-909-v7-3-1-2003>

ICS:

33.070.50	Globalni sistem za mobilno telekomunikacijo (GSM)	Global System for Mobile Communication (GSM)
-----------	---	--

SIST EN 300 909 V7.3.1:2003

en

iTeh STANDARD PREVIEW
(standards.iteh.ai)

[SIST EN 300 909 V7.3.1:2003](https://standards.iteh.ai/catalog/standards/sist/953a225b-ffb4-488d-9bef-1e1eafc15b19/sist-en-300-909-v7-3-1-2003)

<https://standards.iteh.ai/catalog/standards/sist/953a225b-ffb4-488d-9bef-1e1eafc15b19/sist-en-300-909-v7-3-1-2003>

ETSI EN 300 909 V7.3.1 (2000-09)

European Standard (Telecommunications series)

Digital cellular telecommunications system (Phase 2+); Channel coding (GSM 05.03 version 7.3.1 Release 1998)

iTeh STANDARD PREVIEW
(standards.iteh.ai)

GSM®
GLOBAL SYSTEM FOR
MOBILE COMMUNICATIONS

[SIST EN 300 909 V7.3.1:2003](https://standards.iteh.ai/catalog/standards/sist/953a225b-fbf-488d-9bef-1e1eafc15b19/sist-en-300-909-v7-3-1-2003)

<https://standards.iteh.ai/catalog/standards/sist/953a225b-fbf-488d-9bef-1e1eafc15b19/sist-en-300-909-v7-3-1-2003>



Reference

REN/SMG-020503Q7R1

KeywordsDigital cellular telecommunications system,
Global System for Mobile communications (GSM)**ETSI**650 Route des Lucioles
F-06921 Sophia Antipolis Cedex - FRANCE

Tel.: +33 4 92 94 42 00 Fax: +33 4 93 65 47 16

Siret N° 348 623 562 00017 - NAF 742 C
Association à but non lucratif enregistrée à la
Sous-Préfecture de Grasse (06) N° 7803/88**iTeh STANDARD PREVIEW**
(standards.iteh.ai)SIST EN 300 909 V7.3.1:2003<https://standards.iteh.ai/catalog/standards/sist/953a225b-fbf-488d-9bef-1e1eaf-15b19/sist-en-300-909-v7-3-1-2003>

Important notice

Individual copies of the present document can be downloaded from:

<http://www.etsi.org>

The present document may be made available in more than one electronic version or in print. In any case of existing or perceived difference in contents between such versions, the reference version is the Portable Document Format (PDF). In case of dispute, the reference shall be the printing on ETSI printers of the PDF version kept on a specific network drive within ETSI Secretariat.

Users of the present document should be aware that the document may be subject to revision or change of status. Information on the current status of this and other ETSI documents is available at <http://www.etsi.org/tb/status/>

If you find errors in the present document, send your comment to:
editor@etsi.fr

Copyright Notification

No part may be reproduced except as authorized by written permission.
The copyright and the foregoing restriction extend to reproduction in all media.

© European Telecommunications Standards Institute 2000.
All rights reserved.

Contents

Intellectual Property Rights	7
Foreword.....	7
1 Scope	8
1.1 References	8
1.2 Abbreviations	9
2 General	9
2.1 General organization	9
2.2 Naming Convention	12
3 Traffic Channels (TCH)	13
3.1 Speech channel at full rate (TCH/FS and TCH/EFS).....	13
3.1.1 Preliminary channel coding for EFR only	13
3.1.1.1 CRC calculation	13
3.1.1.2 Repetition bits	14
3.1.1.3 Correspondence between input and output of preliminary channel coding.....	14
3.1.2 Channel coding for FR and EFR.....	14
3.1.2.1 Parity and tailing for a speech frame.....	14
3.1.2.2 Convolutional encoder	15
3.1.3 Interleaving.....	15
3.1.4 Mapping on a Burst.....	15
3.2 Speech channel at half rate (TCH/HS).....	16
3.2.1 Parity and tailing for a speech frame.....	16
3.2.2 Convolutional encoder.....	16
3.2.3 Interleaving	17
3.2.4 Mapping on a burst	17
3.3 Data channel at full rate, 12.0 kbit/s radio interface rate (9.6 kbit/s services (TCH/F9.6)).....	18
3.3.1 Interface with user unit	18
3.3.2 Block code	18
3.3.3 Convolutional encoder.....	18
3.3.4 Interleaving.....	18
3.3.5 Mapping on a Burst.....	19
3.4 Data channel at full rate, 6.0 kbit/s radio interface rate (4,8 kbit/s services (TCH/F4.8)).....	19
3.4.1 Interface with user unit	19
3.4.2 Block code	19
3.4.3 Convolutional encoder.....	19
3.4.4 Interleaving	19
3.4.5 Mapping on a Burst.....	20
3.5 Data channel at half rate, 6,0 kbit/s radio interface rate (4,8 kbit/s services (TCH/H4.8)).....	20
3.5.1 Interface with user unit	20
3.5.2 Block code	20
3.5.3 Convolutional encoder.....	20
3.5.4 Interleaving.....	20
3.5.5 Mapping on a Burst.....	20
3.6 Data channel at full rate, 3,6 kbit/s radio interface rate (2,4 kbit/s and less services (TCH/F2.4))	20
3.6.1 Interface with user unit	20
3.6.2 Block code	20
3.6.3 Convolutional encoder.....	21
3.6.4 Interleaving	21
3.6.5 Mapping on a Burst.....	21
3.7 Data channel at half rate, 3,6 kbit/s radio interface rate (2,4 kbit/s and less services (TCH/H2.4)).....	21
3.7.1 Interface with user unit	21
3.7.2 Block code	21
3.7.3 Convolutional encoder.....	22
3.7.4 Interleaving.....	22
3.7.5 Mapping on a Burst.....	22
3.8 Data channel at full rate, 14,5 kbit/s radio interface rate (14,4 kbit/s services (TCH/F14.4)).....	22

3.8.1	Interface with user unit	22
3.8.2	Block code	22
3.8.3	Convolutional encoder	22
3.8.4	Interleaving	22
3.8.5	Mapping on a Burst	23
3.9	Adaptive multi rate speech channel at full rate (TCH/AFS)	23
3.9.1	SID_UPDATE	23
3.9.1.1	Coding of in-band data	23
3.9.1.2	Parity and convolutional encoding for the comfort noise parameters	24
3.9.1.3	Identification marker	25
3.9.1.4	Interleaving	25
3.9.1.5	Mapping on a Burst	25
3.9.2	SID_FIRST	25
3.9.2.1	Coding of in-band data	25
3.9.2.2	Identification marker	25
3.9.2.3	Interleaving	25
3.9.2.4	Mapping on a Burst	26
3.9.3	ONSET	26
3.9.3.1	Coding of in-band data	26
3.9.3.2	Interleaving	26
3.9.3.3	Mapping on a Burst	26
3.9.4	SPEECH	26
3.9.4.1	Coding of the in-band data	27
3.9.4.2	Ordering according to subjective importance	27
3.9.4.3	Parity for speech frames	28
3.9.4.4	Convolutional encoder	29
3.9.4.5	Interleaving	36
3.9.4.6	Mapping on a Burst	36
3.9.5	RATSCCH	36
3.9.5.1	Coding of in-band data	36
3.9.5.2	Parity and convolutional encoding for the RATSCCH message	36
3.9.5.3	Identification marker	37
3.9.5.4	Interleaving	37
3.9.5.5	Mapping on a Burst	37
3.10	Adaptive multi rate speech channel at half rate (TCH/AHS)	37
3.10.1	SID_UPDATE	38
3.10.1.1	Coding of in-band data	38
3.10.1.2	Parity and convolutional encoding for the comfort noise parameters	38
3.10.1.3	Identification marker	39
3.10.1.4	Interleaving	39
3.10.1.5	Mapping on a Burst	39
3.10.2	SID_UPDATE_INH	40
3.10.2.1	Coding of in-band data	40
3.10.2.2	Identification marker	40
3.10.2.3	Interleaving	40
3.10.2.4	Mapping on a Burst	40
3.10.3	SID_FIRST_P1	41
3.10.3.1	Coding of in-band data	41
3.10.3.2	Identification marker	41
3.10.3.3	Interleaving	41
3.10.3.4	Mapping on a Burst	41
3.10.4	SID_FIRST_P2	41
3.10.4.1	Coding of in-band data	41
3.10.4.2	Interleaving	41
3.10.4.3	Mapping on a Burst	42
3.10.5	SID_FIRST_INH	42
3.10.5.1	Coding of in-band data	42
3.10.5.2	Identification marker	42
3.10.5.3	Interleaving	42
3.10.5.4	Mapping on a Burst	42
3.10.6	ONSET	42
3.10.6.1	Coding of in-band data	42

3.10.6.2	Interleaving	42
3.10.6.3	Mapping on a Burst	43
3.10.7	SPEECH	43
3.10.7.1	Coding of the in-band data	43
3.10.7.2	Ordering according to subjective importance	43
3.10.7.3	Parity for speech frames	44
3.10.7.4	Convolutional encoder	45
3.10.7.5	Interleaving	49
3.10.7.6	Mapping on a Burst	49
3.10.8	RATSCCH_MARKER	49
3.10.8.1	Coding of in-band data	50
3.10.8.2	Identification marker	50
3.10.8.3	Interleaving	50
3.10.8.4	Mapping on a Burst	50
3.10.9	RATSCCH_DATA	50
3.10.9.1	Coding of in-band data	50
3.10.9.2	Parity and convolutional encoding for the RATSCCH message	50
3.10.9.3	Interleaving	51
3.10.9.4	Mapping on a Burst	51
4	Control Channels	51
4.1	Slow associated control channel (SACCH)	51
4.1.1	Block constitution	51
4.1.2	Block code	51
4.1.3	Convolutional encoder	52
4.1.4	Interleaving	52
4.1.5	Mapping on a Burst	52
4.2	Fast associated control channel at full rate (FACCH/F)	53
4.2.1	Block constitution	53
4.2.2	Block code	53
4.2.3	Convolutional encoder	53
4.2.4	Interleaving	53
4.2.5	Mapping on a Burst	53
4.3	Fast associated control channel at half rate (FACCH/H)	54
4.3.1	Block constitution	54
4.3.2	Block code	54
4.3.3	Convolutional encoder	54
4.3.4	Interleaving	54
4.3.5	Mapping on a Burst	54
4.4	Broadcast control, Paging, Access grant, Notification and Cell broadcast channels (BCCH, PCH, AGCH, NCH, CBCH), CTS Paging and Access grant channels (CTSPCH, CTSAGCH)	55
4.5	Stand-alone dedicated control channel (SDCCH)	55
4.6	Random access channel (RACH)	55
4.7	Synchronization channel (SCH), CTS Beacon and Access request channels (CTSBCH-SB, CTSARCH)	56
4.8	Access Burst on circuit switched channels other than RACH	56
4.9	Access Bursts for uplink access on a channel used for VGCS	56
5	Packet Switched Channels	57
5.1	Packet data traffic channel (PDTCH)	57
5.1.1	Packet data block type 1 (CS-1)	57
5.1.2	Packet data block type 2 (CS-2)	57
5.1.2.1	Block constitution	57
5.1.2.2	Block code	57
5.1.2.3	Convolutional encoder	58
5.1.2.4	Interleaving	58
5.1.2.5	Mapping on a burst	58
5.1.3	Packet data block type 3 (CS-3)	58
5.1.3.1	Block constitution	58
5.1.3.2	Block code	58
5.1.3.3	Convolutional encoder	59
5.1.3.4	Interleaving	59
5.1.3.5	Mapping on a burst	59

5.1.4	Packet data block type 4 (CS-4).....	59
5.1.4.1	Block constitution	59
5.1.4.2	Block code.....	60
5.1.4.3	Convolutional encoder	60
5.1.4.4	Interleaving	60
5.1.4.5	Mapping on a burst.....	60
5.2	Packet control channels (PACCH, PBCCH, PAGCH, PPCH, PNCH, PTCCH)	60
5.3	Packet random access channel (PRACH).....	61
5.3.1	Packet Access Burst.....	61
5.3.2	Extended Packet Access Burst.....	61
5.4	Access Burst on packet switched channels other than PRACH	61
Annex A (informative):	Summary of Channel Types.....	75
Annex B (informative):	Summary of Polynomials Used for Convolutional Codes	77
Annex C (informative):	Change control history	78
History		79

iTeh STANDARD PREVIEW (standards.iteh.ai)

[SIST EN 300 909 V7.3.1:2003](https://standards.iteh.ai/catalog/standards/sist/953a225b-ffb4-488d-9bef-1e1eafc15b19/sist-en-300-909-v7-3-1-2003)

<https://standards.iteh.ai/catalog/standards/sist/953a225b-ffb4-488d-9bef-1e1eafc15b19/sist-en-300-909-v7-3-1-2003>

Intellectual Property Rights

IPRs essential or potentially essential to the present document may have been declared to ETSI. The information pertaining to these essential IPRs, if any, is publicly available for **ETSI members and non-members**, and can be found in ETSI SR 000 314: "*Intellectual Property Rights (IPRs); Essential, or potentially Essential, IPRs notified to ETSI in respect of ETSI standards*", which is available from the ETSI Secretariat. Latest updates are available on the ETSI Web server (<http://www.etsi.org/ipr>).

Pursuant to the ETSI IPR Policy, no investigation, including IPR searches, has been carried out by ETSI. No guarantee can be given as to the existence of other IPRs not referenced in ETSI SR 000 314 (or the updates on the ETSI Web server) which are, or may be, or may become, essential to the present document.

Foreword

This European Standard (Telecommunications series) has been produced by ETSI Technical Committee Special Mobile Group (SMG).

The present document specifies the data blocks given to the encryption unit. It includes the specification of encoding. The contents of the present document may be subject to continuing work within SMG and may change following formal SMG approval. Should SMG modify the contents of the present document it will then be re-submitted for formal approval procedures by ETSI with an identifying change of release date and an increase in version number as follows:

Version 7.x.y

where:

- iTeh STANDARD PREVIEW**
(standards.iteh.ai)
- 7 GSM Phase 2+ Release 1998.
- x the second digit is incremented for changes of substance, i.e. technical enhancements, corrections, updates, etc.;
- y the third digit is incremented when editorial only changes have been incorporated in the specification.

National transposition dates

Date of adoption of the present document:	25 August 2000
Date of latest announcement of the present document (doa):	30 November 2000
Date of latest publication of new National Standard or endorsement of the present document (dop/e):	31 May 2001
Date of withdrawal of any conflicting National Standard (dow):	31 May 2001

1 Scope

A reference configuration of the transmission chain is shown in GSM 05.01 [4]. According to this reference configuration, the present document specifies the data blocks given to the encryption unit.

It includes the specification of encoding, reordering, interleaving and the stealing flag. It does not specify the channel decoding method.

The definition is given for each kind of logical channel, starting from the data provided to the channel encoder by the speech coder, the data terminal equipment, or the controller of the Mobile Station (MS) or Base Transceiver Station (BTS). The definitions of the logical channel types used in this technical specification are given in GSM 05.02 [5], a summary is in annex A.

1.1 References

The following documents contain provisions which, through reference in this text, constitute provisions of the present document.

- References are either specific (identified by date of publication, edition number, version number, etc.) or non-specific.
- For a specific reference, subsequent revisions do not apply.
- For a non-specific reference, the latest version applies.
- A non-specific reference to an ETS shall also be taken to refer to later versions published as an EN with the same number.
- For this Release 1998 document, references to GSM documents are for Release 1998 versions (version 7.x.y).

- iTech STANDARD PREVIEW
(standards.itech.ai)
- SIST EN 300 909 V7.3.1:2003
<https://standards.itech.ai/catalog/standards/sist/955a2256-fbf1-488d-90cf-1e1eaf15b19/sist-en-300-909-v7-3-1-2003>
- [1] GSM 01.04: "Digital cellular telecommunications system (Phase 2+); Abbreviations and acronyms".
 - [2] GSM 04.08: "Digital cellular telecommunications system (Phase 2+); Mobile radio interface layer 3 specification".
 - [3] GSM 04.21: "Digital cellular telecommunications system (Phase 2+); Rate adaptation on the Mobile Station - Base Station System (MS - BSS) interface".
 - [4] GSM 05.01: "Digital cellular telecommunications system (Phase 2+); Physical layer on the radio path General description".
 - [5] GSM 05.02: "Digital cellular telecommunications system (Phase 2+); Multiplexing and multiple access on the radio path".
 - [6] GSM 05.05: "Digital cellular telecommunications system (Phase 2+); Radio Transmission and Reception".
 - [7] GSM 05.09: "Digital cellular telecommunications system (Phase 2+); Link adaptation".
 - [8] GSM 06.10: "Digital cellular telecommunications system; Full rate speech transcoding".
 - [9] GSM 06.20: "Digital cellular telecommunications system; Half rate speech transcoding".
 - [10] GSM 06.60: "Digital cellular telecommunications system; Enhanced Full Rate (EFR) speech transcoding".
 - [11] GSM 06.90: "Digital cellular telecommunications system; Adaptive Multi-Rate speech transcoding".
 - [12] GSM 06.93: "Digital cellular telecommunications system; Discontinuous transmission (DTX) for Adaptive Multi-Rate speech traffic channels".

- [13] GSM 03.64: "Digital cellular telecommunications system (Phase 2+); General Packet Radio Service (GPRS); Overall description of the GPRS Radio Interface; Stage 2".
- [14] GSM 03.52: "Digital cellular telecommunications system (Phase 2+); GSM Cordless Telephony System (CTS), Phase 1; Lower layers of the CTS Radio Interface; Stage 2".

1.2 Abbreviations

Abbreviations used in the present document are listed in GSM 01.04.

2 General

2.1 General organization

Each channel has its own coding and interleaving scheme. However, the channel coding and interleaving is organized in such a way as to allow, as much as possible, a unified decoder structure.

Each channel uses the following sequence and order of operations:

- the information bits are coded with a systematic block code, building words of information + parity bits;
- these information + parity bits are encoded with a convolutional code, building the coded bits;
- reordering and interleaving the coded bits, and adding a stealing flag, gives the interleaved bits.

All these operations are made block by block, the size of which depends on the channel. However, most of the channels use a block of 456 coded bits which is interleaved and mapped onto bursts in a very similar way for all of them. Figures 1a and 1b give a diagram showing the general structure of the channel coding.

This block of 456 coded bits is the basic structure of the channel coding scheme. In the case of full rate speech TCH, this block carries the information of one speech frame. In case of control channels, it carries one message.

In the case of half rate speech TCH, the information of one speech frame is carried in a block of 228 coded bits.

In the case of the Enhanced full rate speech the information bits coming out of the source codec first go through a preliminary channel coding. then the channel coding as described above takes place.

In the case of a packet switched channel the block of 456 coded bits carries one radio block.

In the case of FACCH, a coded message block of 456 bits is divided into eight sub-blocks. The first four sub-blocks are sent by stealing the even numbered bits of four timeslots in consecutive frames used for the TCH. The other four sub-blocks are sent by stealing the odd numbered bits of the relevant timeslot in four consecutive used frames delayed 2 or 4 frames relative to the first frame. Along with each block of 456 coded bits there is, in addition, a stealing flag (8 bits), indicating whether the block belongs to the TCH or to the FACCH. In the case of SACCH, BCCH, CCCH or CTSCCH, this stealing flag is dummy. In the case of a packet switched channel, these bits are used to indicate the coding scheme used.

Some cases do not fit in the general organization, and use short blocks of coded bits which are sent completely in one timeslot. They are the random access messages of:

- the RACH;
- or PRACH;

on uplink and the synchronization information broadcast of the SCH on downlink. In CTS, they are the access request message of the CTSARCH on uplink and the information broadcast on the CTSBCH-SB on downlink.

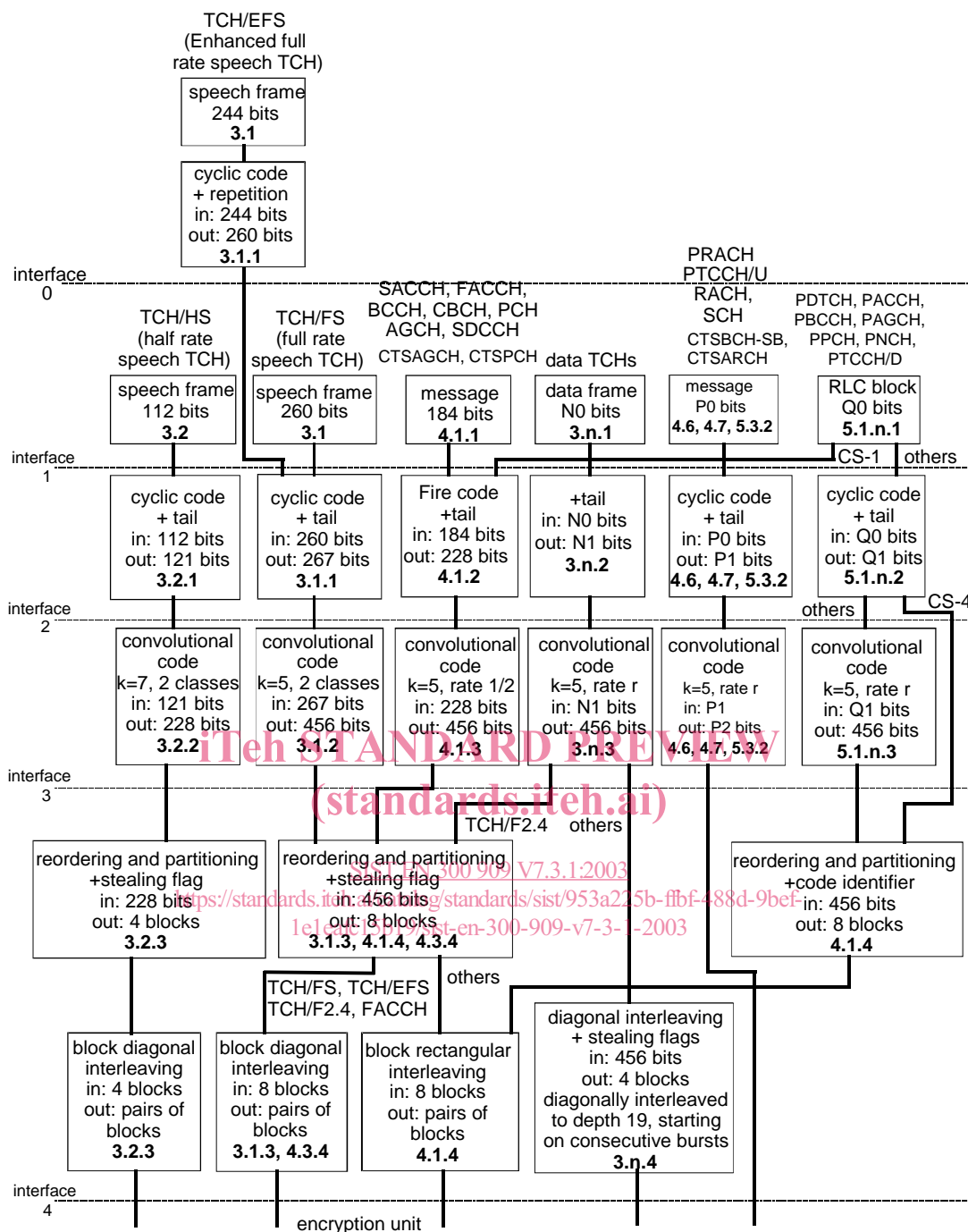


Figure 1a: Channel Coding and Interleaving Organization

In each box, the last line indicates the chapter defining the function. In the case of RACH, P0 = 8 and P1 = 18; in the case of SCH, CTSBCH-SB and CTSARCH, P0 = 25 and P1 = 39. In the case of data TCHs, N0, N1 and n depend on the type of data TCH.

Interfaces:

- 1) information bits (d);
- 2) information + parity + tail bits (u);
- 3) coded bits (c);
- 4) interleaved bits (e).

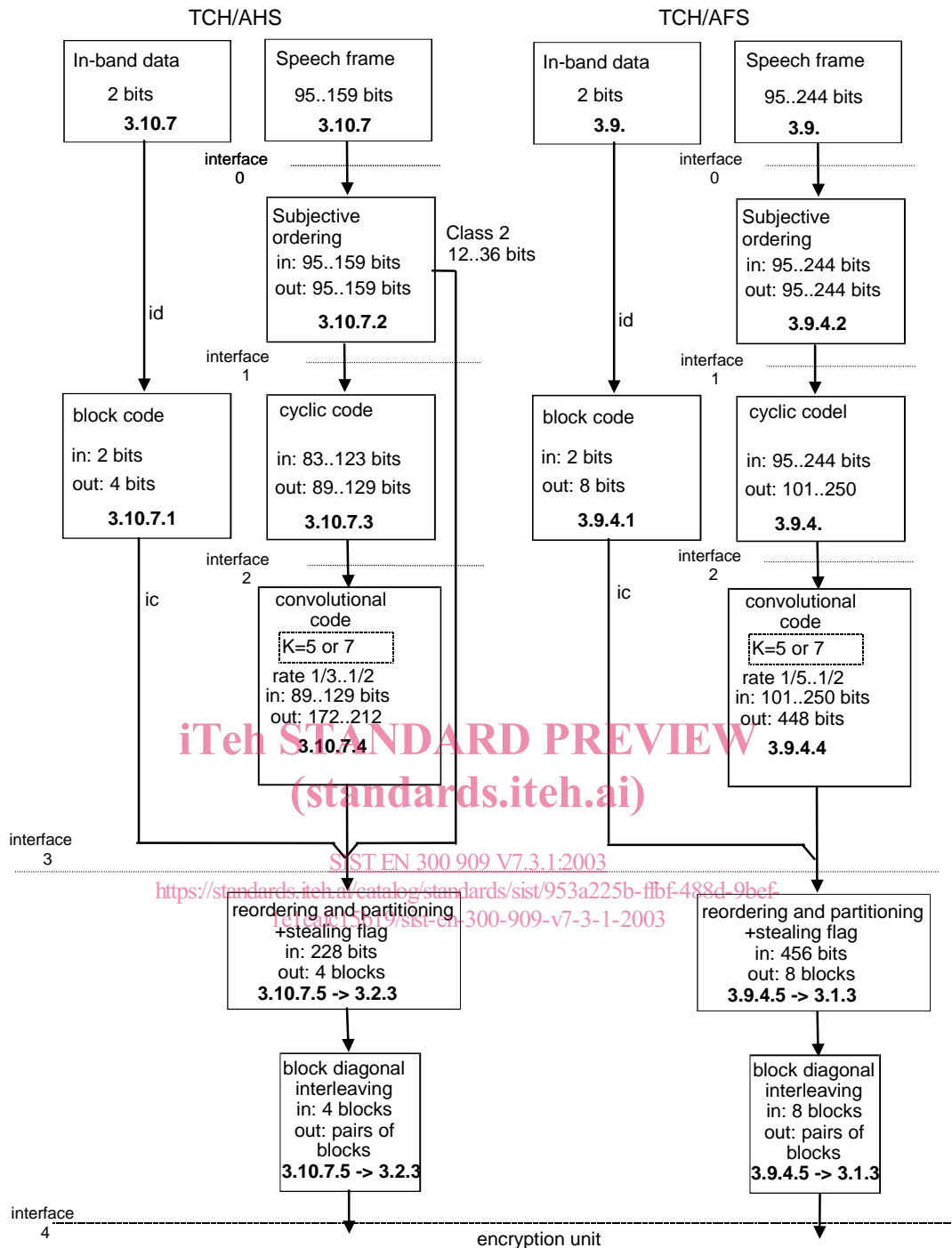


Figure 1b: Channel Coding and Interleaving Organization, adaptive multi-rate speech

In each box, the last line indicates the chapter defining the function.

Interfaces:

- 0) speech bits from the speech encoder (s);
- 1) reordered speech bits (d);
- 2) speech + parity + tail bits (u);
- 3) coded bits (c);
- 4) interleaved bits (e).

2.2 Naming Convention

For ease of understanding a naming convention for bits is given for use throughout the technical specification:

- General naming:

"k" and "j" for numbering of bits in data blocks and bursts;

" K_x " gives the amount of bits in one block, where "x" refers to the data type;

"n" is used for numbering of delivered data blocks where;

"N" marks a certain data block;

"B" is used for numbering of bursts or blocks where;

" B_0 " marks the first burst or block carrying bits from the data block with $n = 0$ (first data block in the transmission).

- Data delivered to the preliminary channel encoding unit (for EFR only):

$s(k)$ for $k = 1, \dots, K_S$

- Data delivered by the preliminary channel encoding unit (for EFR only) before bits rearrangement

$w(k)$ for $k = 1, \dots, K_W$

- Data delivered to the encoding unit (interface 1 in figure 1):

$d(k)$ for $k = 0, 1, \dots, K_d - 1$

- Input in-band data bits (for TCH/AMR only):

$id(k)$ for $k = 0, 1$

- Encoded in-band data bits (for TCH/AMR only):

$ic(k)$ for $k = 0, 1, \dots, 3$ TCH/AHS speech frames or

$k = 0, 1, \dots, 7$ TCH/AFS speech frames or

$k = 0, 1, \dots, 15$ TCH/AMR, SID frames

- Code identifying the used coding scheme (for packet switched channels only):

$q(k)$ for $k = 0, 1, \dots, 7$

- Data after the first encoding step (block code, cyclic code; interface 2 in figure 1):

$u(k)$ for $k = 0, 1, \dots, K_u - 1$

- Data put into the shift register of the convolutional code and calculated from the data bits $u(k)$ and the feedback bits in recursive systematic convolutional codes

$r(k)$ for $k = 0, 1, \dots, K_r - 1$

- Data after the second encoding step (convolutional code ; interface 3 in figure 1):

$c(n,k)$ or $c(k)$ for $k = 0, 1, \dots, K_c - 1$

$n = 0, 1, \dots, N, N+1, \dots$

- Interleaved data:

$$i(B,k) \quad \text{for} \quad k = 0,1,\dots,K_i-1$$

$$B = B_0, B_0+1,\dots$$

- Bits in one burst (interface 4 in figure 1):

$$e(B,k) \quad \text{for} \quad k = 0,1,\dots,114,115$$

$$B = B_0, B_0+1,\dots$$

3 Traffic Channels (TCH)

Two kinds of traffic channel are considered: speech and data. Both of them use the same general structure (see figure 1), and in both cases, a piece of information can be stolen by the FACCH.

3.1 Speech channel at full rate (TCH/FS and TCH/EFS)

The speech coder (whether Full rate or Enhanced full rate) delivers to the channel encoder a sequence of blocks of data. In case of a full rate and enhanced full rate speech TCH, one block of data corresponds to one speech frame.

For the full rate coder each block contains 260 information bits, including 182 bits of class 1 (protected bits), and 78 bits of class 2 (no protection), (see table 2).

The bits delivered by the speech coder are received in the order indicated in GSM 06.10 and have to be rearranged according to table 2 before channel coding as defined in subclauses 3.1.1 to 3.1.4. The rearranged bits are labelled $\{d(0),d(1),\dots,d(259)\}$, defined in the order of decreasing importance.

For the EFR coder each block contains 244 information bits. The block of 244 information bits, labelled $s(1)\dots, s(244)$, passes through a preliminary stage, applied only to EFR (see figure 1) which produces 260 bits corresponding to the 244 input bits and 16 redundancy bits. Those 16 redundancy bits correspond to 8 CRC bits and 8 repetition bits, as described in subclause 3.1.1. The 260 bits, labelled $w(1)\dots, w(260)$, have to be rearranged according to table 7 before they are delivered to the channel encoding unit which is identical to that of the TCH/FS. The 260 bits block includes 182 bits of class 1 (protected bits) and 78 bits of class 2 (no protection). The class 1 bits are further divided into the class 1a and class 1b, class 1a bits being protected by a cyclic code and the convolutional code whereas the class 1b are protected by the convolutional code only.

3.1.1 Preliminary channel coding for EFR only

3.1.1.1 CRC calculation

An 8-bit CRC is used for error-detection. These 8 parity bits (bits $w(253)$ - $w(260)$) are generated by the cyclic generator polynomial: $g(D) = D^8 + D^4 + D^3 + D^2 + 1$ from the 65 most important bits (50 bits of class 1a and 15 bits of class 1b). These 65 bits ($b(1)$ - $b(65)$) are taken from the table 5 in the following order (read row by row, left to right):

s39	s40	s41	s42	s43	s44	s48	s87	s45	s2
s3	s8	s10	s18	s19	s24	s46	s47	s142	s143
s144	s145	s146	s147	s92	s93	s195	s196	s98	s137
s148	s94	s197	s149	s150	s95	s198	s4	s5	s11
s12	s16	s9	s6	s7	s13	s17	s20	s96	s199
s1	s14	s15	s21	s25	s26	s28	s151	s201	s190
s240	s88	s138	s191	s241					

The encoding is performed in a systematic form, which means that, in $GF(2)$, the polynomial:

$$b(1)D^{72} + b(2)D^{71} + \dots + b(65)D^8 + p(1)D^7 + p(2)D^6 + \dots + p(7)D^1 + p(8)$$

$p(1)$ - $p(8)$: the parity bits ($w(253)$ - $w(260)$)