



Designation: ~~D2452 – 03 (Reapproved 2009)~~ D2452 – 15

Standard Test Method for Extrudability of Oil- and Resin-Base Caulking Compounds¹

This standard is issued under the fixed designation D2452; the number immediately following the designation indicates the year of original adoption or, in the case of revision, the year of last revision. A number in parentheses indicates the year of last reapproval. A superscript epsilon (ϵ) indicates an editorial change since the last revision or reapproval.

1. Scope

1.1 This test method describes the laboratory procedure for determining the rate of extrusion of oil- and resin-base caulking compounds.

1.2 The values stated in metric (SI) units are to be regarded as the standard. The values given in parentheses are provided for information only.

1.3 The subcommittee with jurisdiction is not aware of any similar ISO standard.

1.4 *This standard does not purport to address all of the safety concerns, if any, associated with its use. It is the responsibility of the user of this standard to establish appropriate safety and health practices and determine the applicability of regulatory limitations prior to use.*

2. Referenced Documents

2.1 *ASTM Standards:*²

[C717 Terminology of Building Seals and Sealants](#)

[D1475 Test Method For Density of Liquid Coatings, Inks, and Related Products](#)

3. Terminology

3.1 *Definitions*—Definitions of the following terms are found in Terminology [C717](#): caulking compound, compound, sealant; sealant, standard conditions.

4. Significance and Use

4.1 The rate of extrusion determined by this test may be correlated with the rate of gunning of the compound.

5. Apparatus

5.1 *Press-Flow Extrusion Rheometer* constructed in accordance with [Fig. 1](#).

5.2 *Air Supply and Pressure Gage*, accurate to 6.9 kPa (1 psi).

5.3 *Clamps and Stand* to hold rheometer.

5.4 *Balance*, accurate to 0.01 g.

5.5 ~~*Stop Watch*~~—*Stopwatch*.

5.6 *Spatula (Steel)*.

5.7 *Weight-per-gallon Cup*, capacity 83.2 cm³.

6. Reagent

6.1 *Solvent*, such as methyl ethyl ketone.

¹ This test method is under the jurisdiction of ASTM Committee [C24](#) on Building Seals and Sealants and is the direct responsibility of Subcommittee [C24.20](#) on General Test Methods.

Current edition approved ~~Jan. 1, 2009~~ June 1, 2015. Published ~~March 2009~~ July 2015. Originally approved in 1966. Last previous edition approved in ~~2003~~ 2009 as ~~D2452 – 03~~ D2452 – 03(2009). DOI: ~~10.1520/D2452-03R09~~ 10.1520/D2452-15.

² For referenced ASTM standards, visit the ASTM website, www.astm.org, or contact ASTM Customer Service at service@astm.org. For *Annual Book of ASTM Standards* volume information, refer to the standard's Document Summary page on the ASTM website.

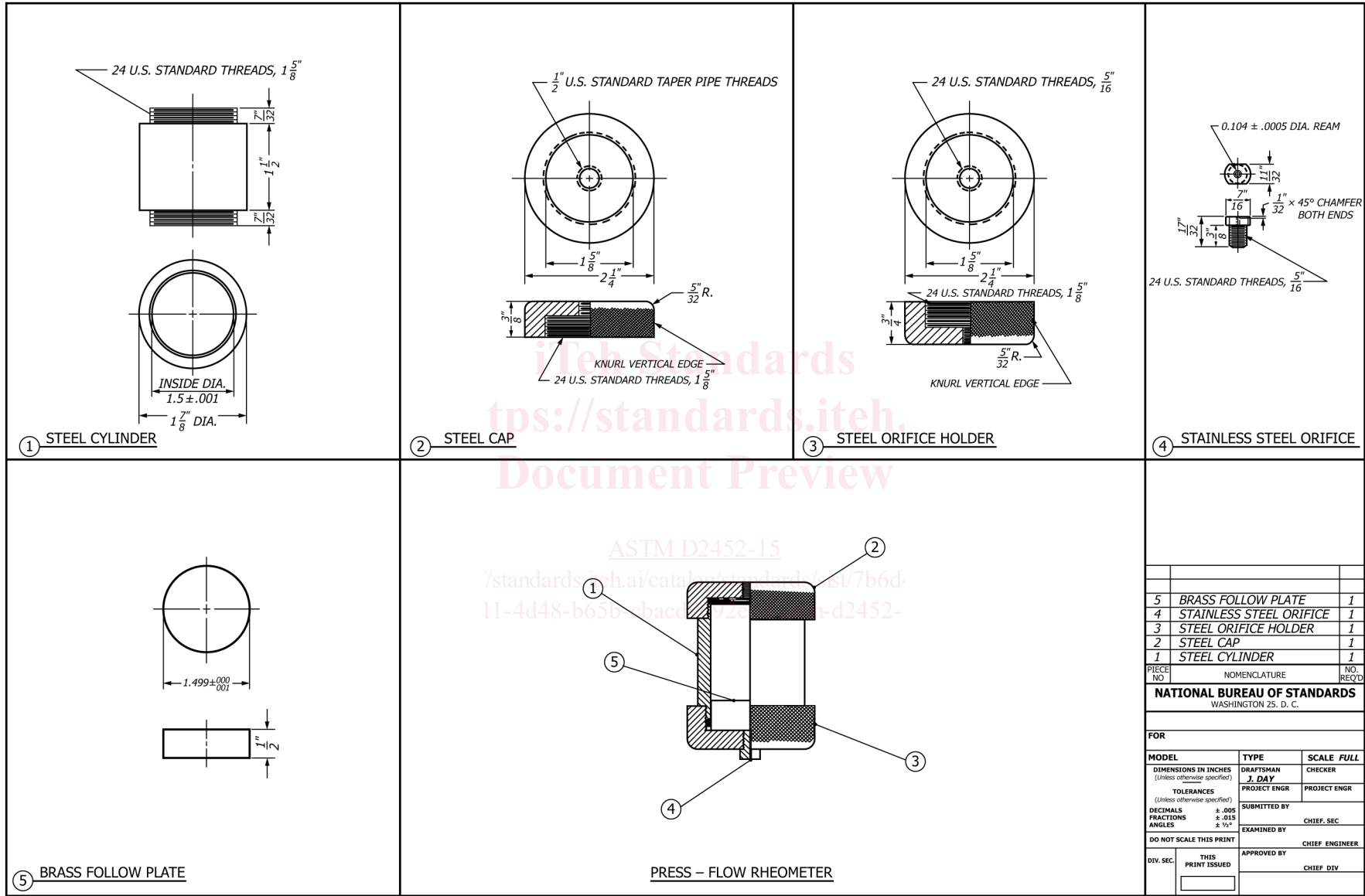


FIG. 1 Press-Flow Extrusion Rheometer