



Standard Specification for Steel Emergency Gear Stowage Locker¹

This standard is issued under the fixed designation F 1018; the number immediately following the designation indicates the year of original adoption or, in the case of revision, the year of last revision. A number in parentheses indicates the year of last reapproval. A superscript epsilon (ϵ) indicates an editorial change since the last revision or reapproval.

^{ε1} NOTE—Keywords added editorially in October 2000.

1. Scope

1.1 This specification covers the design, material, and manufacture of steel emergency gear stowage lockers.

1.2 Emergency gear lockers shall be of four types (see Section 3).

1.3 The values stated in inch-pound units are to be regarded as the standard. The values given in parentheses are for information only.

2. Referenced Documents

2.1 ASTM Standards:

- A 36/A36M Specification for Carbon Structural Steel²
 - A 276 Specification for Stainless Steel Bars and Shapes³
 - A 366/A366M Specification for Commercial Steel (CS) Sheet, Carbon (0.15 Maximum Percent) Cold-Rolled⁴
 - A 513 Specification for Electric-Resistance-Welded Carbon and Alloy Steel Mechanical Tubing⁵
 - A 563 Specification for Carbon and Alloy Steel Nuts⁵
 - B 36 Specification for Brass Plate, Sheet, Strip, and Rolled Bar⁶
 - B 124 Specification for Copper and Copper Alloy Forging Rod, Bar, and Shapes⁶
 - B 176 Specification for Copper-Alloy Die Castings⁶
- #### 2.2 ANSI Standards:
- B18.1.1 Small Solid Rivets⁷
 - B18.6.3 Slotted and Recessed Head Machine Screws and Machine Screw Nuts⁷
 - B18.21.1 Lock Washers⁷
 - B27.2 Plain Washers⁷

2.3 Other Documents:

- ABS Rules for Building and Classing Steel Vessels⁸
- SSPC Specification 6⁹
- AWS D1.1 Welding Code¹⁰

3. Classification

3.1 Emergency gear lockers shall be classified in four types as follows:

3.1.1 *Type 1*—For stowage of one complete fireman's outfit, conforming to all requirements of all sections, figures, and details of this specification.

3.1.2 *Type 2*—For stowage of two complete firemen's outfits, conforming to all requirements of all sections, figures, and details of this specification.

3.1.3 *Type 3*—For stowage of one complete fireman's outfit, with locker dimensions in accordance with Figs. 2, 3, and 4 (dimensions only), and conforming to the requirements of 3.2, 3.3, 4.1, 5.2.4, and Sections 6 and 7 inclusive.

3.1.4 *Type 4*—For stowage of two complete firemen's outfits, with locker dimensions in accordance with Figs. 2, 3, and 4 (dimensions only), and conforming to the requirements of 3.2, 3.3, 4.1, 5.2.4, and Sections 6 and 7 inclusive.

3.2 One complete fireman's outfit shall consist of the following emergency gear (not included in this specification):

3.2.1 Self-contained breathing apparatus (24 by 14 by 11 in. (610 by 355 by 280 mm)).

3.2.2 Recharge air tank (7-in. (180-mm) diameter by 22 in. (560 mm) long).

3.2.3 Set protective clothing, including helmet, gloves, and boots.

3.2.4 Lifeline (150 ft (45 m), 18 by 18 by 10 in. (455 by 455 by 255 mm)).

3.2.5 Three-cell, explosion-proof flashlight with spare cells.

3.2.6 Flame safety lamp.

¹ This specification is under the jurisdiction of ASTM Committee F-25 on Ships and Marine Technology and is the direct responsibility of Subcommittee F25.03 on Outfitting.

Current edition approved Aug. 28, 1987. Published November 1987. Originally published as F 1018 – 86. Last previous edition F 1018 – 87.

² Annual Book of ASTM Standards, Vol 01.04.

³ Annual Book of ASTM Standards, Vol 01.05.

⁴ Annual Book of ASTM Standards, Vol 01.03.

⁵ Annual Book of ASTM Standards, Vol 15.08.

⁶ Annual Book of ASTM Standards, Vol 02.01.

⁷ Available from American National Standards Institute, 11 W. 42nd St., 13th Floor, New York, NY 10036.

⁸ Available from American Bureau of Shipping, 2 World Trade Center, 106th Floor, New York, NY 10048.

⁹ Available from Steel Structures Painting Council, 4400 5th Ave., Pittsburgh, PA 15213.

¹⁰ Available from American Welding Society, 550 N.W. Le Jeune Rd., Miami, FL 33135.

3.2.7 Fire axe.

3.3 In addition to the equipment listed in 3.2, each locker shall contain space for the following (not part of this specification):

3.3.1 First-aid kit, (1), (10 by 10 by 7 in. (255 by 255 by 180 mm)).

3.3.2 Spare air tanks, as space allows (see Figs. 2, 3, and 4).

4. Ordering Information

4.1 Order using this ASTM designation, year of issue, locker type, and finish.

5. Materials and Manufacture

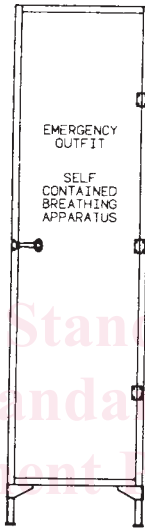
5.1 *Materials*—Materials shall be as specified in Table 1.

5.2 *Manufacture*:

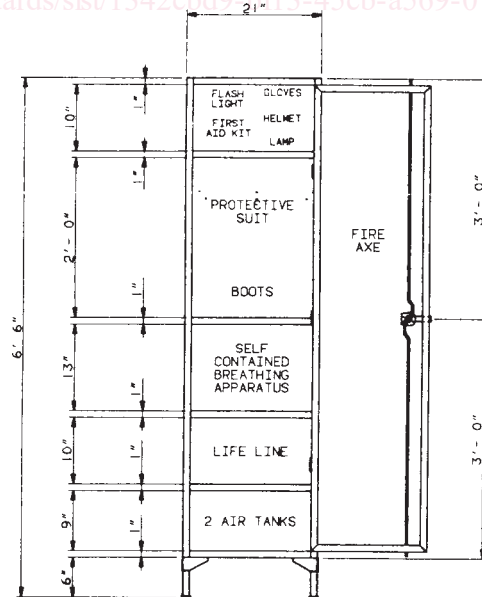
5.2.1 Mandatory dimensions and construction details for Types 1 and 2 are as depicted in Figs. 1-9.

5.2.2 Mandatory dimensions for Types 3 and 4 are as shown in Fig. 2, Fig. 3, and Fig. 5, respectively, and applicable details of Sections “A-A” and “B-B.” Alternative construction details are permissible.

5.2.3 Construction details depicted in Figs. 4-9, while specifically referring to locker Type 2, shall be adapted to suit locker Type 1.



ELEVATION - LOCKER TYPE 1

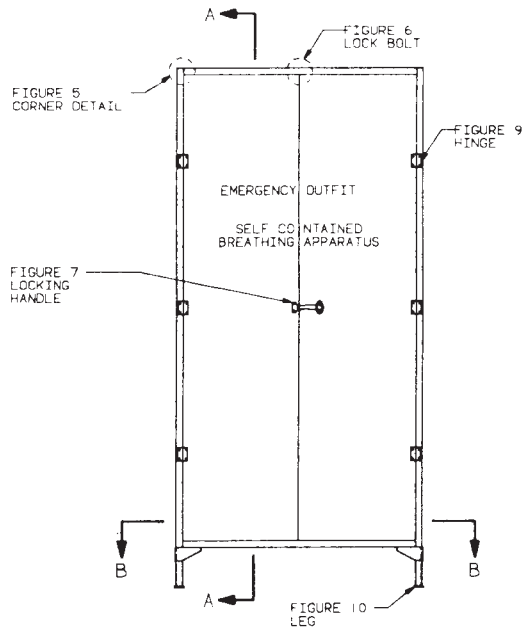


GENERAL ARRANGEMENT

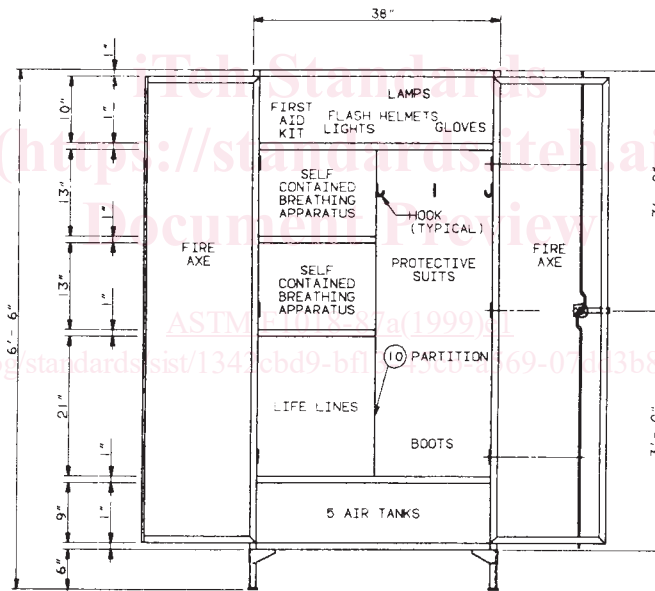
NOTE 1—1 in. = 25.4 mm.

NOTE 2—Approximately 2-in. high red lettering typical.

FIG. 1 Emergency Gear Stowage Locker—Type 1



ELEVATION - LOCKER TYPE 2, 3, 4



GENERAL ARRANGEMENT

NOTE 1—1 in. = 25.4 mm.

NOTE 2—Approximately 2-in. high red lettering typical.

FIG. 2 Emergency Gear Stowage Locker—Types 2, 3, and 4

5.2.4 Welded construction, in accordance with ABS Rules for Building and Classing Steel Vessels or AWS D 1.1 Structural Welding Code shall be used throughout, unless otherwise specified.

6. Dimensions and Tolerances

6.1 Dimensions are as indicated.

6.2 Tolerance— $\pm 1/16$ in. (1.5 mm).

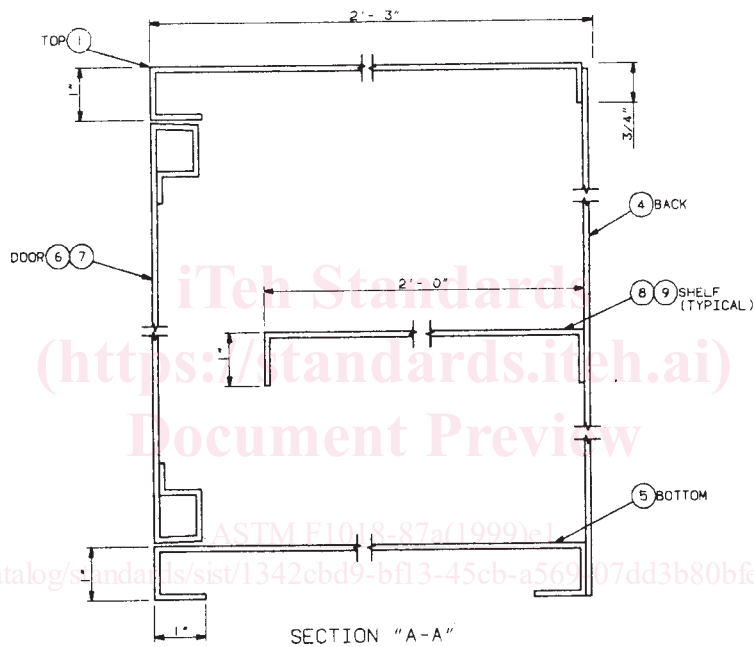
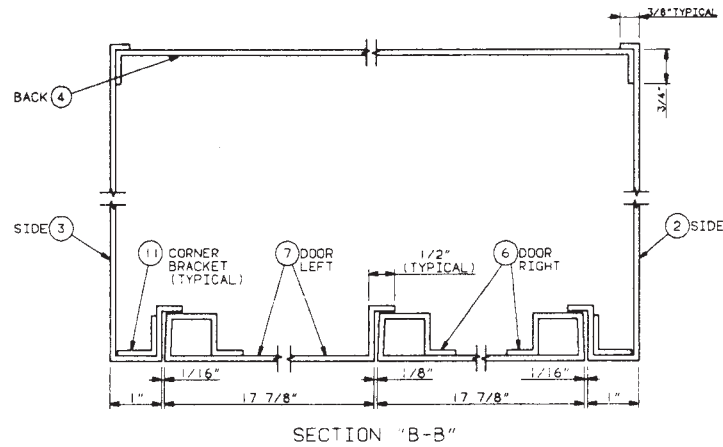


FIG. 3 Emergency Gear Stowage Locker—Types 2, 3, and 4 (Section "A-A")

7. Workmanship, Finish, and Appearance

7.1 Entire assembly shall be free of weld spatter, slag, splinters, sharp edges, burrs, projections, and other defects that may be hazardous to personnel.

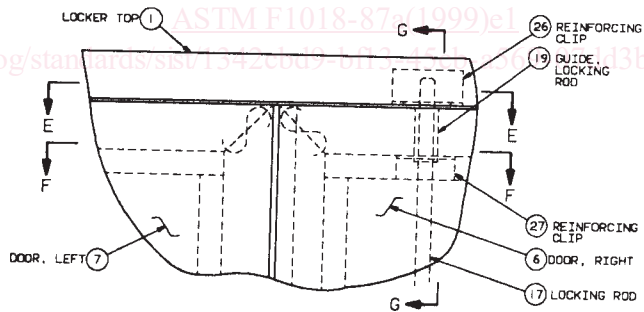
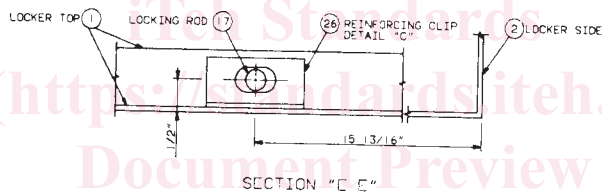
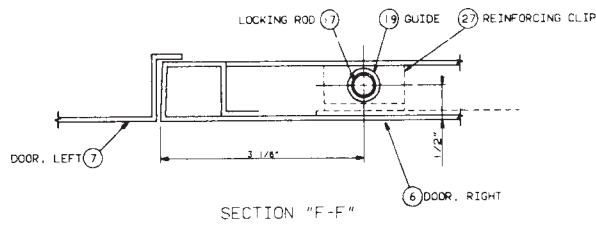
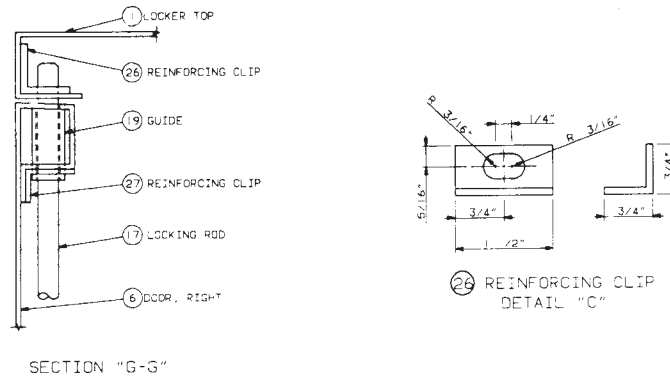
7.2 The locker shall be cleaned after assembly to a commercial finish in accordance with SSPC-SP6.

7.3 Unless otherwise required by the ordering documents, the unit shall have the manufacturer's standard baked-on enamel finish.

7.3.1 The color shall be specified in the ordering documents.

8. Keywords

8.1 emergency gear; fireman's locker; fireman's outfit; locker; steel locker; stowage locker



NOTE 1—1 in. = 25.4 mm.

FIG. 5 Lock Bolt