



Designation: D6726 – 15

Standard Guide for Conducting Borehole Geophysical Logging— Electromagnetic Induction¹

This standard is issued under the fixed designation D6726; the number immediately following the designation indicates the year of original adoption or, in the case of revision, the year of last revision. A number in parentheses indicates the year of last reapproval. A superscript epsilon (ϵ) indicates an editorial change since the last revision or reapproval.

1. Scope*

1.1 This guide is focused on the general procedures necessary to conduct electromagnetic-induction, induction, electromagnetic-conductivity, or electromagnetic-resistivity logging (hereafter referred as induction logging) of boreholes, wells, access tubes, caissons, or shafts (hereafter referred as boreholes) as commonly applied to geologic, engineering, groundwater and environmental (hereafter referred as geotechnical) explorations. Induction logging for minerals or petroleum applications is excluded.

1.2 This guide defines an induction log as a record of formation electrical conductivity or resistivity with depth as measured by the induction method in a borehole.

1.2.1 Induction logs are treated quantitatively and should be interpreted with other logs and data whenever possible.

1.2.2 Induction logs are commonly used to: (1) delineate lithology; (2) evaluate formation water quality and effective porosity, and (3) correlate stratigraphy between boreholes.

1.3 This guide is restricted to induction measurements that are at a frequency of less than 50 KHz; are non-directional; and average formation properties around the circumference of the borehole; which are the most common induction measurement devices used in geotechnical applications.

1.4 This guide provides an overview of induction logging including (1) general procedures; (2) specific documentation; (3) calibration and standardization; and (4) log quality and interpretation.

1.5 To obtain additional information on induction logs see References section in this guide.

1.6 This guide offers an organized collection of information or a series of options and does not recommend a specific course of action. This guide should not be used as a sole criterion for induction logging and does not replace education, experience, and professional judgment. Induction logging procedures

should be adapted to meet the needs of a range of applications and stated in general terms so that flexibility or innovation are not suppressed. Not all aspects of this guide may be applicable in all circumstances. This ASTM standard is not intended to represent or replace the standard of care by which the adequacy of a given professional service must be judged without consideration of a project's many unique aspects. The word standard in the title of this document means that the document has been approved through the ASTM consensus process.

1.7 *Units*—The values stated in either inch-pound units or SI units [given in brackets] are to be regarded separately as standard. The values stated in each system may not be exact equivalents; therefore, each system shall be used independently of the other. Combining values from the two systems may result in non-conformance with the standard. Add, if appropriate, “Reporting of test results in units other than SI shall not be regarded as nonconformance with this standard.”

1.8 *This standard does not purport to address all of the safety concerns, if any, associated with its use. It is the responsibility of the user of this standard to establish appropriate safety and health practices and determine the applicability of regulatory requirements prior to use.*

2. Referenced Documents

2.1 *ASTM Standards*:²

[D653 Terminology Relating to Soil, Rock, and Contained Fluids](#)

[D5088 Practice for Decontamination of Field Equipment Used at Waste Sites](#)

[D5608 Practices for Decontamination of Field Equipment Used at Low Level Radioactive Waste Sites](#)

[D5753 Guide for Planning and Conducting Borehole Geophysical Logging](#)

3. Terminology

3.1 *Definitions*:

¹ This guide is under the jurisdiction of ASTM Committee D18 on Soil and Rock and is the direct responsibility of Subcommittee D18.01 on Surface and Subsurface Characterization.

Current edition approved Dec. 1, 2015. Published January 2016. Originally approved in 2001. Last previous edition approved in 2007 as D6727 – 01(2007). DOI: 10.1520/D6726-15.

² For referenced ASTM standards, visit the ASTM website, www.astm.org, or contact ASTM Customer Service at service@astm.org. For *Annual Book of ASTM Standards* volume information, refer to the standard's Document Summary page on the ASTM website.

*A Summary of Changes section appears at the end of this standard

3.1.1 For definitions of common technical terms in this standard, refer to Terminology **D653**.

3.2 *Definitions of Terms Specific to This Standard:*

3.2.1 *depth of exploration, n*—in geophysics, the radial distance from the measurement point to a point where the predominant measured response may be considered centered (not to be confused with the depth below the surface).

3.2.2 *vertical resolution, n*—the minimum thickness that can be separated into distinct units.

3.2.3 *volume of exploration, n*—in geophysics, a volume, which is non-spherical and has gradation boundaries, that contributes 90 percent of the measured response, and is determined by a combination of theoretical and empirical modeling.

4. Summary of Guide

4.1 This guide applies to induction logging.

4.2 This guide briefly describes the significance and use, apparatus, calibration and standardization, procedures and reports for conducting induction logging.

5. Significance and Use

5.1 An appropriately developed, documented, and executed guide is essential for the proper collection and application of induction logs. This guide is to be used in conjunction with Guide **D5753**.

5.2 The benefits of its use include improving: selection of induction logging methods and equipment; induction log quality and reliability; and usefulness of the induction log data for subsequent display and interpretation.

5.3 This guide applies to commonly used induction logging methods for geotechnical applications.

6. Interferences

6.1 Most extraneous effects on induction logs are caused by logging procedures, instrument problems, borehole conditions, and geologic conditions.

6.2 Logging procedures include incorrect range setting, incorrect calibration, and logging too fast.

6.3 Instrument problems include electrical leakage and temperature drift.

6.3.1 Induction probes need to warm up and stabilize with the borehole environment. Some probes record internal electronic temperature; this temperature record should not be confused with a borehole fluid temperature log.

6.4 Effects of borehole fluid is dependent on probe design, borehole diameter, and borehole-fluid conductivity. Induction measurements can be made in air-, water-, or mud-filled boreholes. Induction probes are designed to minimize effects of borehole fluid. Conductivity of borehole fluid will significantly affect induction response only in larger diameter boreholes (typically, greater than 8 to 10 in. [20 to 25 cm] diameter).

6.4.1 Effects of mud-invasion zone is dependent on probe design, invasion depth, and mud and formation conductivity.

6.4.2 Steel or other conductive material interferes and may prohibit induction measurements. PVC casing and other non-conductive casing does not affect induction response. Clay seals and sand/gravel packs may affect induction response in larger diameter boreholes (typically, greater than 8 to 10 in. [20 to 25 cm] diameter).

6.5 *Geologic Conditions:*

6.5.1 In high-conductivity formations and groundwater, the electrical conductivity measured by induction is less than the true electrical conductivity due to skin effects. Some probes correct for skin effect assuming a homogeneous medium.

6.5.2 In steeply dipping formations (greater than 60 degrees), electrical anisotropy affects apparent bed thickness and location of bed contacts and corrections need to be applied.

6.6 Theoretical and empirical tool response curves and inversion algorithms may be applied to correct for many interferences.

7. Apparatus

7.1 A geophysical logging system has been described in the general guide (Section 6, Guide **D5753**).

7.2 Induction logs are collected with probes that have electromagnetic transmitter and receiver coils (**Fig. 1**).

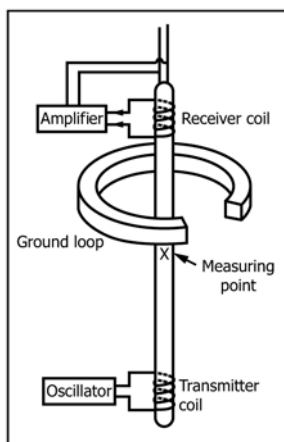


FIG. 1 Electromagnetic-Induction Logging System (1)

7.2.1 Transmitter and receiver coils typically are spaced about 20 in. [0.5 m] apart. In deep-induction configurations, coils are spaced at about 40 in [1 m] apart.

7.2.2 The transmitter coil emits an electromagnetic signal in the range of 20 to 40 kHz that induces eddy currents in the medium surrounding the borehole.

7.2.3 The receiver coil senses the primary and secondary magnetic fields.

7.2.4 Strength of the secondary magnetic field is a function of the electrical conductivity of the surrounding medium.

7.2.5 One or more additional coils are used to cancel the primary field, reduce sensitivity to the borehole fluid, and focus the horizontal response.

7.3 Volume of Exploration and Depth of Exploration of induction measurements are dependent on coil configuration and increases with increased spacing between transmitter and receiver coils.

7.3.1 The Depth of Exploration typically varies from 20 to 30 in. [50 to 75 cm] (Fig. 2), but is up to 130 in. [325 cm] in deep-induction configurations.

7.3.2 The radial distance from which log response is negligible typically varies from 3 to 5 in. [7.5 to 12.5 cm], but is 20 in. [50 cm] or more in deep-induction configurations.

7.3.3 Induction probes used for geotechnical applications typically can be logged inside of a 2 in. [5 cm] diameter monitoring well.

7.3.4 Dual-induction probes have coil configurations that measure two different depths of explorations including deep induction and generally are greater than 2 in. [5 cm] in diameter.

7.4 Vertical Resolution of induction measurements is dependent on coil configuration.

7.4.1 Vertical Resolution is approximated by dividing the transmitter-receiver coil spacing by 1.5.

7.4.2 Vertical Resolution typically is about 14 in. [35 cm].

7.4.3 Vertical Resolution is up to 6 ft [1.8 m] in deep-induction configurations.

7.5 Typical accuracy is within 5 percent at 30 mS/m.

7.6 Additional logs may also be run in combination with induction.

7.6.1 Induction probes commonly have the capability to simultaneously record gamma along with electrical conductivity.

7.6.2 Induction and gamma logs can be collected in open or boreholes cased with non-conductive materials (PVC, fiberglass, etc.) that are air, water, or mud filled.

7.6.3 Some induction probes may also record magnetic susceptibility simultaneously with the electric conductivity measurement. Note induction probes typically are not optimized for magnetic susceptibility measurements.

7.7 Measurement resolution of induction probes is determined by probe design. Measurement resolution is typically 0.01 mS/m.

7.8 A variety of induction logging equipment available is for geotechnical explorations. It is not practical to list all of the sources of potentially acceptable equipment.

8. Calibration and Standardization of Electromagnetic-Induction Logs

8.1 General:

8.1.1 National Institute of Standards and Technology (NIST) calibration and standardization procedures do not exist for induction logging.

8.1.2 Induction logs can be used in a qualitative (for example, comparative) or quantitative manner depending upon the project objectives.

8.1.3 Induction calibration methods and frequency shall be sufficient to meet project objectives.

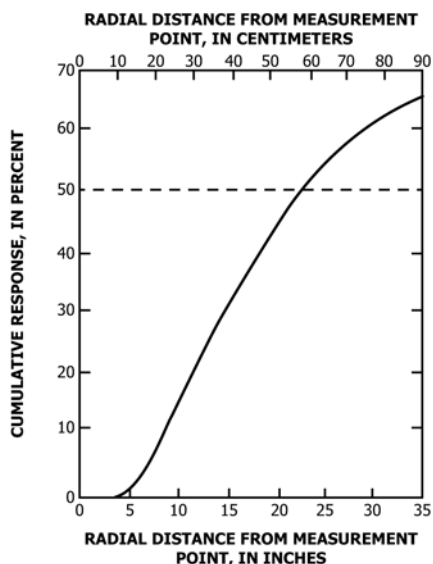


FIG. 2 Cumulative Response Versus Radial Distance for a Typical Electromagnetic-Induction Probe Showing Depth of Exploration and Radial Focusing (2)

8.1.3.1 Calibration and standardization should be performed each time an induction probe is suspected to be damaged, modified, repaired, and at periodic intervals.

8.1.3.2 Induction probe calibration is sensitive to the effects of temperature, humidity, calibration coil position, and conductive material.

8.2 Calibration is the process of establishing values for induction response and is accomplished in free air and with representative physical models. Calibration data values related to the physical properties are recorded in units (for example, counts per second) that are converted to units of electrical conductivity mS/m.

8.2.1 At least two, and preferably more, values, which approximate the anticipated operating range, are needed to establish a calibration curve (for example, 10 and 100 mS/m).

8.2.2 Typical tolerances for calibration are 5 percent of measured standard.

8.2.3 Calibration is done in an area free of conductive objects within the Volume of Exploration.

8.2.4 Free-air calibration check to approximately zero electrical conductivity is accomplished by suspending the probe in air where humidity is minimal and away from conductive material.

8.2.5 The physical model typically used to calibrate induction response is a calibration ring.

8.2.5.1 A calibration ring is a ring of non-conductive material (plastic or wood), which has a wire loop with a resistance that produces a known response.

8.2.5.2 The position of the calibration ring on the probe must be duplicated for accurate calibration. Calibration rings designed not be positioned at the center of the measurement point are more sensitive to changes in their position.

8.2.6 Calibration also can be established in a body of water such as a lake with a known electrical conductivity that is large enough to be infinite with respect of the Volume of Exploration of the probe.

8.2.7 Calibration should be performed when the probe temperature is as close to the borehole temperature as possible. This is most readily performed by recalibrating immediately after logging a borehole.

8.3 Standardization is the process of checking logging response to show evidence of repeatability and consistency.

8.3.1 Calibration ensures standardization.

8.3.2 A representative borehole may be used to periodically check induction probe response providing the borehole and surrounding environment does not change with time or changes and their effects on induction response can be documented.

9. Procedure

9.1 See Section 8, Guide [D5753](#) for planning a logging program, data formats, personnel qualifications, field documentation, and header documentation.

9.1.1 Induction specific information (for example, coil spacing, transmitter frequency) should be documented.

9.2 Identify induction-logging objectives.

9.3 Select appropriate equipment to meet objectives.

9.3.1 Induction logs are commonly run with gamma logs to aid in lithologic and water-quality interpretations. Although less commonly run, neutron logs also aid interpretations.

9.3.2 Combination induction and gamma probes commonly have the induction transmitter and receiver in the lower part and the gamma detector in the upper part. This may be inappropriate for shallow boreholes and induction and gamma may have to be run separate to meet project objectives.

9.3.3 Induction probes typically are run free-hanging where the probes lies against one side of the borehole. Centralizers constructed of plastic or other non-conductive material are sometimes used in boreholes 6 in. [15 cm] diameter or greater. Induction response may be somewhat different depending on the method used (for example, free-hanging or centralized).

9.3.4 Induction-probe and cable decontamination is addressed according to project specifications (see Practice [D5088](#) for non-radioactive waste sites and Practice [D5608](#) for low-level radioactive waste sites).

9.4 Select when in the logging sequence the induction probe is run.

9.4.1 Induction probes are typically run after borehole image logs (such as optical televiewer, analog or digital borehole camera) and/or fluid property logs are run to minimize disturbance to the borehole fluid that could degrade the quality of such logs.

9.4.2 Induction probes are run before any probe utilizing nuclear sources and more expensive centralized probes to ensure borehole stability whenever possible.

9.5 Induction-probe operation typically is checked before the start of each run.

9.6 Select and document the depth reference point.

9.6.1 The selected depth reference point needs to be stable and accessible (for example, land surface, top of casing).

9.7 Determine and document probe zero reference point (for example, top of probe or cablehead) and depth offset to induction measurement point.

9.7.1 The measurement point of the induction probe is midway between the transmitter and receiver coils ([Fig. 1](#)). This point, which is not visible on the outside of the probe, commonly is marked and is referenced to the probe zero reference.

9.7.2 Position the probe zero reference point with respect to the depth reference point and initialize depth recording/display systems.

9.8 Select horizontal and vertical scales for log display to meet project objectives.

9.8.1 Preferred horizontal scale divisions are multiples of 2 or 5 such that the log value can be easily determined on the plot (0-25, 0-400, etc.)

9.8.2 Preferred vertical scales are multiples of 2 or 5 such that the depth can be easily determined on the plot (for example, 1/5, 1/10. . . . 1/100, etc.).

9.9 Select digitizing interval to meet project objectives.

9.9.1 Digitizing interval needs to be at least as small as the Vertical Resolution of the induction probe, which is typically about 1.2 ft [35 cm].