



Designation: **D7423 – 09 (Reapproved 2014) D7423 – 16**

Standard Test Method for Determination of Oxygenates in C2, C3, C4, and C5 Hydrocarbon Matrices by Gas Chromatography and Flame Ionization Detection¹

This standard is issued under the fixed designation D7423; the number immediately following the designation indicates the year of original adoption or, in the case of revision, the year of last revision. A number in parentheses indicates the year of last reapproval. A superscript epsilon (ϵ) indicates an editorial change since the last revision or reapproval.

1. Scope-~~Scope~~*

1.1 This test method covers the gas chromatographic procedure for the quantitative determination of organic oxygenates in C2, C3, C4, and C5 matrices by multidimensional gas chromatography and flame ionization detection. This test method is applicable when the hydrocarbon matrices have a final boiling point not greater than ~~200°C; 200 °C~~. Oxygenate compounds include, but are not limited to, those listed in **Table 1**. The linear working range for oxygenates is ~~0.500.50 mg/mg/kg-kg~~ to ~~100.100 mg mg/kg/kg~~.

1.2 This test method is intended to determine the mass concentration of each oxygenate in the hydrocarbon matrix. Oxygenate compound identification is determined by reference standards and column elution retention order.

1.3 The values stated in SI units are to be regarded as standard. No other units of measurement are included in this standard.

1.4 *This standard does not purport to address all of the safety concerns, if any, associated with its use. It is the responsibility of the user of this standard to establish appropriate safety and health practices and determine the applicability of regulatory limitations prior to use.*

2. Referenced Documents

2.1 *ASTM Standards:*²

[D1265 Practice for Sampling Liquefied Petroleum \(LP\) Gases, Manual Method](#)

[D1835 Specification for Liquefied Petroleum \(LP\) Gases](#)

[D4175 Terminology Relating to Petroleum Products, Liquid Fuels, and Lubricants](#)

[D6299 Practice for Applying Statistical Quality Assurance and Control Charting Techniques to Evaluate Analytical Measurement System Performance](#)

[D6300 Practice for Determination of Precision and Bias Data for Use in Test Methods for Petroleum Products and Lubricants](#)

[D6849 Practice for Storage and Use of Liquefied Petroleum Gases \(LPG\) in Sample Cylinders for LPG Test Methods](#)

[E177 Practice for Use of the Terms Precision and Bias in ASTM Test Methods](#)

[E355 Practice for Gas Chromatography Terms and Relationships](#)

3. Terminology

3.1 Additional terminology related to the practice of gas chromatography can be found in Practice **E355**.

3.2 *Definitions:*

3.2.1 *liquefied petroleum gas (LPG), n*—a mixture of normally gaseous hydrocarbons, predominantly propane or butane, or both, that has been liquefied by compression or cooling, or both, to facilitate storage, transport, and handling. **D4175**

3.2.2 *oxygenate, n*—an oxygen-containing ashless organic compound, such as an alcohol or ether, which may be used as a fuel or fuel supplement. **D4175**

3.3 *Definitions of Terms Specific to This Standard:*

¹ This test method is under the jurisdiction of ASTM Committee **D02** on Petroleum Products, Liquid Fuels, and Lubricants and is the direct responsibility of Subcommittee **D02.D0.04** on C4 and C5 Hydrocarbons.

Current edition approved ~~May 1, 2014~~Feb. 15, 2016. Published ~~July 2014~~March 2016. Originally approved in 2009. Last previous edition approved in ~~2009~~2014 as ~~D7423 – 09~~D7423 – 09 (2014). DOI: ~~10.1520/D7423-09R14~~10.1520/D7423-16.

² For referenced ASTM standards, visit the ASTM website, www.astm.org, or contact ASTM Customer Service at service@astm.org. For *Annual Book of ASTM Standards* volume information, refer to the standard's Document Summary page on the ASTM website.

*A Summary of Changes section appears at the end of this standard

TABLE 1 Oxygenates and Typical Retention Times

Components	Retention Time (min)
Dimethyl ether	6.18
Diethyl ether	8.44
Acetaldehyde	8.89
Ethyl tert-butyl ether	10.66
Methyl tert-butyl ether (MTBE)	10.92
Diisopropyl ether	11.22
Propionaldehyde (Propanal)	12.00
Tertiary amyl methyl ether (TAME)	13.19
Propyl ether	14.00
Isobutylaldehyde	14.10
Butylaldehyde	14.50
Methanol	14.91
Acetone	15.39
Isovaleraldehyde	16.00
Valeraldehyde	16.10
2-Butanone (MEK)	17.14
Ethanol	17.51
N-propyl alcohol and isopropanol	19.20 (co-elution)
Allyl Alcohol	20.00
Isobutanol, Tert-butyl alcohol, Sec-Butanol	20.24 (co-elution)
N-butanol	20.84

3.3.1 *Dean's switching method*—representative aliquot of sample is injected on-column using a sample valve (or via a gas chromatograph split inlet). The sample passes onto a nonpolar column, which elutes the lighter hydrocarbons in boiling point order to the analytical column and backflushes the heavier hydrocarbons to vent. The oxygenate compounds elute from the analytical column and are detected via a flame ionization detector.

3.3.2 *Dean's switching method direct inject*—gas chromatographic valve configuration equipped with a valve connected directly to the precolumn. This technique is commonly used for the determination of oxygenates in ethene and propene concentrates. This configuration provides the lowest detection limits such as those commonly required for ethene and propene concentrates.

3.3.3 *Dean's switching method equipped with a split inlet*—gas chromatographic valve configuration equipped with a gas chromatograph split inlet for sample introduction into the precolumn. This configuration is commonly used for the determination of oxygenates in C5 hydrocarbon mixtures. This technique using this configuration might not provide the detection limits noted in the scope of this test method. If lower detection limits are required, then the user should consider using the on-column valve direct injection technique.

3.3.4 *valve cut method*—commonly used for the determination of oxygenates in C4 hydrocarbon mixtures. This technique using a split inlet might not provide the detection limits noted in the scope of this test method. If lower detection limits are required, then the user should consider using the on-column valve direct injection technique.

3.3.5 *valve cut method equipped with a split inlet*—representative aliquot of sample is injected via a gas chromatograph split inlet for sample introduction into the precolumn. The sample passes onto a nonpolar column, which elutes the lighter hydrocarbons in boiling point order to the analytical column and the heavier hydrocarbons to vent. The oxygenate compounds elute from the analytical column and are detected via a flame ionization detector.

3.4 Acronyms:

3.4.1 *DIPE*—diisopropylether.

3.4.2 *ETBE*—ethyl *tert*-butylether.

3.4.3 *MEK*—2-butanone.

3.4.4 *MTBE*—methyl *tert*-butylether.

3.4.5 *TAME*—*tert*-amyl methylether.

3.4.6 *PLOT*—porous layer open tubular capillary column.

3.4.7 *WCOT*—wall coated open tubular capillary column.

4. Summary of Test Method

4.1 This test method shall be configured using either the Dean's switching method or the valve cut method. Each method shall be configured using an on-column valve direct inject technique or a gas chromatograph split inlet. The on-column valve direct inject technique is configured by connecting the head of the precolumn directly to the injection valve.

4.2 The detector response and retention times for each oxygenate peak in a calibration standard is measured and used to externally calibrate the flame ionization detector response. The concentration of each oxygenate is calculated by the external standard technique. Calibration materials are listed in [Table 1](#).

5. Significance and Use

5.1 The determination of oxygenates is important in the manufacture of ethene, propene, 1-3 butadiene, C4 hydrocarbons, and C5 hydrocarbons. Alcohols, ethers, aldehydes, and ketones are trace impurities in these hydrocarbons. Oxygenates decrease catalyst activity in downstream polymerization processes.

6. Apparatus

6.1 *Gas Chromatograph*—Any gas chromatograph equipped with a flame ionization detector (FID) and having sensitivity of 0.01 mg/kg . The gas chromatograph must be capable of linear temperature control from 50°C to 320°C for the capillary column oven. The gas chromatograph must be capable of controlling multiple valve events. Carrier gas flow controllers and or electronic pressure control modules shall be capable of precise control where the required flow rates are low (see [Table 2](#)). Pressure control devices and gages shall be capable of precise control for the typical pressures required. The temperature program rate must repeat to within 0.1°C and provide retention time repeatability of 0.05 min throughout the temperature program.

6.2 Carrier Gas Preparation:

6.2.1 Moisture present in the carrier gas causes chromatographic problems. The oxygenates column has very high retention. Due to this characteristic, moisture and trace impurities in the carrier gas are trapped at the beginning of this column. Therefore carrier gas filters or the use of any device which can be used to eliminate trace levels of oxygen and water are strongly recommended. Additionally, frequent reconditioning and longer than usual column condition times may be necessary to maintain the performance of this column for the most accurate results from this test method.

6.2.2 *Carrier Gas Filters*—Oxygen and molecular sieve type moisture filters.

6.3 Columns:

6.3.1 *Nonpolar (Precolumn) Column*—This column performs a pre-separation of the light hydrocarbon fraction up to and including TAME. Any column with equivalent or better chromatographic efficiency and selectivity to that described in [6.3.2](#) can be used.

6.3.2 *WCOT Methyl Silicone Column*, 25 m long by 0.53 mm inside diameter fused silica WCOT column with a 1.0 μm film thickness of crosslinked methyl siloxane. A column of this description was used in the repeatability study referred to in [Section 16](#).

6.4 *Polar (Analytical) Column*—This column performs a separation of the oxygenates from volatile hydrocarbons in the same boiling point range. The oxygenates and remaining hydrocarbons are backflushed to vent through the nonpolar column. Any column with equivalent or better chromatographic efficiency and selectivity to that described in [6.4.1](#) can be used.

6.4.1 *Oxygenates PLOT column*, 10 m long by 0.53 mm inside diameter, with a stationary phase composed of a barium sulfate adsorbent mixture, coated onto a fused silica column. At a minimum the column should have sufficient retention for methanol that it elute after n-tridecane (RI > 1300) and must have sufficient efficiency and capacity to resolve the oxygenates listed in [Table 1](#) to provide accurate quantitative results equivalent to those shown in [Section 16](#). A column of this description was used in the repeatability study referred to in [Section 16](#).

6.5 Sample Introduction:

TABLE 2 Chromatographic Operating Conditions

Parameter	Dean's Switch (Fig. 1)	Dean's Switch (Fig. 2)	Valve Cut (Fig. 3)
Valve 1°C	Ambient	Ambient	Ambient
Valve 1 Sample Size, μL	2	2	2
Valve 2°C	150	150	150
Valve 2 Sample Size, $\mu\text{L} - \text{mL}$	500 – 2	500 – 2	500 – 2
Injector, °C	Not Applicable	250	250
Split Ratio	Not Applicable	1:1 - x^A	1:1 - x^A
Backflush, min	2.0 – 4.0	2.0 – 4.0	2.0 – 4.0
Column Oven Standby, °C	200	200	200
Initial Column Oven, °C	50	50	50
Initial Hold, min	5	5	5
Rate, °C/min	10	10	10
Final Column Oven, °C	240	240	220
Final Hold, min	5	5	5
Precolumn Flow, mL/min	5	5	5
Analytical Column Flow, mL/min	7	7	7
Needle Valve 1 Flow, mL/min	15	15	Not Applicable
Needle Valve 2 Flow, mL/min	6	6	Not Applicable
Detector, °C	300	300	300
Detector Range	B	B	B

^A Split ratio shall be experimentally determined using appropriate gravimetric standards to obtain the desired minimum detection requirements.

^B Detector Range—Adjust the detector range to a setting which shall provide sufficient voltage to assure the detection of small concentrations of each oxygenate but as to avoid detector signal saturation.

6.5.1 *Switching Valve*—A valve with an operating temperature of ~~225°C~~225 °C and operating pressure of ~~27.57 bar~~27.57 bar, to be located within a heated enclosure or in the main oven. The valve shall be of low volume design and not contribute significantly to chromatographic deterioration.

6.5.2 *Liquid Sampling Valve*—A valve with an operating temperature of ~~75°C~~75 °C and operating pressure of ~~68.94 bar~~68.94 bar, to be located outside of the oven and used in sampling propane concentrates, butane samples or other LPG samples. The repeatability of this test is dependent upon a consistent cylinder pressure. It is strongly suggested that the use of a floating piston cylinder be used and that the sample be pressurized to 13.78 bar above the vapor pressure of the sample prior to sampling.

6.5.3 *Low Pressure Liquid Sampling*—A valve syringe adapter may be used to sample low vapor pressure liquids such as C5 concentrates.

6.5.4 *Low Pressure Gas Sampling Valve*—A valve with an operating temperature of ~~225°C~~225 °C and operating pressure of 27.57 bar to be placed in a heated enclosure maintained at approximately ~~150°C~~150 °C and used to sample ethene vapor. An external sample loop is installed on this valve. A 1000 µL sample loop has been used successfully. The sample loop sample size shall be sized experimentally to provide desired detection limits. This valve must reproduce to within 5 percent relative standard deviation on each component.

6.5.5 *Heated Valve Enclosure*—Any enclosure capable of maintaining the valve and sample loop at ~~150°C~~150 °C.

6.5.6 *Connecting Tees*—Any tees that can provide an inert connection.

6.5.7 *Tubing*—Any tubing capable of providing an inert connection.

6.5.8 *Needle Valve*—Micrometering valve capable of low flow control ~~22 mL/min~~ to ~~90-90 mL mL/min/min~~.

6.6 *Data Acquisition*—Any computerized data acquisition system shall be used for peak area integration and graphic presentation of the chromatogram. Alternatively any integrator system can also be used for chromatographic peak area integration.

7. Reagents and Materials

7.1 *Purity of Reagents*—Before preparing the calibration standards, determine the purity of the oxygenate stocks and make corrections for the impurities found. Whenever possible, use stocks of 98 % purity or better. The calibration materials are listed in [Table 1](#).

7.2 *Calibration Standard Mixture*—A standard mixture containing known concentrations of each oxygenate listed in [Table 1](#) should be prepared gravimetrically. This mixture shall be used as an external calibration standard.

7.3 *Compressed Hydrogen*—Less than ~~1 mg/kg~~ hydrocarbon impurities for FID fuel gas.

7.4 *Compressed Helium*—Gas purity 99.999 %. Note that helium supplies often contain low level amounts of water. Water can dramatically deteriorate the performance of the analytical column (oxygenates column). It is strongly recommended that the use of a molecular sieve or other suitable water removal system be implemented to eliminate the possibility of contaminating the analytical column with oxygen or water.

7.5 *Compressed Air*—Zero grade (gas purity ~~99.999 %~~99.999 %).

7.6 *Instrument Air*—Compressed air for pneumatic actuation of valves.

8. Sampling

8.1 Every effort should be made to ensure that the sample is representative of the source from which it is taken. Follow the recommendations of Practice [D1265](#), [D1835](#), [D6849](#) or their equivalent, when obtaining and storing samples from bulk storage or pipelines.

9. Installation of Carrier Gas Filters

9.1 The carrier gas shall require pretreatment with an oxygen and water removal system.

9.2 On the gas chromatograph carrier gas supply line, install the oxygen and water removal filters. Any filters, traps or getter type device can be used to assure removal of both oxygen and water from the carrier gas used for this gas chromatograph.

10. Preparation of Apparatus and Establishment of Conditions

10.1 Install the gas chromatograph according to the manufacturer's instructions. Set the gas chromatograph parameters according to those noted in [Table 2](#).

10.2 *Column Installation:*

10.2.1 Install the column, tubing and valve configuration as shown in [Figs. 1-3](#), as desired. Apply carrier gas flows by slowly pressurizing the column. (**Warning**—Avoid pressure shocks, especially in combination with electronic pressure controlled flow. When setting flows add approximately 10 kPa per second while checking flows.)

10.2.2 Condition the column for at least 16 h under carrier gas flow, with a multi-cycle ramped temperature program technique starting at ~~50°C~~50 °C and increasing to ~~100°C~~100 °C hold for 1 h then increase and ramp the temperature by ~~10°C/min~~10 °C/min up to ~~320°C~~320 °C.

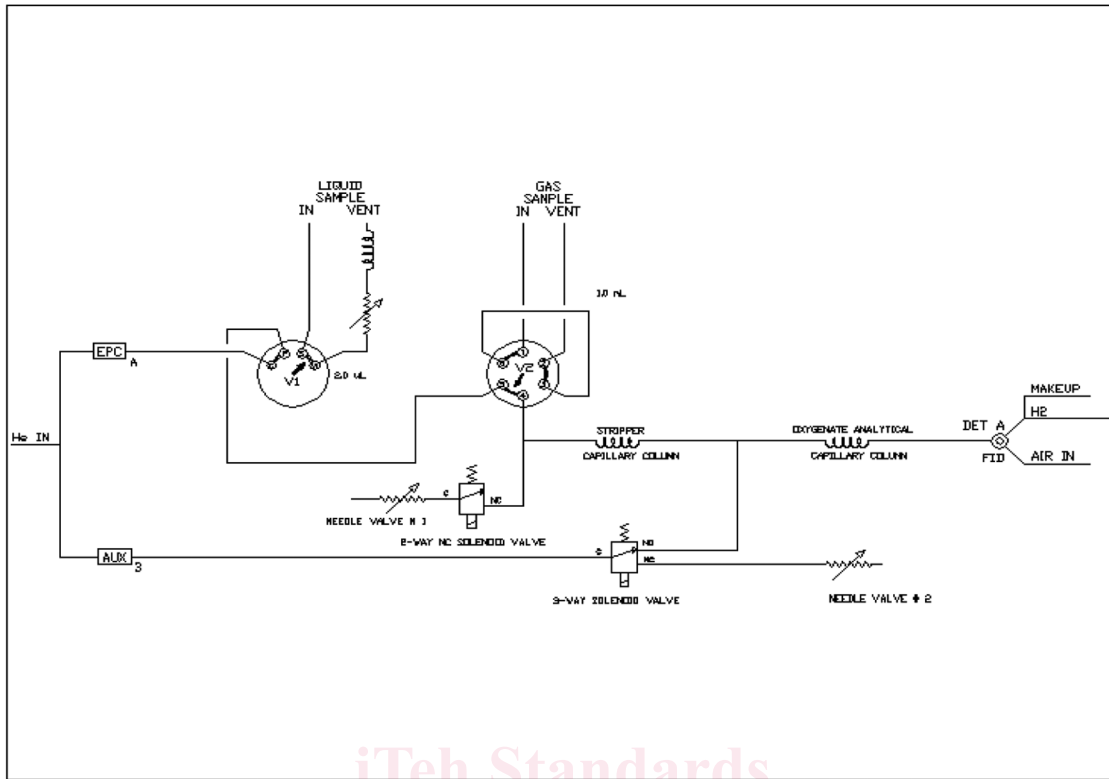


FIG. 1 Schematic of a Low Level Oxygenates Multidimensional Column Configuration (Dean's Switching Method Direct Inject Technique)

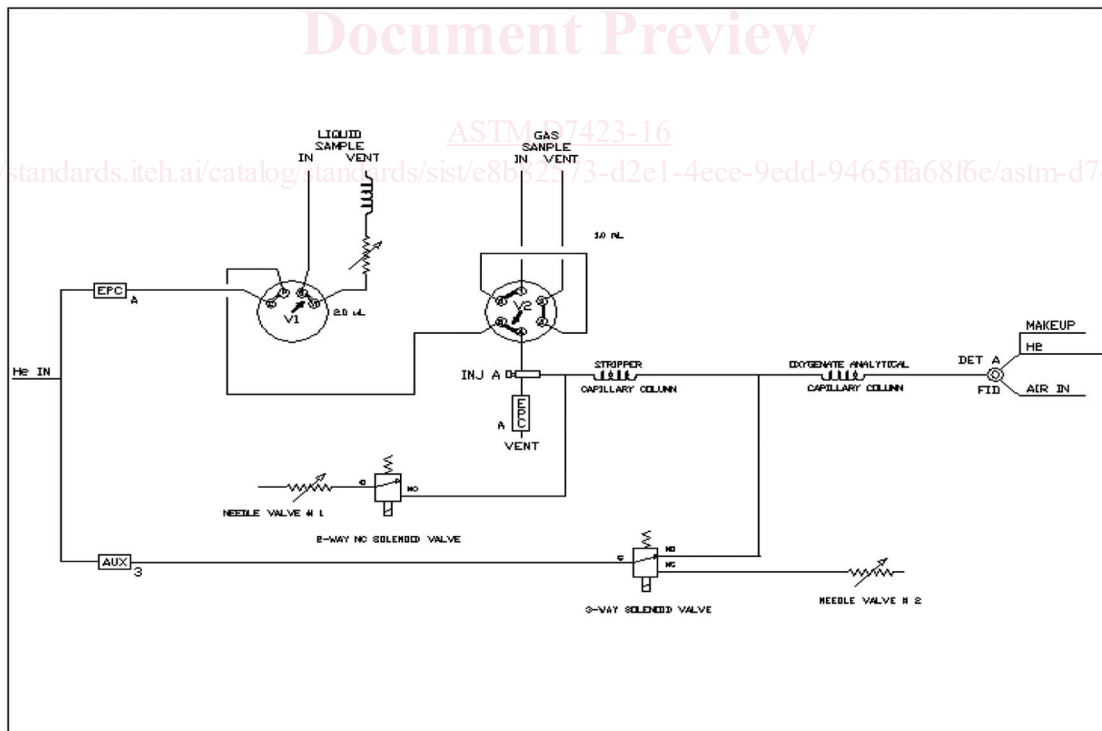


FIG. 2 Schematic of a Low Level Oxygenates Multidimensional Column Configuration (Dean's Switching Method Split Inlet)

10.3 Dean's Switching Method Direct Inject or Split Inlet—Flow Setting:

10.3.1 Dean's switching system flow tuning using column configuration shown in Fig. 1. Equilibrate the column oven to 50°C. 50 °C. Place the two-way valve in the normally off position preventing the system from backflushing out through needle

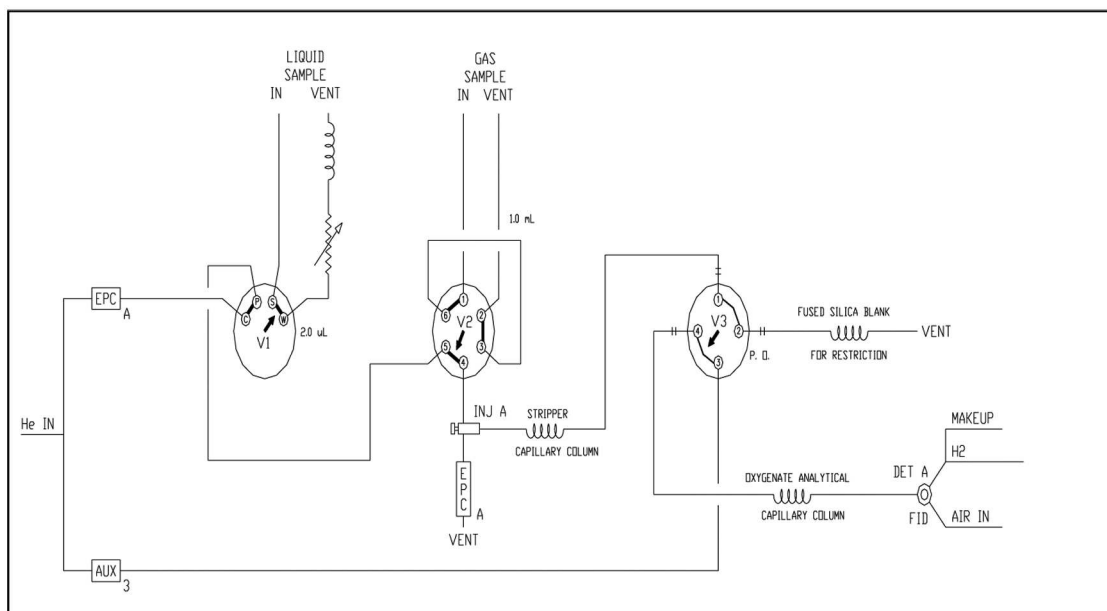


FIG. 3 Schematic of a Low Level Oxygenates Multidimensional Column Configuration (Valve Cut Method)

valve #1. Place the three-way solenoid valve in the on position thereby allowing flow to pass from the secondary carrier flow out through needle valve #2. Set the needle valve #2 vent flow to $77 \text{ mL}/\text{min}$. Measure flows at the flame ionization detector vent. Adjust the primary mass flow controller (EPC A) flow to approximately $55 \text{ mL}/\text{min} \pm 0.50.5 \text{ mL}/\text{min}$. Place the three-way solenoid in the off position and adjust secondary carrier flow controller (Aux 3) to yield a combined total flow of $1212 \text{ mL}/\text{min}$ through the flame ionization detector vent. Place the two-way solenoid valve in the on position and set backflush needle valve #1 vent flow at $1515 \text{ mL}/\text{min}$. Place the two-way solenoid valve back to the off position. Turn detector flows on and light the flame ionization detector.

10.4 Dean's Switching Method Direct Inject or Split Inlet—Determine the Time to Backflush:

10.4.1 Initially set the two-way valve backflush time to 4.0 min. With the two-way valve off, inject an aliquot of a mixture containing at least $5050 \text{ mg}/\text{kg}$ of TAME. Verify the retention time of the TAME peak at approximately 13 min . Experimentally determine the time required for the complete elution of TAME, by decreasing the backflush time in 0.2 min increments prior to each successive injection. Set the two-way valve backflush time such that the time allows for the complete elution of TAME. The chromatogram should appear similar to the one illustrated in Fig. 4.

10.5 Valve Cut Method—Flow Setting:

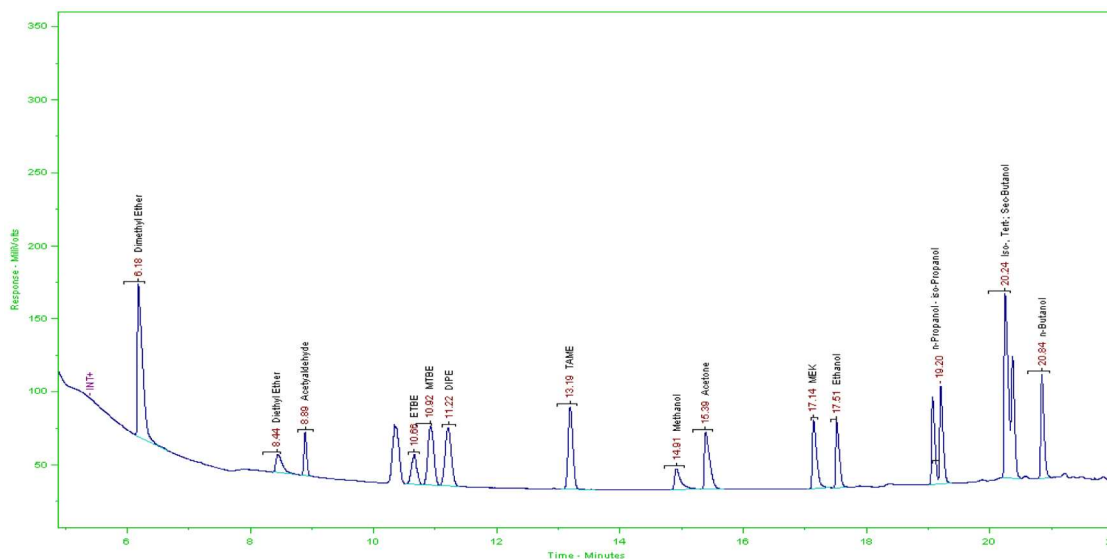


FIG. 4 Typical Oxygenates Chromatogram (see Table 3 and Section 16 for concentration data)