



Standard Specification for Construction of Fire and Foam Station Cabinets¹

This standard is issued under the fixed designation F 1333; the number immediately following the designation indicates the year of original adoption or, in the case of revision, the year of last revision. A number in parentheses indicates the year of last reapproval. A superscript epsilon (ε) indicates an editorial change since the last revision or reapproval.

^{ε1} NOTE—Keywords were added editorially in November 1996.

1. Scope

1.1 This specification provides design and construction criteria for double and single fire and foam station cabinets. See Fig. 1 and Fig. 2. Valves, hose, and fittings are not included.

1.2 Optional back and legs may be provided.

1.3 The values stated in inch-pound units are to be regarded as the standard. The values in parentheses are for information only.

2. Referenced Documents

2.1 ASTM Standards:

- A 36/A 36M Specification for Structural Steel²
 - A 53 Specification for Pipe, Steel, Black and Hot Dipped, Zinc Coated Welded and Seamless³
 - A 167 Specification for Stainless and Heat-Resisting Chromium Nickel Steel Plate, Sheet and Strip⁴
 - A 312/A 312M Specification for Seamless and Welded Austenitic Stainless Steel Pipe³
 - A 569/A 569M Specification for Steel, Carbon (0.15 Maximum, Percent), Hot-Rolled Sheet and Strip, Commercial Quality⁴
 - B 209 Specification for Aluminum and Aluminum-Alloy Sheet and Plate⁵
 - B 221 Specification for Aluminum and Aluminum-Alloy Extruded Bars, Rods, Wire, Shapes and Tubes⁵
 - F 593 Specification for Stainless Steel Bolts, Hex Cap Screws and Studs⁶
 - F 594 Specification for Stainless Steel Nuts⁶
 - F 783 Specification for Staple, Handgrab, Handle, and Stirrup Rung⁷
- 2.2 American National Standards:⁸
- ANSI B18.21.1 Lock Washer

¹ This specification is under the jurisdiction of ASTM Committee F-25 on Ships and Marine Technology and is the direct responsibility of Subcommittee F25.13 on Piping Systems.

Current edition approved March 15, 1991. Published November 1991.

² Annual Book of ASTM Standards, Vol 01.04.

³ Annual Book of ASTM Standards, Vol 01.01.

⁴ Annual Book of ASTM Standards, Vol 01.03.

⁵ Annual Book of ASTM Standards, Vol 02.02.

⁶ Annual Book of ASTM Standards, Vol 15.08.

⁷ Annual Book of ASTM Standards, Vol 01.07.

⁸ Available from American National Standards Institute, 11 W. 42nd St., 13th Floor, New York, NY 10036.

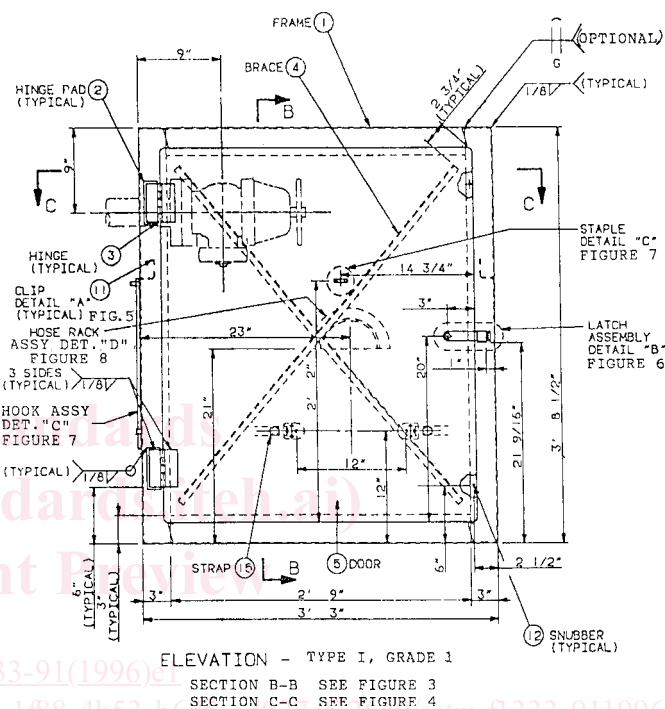


FIG. 1 Fire and Foam Cabinet—Type I

ANSI B18.22.1 Plain Washer

2.3 Other Standards:

- American Bureau of Shipping Rules for Building and Classing of Steel Vessels⁹
- American Welding Society Publication, AWS D 1.1 Structural Welding Code¹⁰

3. Classification

3.1 Type I, Single Cabinet (see Fig. 1 and Figs. 3-9):

3.1.1 Grade 1—Right-hand door active leaf.

3.1.1.1 Class A, Mild Steel—Specification A 36/A 36M.

3.1.1.2 Class B, Stainless Steel—Specification A 167.

⁹ Available from American Bureau of Shipping, 45 Eisenhower Dr., PO Box 910, Paramus, NJ 07653.

¹⁰ Available from American Welding Society, PO Box 351040, 550 N.W. LeJeune Rd., Miami, FL 33135.

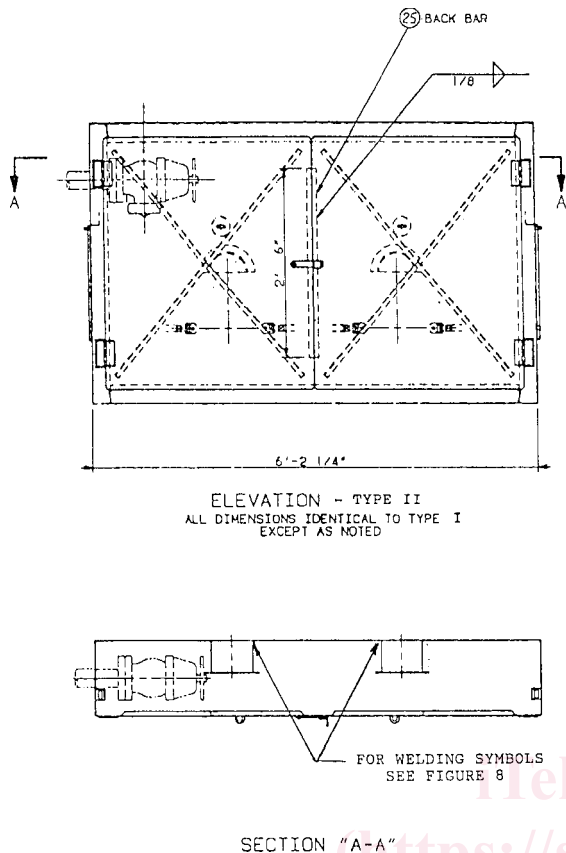


FIG. 2 Fire and Foam Cabinet—Type II

TABLE 1 Parts List

Item Number ^A	Description ^B
1	Frame plate, 12 gage
2	Hinge pad flatbar, 1½ in. by 4½ in. by 12 gage
3	Hinge undrilled butt, 4 in. long by 2 in. wide, commercial stainless steel
4	Brace angle, ¾ by ¾ by ⅛ in.
5	Door plate, 12 gage
6	Staple round bar, ⅜-in. dimensions in accordance with Specification F 783
7	Hook round bar, ¼ in.
8	Latch flat bar, ⅜ by 1 in.
9	Keeper flat bar, ⅜ by 1 in.
10	Rivet button monel or aluminum, ¼ in.
11	Clip wrench/nozzle, plate 12 gage
12	Snubber rubber, commercial
13	Retainer plate, 12 gage
14	Saddle pipe 6 NPS Schedule 40, Specification A 53
15	Strap hose securing, quick disconnect, commercial
16	Clip hook securing, commercial, Specification A 167
17	Washer TFE-fluorocarbon
Options	
18	Back plate, ⅜ in.
19	Leg angle, 4 by 3 by ⅜ in., Specification A 36/A 36M
20	Brace angle, 4 by 3 by ⅜ in., Specification A 36/A 36M
21	Bolt hex head, ⅜—16 UNC—2A by 1¼-in. long, stainless steel Type 316, Specification F 593
22	Washer flat, stainless steel Type 316 for ⅜-in. diameter bolt, ANSI B18.22.1, Type B
23	Nut heavy hex ⅜—16 UNC—2B, stainless steel Type 316, Specification F 594
24	Washer lock, stainless steel Type 316 for ⅜-in. diameter bolt, ANSI B18.21.1, Regular
25	Back bar flat bar, 1½ in. by 30 in. by 12 gage

^AItems 18 to 24 (inclusive) are optional.
^B1 in. = 25.4 mm.

- 3.1.1.3 Class C, Aluminum—Specification B 209.
- 3.1.2 Grade 2—Left-hand door.
 - 3.1.2.1 Class A, Mild Steel—Specification A 36/A 36M.
 - 3.1.2.2 Class B, Stainless Steel—Specification A 167.
 - 3.1.2.3 Class C, Aluminum—Specification B 209.
- 3.2 Type II, Double Cabinet (see Fig. 2 and Fig. 8):
 - 3.2.1 Grade 1—Right-hand doors active leaf.
 - 3.2.1.1 Class A, Mild Steel—Specification A 36/A 36M.
 - 3.2.1.2 Class B, Stainless Steel—Specification A 167.
 - 3.2.1.3 Class C, Aluminum—Specification B 209.

4. Ordering Information

- 4.1 Fire and foam cabinets ordered in accordance with this specification shall include the following:
 - 4.1.1 ASTM title, designation, and year of issue,
 - 4.1.2 Quantity (number of cabinets),
 - 4.1.3 Type, grade, and class, and
 - 4.1.4 Optional features.

5. Materials and Manufacture

- 5.1 Materials:
 - 5.1.1 See Table 1.
 - 5.1.2 Class materials.
 - 5.1.2.1 All materials for Class A cabinets shall meet the requirements of Specifications A 53 and A 36/A 36M or Specification A 569/A 569M, except as specified in Table 1.
 - 5.1.2.2 All materials for Class B cabinets shall meet the requirements of Specifications A 167 and A 312/A 312M, except as specified in Table 1.

- 5.1.2.3 All materials for Class C cabinets shall meet the requirements of Specifications B 209 and B 221 except as specified in Table 1.

5.2 Manufacture:

- 5.2.1 Welding shall be in accordance with the American Bureau of Shipping Rules for Building and Classing of Vessels or American Welding Society Structural Welding Code AWS D1.1.

- 5.2.2 Punchout shall have a 3-in. (approximately 76-mm) diameter hole with three evenly spaced ⅛-in. (approximately 1.5-mm) tabs for both sides of cabinet (see Fig. 3).

6. Workmanship, Finish, and Appearance

- 6.1 Fire and foam cabinets shall be free of weld spatter, burrs, and sharp corners, rough edges, and other defects which might be hazardous to personnel and equipment.

6.2 Surface Requirements:

- 6.2.1 Class A Cabinets—Coat with 1.0-mil dry film thickness, inorganic zinc silicate, including options.
- 6.2.2 Class B Cabinets—Uncoated. Optional legs coated with 1.0-mil dry film thickness, inorganic zinc silicate.
- 6.2.3 Class C Cabinets—Uncoated.

7. Packaging and Package Marking

- 7.1 Loose fasteners and hardware shall be packaged and securely attached inside each cabinet.
- 7.2 Shipping—Each cabinet shall bear a weathertight tag showing the purchase order number, ASTM standard designation, type, and name of manufacturer.