

---

# International Standard



# 3926

---

INTERNATIONAL ORGANIZATION FOR STANDARDIZATION • МЕЖДУНАРОДНАЯ ОРГАНИЗАЦИЯ ПО СТАНДАРТИЗАЦИИ • ORGANISATION INTERNATIONALE DE NORMALISATION

---

## Shipbuilding — Inland navigation — Couplings for oil and fuel reception — Mating dimensions

*Construction navale — Navigation intérieure — Raccords de réception d'huile et de combustible — Dimensions de raccordement*

Second edition — 1980-08-01

ITh STANDARD PREVIEW  
(standards.iteh.ai)

[ISO 3926:1980](#)

<https://standards.iteh.ai/catalog/standards/sist/a9bdb592-4925-4e15-9374-13b580094fbd/iso-3926-1980>

---

UDC 629.12.012 : 629.122

Ref. No. ISO 3926-1980 (E)

Descriptors : shipbuilding, inland navigation, filling devices, dimensions, classifications.

## Foreword

ISO (the International Organization for Standardization) is a worldwide federation of national standards institutes (ISO member bodies). The work of developing International Standards is carried out through ISO technical committees. Every member body interested in a subject for which a technical committee has been set up has the right to be represented on that committee. International organizations, governmental and non-governmental, in liaison with ISO, also take part in the work.

Draft International Standards adopted by the technical committees are circulated to the member bodies for approval before their acceptance as International Standards by the ISO Council.

International Standard ISO 3926 was developed by Technical Committee ISO/TC 8, *Shipbuilding*.

This second edition was submitted directly to the ISO Council, in accordance with clause 5.10.1 of part 1 of the Directives for the technical work of ISO. It cancels and replaces the first edition (i.e. ISO 3926:1976), which had been approved by the member bodies of the following countries :

Austria	Ireland	Romania
Belgium	Israel	South Africa, Rep. of
Brazil	Italy	Turkey
Bulgaria	Japan	United Kingdom
Czechoslovakia	Netherlands	USSR
France	Poland	Yugoslavia

The member body of the following country had expressed disapproval of the document on technical grounds :

Germany, F.R.

# Shipbuilding — Inland navigation — Couplings for oil and fuel reception — Mating dimensions

## iTeh STANDARD PREVIEW (standards.iteh.ai)

### 0 Introduction

This International Standard was drawn up with the aim of unifying the mating dimensions of filling devices on board ships for lubricating oil and liquids fuels.

Observance of the specified dimensions in the corresponding couplings in ships and in port bases will facilitate the process of filling ships with fuel and oil and reduce the labour and time expended for this purpose.

### 1 Scope and field of application

This International Standard lays down the mating dimensions of couplings for fuel and oil reception on vessels. These devices are applicable to inland vessels and to port installations used by these vessels.

This International Standard does not apply to the corresponding devices of cargo systems of vessels intended for the transportation of petroleum products.

### 2 Classification

This International Standard specifies three sizes of couplings with the following nominal sizes of pipes for vessels of various tonnage and types :

- DN 50
- DN 80
- DN 150 (for fuel only)

### 3 Mating dimensions

The principal mating parts and their dimensions are shown in figures 1 and 2 and given in the table.

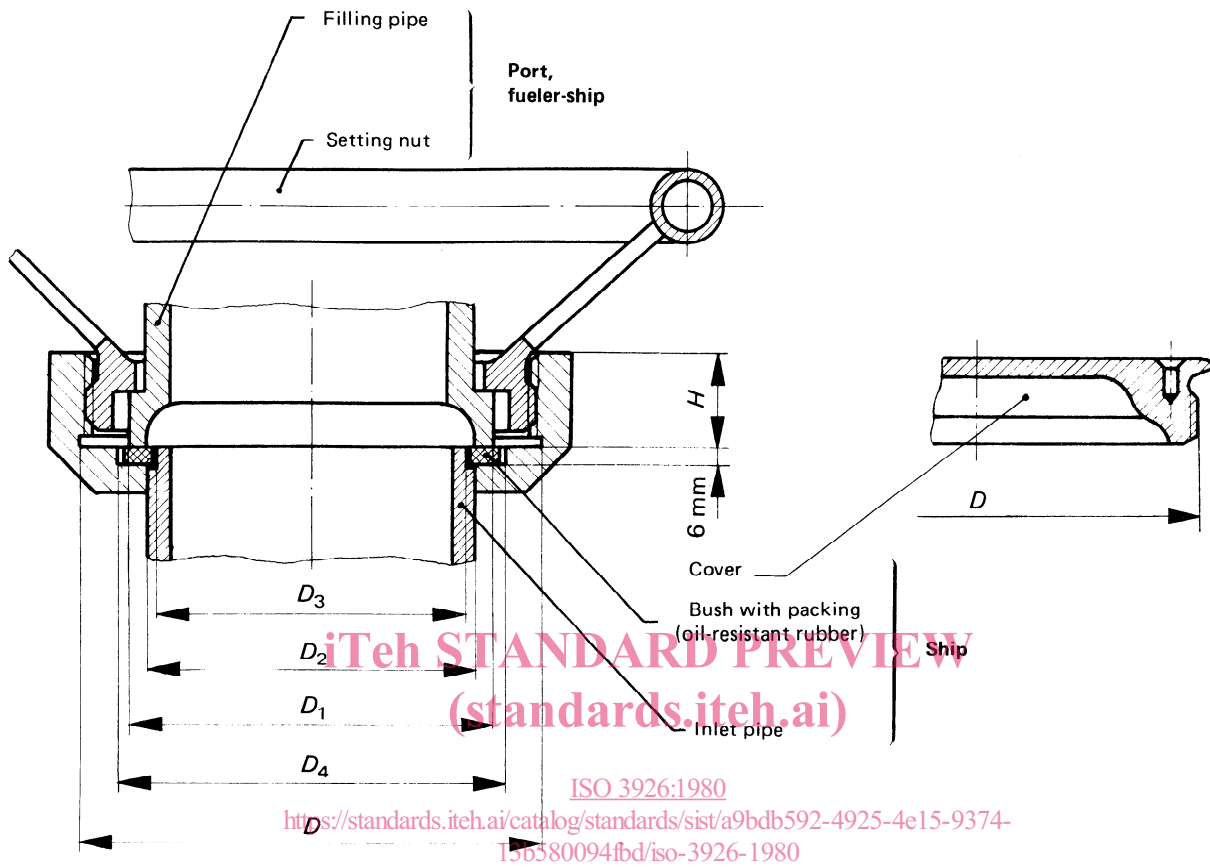


Figure 1 – Coupling for fuel and oil reception for nominal sizes 50 and 80

Table – Mating dimensions

Dimensions in millimetres

Nominal size DN	Trapezoidal thread $D$	Diameters				Height $H$
		$D_1$	$D_2$	$D_3$	$D_4$	
50	85 × 4	67	59	54	69	25
80	120 × 6	100	90	85	102	30

NOTE – The elements without dimensions are approximated and do not determine the construction.

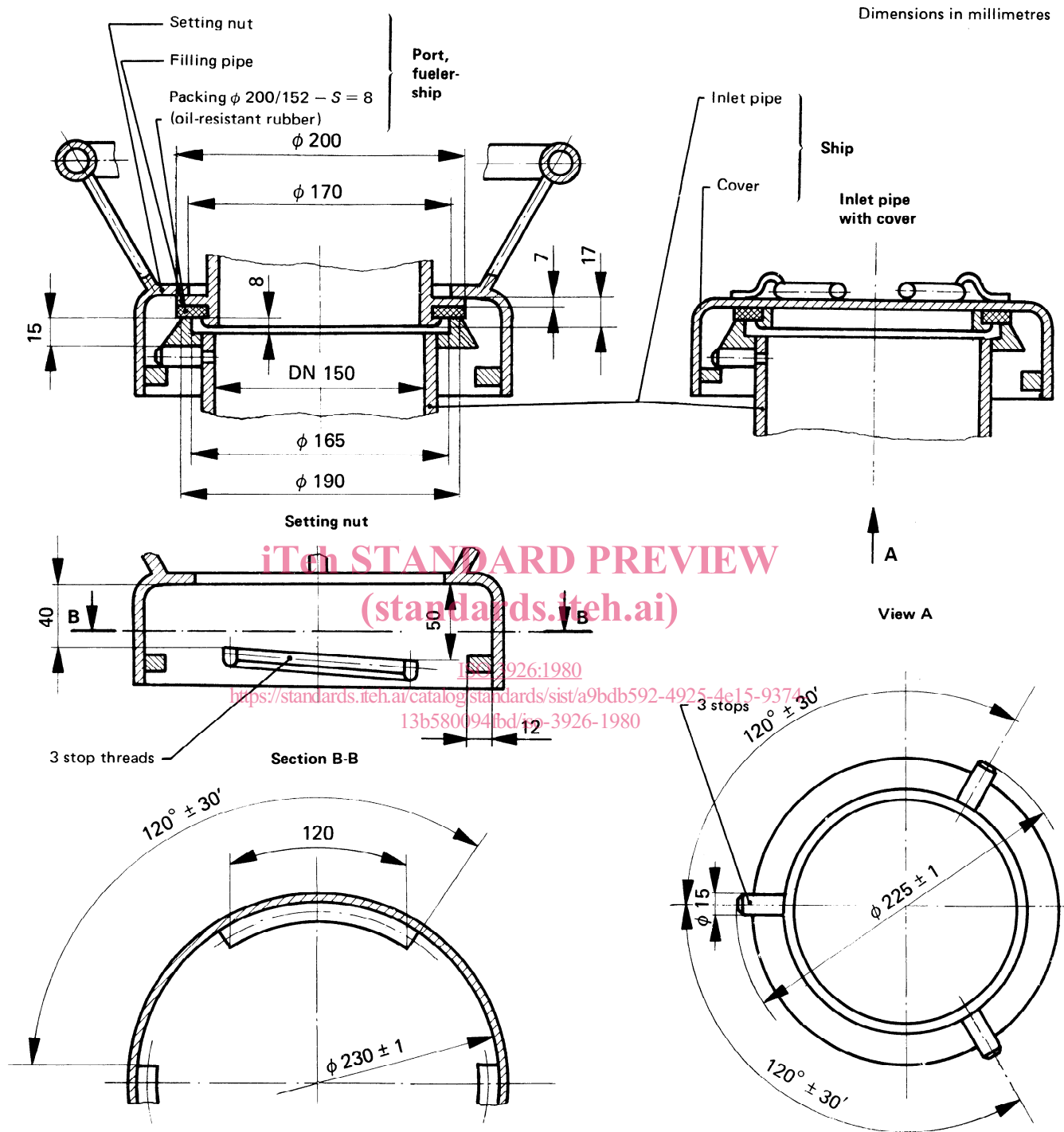


Figure 2 — Coupling for fuel reception with nominal size 150

NOTE — The elements without dimensions are approximated and do not determine the construction.

**iTeh STANDARD PREVIEW**  
**(standards.iteh.ai)**

This page intentionally left blank

ISO 3926:1980

<https://standards.iteh.ai/catalog/standards/sist/a9bdb592-4925-4e15-9374-13b580094fbd/iso-3926-1980>

**iTeh STANDARD PREVIEW**  
**(standards.iteh.ai)**

This page intentionally left blank

[ISO 3926:1980](#)

<https://standards.iteh.ai/catalog/standards/sist/a9bdb592-4925-4e15-9374-13b580094fbd/iso-3926-1980>

**iTeh STANDARD PREVIEW**  
**(standards.iteh.ai)**

This page intentionally left blank

ISO 3926:1980

<https://standards.iteh.ai/catalog/standards/sist/a9bdb592-4925-4e15-9374-13b580094fbd/iso-3926-1980>