



Designation: **D7753–12 D7753 – 12 (Reapproved 2016)**

Standard Test Method for Hydrocarbon Types and Benzene in Light Petroleum Distillates by Gas Chromatography¹

This standard is issued under the fixed designation D7753; the number immediately following the designation indicates the year of original adoption or, in the case of revision, the year of last revision. A number in parentheses indicates the year of last reapproval. A superscript epsilon (ϵ) indicates an editorial change since the last revision or reapproval.

1. Scope

1.1 This test method covers and provides for the quantitative determination of total saturates, total olefins, total aromatics and benzene in light petroleum distillates having a final boiling point below 215°C by multidimensional gas chromatography. Each hydrocarbon grouping as well as benzene can be reported in both volume and mass percent.

1.2 This test method is applicable to light petroleum distillates such as oxygenate-free motor gasoline or spark ignition fuels, naphthas and hydrocarbon solvents over the content ranges from 1% (V/V) to 70% (V/V) total olefins, 1% (V/V) to 80% (V/V) total aromatics and 0.2% to 10% (V/V) benzene. This test method may apply to concentrations outside these ranges, but the precision has not been determined. Interlaboratory testing for precision used full range blending streams, such as FCC, reformates and spark ignition fuel or blended motor gasolines.

1.3 This test method is not intended to determine oxygenated components. Light petroleum distillate products such as motor gasoline may contain oxygenates. Oxygenates such as methyl *tert*-butyl ether (MTBE), *tert*-amyl methyl ether (TAME), ethyl *tert*-butyl ether (ETBE), ethanol and methanol etc. will coelute with specific hydrocarbon groups. If there is any suspicion the sample contains oxygenates, the absence of oxygenates should be confirmed by other standard test methods such as Test Methods **D4815**, **D5599**, or **D6839** before using this test method.

1.4 This test method is not applicable for the determination of individual hydrocarbon components with the exception of benzene. Test Method **D6733** may be used to determine a large number of individual hydrocarbons to complement this test method.

1.5 The values stated in SI units are to be regarded as standard. No other units of measurement are included in this standard.

1.6 *This standard does not purport to address all of the safety concerns, if any, associated with its use. It is the responsibility of the user of this standard to establish appropriate safety and health practices and determine the applicability of regulatory limitations prior to use.*

2. Referenced Documents

2.1 *ASTM Standards:*²

D4815 Test Method for Determination of MTBE, ETBE, TAME, DIPE, tertiary-Amyl Alcohol and C₁ to C₄ Alcohols in Gasoline by Gas Chromatography

D5599 Test Method for Determination of Oxygenates in Gasoline by Gas Chromatography and Oxygen Selective Flame Ionization Detection

D6733 Test Method for Determination of Individual Components in Spark Ignition Engine Fuels by 50-Metre Capillary High Resolution Gas Chromatography

D6839 Test Method for Hydrocarbon Types, Oxygenated Compounds, and Benzene in Spark Ignition Engine Fuels by Gas Chromatography

3. Terminology

3.1 *Definitions of Terms Specific to This Standard:*

¹ This test method is under the jurisdiction of ASTM Committee **D02** on Petroleum Products, Liquid Fuels, and Lubricants and is the direct responsibility of Subcommittee **D02.04.0L** on Gas Chromatography Methods.

Current edition approved Jan. 15, 2012/Oct. 1, 2016, Published July 2012/November 2016. DOI:10.1520/D7753-12. Originally approved in 2012. Last previous edition approved in 2012 as D7753 – 12. DOI:10.1520/D7753-12R16.

² For referenced ASTM standards, visit the ASTM website, www.astm.org, or contact ASTM Customer Service at service@astm.org. For *Annual Book of ASTM Standards* volume information, refer to the standard's Document Summary page on the ASTM website.

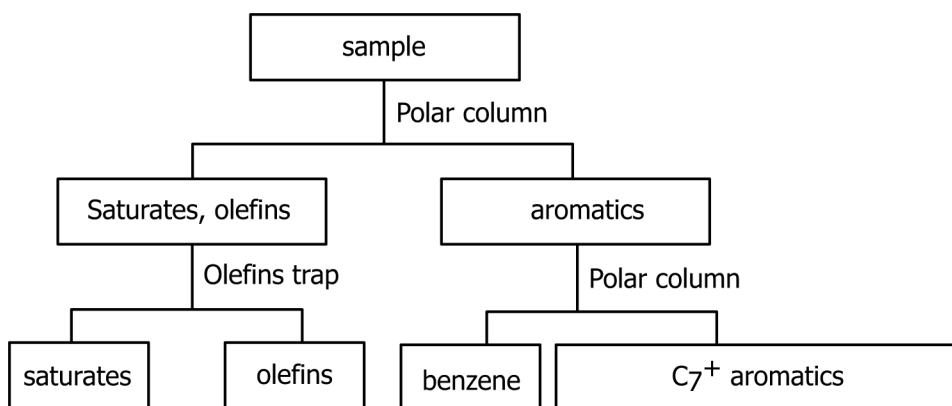


FIG. 1 Separation Scheme of Hydrocarbon Types and Benzene Analysis

3.1.1 *aromatics, n*—mass or volume % of monocyclic aromatics and polycyclic aromatics (for example, naphthalenes), aromatic olefins and C₈⁺ cyclodienes compounds.

3.1.2 *C₇⁺ aromatics, n*—mass or volume % of all other aromatics compounds (see 3.1.1) in sample not including benzene.

3.1.3 *olefins, n*—mass or volume % of alkenes, plus cycloalkenes and some di-olefins.

3.1.4 *olefins trap, n*—specific column utilized to selectively retain olefins from mixture of olefins and saturates. The trap must have good reversibility to capture and release olefins by changing the temperature.

3.2 *Acronyms:*

3.2.1 *BCEF- N,N-bis(α-cyanoethyl) formamide*—gas chromatography stationary phase.

4. Summary of Test Method

4.1 Fig. 1 shows a separation scheme of the various hydrocarbon types and benzene analysis. The instrumental configuration is shown in Fig. 2. The valves are actuated at predetermined times to direct different components to different columns. As the analysis proceeds, different hydrocarbon types and benzene elute and are detected by a flame ionization detector (FID).

4.2 The mass concentration of different hydrocarbon types and benzene are determined by the application of average relative response factors to the areas of the detected peaks followed by normalization to 100%. 100%.

4.3 The volume percent concentration of different hydrocarbon types and benzene can be determined by the application of average density factors to the calculated mass concentration of the detected peaks followed by normalization to 100%. 100%.

4.4 This test method is not intended to determine compounds that contain oxygenates, such as ethanol, etc. Such oxygenates interfere with the analysis of the hydrocarbons.

4.5 Analysis time of a sample is approximately 15 min. 15 min.

5. Significance and Use

5.1 Knowledge of the olefinic, aromatic, and benzene content is very important in quality specifications of petroleum products, such as spark ignition fuels (gasoline) and hydrocarbon solvents. Fast and accurate determination of hydrocarbon types and benzene of petroleum distillates and products is also important in optimization of process units.

5.2 This test method provides a fast standard procedure for determination of hydrocarbon types and benzene in light oxygenate-free petroleum distillates and products.

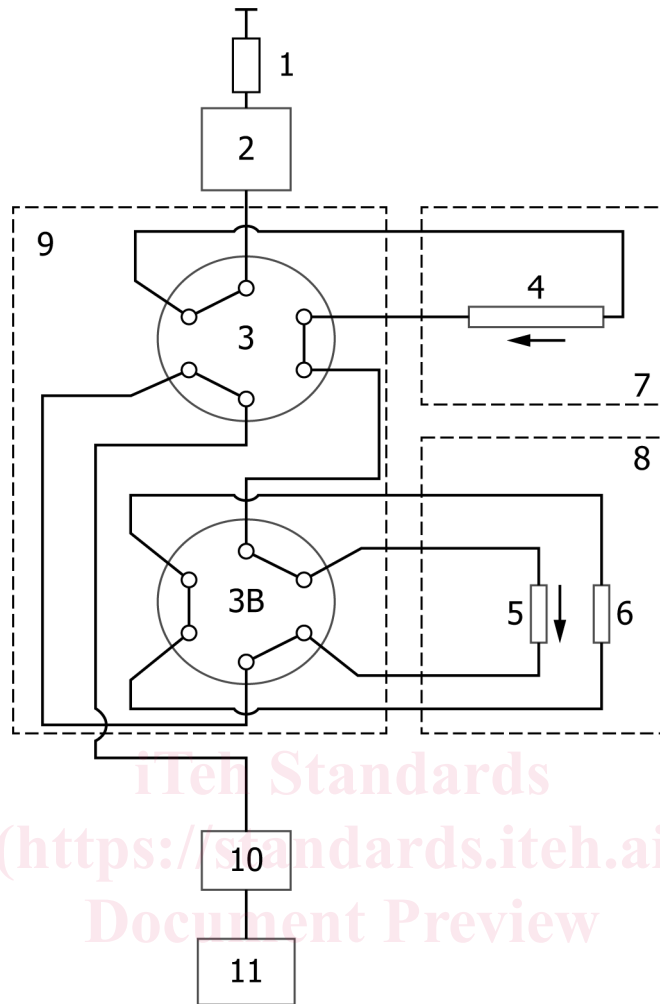
6. Interferences

6.1 C₁₂⁺ aliphatic hydrocarbon compounds (not including C₁₂) may not be fully separated from benzene in the polar column, thus the determination of aromatics and benzene may be affected.

6.2 Different types of oxygenated compounds in some petroleum products will elute with specific hydrocarbon groups and interfere with the analysis of the hydrocarbons.

6.3 Commercial detergent, antioxidant, antiknock additives and dyes utilized in some petroleum products have been found not to interfere with this test method.

6.4 Dissolved water in samples has been found not to interfere with this test method.



NOTE 1—Legend:

- 1—injector
- 2—vaporization room
- 3, 3B—valve 1
- 4—polar column
- 5—olefins trap
- 6—balance column
- 7—polar column oven 1
- 8—olefins trap oven
- 9—valves oven
- 10—FID
- 11—data processing unit

FIG. 2 Configuration of Analytical System

7. Apparatus

7.1 The analysis system is comprised of a gas chromatograph with manual or automated sample injection, and specific hardware modifications. These modifications include columns, olefins trap, valves, and temperature controllers.

7.2 *Gas Chromatograph*—capable of temperature programmed operation at specified temperature, equipped with a vaporization inlet that can be a packed column inlet, a flame ionization detector (FID), and necessary flow controllers.

7.3 *Sample Introduction System*—manual or automatic injector, capable of injecting a $0.1 \mu\text{L}$ to $0.1 \mu\text{L}$ volume of sample. Automated injector is recommended.

7.4 *Gas Flow or Pressure Controllers*—with adequate precision to provide reproducible flow rate of carrier gas to the chromatographic system, hydrogen and air for the flame ionization detector. Control of air pressure for automated valves operation is required.

7.5 *Data Acquisition System*—chromatographic workstation shall meet the following specifications:

TABLE 1 Temperature Control Ranges of System Components

Component	Typical Operating Temperature, °C	Heating Mode
Polar Column	100~120	isothermal
Olefin Trap	125~210	temperature programmed ~40°C/min
Switching Valves	100~140	isothermal
Sample Lines	100~140	isothermal

7.5.1 Sampling rate of at least 10 points per second.

7.5.2 Capacity for 100 peaks for each analysis.

7.5.3 Normalized areas percent calculation with response factors.

7.5.4 Area summation of peaks that are split or of groups of components that elute at specific retention times.

7.5.5 Noise and spike rejection capability.

7.5.6 Manual baseline adjusting function, as required.

7.6 Valves—column and trap switching, automated rotary valves are recommended.

7.7 Gas Purifiers—to remove moisture and oxygen from carrier gas.

7.8 Temperature Controllers—the independent temperature control of the polar column, olefins trap, switching valves and sample connecting lines is required. All of the system components that contact the sample should be heated to a temperature that will prevent condensation of any sample component. Table 1 lists the system components and approximate operating temperatures. Some of the components operate isothermally, while others require temperature programming. Temperature control may be by any means that will meet the requirements listed in Table 1.

8. Reagents and Materials

8.1 Gases:

8.1.1 Carrier Gas—Nitrogen or Helium. ILS precision of this test method was obtained using nitrogen as the carrier gas. Better than 99.999% 99.999 % pure. (**Warning**—Compressed gases under high pressure.) Gas purifiers may be used to attain the required purity or to ensure a stable signal baseline.

8.1.2 Hydrogen—Better than 99.999% 99.999 % pure. (**Warning**—Extremely flammable gas under high pressure.) Gas purifiers may be used to attain the required purity or to ensure a stable signal baseline.

8.1.3 Air, Compressed— $<10 \leq 10 \text{ mg/m}^3 \text{ kg/kg}$ each of total hydrocarbons and H₂O. (**Warning**—Compressed gas under high pressure that supports combustion.) Gas purifiers may be used to attain the required purity or to ensure a stable signal baseline.

8.2 Columns and Traps—This test method requires the use of a polar column and a reversible olefin trap. The following contains guidelines that are to be used to judge column and trap suitability. The guidelines describe temperatures as used in the current system. Alternatives can be used provided that the separation requirement as described is obtained.

8.2.1 Polar Column—At an optimal operating temperature, the column should meet the baseline separation between benzene and aliphatic components up to undecene; between toluene and benzene. The system validation test sample can be used to check the polar column separation performance. The retention time ratio of undecene and benzene ($t_{benzene}/t_{undecene}$) shall be larger than 1.5, the resolution shall be >2.0. The retention time ratio of benzene and toluene ($t_{toluene}/t_{benzene}$) shall be larger than 1.25, the resolution shall be >1.1 (see Note 1). A BCEF column which is 25% 25 % BCEF coated on acid washing diatomite supporter is recommended as the polar column. The length of the polar column is approximately 5 m and the inside diameter is approximately 2 mm-2 mm. Other columns which meet the separation requirements can be used. Fig. 3 is a polar column separation performance check chromatogram with system validation test sample.

$$t_{benzene}/t_{undecene} = 1.59$$

$$R_{benzene}/t_{undecene} = 2.4$$

$$t_{toluene}/t_{benzene} = 1.31$$

$$R_{toluene}/t_{benzene} = 1.25$$

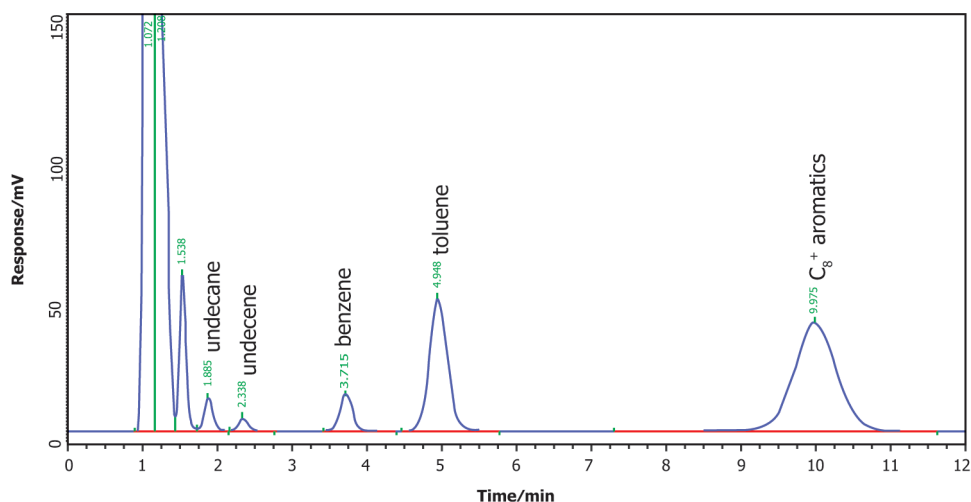


FIG. 3 Polar Column Separation Performance Check Chromatogram

NOTE 1—

$$R_s = \frac{2(t_{R2} - t_{R1})}{W_{b2} + W_{b1}} \approx \frac{(t_{R2} - t_{R1})}{W_{b1}}$$

where: $t_{R2} > t_{R1}$

8.2.2 *Olefin Trap*—The olefin trap shall have excellent reversibility performance. At a lower temperature, for example, 130°C ; 130°C , the trap shall retain the olefins in the sample and pass all saturates before benzene elutes from the polar column. At a higher temperature, for example, 240°C ; 210°C , the trap shall quantitatively release the retained olefins. The adsorbent of olefins usually is a silver ion based material. Any olefin trap which satisfies the performance requirements can be used. The performance of the trap can be verified first with the system validation test sample (10.2) and, once established, can be monitored either with the validation test sample or actual production or consensus reference quality sample.

8.3 *System Gravimetric Validation Test Sample*—Quantitative mixtures of pure hydrocarbons are used to verify the operating temperature, valve switching times and validation of the system analysis accuracy. The validation sample composition and approximate component concentrations are shown in Table 2.

8.4 *Quality Control Samples*—Production or consensus samples, or both, used to routinely monitor validation of analysis system. Any production or interlaboratory or certified reference sample which approximates similar compositions to the samples to be analyzed may be designated as the quality control sample. Quality control samples shall be selected such that they fall within the range and composition of samples to be analyzed. The quality control samples shall be stable for a specified period of use and storage conditions. It is preferred that the quality control samples be ampouled to safeguard their composition integrity.

9. Preparation of Apparatus

9.1 The configuration of the analyzer system is shown in Fig. 1. Some system modules may have independent temperature controlled components. If using a commercial analyzer, consult the manufacturer’s instructions or guidelines for preparation of the instrument.

9.2 All supply gas pressure shall be adequate to ensure proper mass flow control and air or nitrogen actuated valve operation. The approximate supplying gas pressure values are listed in Table 3.

9.3 Impurities in the carrier gas will have a detrimental effect on the performance of column and olefin trap. Therefore, appropriate gas purifiers shall be installed to ensure good quality gases.

9.4 The system validation test sample or quality control sample can be used to determine the valve switching times. The olefins trap temperature is determined in order to meet the retention requirement for olefins. The approximate instrument operating conditions are listed in Table 4.

10. System Checks and Standardization

10.1 *Instrument System Reliability Checking*—The checking of the analytical system is very important to ensure test results reliability. The following gives a guideline:

10.1.1 Use the system gravimetric validation test sample in 8.3 to establish the quantitative performance of the system. The standard is used during setting up the instrument and periodically afterwards to verify its performance. The required absolute

TABLE 2 System Validation Test Sample

Type	Component	Approximate Concentration, Mass %
Saturates	Pentane	5.0
	Hexane	4.5
	Cyclohexane	4.0
	Heptane	4.5
	Methylcyclohexane	4.0
	Octane	4.0
	2,2,4-Trimethylpentane	6.0
	Dimethylcyclohexane	3.0
	Nonane	3.0
	Decane	2.5
	Undecane	1.5
Olefins	Pentene	5.0
	Hexene	6.0
	Heptene	5.0
	Octene	3.5
	Nonene	2.5
	Decene	2.0
	Undecene	1.0
Aromatics	Benzene	1.0
	Toluene	5.0
	Dimethylbenzene	8.0
	Ethylbenzene	5.0
	Propylbenzene	4.0
	Trimethylbenzene	6.0
	Tetramethylbenzene	4.0
Type Totals		100
Saturates		42.0
Olefins		25.0
Benzene		1
Aromatics (including benzene)		33.0

TABLE 3 Supply Gas Pressure

Gas	Pressure, MPa
Carrier gas	0.35
Hydrogen	0.3
Air (FID)	0.35
Air (Valve)	0.35

ASTM D7753-12(2016)

TABLE 4 Chromatographic Operating Conditions

Condition	Parameter
Vaporization temperature, °C	200
Polar column temperature, °C	110
Olefins trapped temperature, °C	...
Olefins desorption temperature, °C	200-220
Column Switching valves	100-140
Sample lines	100-140
Carrier gas flow rate, mL/min (Nitrogen or helium)	25-30
Detector gas flow rate, mL/min	
Air	350-450
Hydrogen	30-35
Sample charged, µL	0.1
Valve actuated pressure, kPa	250-300

deviation between obtained results and blending concentration values as specified in **Table 2** is $\pm 1.6\%$ for total saturates, $\pm 1.2\%$ for total olefins, $\pm 1.4\%$ for total aromatics, and $\pm 0.05\%$ for benzene.

10.1.2 *Quality Control (QC) Sample*—Preferably from similar production, or from an interlaboratory study or equivalent, or a combination thereof. Such quality control samples is used to routinely monitor the operation of the chromatographic system and verify that reported concentrations are within the precision of the test method. The quality sample shall be analyzed for each batch of samples. Depending on the range and composition of the samples to be analyzed, more than one quality control sample may be necessary. The QC sample shall be of sufficient volume to provide an ample supply for the intended period of use and it shall be homogeneous and stable under the anticipated storage conditions. The quality control sample should have similar composition and hydrocarbon distribution as the sample with highest olefin concentration routinely analyzed to safeguard against potential olefin breakthrough from the olefin trap. The sample is analyzed using procedure described in 11.3 and monitored by SQC.