

ETSI TS 124 571 V18.8.0 (2026-03)



TECHNICAL SPECIFICATION

**5G;
5G System (5GS);
Control plane Location Services (LCS) procedures;
Stage 3
(3GPP TS 24.571 version 18.8.0 Release 18)**



Reference

RTS/TSGC-0124571 vi80

Keywords

5G

ETSI

650 Route des Lucioles
F-06921 Sophia Antipolis Cedex - FRANCE

Tel.: +33 4 92 94 42 00 Fax: +33 4 93 65 47 16

Siret N° 348 623 562 00017 - APE 7112B
Association à but non lucratif enregistrée à la
Sous-Préfecture de Grasse (06) N° w061004871

Important notice

The present document can be downloaded from the
[ETSI Search & Browse Standards](#) application.

The present document may be made available in electronic versions and/or in print. The content of any electronic and/or print versions of the present document shall not be modified without the prior written authorization of ETSI. In case of any existing or perceived difference in contents between such versions and/or in print, the prevailing version of an ETSI deliverable is the one made publicly available in PDF format on [ETSI deliver](#) repository.

Users should be aware that the present document may be revised or have its status changed, this information is available in the [Milestones listing](#).

If you find errors in the present document, please send your comments to the relevant service listed under [Committee Support Staff](#).

If you find a security vulnerability in the present document, please report it through our [Coordinated Vulnerability Disclosure \(CVD\)](#) program.

Notice of disclaimer & limitation of liability

The information provided in the present deliverable is directed solely to professionals who have the appropriate degree of experience to understand and interpret its content in accordance with generally accepted engineering or other professional standard and applicable regulations.

No recommendation as to products and services or vendors is made or should be implied.

No representation or warranty is made that this deliverable is technically accurate or sufficient or conforms to any law and/or governmental rule and/or regulation and further, no representation or warranty is made of merchantability or fitness for any particular purpose or against infringement of intellectual property rights.

In no event shall ETSI be held liable for loss of profits or any other incidental or consequential damages.

Any software contained in this deliverable is provided "AS IS" with no warranties, express or implied, including but not limited to, the warranties of merchantability, fitness for a particular purpose and non-infringement of intellectual property rights and ETSI shall not be held liable in any event for any damages whatsoever (including, without limitation, damages for loss of profits, business interruption, loss of information, or any other pecuniary loss) arising out of or related to the use of or inability to use the software.

Copyright Notification

No part may be reproduced or utilized in any form or by any means, electronic or mechanical, including photocopying and microfilm except as authorized by written permission of ETSI.

The content of the PDF version shall not be modified without the written authorization of ETSI.

The copyright and the foregoing restriction extend to reproduction in all media.

© ETSI 2026.
All rights reserved.

Intellectual Property Rights

Essential patents

IPRs essential or potentially essential to normative deliverables may have been declared to ETSI. The declarations pertaining to these essential IPRs, if any, are publicly available for **ETSI members and non-members**, and can be found in ETSI SR 000 314: "*Intellectual Property Rights (IPRs); Essential, or potentially Essential, IPRs notified to ETSI in respect of ETSI standards*", which is available from the ETSI Secretariat. Latest updates are available on the [ETSI IPR online database](#).

Pursuant to the ETSI Directives including the ETSI IPR Policy, no investigation regarding the essentiality of IPRs, including IPR searches, has been carried out by ETSI. No guarantee can be given as to the existence of other IPRs not referenced in ETSI SR 000 314 (or the updates on the ETSI Web server) which are, or may be, or may become, essential to the present document.

Trademarks

The present document may include trademarks and/or tradenames which are asserted and/or registered by their owners. ETSI claims no ownership of these except for any which are indicated as being the property of ETSI, and conveys no right to use or reproduce any trademark and/or tradename. Mention of those trademarks in the present document does not constitute an endorsement by ETSI of products, services or organizations associated with those trademarks.

DECT™, **PLUGTESTS™**, **UMTS™** and the ETSI logo are trademarks of ETSI registered for the benefit of its Members. **3GPP™**, **LTE™** and **5G™** logo are trademarks of ETSI registered for the benefit of its Members and of the 3GPP Organizational Partners. **oneM2M™** logo is a trademark of ETSI registered for the benefit of its Members and of the oneM2M Partners. **GSM®** and the GSM logo are trademarks registered and owned by the GSM Association.

Legal Notice

This Technical Specification (TS) has been produced by ETSI 3rd Generation Partnership Project (3GPP).

The present document may refer to technical specifications or reports using their 3GPP identities. These shall be interpreted as being references to the corresponding ETSI deliverables.

The cross reference between 3GPP and ETSI identities can be found at [3GPP to ETSI numbering cross-referencing](#).

Modal verbs terminology

In the present document "**shall**", "**shall not**", "**should**", "**should not**", "**may**", "**need not**", "**will**", "**will not**", "**can**" and "**cannot**" are to be interpreted as described in clause 3.2 of the [ETSI Drafting Rules](#) (Verbal forms for the expression of provisions).

"**must**" and "**must not**" are **NOT** allowed in ETSI deliverables except when used in direct citation.

Contents

Intellectual Property Rights	2
Legal Notice	2
Modal verbs terminology.....	2
Foreword.....	5
1 Scope	7
2 References	7
3 Definitions of terms, symbols and abbreviations	7
3.1 Terms.....	7
3.2 Symbols.....	8
3.3 Abbreviations	8
4 General	8
4.1 Overview	8
4.1.1 NAS aspect	8
4.1.2 LCS aspect	8
4.2 LCS Support capabilities.....	9
4.2.1 UE support of LCS	9
4.2.2 Network support of LCS	10
5 Support of LCS signalling	10
5.1 General	10
5.2 LCS operations	10
5.2.1 Network initiated location services operations	10
5.2.1.1 Supplementary Services Location Notification.....	10
5.2.1.1.1 General	10
5.2.1.1.2 Normal operation.....	11
5.2.1.2 Positioning Information Transport.....	12
5.2.1.3 Supplementary Services Periodic or Triggered Location.....	13
5.2.1.3.1 General	13
5.2.1.3.2 Normal operation.....	15
5.2.1.4 Supplementary Services Cancel Deferred Location.....	16
5.2.1.4.1 General	16
5.2.1.4.2 Normal operation.....	17
5.2.1.5 Network initiated PRU disassociation procedure.....	18
5.2.1.5.1 General	18
5.2.1.5.2 Normal operation.....	19
5.2.1.6 Sidelink Positioning Information Transport.....	20
5.2.1.7 Network initiated RSPP supplementary information transport	21
5.2.1.7.1 General	21
5.2.1.7.2 Normal operation.....	21
5.2.1.8 Sidelink mobile terminating location request.....	22
5.2.1.8.1 General	22
5.2.1.8.2 Normal operation.....	22
5.2.2 Mobile initiated location services operations.....	24
5.2.2.1 Mobile Originated Location Request(MO-LR).....	24
5.2.2.1.1 General	24
5.2.2.1.2 Normal operation.....	25
5.2.2.2 UE initiated Cancel Deferred Location	29
5.2.2.2.1 General	29
5.2.2.2.2 Normal operation.....	30
5.2.2.3 UE initiated Positioning Information Transport.....	31
5.2.2.4 UE initiated Event Reporting Procedure	32
5.2.2.4.1 General	32
5.2.2.4.2 Normal operation.....	33
5.2.2.5 UE Location Privacy Setting Procedure.....	34

5.2.2.5.1	General	34
5.2.2.5.2	Normal operation.....	35
5.2.2.6	UE initiated Event Reporting Procedure for Low Power Event Reporting and Triggered 5GC-MT-LR	36
5.2.2.6.1	General	36
5.2.2.6.2	Normal operation.....	37
5.2.2.7	PRU association procedure	37
5.2.2.7.1	General	37
5.2.2.7.2	Normal operation.....	38
5.2.2.8	UE initiated PRU disassociation procedure	40
5.2.2.8.1	General	40
5.2.2.8.2	Normal operation.....	41
5.2.2.9	Sidelink Mobile Originated Location Request (SL-MO-LR).....	42
5.2.2.9.1	General	42
5.2.2.9.2	Normal operation.....	43
5.2.2.10	UE initiated Sidelink Positioning Information Transport.....	47
5.2.2.11	UE initiated RSPP supplementary information transport.....	48
5.2.2.11.1	General	48
5.2.2.11.2	Normal operation.....	48
5.3	LCS message and coding	49
5.3.1	Messages for Location services operations.....	49
5.3.2	Messages for LTE Positioning Protocol (LPP).....	49
5.3.2.1	Downlink Positioning Information Transport using LPP messages.....	49
5.3.2.2	Uplink Positioning Information Transport using LPP messages.....	50
5.3.3	Messages for SideLink Positioning Protocol (SLPP)	50
5.3.3.1	Downlink Positioning Information Transport using SLPP messages.....	50
5.3.3.2	Uplink Positioning Information Transport using SLPP messages	50
Annex A (informative): Change history		51
History		54

get full document from standards.iteh.ai

Foreword

This Technical Specification has been produced by the 3rd Generation Partnership Project (3GPP).

The contents of the present document are subject to continuing work within the TSG and may change following formal TSG approval. Should the TSG modify the contents of the present document, it will be re-released by the TSG with an identifying change of release date and an increase in version number as follows:

Version x.y.z

where:

- x the first digit:
 - 1 presented to TSG for information;
 - 2 presented to TSG for approval;
 - 3 or greater indicates TSG approved document under change control.
- y the second digit is incremented for all changes of substance, i.e. technical enhancements, corrections, updates, etc.
- z the third digit is incremented when editorial only changes have been incorporated in the document.

In the present document, modal verbs have the following meanings:

shall indicates a mandatory requirement to do something

shall not indicates an interdiction (prohibition) to do something

The constructions "shall" and "shall not" are confined to the context of normative provisions, and do not appear in Technical Reports.

The constructions "must" and "must not" are not used as substitutes for "shall" and "shall not". Their use is avoided insofar as possible, and they are not used in a normative context except in a direct citation from an external, referenced, non-3GPP document, or so as to maintain continuity of style when extending or modifying the provisions of such a referenced document.

should indicates a recommendation to do something

should not indicates a recommendation not to do something

may indicates permission to do something

need not indicates permission not to do something

The construction "may not" is ambiguous and is not used in normative elements. The unambiguous constructions "might not" or "shall not" are used instead, depending upon the meaning intended.

can indicates that something is possible

cannot indicates that something is impossible

The constructions "can" and "cannot" are not substitutes for "may" and "need not".

will indicates that something is certain or expected to happen as a result of action taken by an agency the behaviour of which is outside the scope of the present document

will not indicates that something is certain or expected not to happen as a result of action taken by an agency the behaviour of which is outside the scope of the present document

might indicates a likelihood that something will happen as a result of action taken by some agency the behaviour of which is outside the scope of the present document

might not indicates a likelihood that something will not happen as a result of action taken by some agency the behaviour of which is outside the scope of the present document

In addition:

is (or any other verb in the indicative mood) indicates a statement of fact

is not (or any other negative verb in the indicative mood) indicates a statement of fact

The constructions "is" and "is not" do not indicate requirements.

Sample Document

get full document from standards.iteh.ai

1 Scope

The present document specifies the operations and information coding for the Non-Access Stratum (NAS) layer protocol for supporting the Location Services (LCS) in the NG-RAN.

The present document is applicable to the User Equipment (UE) and to the Access and Mobility Management Function (AMF) or Location Management Function (LMF) in the 5G System (5GS).

The present document is developed in accordance to the general principles stated in 3GPP TS 23.273 [2].

2 References

The following documents contain provisions which, through reference in this text, constitute provisions of the present document.

- References are either specific (identified by date of publication, edition number, version number, etc.) or non-specific.
- For a specific reference, subsequent revisions do not apply.
- For a non-specific reference, the latest version applies. In the case of a reference to a 3GPP document (including a GSM document), a non-specific reference implicitly refers to the latest version of that document *in the same Release as the present document*.

- [1] 3GPP TR 21.905: "Vocabulary for 3GPP Specifications".
 - [2] 3GPP TS 23.273: "5G System (5GS) Location Services (LCS); Stage 2".
 - [3] 3GPP TS 24.501: "Non-Access-Stratum (NAS) protocol for 5G System (5GS); Stage 3".
 - [4] 3GPP TS 37.355: "LTE Positioning Protocol (LPP)".
 - [4a] 3GPP TS 38.355: "Sidelink Positioning Protocol (SLPP); Protocol specification".
 - [5] 3GPP TS 24.080: "Mobile radio interface layer 3 supplementary services specification; Formats and coding".
 - [6] 3GPP TS 29.572: "5G System; Location Management Services; Stage 3".
 - [7] 3GPP TS 38.305: "Stage 2 functional specification of User Equipment (UE) positioning in NG-RAN".
 - [8] 3GPP TS 22.261: "Service requirements for the 5G system; Stage 1".
 - [9] 3GPP TS 24.572: "User Plane Location Services (LCS) Protocols And Procedures; Stage 3".
 - [10] 3GPP TS 23.586: "Architectural Enhancements to support; Ranging based services and Sidelink Positioning".
 - [11] 3GPP TS 38.455: "NG-RAN; NR Positioning Protocol A (NRPPa)".
-

3 Definitions of terms, symbols and abbreviations

3.1 Terms

For the purposes of the present document, the terms given in 3GPP TR 21.905 [1] and the following apply. A term defined in the present document takes precedence over the definition of the same term, if any, in 3GPP TR 21.905 [1].

For the purposes of the present document, the following terms and definitions given in 3GPP TS 22.261 [8] apply:

satellite NG-RAN

PRU ON/OFF state: This state is defined for a UE associated as a PRU with an LMF (i.e. after the successful completion of PRU association procedure). This state indicates whether the PRU functionality of the UE is activated (i.e. ON state) or deactivated (i.e. OFF state) while it is associated with an LMF.

UE operating as PRU: From the UE perspective, a UE which supports PRU functionality and operates as PRU. From the network perspective, the UE allowed to operate as a PRU based on the UE subscription data and the PRU state is ON.

3.2 Symbols

3.3 Abbreviations

For the purposes of the present document, the abbreviations given in 3GPP TR 21.905 [1] and the following apply. An abbreviation defined in the present document takes precedence over the definition of the same abbreviation, if any, in 3GPP TR 21.905 [1].

5GCN	5G Core Network
5GS	5G System
AMF	Access and Mobility Management Function
DL	Downlink
IE	Information Element
GMLC	Gateway Mobile Location Centre
LCS	Location Services
LDR	Location Deferred Request
LMF	Location Management Function
LPP	LTE Positioning Protocol
MO-LR	Mobile Originated Location Request
MT-LR	Mobile Terminated Location Request
NAS	Non-access Stratum
PRU	Positioning Reference Unit
RSPP	Ranging and sidelink positioning protocol
SLPP	SideLink Positioning Protocol
SNPN	Stand-alone Non-Public Network
UE	User Equipment
UL	Uplink

4 General

4.1 Overview

4.1.1 NAS aspect

To enable transfer of Location Services (LCS) signaling messages between the 5G core network (5GCN) and the UE, two Payload container types are defined in the downlink (DL NAS TRANSPORT message) and the uplink (UL NAS TRANSPORT message or CONTROL PLANE SERVICE REQUEST message). The message protocol and procedures are described in 3GPP TS 24.501 [3].

4.1.2 LCS aspect

LCS uses the defined payload container to transfer LCS signalling messages between the UE and the network.

The corresponding LCS signaling messages include:

- a) LTE Positioning Protocol (LPP) messages (see 3GPP TS 37.355 [4]):

- Both downlink and uplink LPP messages are supported.
- Routing information is transported as the Additional information IE in UL/DL NAS TRANSPORT message for LPP messages (see 3GPP TS 24.501 [3]).

a1) SideLink Positioning Protocol (SLPP) messages (see 3GPP TS 38.355 [4a]):

- Both downlink and uplink SLPP messages are supported.
- Routing information is transported as the Additional information IE in UL/DL NAS TRANSPORT message for SLPP messages (see 3GPP TS 24.501 [3]).

b) Location services messages:

- Messages for MO-LR operations (see 3GPP TS 24.080 [5]).
- Messages for LocationNotification operations (see 3GPP TS 24.080 [5]).
- Messages for EventReport operations (see 3GPP TS 24.080 [5]).
- Messages for PeriodicTriggeredInvoke operations (see 3GPP TS 24.080 [5]).
- Messages for CancelDeferredLocation operations (see 3GPP TS 24.080 [5]).
- Messages for MSCancelDeferredLocation operations (see 3GPP TS 24.080 [5]).
- Messages for LocationPrivacySetting operations (see 3GPP TS 24.080 [5]).
- Messages for PRU-Association operations (see 3GPP TS 24.080 [5]).
- Messages for SL-MO-LR operations (see 3GPP TS 24.080 [5]).
- Messages for SL-MT-LR operations (see 3GPP TS 24.080 [5]).
- Routing information associated with the LMF is transported as the Additional information IE in UL/DL NAS TRANSPORT message or CONTROL PLANE SERVICE REQUEST message (see clause 5.2.2.6.1) for Location services messages that are transported between the UE and the LMF (see 3GPP TS 24.501 [3]).

c) RSPP transport messages:

- Messages for ULRSPPTransport operations (see 3GPP TS 24.080 [5]).
- Messages for DLRSPPTransport operations (see 3GPP TS 24.080 [5]).

The Routing information transported as the Additional information IE can be Routing identifier in the current specification, which includes immediate routing identifier and deferred routing identifier. The immediate routing identifier transported as the Additional information IE is the Correlation ID, which is allocated by the AMF and can be used in the UL/DL NAS TRANSPORT message (see clause 5.2 and clause 5.3). The deferred routing identifier transported as the Additional information IE can be used in the UL NAS TRANSPORT and CONTROL PLANE SERVICE REQUEST message for the AMF routing the LCS messages to the particular LMF (see clause 5.2.2).

The messages for PeriodicTriggeredInvoke operations can be used to enable the location events reporting over user plane connection, and the messages for EventReport operations can be used for the cumulative event report, as described in clause 6.16.1 of 3GPP TS 23.273 [2]. The location events reporting over user plane connection is defined in 3GPP TS 24.572 [9]).

4.2 LCS Support capabilities

4.2.1 UE support of LCS

The UE announces to the network its ability to support LCS notification mechanism or LPP messages or both, using the 5GMM capability IE defined in 3GPP TS 24.501 [3].

The UE supporting LCS notification mechanism and LPP messages may support PRU (defined in 3GPP TS 38.305 [7]). The UE's ability to support PRU is stored in the UDM (see 3GPP TS 23.273 [2]) without any indication in 5GMM capability IE defined in 3GPP TS 24.501 [3].

A UE accessing 5G network via satellite NG-RAN shall not operate as a PRU.

4.2.2 Network support of LCS

The network announces to the UE its ability to support LCS in 5GC using the 5GS network feature support IE defined in 3GPP TS 24.501 [3]. The information is taken into account by the UE, in addition to UE's LCS capabilities, for the UE to determine whether to initiate MO-LR procedure in NG-RAN as specified in 3GPP TS 23.273 [3], clause 6.2.

NOTE: An SNPN can provide Location Services except for the cases of interworking with EPC, roaming, and direct access to SNPN via non-3GPP access, which are not supported in an SNPN.

5 Support of LCS signalling

5.1 General

This clause defines the NG-RAN LCS operations (clause 5.2) and the format and coding of the messages (clause 5.3).

The messages defined in this clause can be transported in the UL/DL NAS Transport message defined in 3GPP TS 24.501 [3].

5.2 LCS operations

5.2.1 Network initiated location services operations

5.2.1.1 Supplementary Services Location Notification

5.2.1.1.1 General

The supplementary services Location Notification operation enables the AMF to trigger the end-user notification verification process on the UE using NAS signalling. The supplementary services messages are transported using the DL NAS Transport message and the UL NAS Transport message defined in 3GPP TS 24.501 [3]. UE Location Privacy Indication information may be included in Location Notification Return Result to indicate whether subsequent LCS requests or ranging and sidelink positioning requests will be allowed or disallowed by the UE. Figure 5.2.1.1.1.1 illustrates an example of the NAS signalling transport applicable to a 5GC-MT-LR procedure for immediate or deferred location or to a SL-MT-LR procedure for immediate or deferred location.

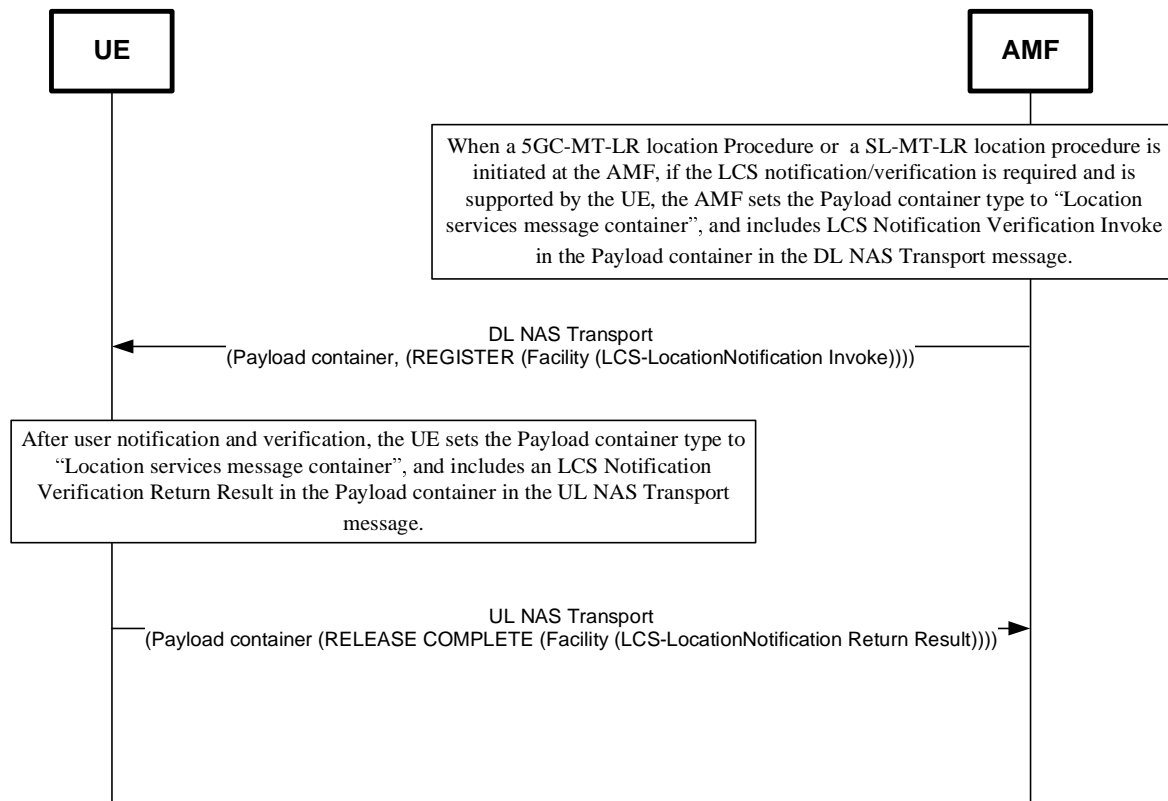


Figure 5.2.1.1.1.1: NAS signalling transport for Supplementary Services Location Notification

NOTE: The optional Additional information IE of the DL/UL NAS Transport message is not included when the LCS Location Notification signalling is transported in the Payload container.

5.2.1.1.2 Normal operation

The network invokes a location notification procedure by sending a REGISTER message containing an LCS-LocationNotification invoke component to the UE as defined in 3GPP TS 24.080 [5]. This may be sent either to request verification for a 5GC-MT-LR or to notify the UE about an already authorized 5GC-MT-LR.

In case of privacy verification for LCS or ranging and sidelink positioning, the UE shall respond to the request by sending a RELEASE COMPLETE message containing the user's response and optionally UE Location Privacy Indication information in a return result component (see figure 5.2.1.1.2.1). If rangingSIEExt is included, the privacy verification is for ranging and sidelink positioning and the corresponding verification result for ranging and sidelink positioning is included in UE Location Privacy Indication information.

During the supplementary services Location Notification operation, the network shall run the timer T(LCSN) defined in 3GPP TS 24.080 [5]. This timer is started when the operation is sent, and stopped when a response is received from the UE. If the timer T(LCSN) expires in the network before any response from the UE (e.g. due to no response from the user), the network shall interpret this by applying the default treatment defined in 3GPP TS 23.273 [2] (i.e. disallow location if barred by subscription or allow location if allowed by subscription). The network may also terminate the dialogue by sending a RELEASE COMPLETE message.

In the case of location notification, the UE shall terminate the dialogue immediately by sending a RELEASE COMPLETE message containing a LocationNotification return result.

If the UE is unable to process the request received from the network, it shall return an error indication by sending a RELEASE COMPLETE message containing a return error component. Error values are specified in 3GPP TS 24.080 [5].



Figure 5.2.1.1.2.1: Location Notification

5.2.1.2 Positioning Information Transport

The AMF sends an LPP message and an associated Correlation Identifier in the DL NAS Transport message (refer to 3GPP TS 24.501 [3] and 3GPP TS 23.273 [2] clause 6.11.1) to a UE, or a UE operating as PRU, or both. Figure 5.2.1.2.1 illustrates an example of the NAS signalling transport for downlink LPP messages.

get full document from standards.iteh.ai

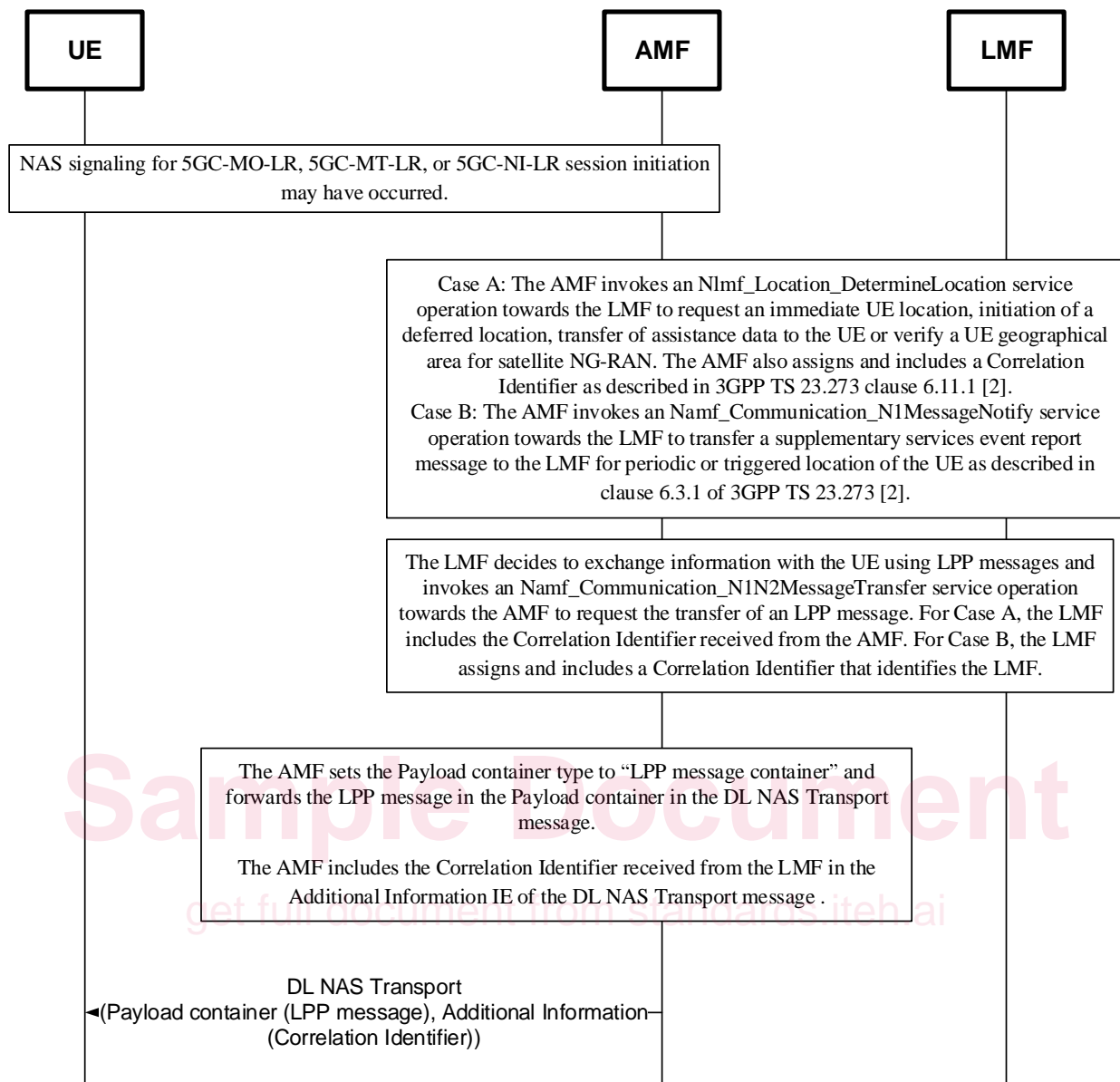


Figure 5.2.1.2.1: NAS signalling transport for downlink LPP messages

NOTE 1: If a scheduled location time is received in the LPP message, the UE in 5GMM-IDLE mode can initiate a service request procedure shortly before the scheduled location time.

NOTE 2: If the LMF determines that simultaneous measurements for UE and PRU(s) are needed, the LMF may send the time window(s) rather than the scheduled location time in the LPP messages to the UE, PRU(s) and NG-RAN. Definition of the time window and the associated configuration parameters are specified in TS 37.355 [4] and TS 38.455 [11].

5.2.1.3 Supplementary Services Periodic or Triggered Location

5.2.1.3.1 General

The supplementary services LCS PeriodicTriggered Invoke operation enables the LMF to initiate periodic or triggered location event reporting by a target UE as described in clause 6.3.1 of 3GPP TS 23.273 [2]. The supplementary services LCS PeriodicTriggered Invoke message is transferred to the target UE via the serving AMF in a DL NAS Transport message. A response from the target UE is similarly returned to the LMF via the serving AMF and is transferred to the AMF in an UL NAS Transport message. If the LCS PeriodicTriggered Invoke message in the Payload container IE of a DL NAS TRANSPORT message includes the deferred routing identifier, the UE shall include the deferred routing

identifier in the Additional information IE of a UL NAS TRANSPORT message during the subsequent procedures as specified in clause 5.2.2.

Figure 5.2.1.3.1.1 illustrates an example of the NAS signalling transport for initiation of periodic or triggered location.

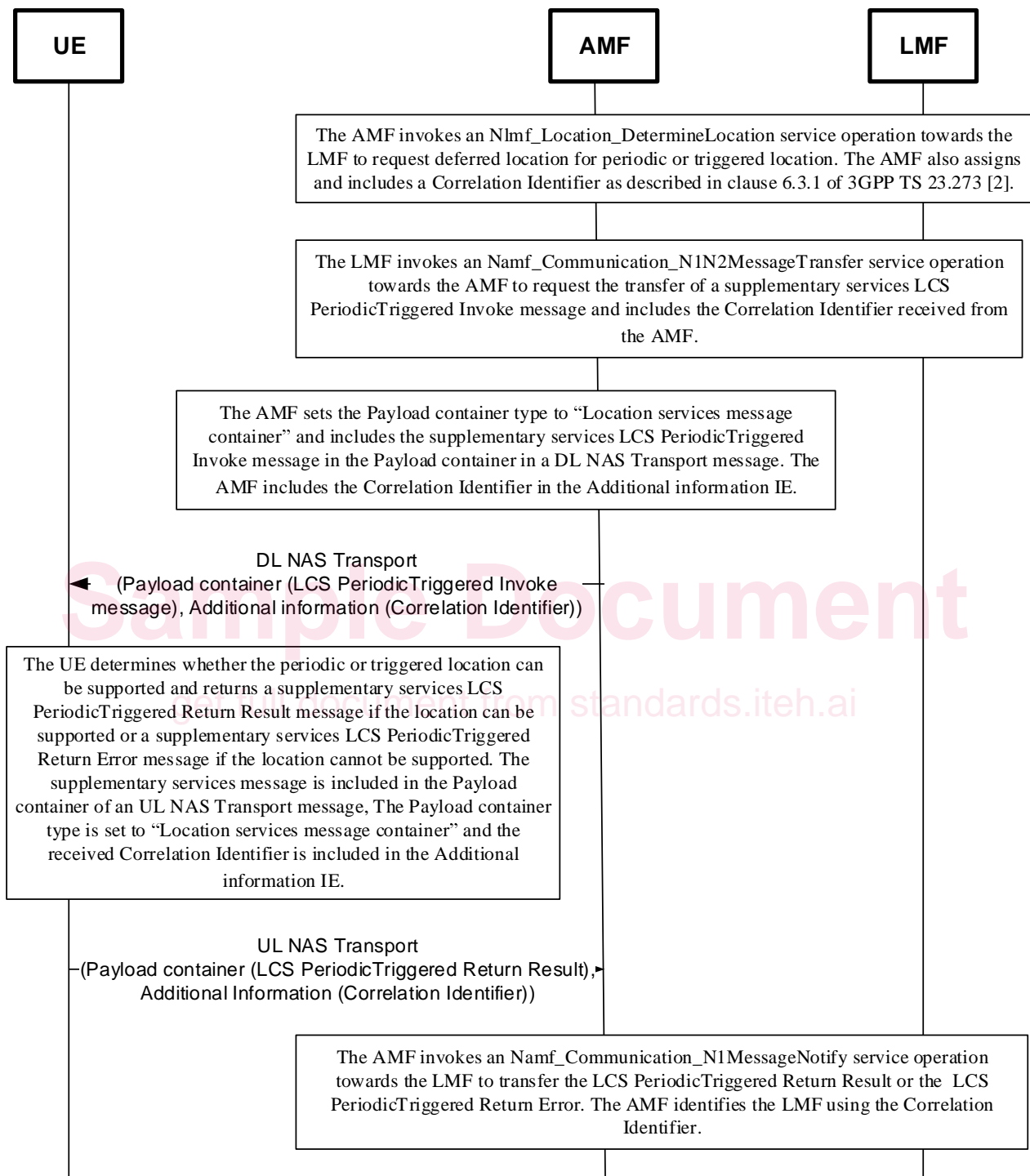


Figure 5.2.1.3.1.1: NAS signalling transport for LCS PeriodicTriggered messages

NOTE: If a scheduled location time is received in the LCS PeriodicTriggered Invoke message, the UE in 5GMM-IDLE mode can initiate a service request procedure shortly before the scheduled location time.