

ETSI TS 138 355 V19.1.0 (2026-04)



TECHNICAL SPECIFICATION

**5G;
NR;
Sidelink Positioning Protocol (SLPP);
Protocol Specification
(3GPP TS 38.355 version 19.1.0 Release 19)**



Reference

RTS/TSGR-0238355vj10

Keywords

5G

ETSI

650 Route des Lucioles
F-06921 Sophia Antipolis Cedex - FRANCE

Tel.: +33 4 92 94 42 00 Fax: +33 4 93 65 47 16

Siret N° 348 623 562 00017 - APE 7112B
Association à but non lucratif enregistrée à la
Sous-Préfecture de Grasse (06) N° w061004871

Important notice

The present document can be downloaded from the
[ETSI Search & Browse Standards](#) application.

The present document may be made available in electronic versions and/or in print. The content of any electronic and/or print versions of the present document shall not be modified without the prior written authorization of ETSI. In case of any existing or perceived difference in contents between such versions and/or in print, the prevailing version of an ETSI deliverable is the one made publicly available in PDF format on [ETSI deliver](#) repository.

Users should be aware that the present document may be revised or have its status changed, this information is available in the [Milestones listing](#).

If you find errors in the present document, please send your comments to the relevant service listed under [Committee Support Staff](#).

If you find a security vulnerability in the present document, please report it through our [Coordinated Vulnerability Disclosure \(CVD\)](#) program.

Notice of disclaimer & limitation of liability

The information provided in the present deliverable is directed solely to professionals who have the appropriate degree of experience to understand and interpret its content in accordance with generally accepted engineering or other professional standard and applicable regulations.

No recommendation as to products and services or vendors is made or should be implied.

No representation or warranty is made that this deliverable is technically accurate or sufficient or conforms to any law and/or governmental rule and/or regulation and further, no representation or warranty is made of merchantability or fitness for any particular purpose or against infringement of intellectual property rights.

In no event shall ETSI be held liable for loss of profits or any other incidental or consequential damages.

Any software contained in this deliverable is provided "AS IS" with no warranties, express or implied, including but not limited to, the warranties of merchantability, fitness for a particular purpose and non-infringement of intellectual property rights and ETSI shall not be held liable in any event for any damages whatsoever (including, without limitation, damages for loss of profits, business interruption, loss of information, or any other pecuniary loss) arising out of or related to the use of or inability to use the software.

Copyright Notification

No part may be reproduced or utilized in any form or by any means, electronic or mechanical, including photocopying and microfilm except as authorized by written permission of ETSI.

The content of the PDF version shall not be modified without the written authorization of ETSI.

The copyright and the foregoing restriction extend to reproduction in all media.

© ETSI 2026.
All rights reserved.

Intellectual Property Rights

Essential patents

IPRs essential or potentially essential to normative deliverables may have been declared to ETSI. The declarations pertaining to these essential IPRs, if any, are publicly available for **ETSI members and non-members**, and can be found in ETSI SR 000 314: "*Intellectual Property Rights (IPRs); Essential, or potentially Essential, IPRs notified to ETSI in respect of ETSI standards*", which is available from the ETSI Secretariat. Latest updates are available on the [ETSI IPR online database](#).

Pursuant to the ETSI Directives including the ETSI IPR Policy, no investigation regarding the essentiality of IPRs, including IPR searches, has been carried out by ETSI. No guarantee can be given as to the existence of other IPRs not referenced in ETSI SR 000 314 (or the updates on the ETSI Web server) which are, or may be, or may become, essential to the present document.

Trademarks

The present document may include trademarks and/or tradenames which are asserted and/or registered by their owners. ETSI claims no ownership of these except for any which are indicated as being the property of ETSI, and conveys no right to use or reproduce any trademark and/or tradename. Mention of those trademarks in the present document does not constitute an endorsement by ETSI of products, services or organizations associated with those trademarks.

DECT™, **PLUGTESTS™**, **UMTS™** and the ETSI logo are trademarks of ETSI registered for the benefit of its Members. **3GPP™**, **LTE™** and **5G™** logo are trademarks of ETSI registered for the benefit of its Members and of the 3GPP Organizational Partners. **oneM2M™** logo is a trademark of ETSI registered for the benefit of its Members and of the oneM2M Partners. **GSM®** and the GSM logo are trademarks registered and owned by the GSM Association.

Legal Notice

This Technical Specification (TS) has been produced by ETSI 3rd Generation Partnership Project (3GPP).

The present document may refer to technical specifications or reports using their 3GPP identities. These shall be interpreted as being references to the corresponding ETSI deliverables.

The cross reference between 3GPP and ETSI identities can be found at [3GPP to ETSI numbering cross-referencing](#).

Modal verbs terminology

In the present document "**shall**", "**shall not**", "**should**", "**should not**", "**may**", "**need not**", "**will**", "**will not**", "**can**" and "**cannot**" are to be interpreted as described in clause 3.2 of the [ETSI Drafting Rules](#) (Verbal forms for the expression of provisions).

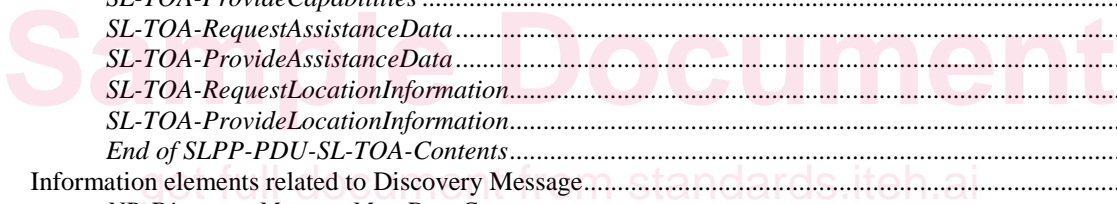
"**must**" and "**must not**" are **NOT** allowed in ETSI deliverables except when used in direct citation.

Contents

Intellectual Property Rights	2
Legal Notice	2
Modal verbs terminology.....	2
Foreword.....	6
1 Scope	7
2 References	7
3 Definitions of terms, symbols and abbreviations	8
3.1 Terms.....	8
3.2 Abbreviations	8
4 Functionality of Protocol.....	9
4.1 General	9
4.1.1 SLPP Configuration.....	9
4.1.2 SLPP Sessions and Transactions	9
4.1.3 SLPP Positioning Methods	9
4.1.4 SLPP Messages.....	9
4.2 Common SLPP Session Procedure.....	10
4.3 SLPP Transport	11
4.3.1 Transport Layer Requirements	11
4.3.2 SLPP Duplicate Detection	11
4.3.3 SLPP Acknowledgement	11
4.3.3.1 General	11
4.3.3.2 Procedure related to Acknowledgement.....	11
4.3.4 SLPP Retransmission.....	12
4.3.4.1 General	12
4.3.4.2 Procedure related to Retransmission.....	12
5 SLPP Procedures	13
5.1 Procedures related to capability transfer	13
5.1.1 General.....	13
5.1.2 Capability Transfer procedure	13
5.1.3 Capability Indication procedure.....	14
5.1.4 Transmission of SLPP Request Capabilities.....	14
5.1.5 Reception of SLPP Request Capabilities	14
5.1.6 Transmission of SLPP Provide Capabilities	15
5.2 Procedures related to Assistance Data Transfer	15
5.2.1 General.....	15
5.2.2 Assistance Data Transfer procedure	15
5.2.3 Assistance Data Delivery procedure	16
5.2.4 Transmission of SLPP Request Assistance Data	16
5.2.5 Reception of SLPP Request Assistance Data.....	16
5.2.6 Reception of SLPP Provide Assistance Data.....	16
5.3 Procedures related to Location Information Transfer.....	17
5.3.1 General.....	17
5.3.2 Location Information Transfer procedure.....	17
5.3.3 Location Information Delivery procedure	17
5.3.4 Transmission of Request Location Information.....	18
5.3.5 Reception of Request Location Information	18
5.3.6 Transmission of Provide Location Information	18
5.4 Error Handling Procedures	19
5.4.1 General.....	19
5.4.2 Procedures related to Error Indication	19
5.4.3 SLPP Error Detection	19
5.4.4 Reception of an SLPP Error Message.....	20
5.5 Abort Procedure	20

5.5.1	General.....	20
5.5.2	Procedures related to Abort	20
5.5.3	Reception of an SLPP Abort Message.....	20
6	Protocol data units, formats and parameters (ASN.1).....	21
6.1	General	21
6.2	SLPP messages.....	21
6.2.1	General message structure	21
–	<i>SLPP-PDU-Definitions</i>	21
–	<i>SLPP-Message</i>	23
–	<i>SLPP-MessageBody</i>	24
6.2.2	Message body information elements definitions.....	25
–	<i>RequestCapabilities</i>	25
–	<i>ProvideCapabilities</i>	25
–	<i>RequestAssistanceData</i>	26
–	<i>ProvideAssistanceData</i>	26
–	<i>RequestLocationInformation</i>	27
–	<i>ProvideLocationInformation</i>	28
–	<i>Abort</i>	28
–	<i>Error</i>	29
6.3	SLPP information elements.....	29
6.3.1	Common information elements.....	29
–	<i>ARFCN-ValueNR</i>	29
–	<i>CommonIEsAbort</i>	30
–	<i>CommonIEsError</i>	30
–	<i>GNSS-ID-Bitmap</i>	30
–	<i>LCS-GCS-Translation</i>	31
–	<i>LOS-NLOS-Indicator</i>	31
–	<i>NCGI</i>	32
–	<i>NR-PhysCellID</i>	32
–	<i>PositioningModes</i>	32
–	<i>SL-RTD-Info</i>	33
–	<i>SL-TimeStamp</i>	34
–	<i>SL-TimingQuality</i>	35
6.3.2	UE capability information elements	35
–	<i>ScheduledLocationTimeSupportPerMode</i>	35
6.3.3	Void	36
6.4	Multiplicity and type constraint values	36
–	<i>Multiplicity and type constraint definitions</i>	36
–	<i>End of SLPP-PDU-Definitions</i>	36
6.5	SLPP PDU Common Contents.....	36
–	<i>SLPP-PDU-CommonContents</i>	36
–	<i>CommonIEsRequestCapabilities</i>	37
–	<i>CommonIEsProvideCapabilities</i>	37
–	<i>CommonIEsRequestAssistanceData</i>	37
–	<i>CommonIEsProvideAssistanceData</i>	38
–	<i>CommonIEsRequestLocationInformation</i>	38
–	<i>CommonIEsProvideLocationInformation</i>	43
–	<i>End of SLPP-PDU-CommonContents</i>	50
6.6	SLPP PDU Common SL-PRS Methods Contents.....	50
–	<i>SLPP-PDU-CommonSL-PRS-MethodsContents</i>	50
–	<i>CommonSL-PRS-MethodsIEsRequestCapabilities</i>	51
–	<i>CommonSL-PRS-MethodsIEsProvideCapabilities</i>	51
–	<i>CommonSL-PRS-MethodsIEsRequestAssistanceData</i>	56
–	<i>CommonSL-PRS-MethodsIEsProvideAssistanceData</i>	56
–	<i>CommonSL-PRS-MethodsIEsRequestLocationInformation</i>	59
–	<i>CommonSL-PRS-MethodsIEsProvideLocationInformation</i>	60
–	<i>End of SLPP-PDU-CommonSL-PRS-MethodsContents</i>	60
6.7	SLPP PDU SL-AoA Contents	60
–	<i>SLPP-PDU-SL-AoA-Contents</i>	60
–	<i>SL-AoA-RequestCapabilities</i>	61
–	<i>SL-AoA-ProvideCapabilities</i>	61

- *SL-AoA-RequestAssistanceData*63
- *SL-AoA-ProvideAssistanceData*64
- *SL-AoA-RequestLocationInformation*65
- *SL-AoA-ProvideLocationInformation*66
- *End of SLPP-PDU-SL-AoA-Contents*68
- 6.8 SLPP PDU SL-RTT Contents68
 - *SLPP-PDU-SL-RTT-Contents*68
 - *SL-RTT-RequestCapabilities*69
 - *SL-RTT-ProvideCapabilities*69
 - *SL-RTT-RequestAssistanceData*72
 - *SL-RTT-ProvideAssistanceData*72
 - *SL-RTT-RequestLocationInformation*72
 - *SL-RTT-ProvideLocationInformation*73
 - *End of SLPP-PDU-SL-RTT-Contents*75
- 6.9 SLPP PDU SL-TDOA Contents76
 - *SLPP-PDU-SL-TDOA-Contents*76
 - *SL-TDOA-RequestCapabilities*76
 - *SL-TDOA-ProvideCapabilities*77
 - *SL-TDOA-RequestAssistanceData*78
 - *SL-TDOA-ProvideAssistanceData*79
 - *SL-TDOA-RequestLocationInformation*79
 - *SL-TDOA-ProvideLocationInformation*80
 - *End of SLPP-PDU-SL-TDOA-Contents*82
- 6.10 SLPP PDU SL-TOA Contents83
 - *SLPP-PDU-SL-TOA-Contents*83
 - *SL-TOA-RequestCapabilities*83
 - *SL-TOA-ProvideCapabilities*84
 - *SL-TOA-RequestAssistanceData*85
 - *SL-TOA-ProvideAssistanceData*86
 - *SL-TOA-RequestLocationInformation*86
 - *SL-TOA-ProvideLocationInformation*87
 - *End of SLPP-PDU-SL-TOA-Contents*89
- 6.11 Information elements related to Discovery Message89
 - *NR-DiscoveryMessageMetaDataContents*89
 - *RSPP-Metadata*90
 - *End of NR-DiscoveryMessageMetaDataContents*90
- Annex A (informative): Change history91**
- History92



Foreword

This Technical Specification has been produced by the 3rd Generation Partnership Project (3GPP).

The contents of the present document are subject to continuing work within the TSG and may change following formal TSG approval. Should the TSG modify the contents of the present document, it will be re-released by the TSG with an identifying change of release date and an increase in version number as follows:

Version x.y.z

where:

- x the first digit:
 - 1 presented to TSG for information;
 - 2 presented to TSG for approval;
 - 3 or greater indicates TSG approved document under change control.
- y the second digit is incremented for all changes of substance, i.e. technical enhancements, corrections, updates, etc.
- z the third digit is incremented when editorial only changes have been incorporated in the document.

Sample Document

get full document from standards.iteh.ai

1 Scope

The present document specifies the Sidelink Positioning Protocol (SLPP) for the interface between UEs and between UE and LMF.

2 References

The following documents contain provisions which, through reference in this text, constitute provisions of the present document.

- References are either specific (identified by date of publication, edition number, version number, etc.) or non-specific.
- For a specific reference, subsequent revisions do not apply.
- For a non-specific reference, the latest version applies. In the case of a reference to a 3GPP document (including a GSM document), a non-specific reference implicitly refers to the latest version of that document *in the same Release as the present document*.

- [1] 3GPP TR 21.905: "Vocabulary for 3GPP Specifications".
- [2] 3GPP TS 38.331: "NR; Radio Resource Control (RRC); Protocol specification".
- [3] 3GPP TS 38.305: "NG Radio Access Network (NG-RAN); Stage 2 functional specification of User Equipment (UE) positioning in NG-RAN".
- [4] ITU-T Recommendation X.691 (07/2002) "Information technology - ASN.1 encoding rules: Specification of Packed Encoding Rules (PER)" (Same as the ISO/IEC International Standard 8825-2).
- [5] 3GPP TS 23.273: "5G System (5GS) Location Services (LCS); Stage 2".
- [6] 3GPP TS 38.211: "3rd Generation Partnership Project; Technical Specification Group Radio Access Network; NR; Physical channels and modulation".
- [7] 3GPP TS 23.032: "Universal Geographical Area Description (GAD)".
- [8] 3GPP TR 38.901: "Technical Specification Group Radio Access Network; Study on channel model for frequencies from 0.5 to 100 GHz".
- [9] 3GPP TS 23.287: "Architecture enhancements for 5G System (5GS) to support Vehicle-to-Everything (V2X) services".
- [10] 3GPP TS 38.101-2: "NR; User Equipment (UE) radio transmission and reception; Part 2: Range 2 Standalone".
- [11] 3GPP TS 38.101-1: "NR; User Equipment (UE) radio transmission and reception; Part 1: Range 1 Standalone".
- [12] 3GPP TS 23.586: "Technical Specification Group Services and System Aspects; Architectural Enhancements to support Ranging based services and Sidelink Positioning".
- [13] 3GPP TS 38.133: "NR; Requirements for support of radio resource management".
- [14] 3GPP TS 23.304: "Technical Specification Group Services and System Aspects; Proximity based Services (ProSe) in the 5G System (5GS)".
- [15] 3GPP TS 38.321: "NR; Medium Access Control (MAC); Protocol specification".
- [16] 3GPP TS 38.215: "NR; Physical layer measurements".

3 Definitions of terms, symbols and abbreviations

3.1 Terms

For the purposes of the present document, the terms given in TR 21.905 [1] and the following apply. A term defined in the present document takes precedence over the definition of the same term, if any, in TR 21.905 [1].

Field: The individual contents of an information element are referred to as fields.

Ranging: Refers to the determination of the distance between two UEs or more UEs and/or the direction of one UE (i.e. Target UE) from another UE via PC5 interface.

Ranging/Sidelink Positioning: AS functionality enabling ranging-based services and sidelink positioning as specified in TS 23.586 [12].

SL Anchor UE: A UE, supporting positioning of target UE, e.g. by transmitting and/or receiving reference signals for positioning, providing positioning-related information, etc. over the Sidelink interface.

SL Server UE: A UE offering position method determination, assistance data distribution and/or location calculation functionalities for sidelink positioning and ranging based services. It interacts with other UEs over PC5 as necessary in order to determine a ranging/SL position method, distribute assistance data and calculate the location of the target UE. A Target UE or SL Anchor UE can act as SL Server UE if any of the functionalities is supported.

SL Target UE: A UE whose distance, direction and/or position is measured with the support from one or multiple SL Anchor UEs using Sidelink in the Ranging based service and Sidelink positioning.

UE-only Operation: Operation of Ranging/Sidelink Positioning in which the service request handling and result calculation are performed by UE.

3.2 Abbreviations

For the purposes of the present document, the abbreviations given in TR 21.905 [1] and the following apply. An abbreviation defined in the present document takes precedence over the definition of the same abbreviation, if any, in TR 21.905 [1].

DFN	Direct Frame Number
GCS	Global Coordinate System (as defined in TR 38.901 [8])
LCS	LoCation Services
	Local Coordinate System (as defined in TR 38.901 [8])
LMF	Location Management Function
LOS	Line-of-Sight
NLOS	Non-Line-of-Sight
RTD	Relative Time Difference
SL	Sidelink
SL-AoA	Sidelink Angle-of-Arrival
SL-MO-LR	Sidelink Mobile Originating Location Request
SL-MT-LR	Sidelink Mobile Terminating Location Request
SLPP	Sidelink Positioning Protocol
SL-PRS	Sidelink Positioning Reference Signals
SL-PRS-RSRP	Sidelink Positioning Reference Signals based Reference Signal Received Power
SL-PRS-RSRPP	Sidelink Positioning Reference Signals based Reference Signal Received Path Power
SL-PRS-RSTD	Sidelink Positioning Reference Signals based Reference Signal Time Difference
SL-PRS-RTOA	Sidelink Positioning Reference Signals based Relative Time of Arrival
SL-RTT	Sidelink Round Trip Time
SL-TDOA	Sidelink Time Difference Of Arrival
SL-TOA	Sidelink Time Of Arrival
UE	User Equipment

4 Functionality of Protocol

4.1 General

4.1.1 SLPP Configuration

SLPP is used point-to-point between Endpoints, e.g. Location Server (SL Server UE or LMF) and target in order to obtain absolute position, relative position, or ranging information of target UE using sidelink measurements obtained by one or more reference sources.

Figure 4.1.1-1: Void

4.1.2 SLPP Sessions and Transactions

An SLPP session is used between UEs or a Location Server and a UE in order to obtain location related measurements based on NR PC5 radio signals, a location estimate or to transfer assistance data. A single SLPP session is used to support a single location request (e.g., for a single SL-MT-LR, or SL-MO-LR). Multiple SLPP sessions can be used between the same endpoints to support multiple location requests (as required by TS 23.273 [5]). For UE-only Operation, the instigator of an SLPP session which is the Endpoint who receives the LCS request, initiates an SLPP session by sending an SLPP message containing an assigned session ID (session identifier) to the other endpoint(s). All constituent messages within a session shall contain the same session ID. For LMF involved Operation, the session ID is assigned by target UE and contained in the SLPP messages used for communication between UEs. The session ID may be included in the SLPP message for the communication between a UE and the LMF.

Each SLPP session comprises one or more SLPP transactions, with each SLPP transaction performing a single operation (capability exchange, assistance data transfer, or location information transfer). The SLPP transactions are realized as SLPP procedures. The instigator of an SLPP session will always instigate the first SLPP transaction, but subsequent transactions may be instigated by either end. SLPP transactions within a session may occur serially or in parallel. SLPP transactions are indicated at the SLPP protocol level with a transaction ID in order to associate messages with one another (e.g., request and response).

Messages within a transaction are linked by a common transaction identifier.

4.1.3 SLPP Positioning Methods

This version of the specification defines SL-TDOA, SL-TOA, SL-AoA and SL-RTT positioning methods based on NR PC5 radio signals.

4.1.4 SLPP Messages

Each SLPP transaction involves the exchange of one or more SLPP messages between Endpoint A and Endpoint B. The general format of an SLPP message consists of a set of common fields followed by a body. The body (which may be empty) contains information specific to a particular message type. Each message type contains information specific to one or more positioning methods and/or information common to all positioning methods.

The common fields are as follows:

Field	Role
<i>sessionID</i>	Identify messages belonging to the same session
<i>transactionID</i>	Identify messages belonging to the same transaction
<i>endTransaction</i>	Indicate when a transaction (e.g. one with periodic responses) has ended
<i>sequenceNumber</i>	Enable detection of a duplicate SLPP message at a receiver
<i>acknowledgement</i>	Enable an acknowledgement to be requested and/or returned for any SLPP message

The following message types are defined:

- Request Capabilities;
- Provide Capabilities;
- Request Assistance Data;
- Provide Assistance Data;
- Request Location Information;
- Provide Location Information;
- Abort;
- Error.

4.2 Common SLPP Session Procedure

The purpose of this procedure is to support an SLPP session comprising a sequence of SLPP transactions. The procedure is described in Figure 4.2-1.

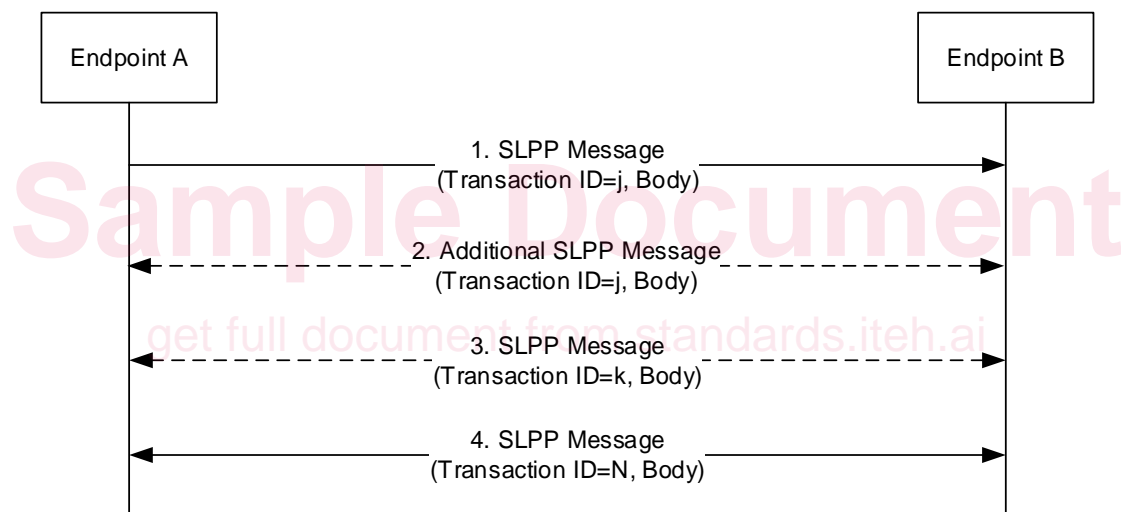


Figure 4.2-1 SLPP Session Procedure

1. Endpoint A, which is the Endpoint who receives the LCS request, initiates an SLPP session by sending an SLPP message containing an assigned session ID for an initial SLPP transaction j to the other endpoint B.
2. Endpoints A and B may exchange further messages to continue the transaction started in step 1.
3. Either endpoint may instigate further transactions by sending additional SLPP messages.
4. A session is terminated by a final transaction N in which SLPP messages will be exchanged between the two endpoints.

Within the same session, all constituent messages shall contain the same session ID and within each transaction, all constituent messages shall contain the same transaction ID. The last message sent in each transaction shall have the field *endTransaction* set to TRUE. Transactions that occur in parallel shall use different transaction IDs; transaction IDs for completed transactions may be reused at any time after the final message of the previous transaction with the same ID is known to have been received.

4.3 SLPP Transport

4.3.1 Transport Layer Requirements

SLPP requires reliable, in-sequence delivery of SLPP messages from the underlying transport layers. This clause describes the transport capabilities that are available within SLPP. A UE implementing SLPP shall support SLPP reliable transport (including all three of duplicate detection, acknowledgement, and retransmission).

4.3.2 SLPP Duplicate Detection

A sender shall include a sequence number in all SLPP messages sent for a particular location session. The sequence number shall be distinct for different SLPP messages sent by the same endpoint for the same endpoint in the same location session (e.g., may start at zero in the first SLPP message and increase monotonically in each succeeding SLPP message). Sequence numbers used in the messages transmitted from different endpoints or for different endpoints are independent (e.g., can be the same).

A receiver shall record the most recent received sequence number for each pair of endpoints of each location session. If a message is received carrying the same sequence number as that last received for the same pair of endpoints and the associated location session, it shall be discarded. Otherwise (i.e., if the sequence number is different or the sequence number is same but for different pair of endpoints), the message shall be processed.

Sending and receiving sequence numbers shall be deleted in a server when the associated location session is terminated and shall be deleted in the UE(s) when there has been no activity for a particular location session for 10 minutes.

4.3.3 SLPP Acknowledgement

4.3.3.1 General

Each SLPP message may carry an acknowledgement request and/or an acknowledgement indicator. An SLPP message including an acknowledgement request (i.e., that include the field *ackRequested* set to TRUE) shall also include a sequence number. Upon reception of an SLPP message which includes the field *ackRequested* set to TRUE, a receiver returns an SLPP message with an acknowledgement response (i.e., that includes the field *ackIndicator* set to the same sequence number of the message being acknowledged). An acknowledgement response may contain no SLPP message body (in which case only the sequence number being acknowledged is significant); alternatively, the acknowledgement may be sent in an SLPP message along with an SLPP message body. An acknowledgement is returned for each received SLPP message that requested an acknowledgement including any duplicate(s). Once a sender receives an acknowledgement for an SLPP message, and provided any included sequence number is matching, it is permitted to send the next SLPP message. No message reordering is needed at the receiver since this stop-and-wait method of sending ensures that messages normally arrive in the correct order.

When an SLPP message is transported via a NAS SL-MO-LR request, the message does not request an acknowledgement.

4.3.3.2 Procedure related to Acknowledgement

Figure 4.3.3.2-1 shows the procedure related to acknowledgement.

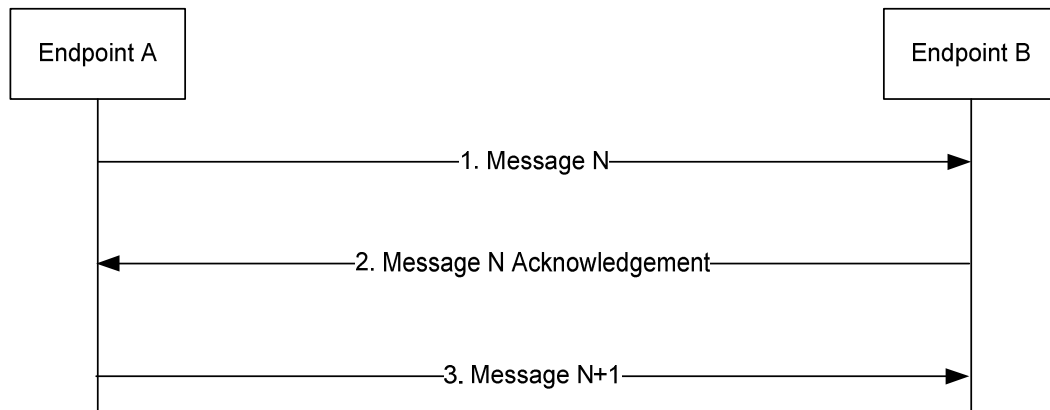


Figure 4.3.3.2-1: SLPP Acknowledgement procedure

1. Endpoint A sends an SLPP message N to Endpoint B which includes the field *ackRequested* set to TRUE and a sequence number.
2. If SLPP message N is received and Endpoint B is able to decode the *ackRequested* value and sequence number, Endpoint B shall return an acknowledgement for message N . The acknowledgement shall contain the field *ackIndicator* set to the same sequence number as that in message N .
3. When the acknowledgement for SLPP message N is received and provided the included field *ackIndicator* matches the sequence number sent in message N , Endpoint A sends the next SLPP message $N+1$ to Endpoint B when this message is available.

4.3.4 SLPP Retransmission

4.3.4.1 General

This capability builds on the acknowledgement and duplicate detection capabilities. When an SLPP message which requires acknowledgement is sent and not acknowledged, it is resent by the sender following a timeout period up to three times. If still unacknowledged after that, the sender aborts all SLPP activity for this Endpoint. The timeout period is determined by the sender implementation but shall not be less than a minimum value of 250 ms.

4.3.4.2 Procedure related to Retransmission

Figure 4.3.4.2-1 shows the procedure related to retransmission when combined with acknowledgement and duplicate detection.

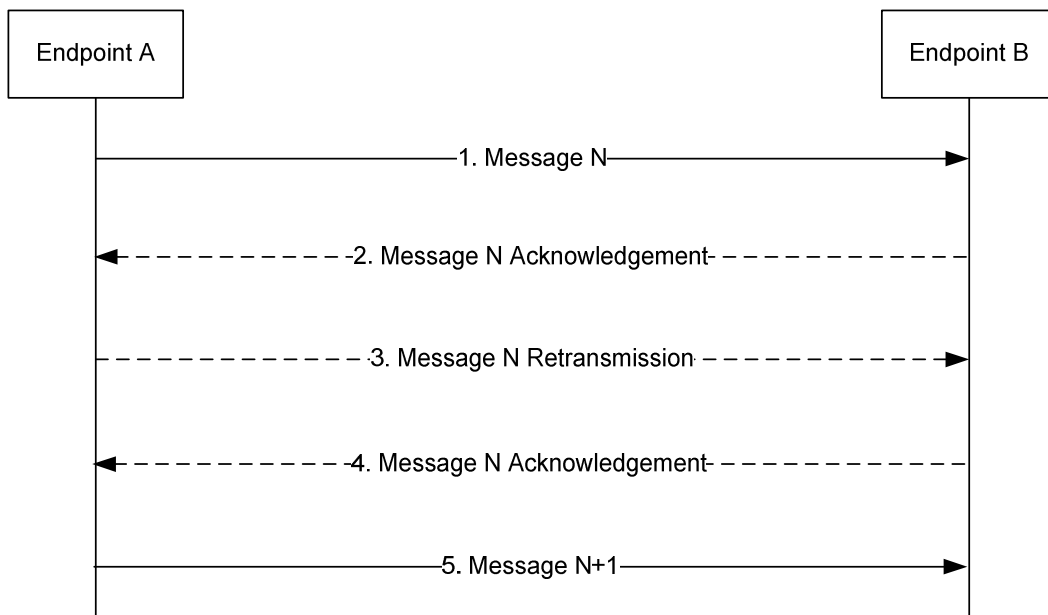


Figure 4.3.4.2-1: SLPP Retransmission procedure

1. Endpoint A sends an SLPP message N to Endpoint B for a particular location session and includes a request for acknowledgement along with a sequence number.
2. If SLPP message N is received and Endpoint B is able to decode the *ackRequested* value and sequence number (regardless of whether the message body can be correctly decoded), Endpoint B shall return an acknowledgement for message N . If the acknowledgement is received by Endpoint A (such that the acknowledged message can be identified and sequence numbers are matching), Endpoint A skips steps 3 and 4.
3. If the acknowledgement in step 2 is not received after a timeout period, Endpoint A shall retransmit SLPP message N and shall include the same sequence number as in step 1.
4. If SLPP message N in step 3 is received and Endpoint B is able to decode the *ackRequested* value and sequence number (regardless of whether the message body can be correctly decoded and whether or not the message is considered a duplicate), Endpoint B shall return an acknowledgement. Steps 3 may be repeated one or more times if the acknowledgement in step 4 is not received after a timeout period by Endpoint A. If the acknowledgement in step 4 is still not received after sending three retransmissions, Endpoint A shall abort all procedures and activity associated with SLPP support for this Endpoint B.
5. Once an acknowledgement in step 2 or step 4 is received, Endpoint A sends the next SLPP message $N+1$ for the location session to Endpoint B when this message is available.

5 SLPP Procedures

5.1 Procedures related to capability transfer

5.1.1 General

The purpose of the procedures that are grouped together in this clause is to enable the transfer of capabilities from Endpoint A to Endpoint B. Capabilities in this context refer to positioning and protocol capabilities related to SLPP and the positioning methods supported by SLPP. These procedures instantiate the Capability Transfer procedure from TS 38.305 [3].

5.1.2 Capability Transfer procedure

The Capability Transfer procedure is shown in Figure 5.1.2-1.

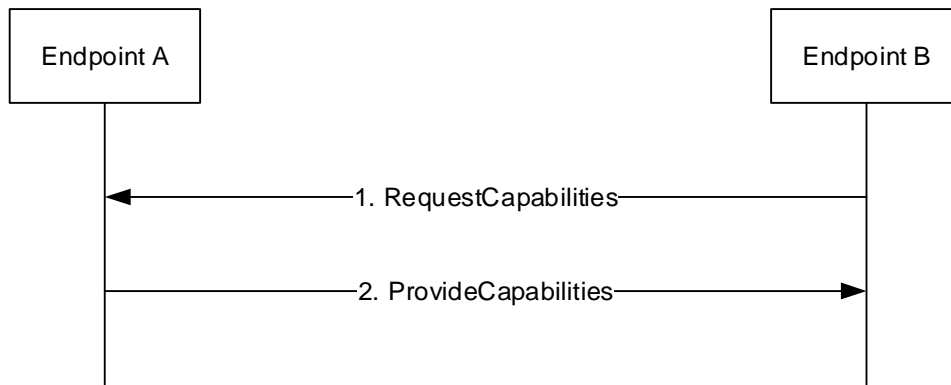


Figure 5.1.2-1: SLPP Capability Transfer procedure

1. Endpoint B sends a *RequestCapabilities* message to Endpoint A. Endpoint B may indicate the types of capability requested.
2. Endpoint A responds with a *ProvideCapabilities* message to Endpoint B. The capabilities shall correspond to the capability types specified in step 1. This message shall include the field *endTransaction* set to TRUE.

5.1.3 Capability Indication procedure

The Capability Indication procedure allows the Endpoint A to provide unsolicited capabilities to the Endpoint B and is shown in Figure 5.1.3-1.

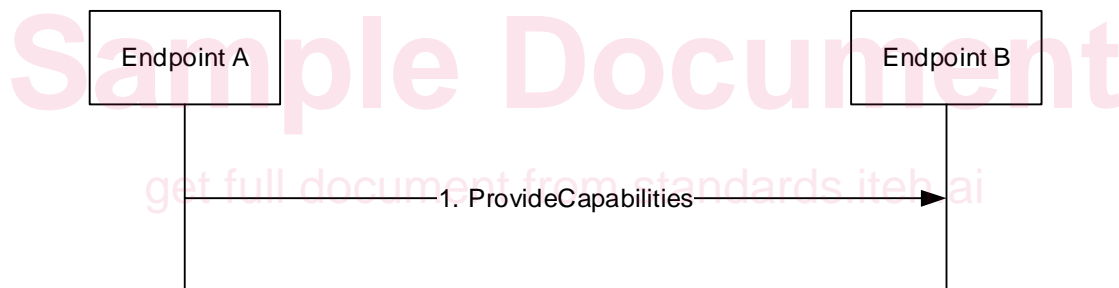


Figure 5.1.3-1: SLPP Capability Indication procedure

1. Endpoint A sends a *ProvideCapabilities* message to Endpoint B. This message shall include the field *endTransaction* set to TRUE.

5.1.4 Transmission of SLPP Request Capabilities

When triggered to transmit a *RequestCapabilities* message, Endpoint B shall:

- 1> set the positioning method specific *RequestCapabilities* PDUs in accordance with the information received from upper layers.
- 1> deliver the message to lower layers for transmission.

5.1.5 Reception of SLPP Request Capabilities

Upon receiving a *RequestCapabilities* message, Endpoint A shall generate a *ProvideCapabilities* message as a response.

Endpoint A shall:

- 1> for each positioning method for which a request for capabilities is included in the message:
 - 2> if Endpoint A supports this positioning method:
 - 3> include the capabilities of Endpoint A for that supported positioning method in the response message;