



International  
Standard

**ISO/IEC 11179-3**

**Information technology — Metadata  
registries (MDR) —**

Part 3:  
**Metamodel for registry common  
facilities**

**AMENDMENT 1: Enhancements to  
Item Mapping**

*Technologies de l'information — Registres de métadonnées  
(RM) —*

*Partie 3: Métamodèle pour installations communes de registre*

*AMENDEMENT 1: Améliorations du mappage d'éléments*

**Fourth edition  
2023-01**

**AMENDMENT 1  
2026-05**

# Sample Document

get full document from [standards.iteh.ai](https://standards.iteh.ai)



## **COPYRIGHT PROTECTED DOCUMENT**

© ISO/IEC 2026

All rights reserved. Unless otherwise specified, or required in the context of its implementation, no part of this publication may be reproduced or utilized otherwise in any form or by any means, electronic or mechanical, including photocopying, or posting on the internet or an intranet, without prior written permission. Permission can be requested from either ISO at the address below or ISO's member body in the country of the requester.

ISO copyright office  
CP 401 • Ch. de Blandonnet 8  
CH-1214 Vernier, Geneva  
Phone: +41 22 749 01 11  
Email: [copyright@iso.org](mailto:copyright@iso.org)  
Website: [www.iso.org](http://www.iso.org)

Published in Switzerland

© ISO/IEC 2026 – All rights reserved

## Foreword

ISO (the International Organization for Standardization) and IEC (the International Electrotechnical Commission) form the specialized system for worldwide standardization. National bodies that are members of ISO or IEC participate in the development of International Standards through technical committees established by the respective organization to deal with particular fields of technical activity. ISO and IEC technical committees collaborate in fields of mutual interest. Other international organizations, governmental and non-governmental, in liaison with ISO and IEC, also take part in the work.

The procedures used to develop this document and those intended for its further maintenance are described in the ISO/IEC Directives, Part 1. In particular, the different approval criteria needed for the different types of document should be noted. This document was drafted in accordance with the editorial rules of the ISO/IEC Directives, Part 2 (see [www.iso.org/directives](http://www.iso.org/directives) or [www.iec.ch/members\\_experts/refdocs](http://www.iec.ch/members_experts/refdocs)).

ISO and IEC draw attention to the possibility that the implementation of this document may involve the use of (a) patent(s). ISO and IEC take no position concerning the evidence, validity or applicability of any claimed patent rights in respect thereof. As of the date of publication of this document, ISO and IEC had not received notice of (a) patent(s) which may be required to implement this document. However, implementers are cautioned that this may not represent the latest information, which may be obtained from the patent database available at [www.iso.org/patents](http://www.iso.org/patents) and <https://patents.iec.ch>. ISO and IEC shall not be held responsible for identifying any or all such patent rights.

Any trade name used in this document is information given for the convenience of users and does not constitute an endorsement.

For an explanation of the voluntary nature of standards, the meaning of ISO specific terms and expressions related to conformity assessment, as well as information about ISO's adherence to the World Trade Organization (WTO) principles in the Technical Barriers to Trade (TBT) see [www.iso.org/iso/foreword.html](http://www.iso.org/iso/foreword.html). In the IEC, see [www.iec.ch/understanding-standards](http://www.iec.ch/understanding-standards).

This document was prepared by Joint Technical Committee ISO/IEC JTC 1, *Information technology*, Subcommittee SC 32, *Data management and interchange*.

This Amendment 1 provides minor enhancements to the registry specification in Clause 9, major enhancements to the Item Mapping facility in Clause 11, and adds a new Rules facility as Clause 12 of ISO/IEC 11179-3:2023.

A list of all parts in the ISO/IEC 11179 series can be found on the ISO and IEC websites.

Any feedback or questions on this document should be directed to the user's national standards body. A complete listing of these bodies can be found at [www.iso.org/members.html](http://www.iso.org/members.html) and [www.iec.ch/national-committees](http://www.iec.ch/national-committees).

# Sample Document

get full document from [standards.iteh.ai](https://standards.iteh.ai)

# Information technology — Metadata registries (MDR) —

## Part 3: Metamodel for registry common facilities

### AMENDMENT 1: Enhancements to Item Mapping

#### 3.2.29

Replace term entry 3.2.29 with the following:

#### 3.2.29

**datum** (singular)

**datums** (countable plural)

**data** (uncountable plural)

*designation* (3.2.11) whose *concept* (3.2.7) is a value

#### 3.2.30

Replace term entry 3.2.30 with the following:

#### 3.2.30

**metadata**

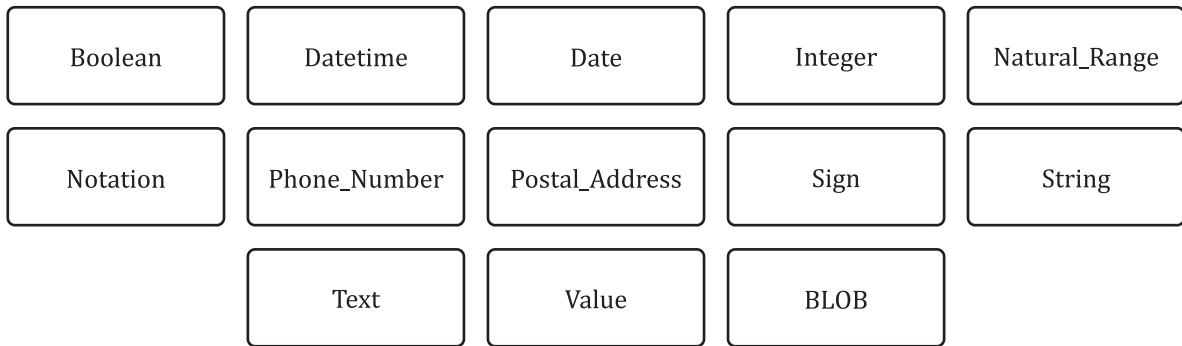
descriptive *data* (3.2.29) about an *object(s)* (3.2.1)

Note 1 to entry In the ISO/IEC 11179 and ISO/IEC 19763 series of standards, the objects being described are instances of the subclasses of **Item** (6.4.2.1), e.g. concepts, data elements, services, etc.

#### 6.2.1, Figure 2

Replace Figure 2 with the following:

## ISO/IEC 11179-3:2023/Amd. 1:2026(en)



**Figure 2 — Predefined types metamodel region**

### 6.2.13

Insert the following subclause after 6.2.13:

#### 6.2.14 BLOB

**BLOB** is a datatype which represents a binary large object string datatype.

EXAMPLE A PDF document to be attached to an instance of the **Reference\_Document** (6.3.8) class.

### 6.3.1, Figure 3

Replace Figure 3 with the following:

Sample Document  
get full document from standards.iteh.ai

ISO/IEC 11179-3:2023/Amd. 1:2026(en)

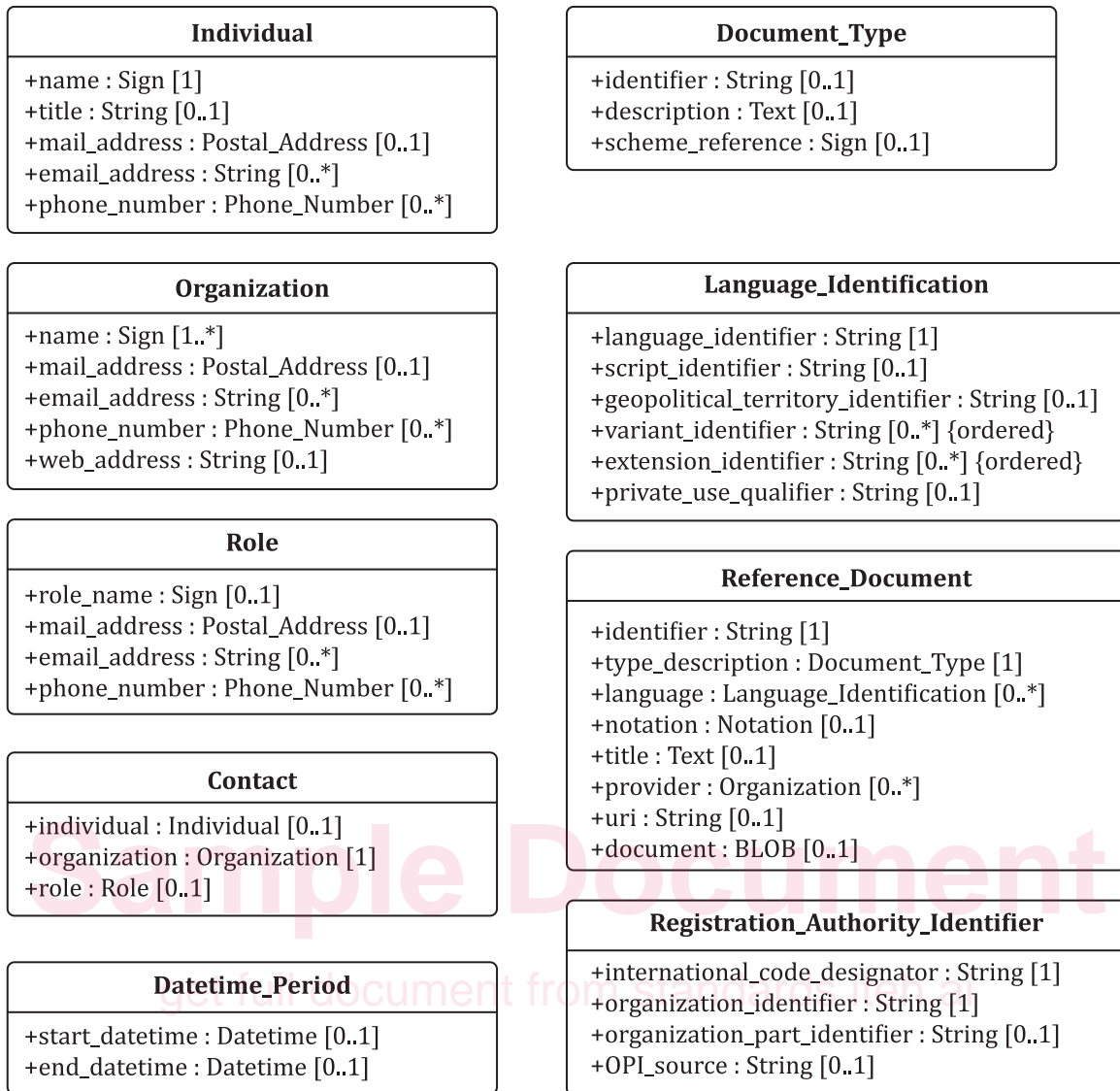


Figure 3 — Basic classes metamodel region

6.3.8.2, Table 7

Append the following row at the end of Table 7:

document	BLOB	0..1	The reference document itself.
----------	------	------	--------------------------------

9.1, Figure 7

Replace Figure 7 with the following:

ISO/IEC 11179-3:2023/Amd. 1:2026(en)

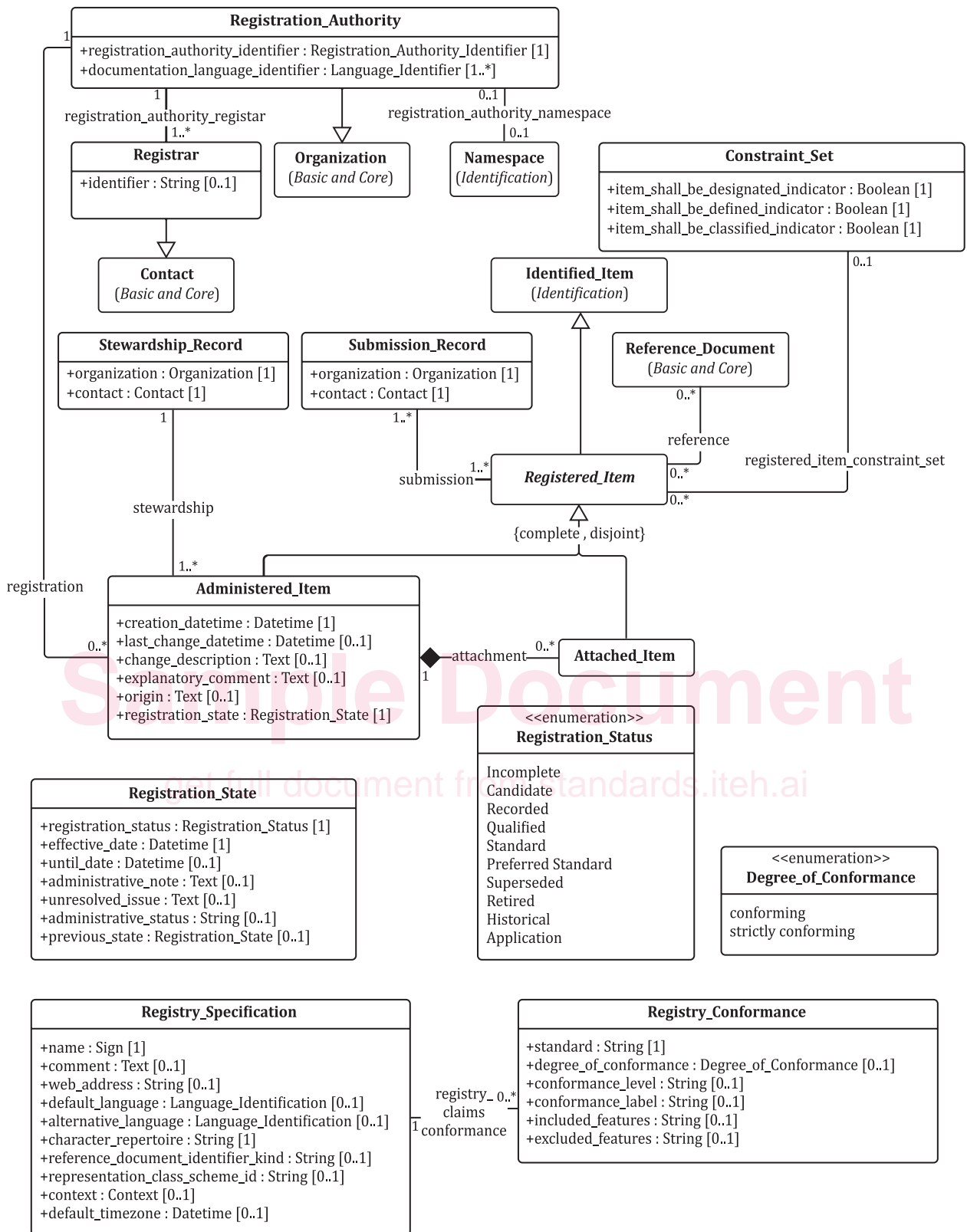


Figure 7 — Registration metamodel region

9.4.10.2

Replace the text in 9.4.10.2 with the following:

See **registry\_claims\_conformance** association (9.5.9).

## 9.4.10.3, Table 28

Replace Table 28 with the following:

**Table 28 — Attributes of Registry\_Specification class**

Attribute name	Multiplicity	Datatype	Description
<b>name</b>	1	<b>Sign</b> (6.2.10)	Definition: name by which the registry is commonly known Example: Australian Institute of Health and Welfare (AIHW) Metadata Online Registry (METeOR) <sup>[39]</sup>
<b>comment</b>	0..1	<b>Text</b> (6.2.12)	Definition: any comment that should be noted about the registry
<b>web_address</b>	0..1	<b>String</b> (6.2.11)	Definition: The World Wide Web uniform resource locator (URL) for the registry Example: <a href="https://meteor.aihw.gov.au/">https://meteor.aihw.gov.au/</a>
<b>default_language</b>	0..1	<b>Language_Identification</b> (6.3.7)	Definition: The language that is used as the default in the registry for designations, definitions and reference documents. Examples: eng-840, en-US
<b>alternative_language</b>	0..*	<b>Language_Identification</b> (6.3.7)	Definition: Any other language that is used in the registry Examples: eng-840, en-US
<b>character_repertoire</b>	1	<b>String</b> (6.2.11)	Definition: The character repertoire that is used by the registry for internal operation Example: ISO/IEC 646 <sup>[3]</sup> or ISO/IEC 10646 <sup>[10]</sup>
<b>reference_document_identifier_kind</b>	0..*	<b>String</b> (6.2.11)	Definition: Specification of the kind of identifier used for identifying reference documents in the registry Examples: Some registries use URIs. Other registries use an external document management system which provides unstructured, opaque identifiers. Yet other registries define a structured identifier form which embeds an identifier type within each identifier in the registry. This attribute specifies the form of identifiers used for reference documents in this particular registry.